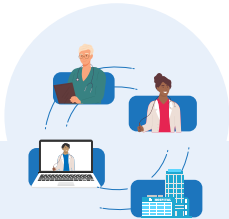




# How the CMS Innovation Center is **SUPPORTING PRIMARY CARE**

Primary care is the foundation of a high-performing health system and essential to improving health outcomes for patients and lowering costs. For that reason, the CMS Innovation Center has invested significant time and resources over the years testing models to strengthen primary care, improve care coordination, and address social determinants of health — like housing and food needs.



## ACO Realizing Equity, Access, and Community Health (ACO REACH)

- ▶ Encourages health care providers — including primary and specialty care doctors, hospitals, and others — to come together to form an Accountable Care Organization, or ACO.
- ▶ Breaks down silos and delivers high-quality, coordinated care to patients that improves health outcomes and manages costs.
- ▶ Addresses health disparities to improve health equity.

2021 - 2026



## Primary Care First (PCF)

- ▶ Supports primary care practices in managing their patients' health — especially patients with complex, chronic health conditions.
- ▶ Enables primary care providers to offer a broader range of health care services that meet the needs of their patients. For example, practices may offer around-the-clock access to a clinician and support for health-related social needs.

2021 - 2026



## Making Care Primary (MCP)

- ▶ Improves care management, community connections, and care integration by providing capacity building resources to those new to value-based care.
- ▶ Increases access to care and creates sustainable change in underserved communities by facilitating partnerships with state Medicaid agencies, social service providers, Federally Qualified Health Centers (FQHCs) and specialty care providers.

2024 - 2034



## States Advancing All-Payer Health Equity Approaches and Development (AHEAD)

- ▶ Creates a new pathway to invest in primary care via statewide primary care investment targets.
- ▶ Provides Enhanced Primary Care Payments to increase investment in primary care.
- ▶ Uses a flexible framework of care transformation activities to align with existing Medicaid value-based-payment arrangements.

2024 - 2034



## ACO Primary Care Flex (ACO PC Flex)

- ▶ Focuses on improving funding and other resources to support primary care delivery in the Medicare Shared Savings Program.
- ▶ Utilizes a flexible payment design to empower participating ACOs and their primary care providers to use more innovative, team-based, person-centered and proactive care approaches.
- ▶ Incentivizes the development of new ACOs, particularly those that will support underserved communities, and addresses health disparities.

2025 - 2030