

CURRENT INDICATIONS FOR MCS: DO THEY FACILITATE UNDERSTANDING OR MUDDY THE WATERS?

MEDCAC MEETING

WEDNESDAY NOVEMBER 14, 2012

Jeffrey Teuteberg, MD

Presenting for

International Society for Heart and Lung Transplantation

Jeffrey Teuteberg
Chair, Mechanical Circulatory Council, ISHLT



MEDCAC

- Outcomes: mortality, AE, patient function, QoL
- Questions
 1. Specific patient criteria can be used to prospectively identify clinically meaningful changes by patients who receive VADs?
 2. One or more facility and/or operator characteristics predict clinically meaningful improvements by patients who receive VADs?
 3. Conclusions are generalizable to Medicare beneficiaries?
 4. Clinically significant knowledge gaps regarding the use of VADs?

Background

□ Evolution in MCS

- ▣ Devices
- ▣ Outcomes
 - Survival
 - Adverse Events
- ▣ Duration of support
- ▣ Patient populations

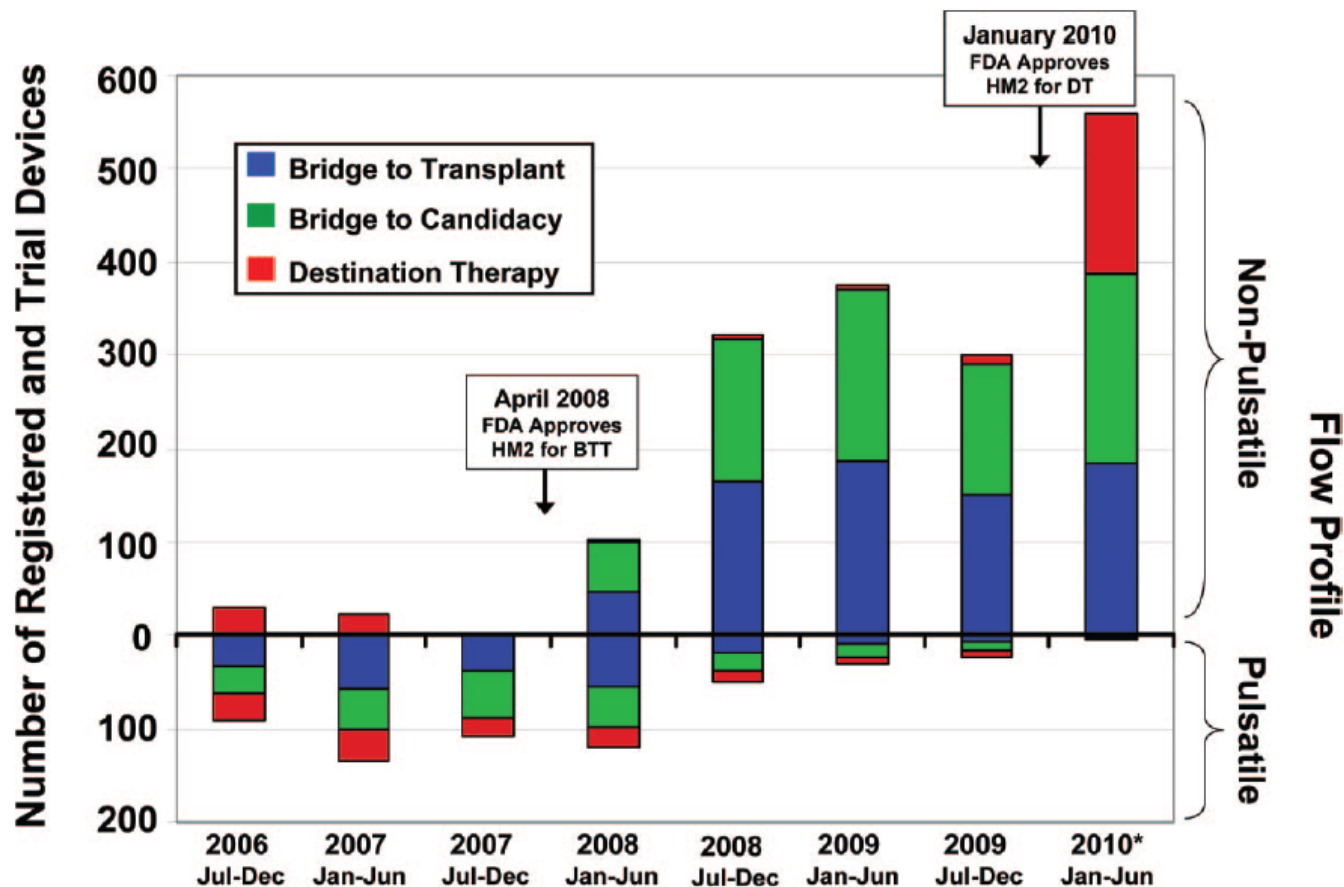
□ Indications

- ▣ BTT
 - Candidate
 - Short-term
- ▣ DT
 - *Not* a candidate
 - Long-term
- ▣ Describe different populations

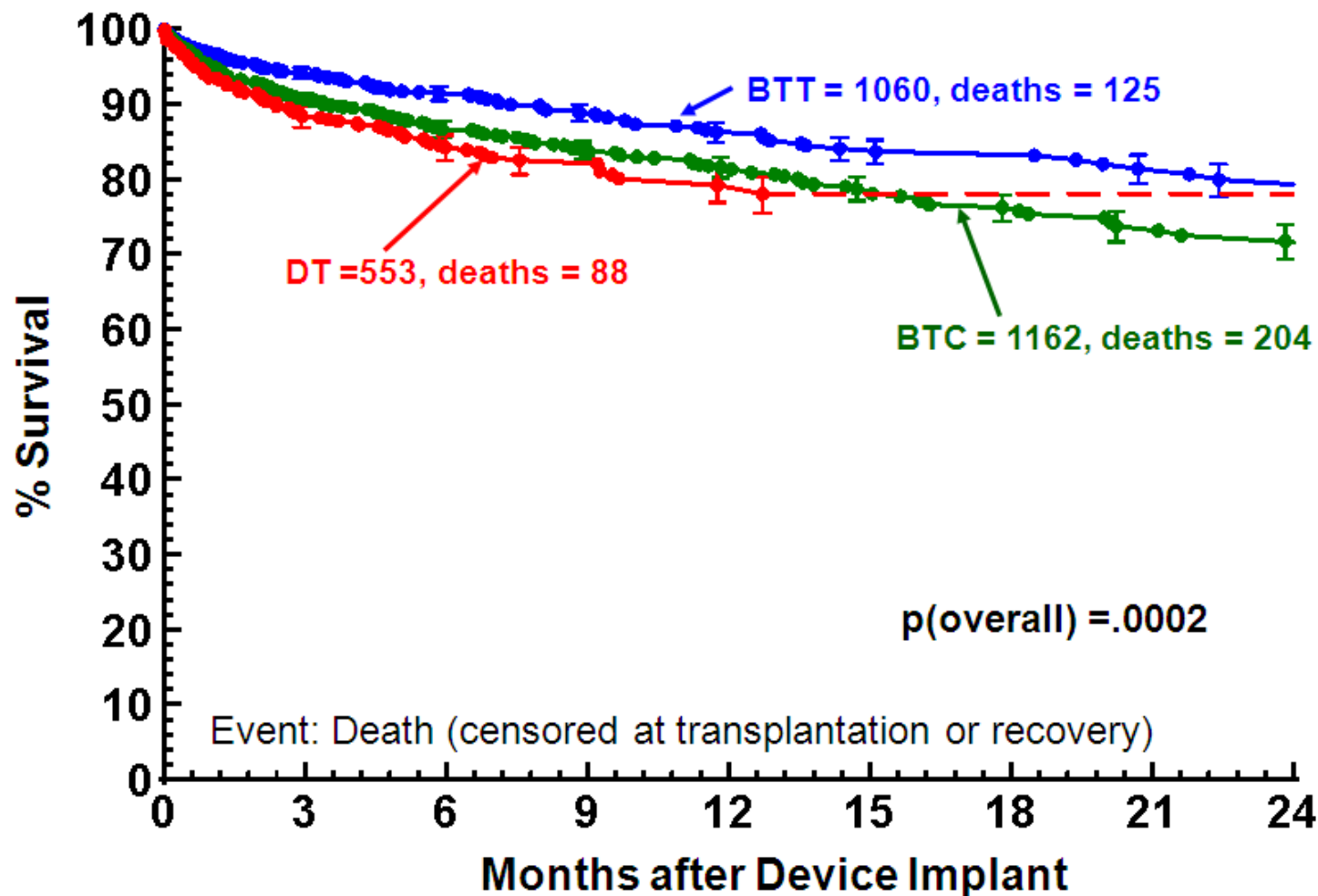
Transplant candidacy

- Definitions
 - ▣ Changes over time
 - ▣ Certainty
 - Listed at implant
 - Hope to list after implant
 - ▣ Consistency
 - Intra-institutionally
 - Inter-institutionally
 - ▣ Patient perspective
- BTT v. BTC v. DT

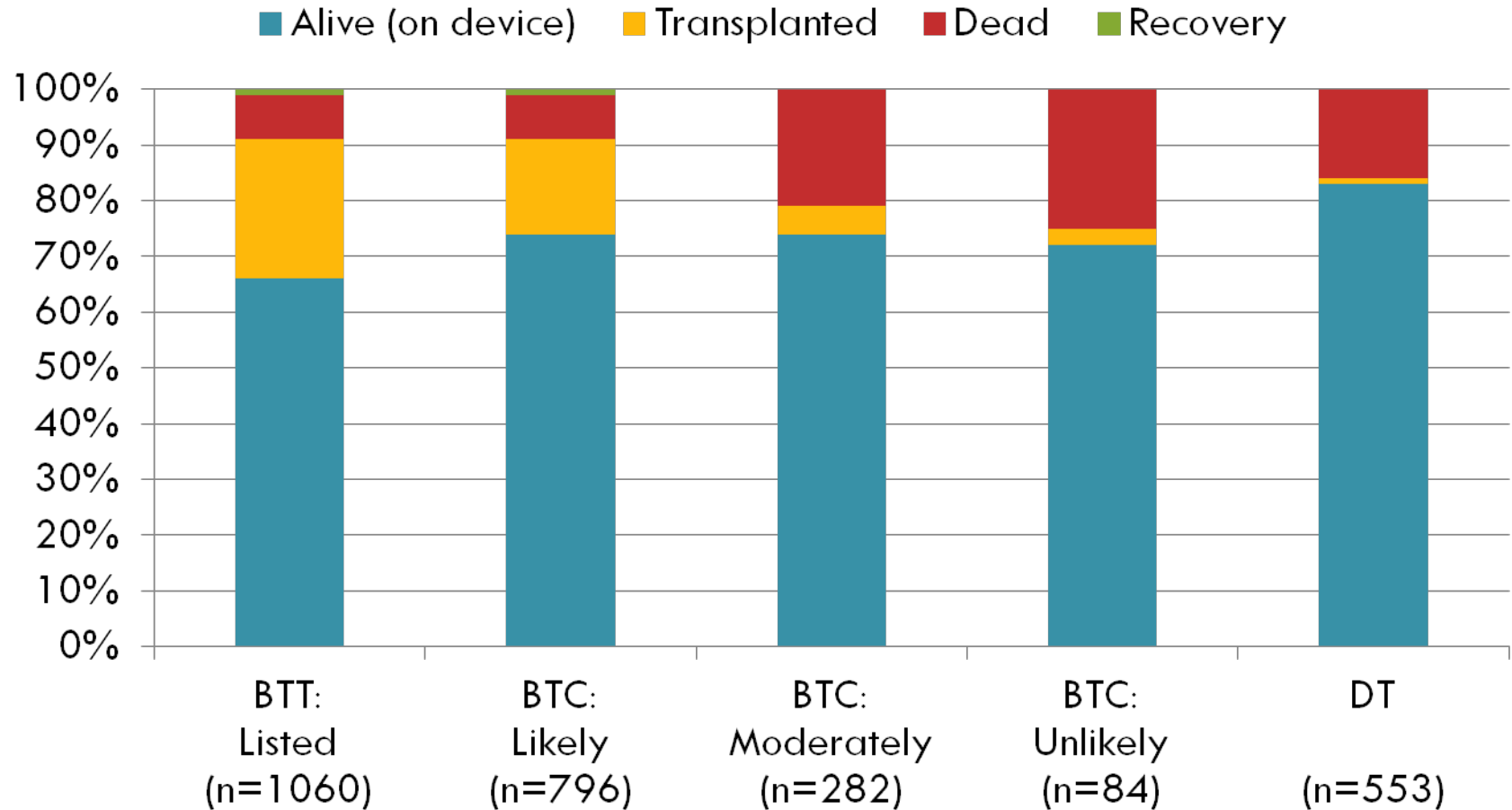
Strategies – real world



Survival – by strategy

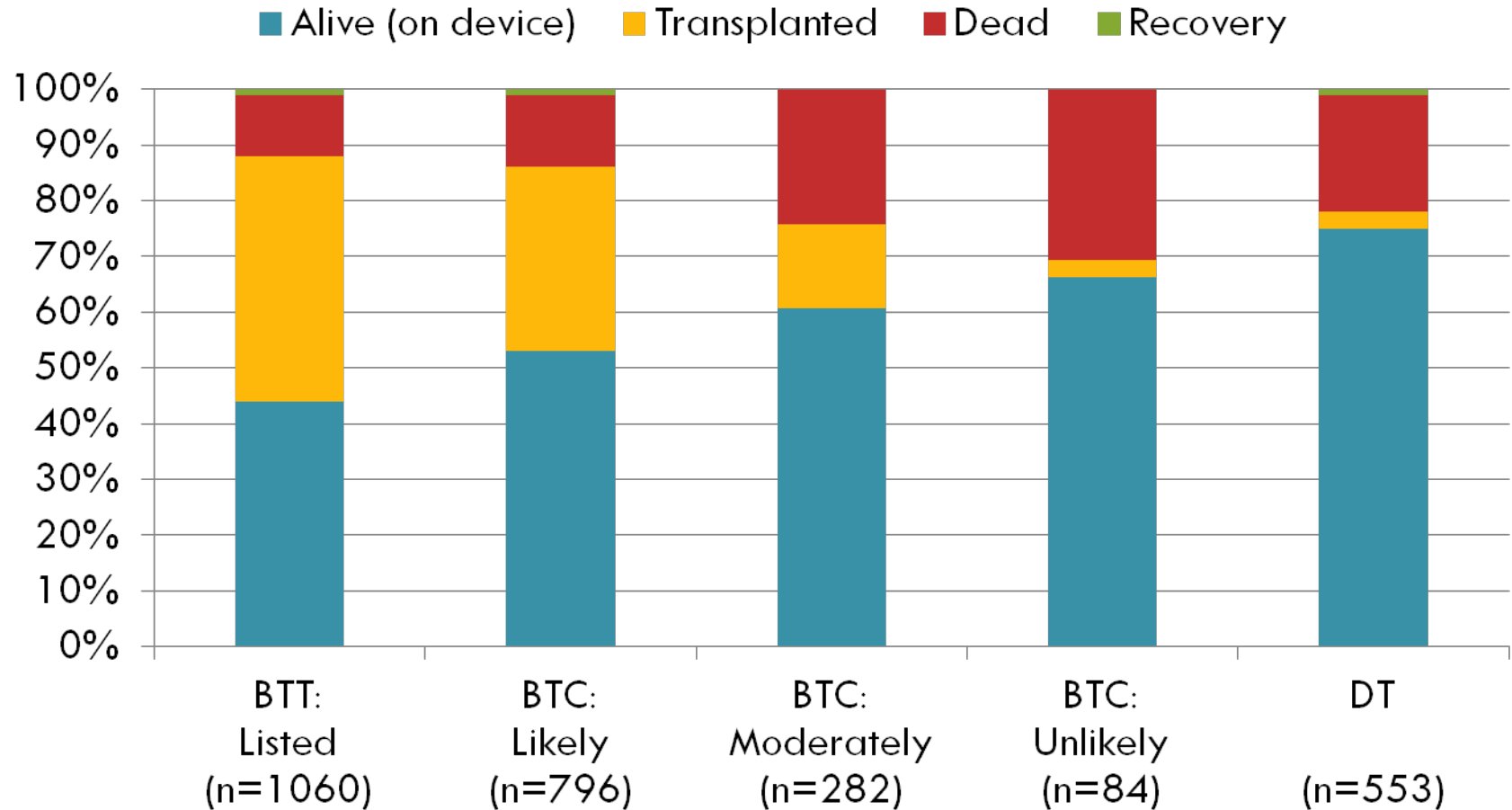


Competing outcomes: by strategy



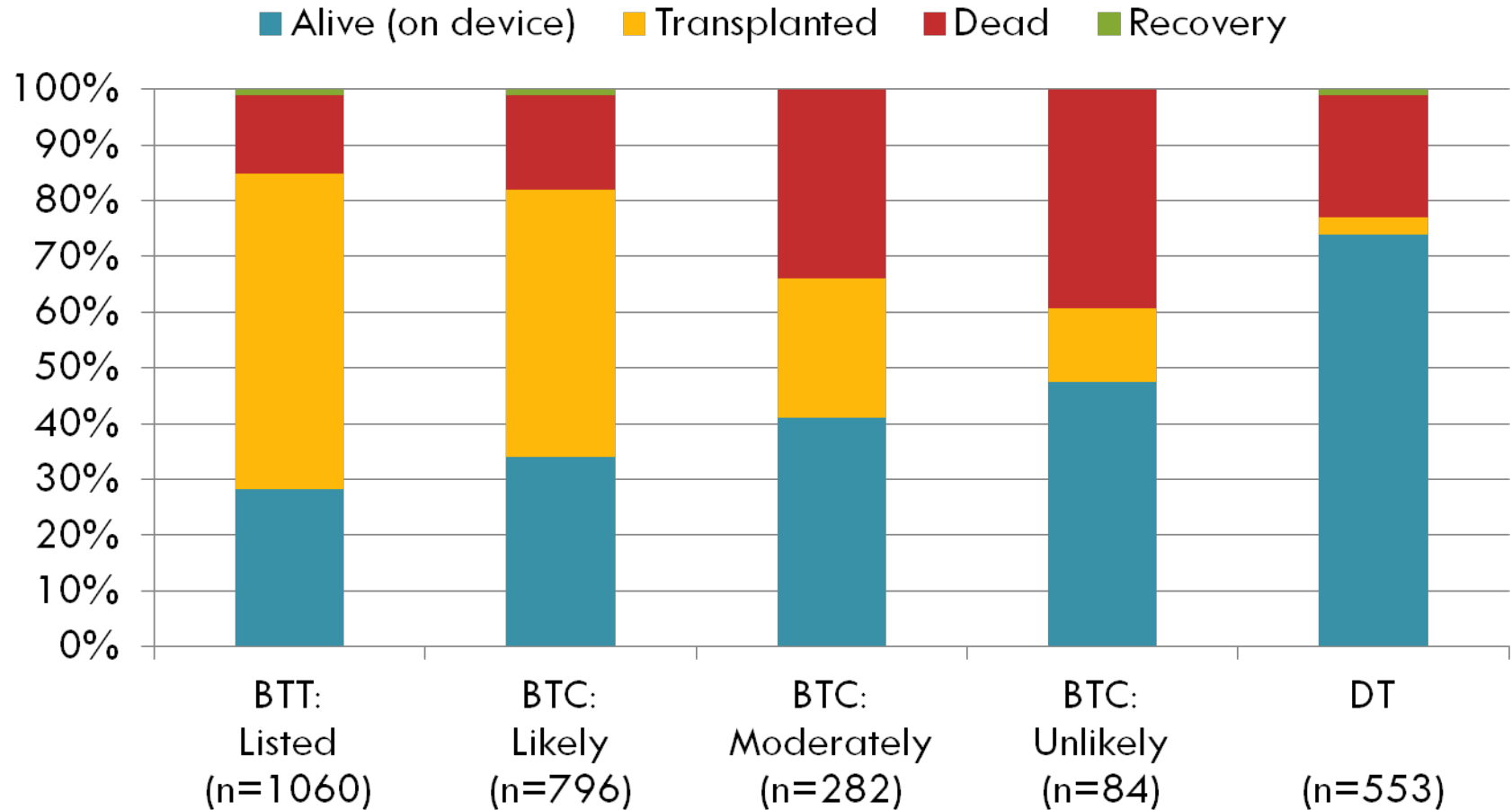
6 months

Competing outcomes: by strategy



12 months

Competing outcomes: by strategy



24 months

Patient characteristics

	BTT		BTC		DT
	Listed n=1060	Likely n=796	Moderately n=282	Unlikely n=84	n=553
Beta-Blockers	80	74	76	73	82*
ACE-I	59	55	53	48	47 [#] *
ICD	85	76	75	83	87*
Inotropes	83	80	78	76	77 [#]
Na	134	134	135	135	135 [#] *
Cr	1.4	1.4	1.5	1.7	1.5 [#] *
T. Bili	1.4	1.5	1.4	1.3	1.4
INR	1.4	1.3	1.4	1.4	1.3
Platelet	207	206	205	202	190 [#] *
Prealb	19.5	17.8	18.2	19.0	18.5

[#] p < 0.05 DT v. BTT * p < 0.05 DT v. BTC

Co-morbidities and strategy

	BTT		BTC		DT
	Listed n=1060	Likely n=796	Moderately n=282	Unlikely n=84	n=553
Age (years)	53	52	54	59	64 ^{#*}
BMI (kg/m ²)	28	28.8	31.0	30.0	28*
PVR (Woods)	2.8	2.7	3.3	2.8	2.9
COPD (%)	10	13	18	25	23 ^{#*}
Cancer (%)	6	6	8	10	15 ^{#*}
PVD (%)	4	4	6	14	13 ^{#*}
Ascites (%)	5	7	11	11	10 [#]
Tobacco (%)	7	18	17	12	11 ^{#*}
Alcohol (%)	13	17	22	23	17 [#]
Drugs (%)	1	3	4	6	2*

[#] p < 0.05 DT v. BTT * p < 0.05 DT v. BTC

Cardiac dysfunction

	BTT		BTC		DT
	Listed n=1060	Likely n=796	Moderately n=282	Unlikely n=84	n=553
Hemodynamic					
SBP (mmHg)	101	101	103	106	105*†
RA (mmHg)	12	13	14	12	11†
W (mmHg)	25	25	24	25	23†
CI (L/min/M ²)	2.1	2.1	2.2	2.2	2.2
Echo					
LVEDD (cm)	6.9	6.9*	6.9	6.9	6.9
LVEF < 20%	73	72	75	67	60
RVEF – severe	25	26	26	30	18
Mod-Sev MR	61	59	60	55	57
Mod-Sev TR	47	45	43	49	54

p < 0.05 DT v. BTT * p < 0.05 DT v. BTC

Conclusions

- BTT v. BTC v. DT
 - ▣ Disease state – same
 - ▣ Therapy – same
 - ▣ Describe a continuum
 - Patient characteristics
 - Transplant eligibility
 - ~50% of bridge patients are BTC
 - Transplant criteria vary
 - At implant, at 3 months, 6 months, when?
 - Length of support
 - BTT not necessarily short
 - DT not necessarily long-term
 - What is long-term support?
 - Outcomes
 - ▣ Strategies are fluid

Conclusions

- Knowledge gap
 - ▣ Utility of current indications – BTT and DT
 - ▣ Categorization of BTC patients
- How patients categorized impacts
 - ▣ Survival – seen in INTERMACS
 - ▣ AE, QoL, functional capacity
 - ▣ Other outcome metrics
 - ▣ Outcome prediction models



Thank you