

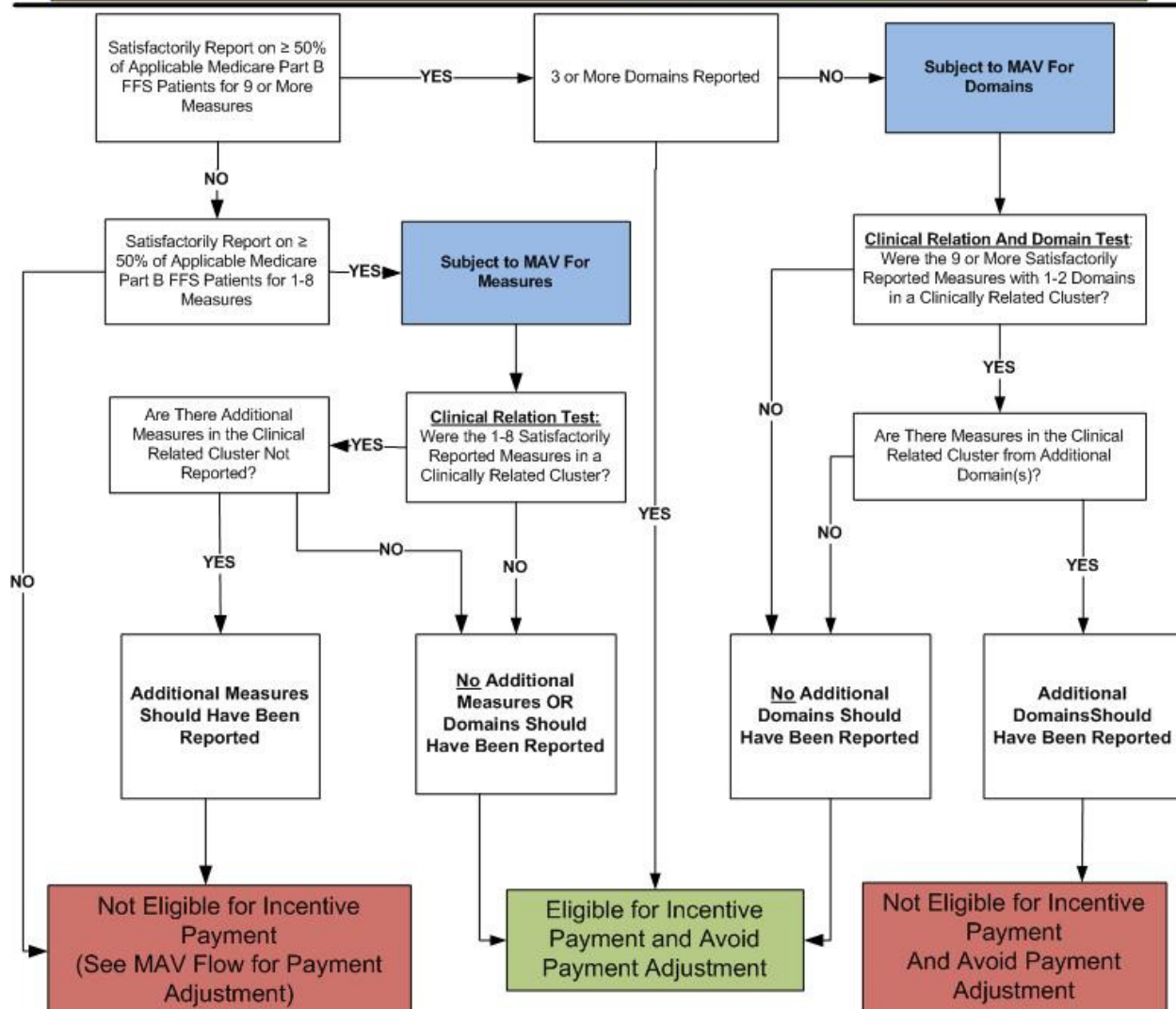
2014 Physician Quality Reporting System (PQRS) Measure-Applicability Validation (MAV) Process Flow for Registry-Based Reporting of Individual Measures for Incentive Eligibility

Registry MAV Only Applies To:

- Registry-Based Individual Measure Reporting for Eligible Professionals and Group Practices via Registry
- Reporting less than 9 measures **OR** 9 or more measures with less than 3 domains
- All reported measures must have been satisfactorily reported ($\geq 50\%$ of Applicable Medicare Part B FFS Patients)

Registry MAV Does Not Apply To:

- Measures Group, EHR, GPRO WI, Claims*, Certified Survey Vendor (CG-CAHPS) or QCDR Reporting
- Reporting 9 or more measures across at least 3 domains (satisfactorily or unsatisfactorily)
- If any measures were reported $< 50\%$ of Applicable Medicare Part B FFS Patients
- If any measures had a 0% performance rate (or 100% where a lower performance rate indicates better performance (inverse measures))



Note: Please refer to the 2014 PQRS Measure-Applicability Validation Process for Registry-Based Reporting of Individual Measures

*Claims reporting has a separate MAV process. Please refer to the 2014 PQRS MAV Process for Claims-Based Reporting of Individual Measures

**Eligible Professionals with a specialty that has less than 9 measures or less than 3 domains would be subject to MAV but could still be eligible for incentive payment or avoid the payment adjustment.

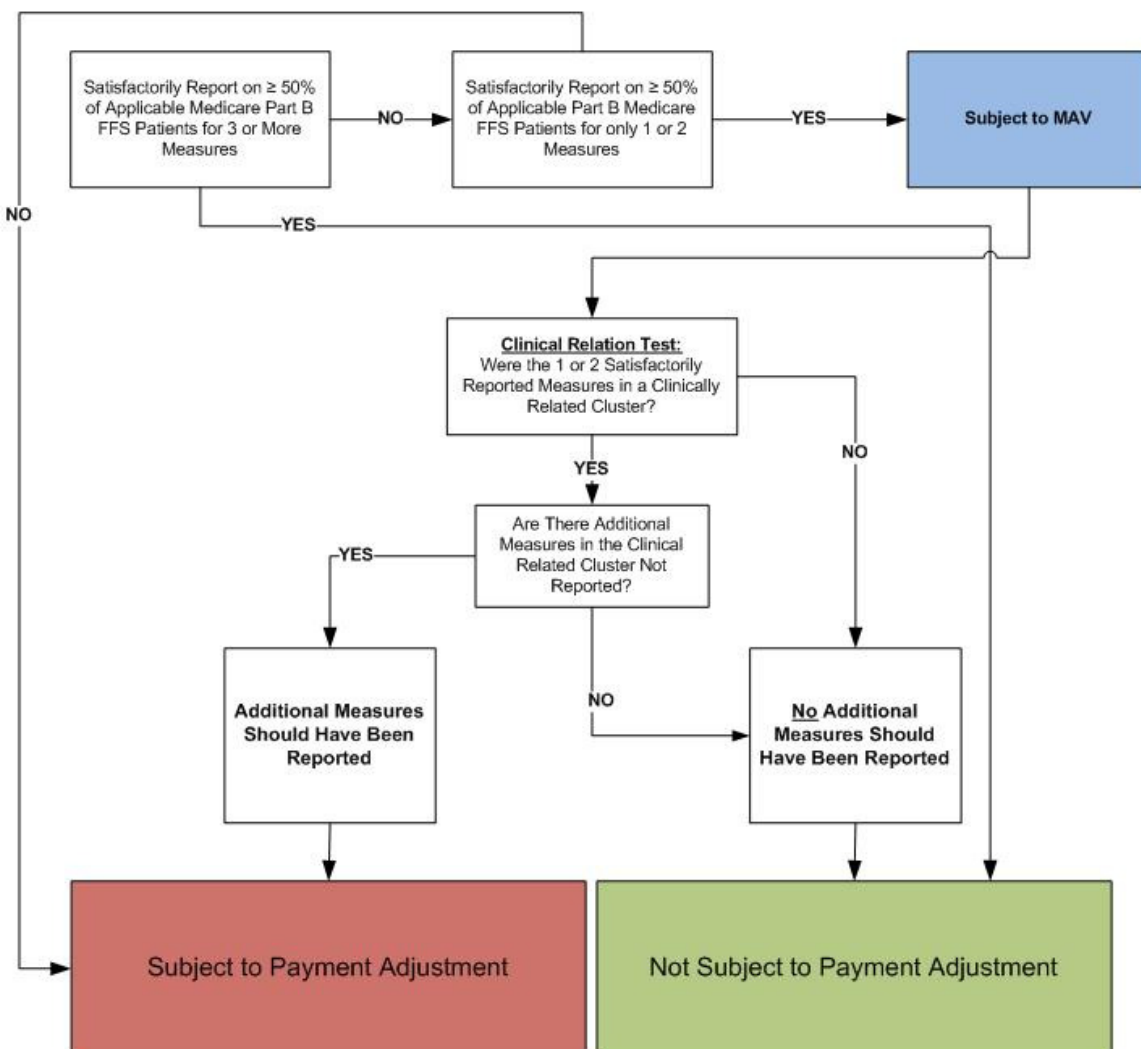
2014 Physician Quality Reporting System (PQRS) Measure-Applicability Validation (MAV) Process Flow for Registry-Based Reporting of Individual Measures for Payment Adjustment

Registry MAV Only Applies To:

- Registry-Based Individual Measure Reporting for Eligible Professionals and Group Practices via Registry
- Reporting only 1 or 2 measures
- All reported measures (<3) must have been satisfactorily reported ($\geq 50\%$ of Applicable Medicare Part B FFS Patients)

Registry MAV Does Not Apply To:

- Measures Group, EHR, GPRO WI, Claims*, Certified Survey Vendor (CG-CAHPS) or QCDR Reporting
- Reporting 3 or more measures (satisfactorily or unsatisfactorily)
- If any measures were reported < 50% of Applicable Medicare Part B FFS Patients
- If any measures had a 0% performance rate (or 100% where a lower performance rate indicates better performance (inverse measures))



Note: Please refer to the 2014 PQRS Measure-Applicability Validation Process for Registry-Based Reporting of Individual Measures

*Claims reporting has a separate MAV process. Please refer to the 2014 PQRS MAV Process for Claims-Based Reporting of Individual Measures

**Eligible Professionals with a specialty that has less than 9 measures or less than 3 domains would be subject to MAV but could still avoid the payment adjustment.