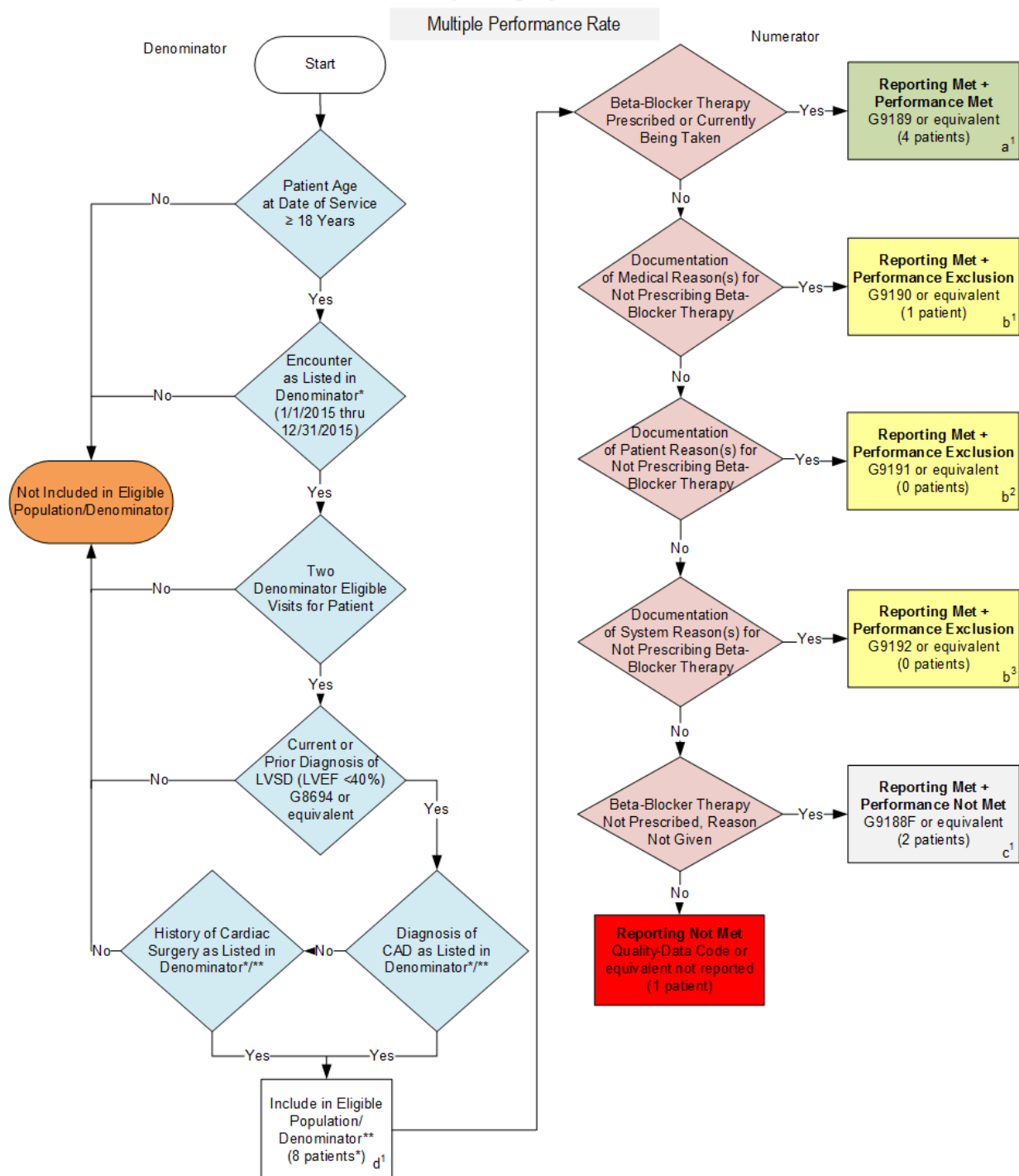


2015 Registry Individual Flow
PQRS #7 NQF #0070: Coronary Artery Disease (CAD): Beta-Blocker Therapy –
Prior Myocardial Infarction (MI) or Left Ventricular Systolic Dysfunction (LVEF < 40%)
Reporting Option One



This measure should be calculated with 2 Performance Rates. Review the Sample Calculation to ensure the reporting and performance rates are calculated accurately.

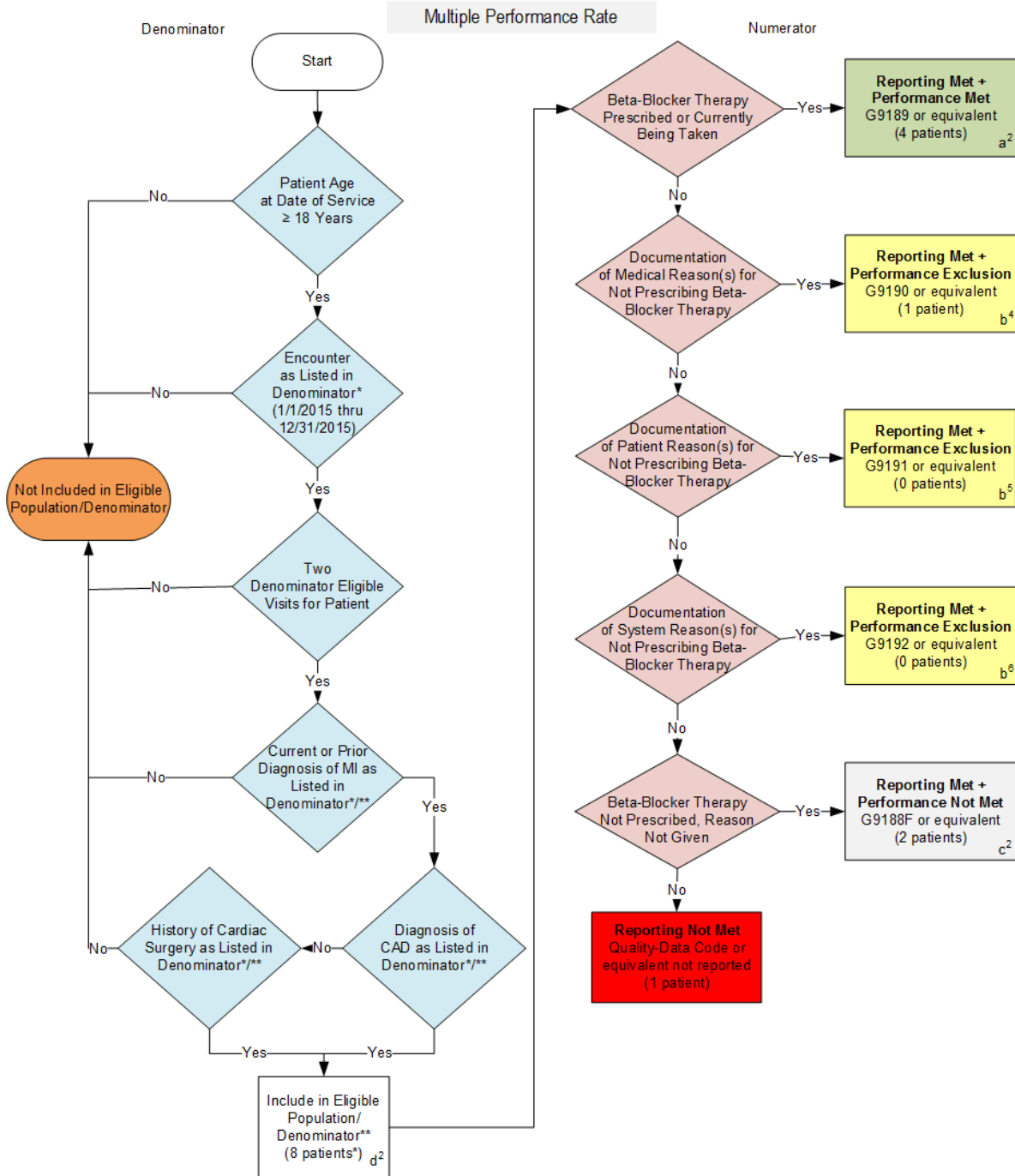
*See the posted Measure Specification for specific coding and instructions to report this measure.

** If the patient has both prior MI and LVEF < 40%, Reporting Option 1 will count as appropriate reporting for this patient.

NOTE: Reporting Frequency: Patient-process.

CPT only copyright 2014 American Medical Association. All rights reserved.

2015 Registry Individual Measure Flow
PQRS #7 NQF #0070: Coronary Artery Disease (CAD): Beta-Blocker Therapy –
Prior Myocardial Infarction (MI) or Left Ventricular Systolic Dysfunction (LVEF < 40%)
Reporting Option Two



This measure should be calculated with 2 Performance Rates. Review the Sample Calculation to ensure the reporting and performance rates are calculated accurately.

*See the posted Measure Specification for specific coding and instructions to report this measure.

** If the patient has both prior MI and LVEF < 40%, Reporting Option 1 will count as appropriate reporting for this patient.

NOTE: Reporting Frequency: Patient-process.

CPT only copyright 2014 American Medical Association. All rights reserved.

2015 Registry Individual Measure Flow
PQRS #7 NQF #0070: Coronary Artery Disease (CAD): Beta-Blocker Therapy –
Prior Myocardial Infarction (MI) or Left Ventricular Systolic Dysfunction (LVEF < 40%)

SAMPLE CALCULATION: Reporting Rate

Reporting Rate=

$$\frac{\text{Performance Met (a}^1\text{+a}^2\text{=8 patients) + Perf. Exclusion (b}^1\text{+b}^2\text{+b}^3\text{+b}^4\text{+b}^5\text{+b}^6\text{=2 patients) + Performance Not Met (c}^1\text{+c}^2\text{=4 patients)}}{\text{Eligible Population / Denominator (d}^1\text{+d}^2\text{=16 patients)}} = \frac{14 \text{ patients}}{16 \text{ patients}} = 87.50\%$$

SAMPLE CALCULATION: Performance Rate One: < 40% LVEF

Performance Rate One =

$$\frac{\text{Performance Met (a}^1\text{+a}^2\text{=4 patients)}}{\text{Reporting Numerator (7 patients) – Performance Exclusion (b}^1\text{+b}^2\text{+b}^3\text{=1 patients)}} = \frac{4 \text{ patients}}{6 \text{ patients}} = 66.67\%$$

SAMPLE CALCULATION: Performance Rate Two: Myocardial Infarction

Performance Rate Two =

$$\frac{\text{Performance Met (a}^2\text{+a}^3\text{=4 patients)}}{\text{Reporting Numerator (7 patients) – Performance Exclusion (b}^1\text{+b}^2\text{+b}^6\text{=1 patients)}} = \frac{4 \text{ patients}}{6 \text{ patients}} = 66.67\%$$

This measure should be calculated with 2 Performance Rates. Review the Sample Calculation to ensure the reporting and performance rates are calculated accurately.

NOTE: Reporting Frequency: Patient-process.

CPT only copyright 2014 American Medical Association. All rights reserved.

2015 Registry Individual Measure Flow
PQRS #7 NQF #0070: Coronary Artery Disease (CAD): Beta-Blocker Therapy –
Prior Myocardial Infarction (MI) or Left Ventricular Systolic Dysfunction
(LVEF <40%)

Please refer to the specific section of the Measure Specification to identify the denominator and numerator information for use in reporting this Individual Measure.

Reporting Option 1

1. Start with Denominator
2. Check Patient Age:
 - a. If the Age is greater than or equal to 18 years of age on Date of Service and equals No during the measurement period, do not include in Eligible Patient Population. Stop Processing.
 - b. If the Age is greater than or equal to 18 years of age on Date of Service and equals Yes during the measurement period, proceed to check Encounter Performed.
3. Check Encounter Performed:
 - a. If Encounter as Listed in the Denominator equals No, do not include in Eligible Patient Population. Stop Processing.
 - b. If Encounter as Listed in the Denominator equals Yes during the measurement period, proceed to Two Denominator Eligible Visits for Patient.
4. Check Two Denominator Eligible Visits for Patient
 - a. If there are Two Denominator Eligible Visits in the measurement period equals No, do not include in the Eligible Patient Population. Stop Processing.
 - b. If Two Denominator Eligible Visits in the measurement period equals Yes, proceed to check Current or Prior Diagnosis of LVSD (LVEF <40%).
5. Check Current or Prior Diagnosis of LVSD (LVEF <40%):
 - a. If Diagnosis of Current or Prior Diagnosis of LVSD (LVEF <40%) G8694 or equivalent as Listed in the Denominator equals No, do not include in Eligible Patient Population. Stop Processing.
 - b. If Diagnosis Current or Prior Diagnosis of LVSD (LVEF <40%) G8694 or equivalent as Listed in the Denominator equals Yes, proceed to check Patient Diagnosis.
6. Check Patient Diagnosis (CAD):
 - a. If Diagnosis of CAD as Listed in the Denominator equals No, do not include in Eligible Patient Population. Stop Processing.
 - b. If Diagnosis of CAD as Listed in the Denominator equals Yes, proceed to Check Patient Procedure.
7. Check Patient Procedure:
 - a. If History of Cardiac Surgery as Listed in the Denominator equals No, do not include in Eligible Patient Population. Stop Processing.

- b. If History of Cardiac Surgery as Listed in the Denominator equals Yes, include in the Eligible population.
- 8. Denominator Population:
 - a. Denominator population is all Eligible Patients in the denominator. Denominator is represented as Denominator in the Sample Calculation listed at the end of this document. Letter d¹ equals 8 patients in the sample calculation.
- 9. Start Numerator
- 10. Check Beta-Blocker Therapy Prescribed or is Currently Being Taken:
 - a. If Beta-Blocker Therapy was Prescribed or is Currently Being Taken equals Yes, include in Reporting Met and Performance Met.
 - b. Reporting Met and Performance Met letter is represented in the Reporting Rate and Performance Rate in the Sample Calculation listed at the end of this document. Letter a¹ equals 4 patients in Sample Calculation.
 - c. If Beta-Blocker Therapy was Prescribed or is Currently Being Taken equals No, proceed to Documentation of Medical Reason(s) for Not Prescribing Beta-Blocker Therapy.
- 11. Check Documentation of Medical Reason(s) for Not Prescribing Beta-Blocker Therapy:
 - a. If Documentation of Medical Reason(s) for Not Prescribing Beta-Blocker Therapy equals Yes, include in Reporting Met and Performance Exclusion.
 - b. Reporting Met and Performance Exclusion letter is represented in the Reporting Rate and Performance Rate in the Sample Calculation listed at the end of this document. Letter b¹ equals 1 patient in the Sample Calculation.
 - c. If Documentation of Medical Reason(s) for Not Prescribing Beta-Blocker Therapy equals No, proceed to Documentation of Patient Reason(s) for Not Prescribing Beta-Blocker Therapy.
- 12. Check Documentation of Patient Reason(s) for Not Prescribing Beta-Blocker Therapy:
 - a. If Documentation of Patient Reason(s) for Not Prescribing Beta-Blocker Therapy equals Yes, include in Reporting Met and Performance Exclusion.
 - b. Reporting Met and Performance Exclusion letter is represented in the Reporting Rate in the Sample Calculation listed at the end of this document. Letter b² equals 0 patients in the Sample Calculation.
 - c. If Documentation of Patient Reason(s) for Not Prescribing Beta-Blocker Therapy equals No, proceed to Documentation of System Reason(s) for Not Prescribing Beta-Blocker Therapy.
- 13. Check Documentation of System Reason(s) for Not Prescribing Beta-Blocker Therapy:
 - a. If Documentation of System Reason(s) for Not Prescribing Beta-Blocker Therapy equals Yes, include in Reporting Met and Performance Exclusion.
 - b. Reporting Met and Performance Exclusion letter is represented in the Reporting Rate in the Sample Calculation listed at the end of this document. Letter b³ equals 0 patients in the Sample Calculation.
 - c. If Documentation of System Reason(s) for Not Prescribing Beta-Blocker Therapy equals No, proceed to Beta-Blocker Therapy Not Prescribed, Reason Not Given.
- 14. Check Beta-Blocker Therapy Not Prescribed, Reason Not Given:

- a. If Beta-Blocker Therapy Not Prescribed, Reason Not Given equals Yes, include in Reporting Met and Performance Not Met.
- b. Reporting Met and Performance Not Met letter is represented in the Reporting Rate in the Sample Calculation listed at the end of this document. Letter c¹ equals 2 patients in the Sample Calculation.
- c. If Beta-Blocker Therapy Not Prescribed, Reason Not Given equals No, proceed to Reporting Not Met.

15. Check Reporting Not Met

- a. If Reporting Not Met, the Quality Data Code or equivalent was not reported. 1 patient has been subtracted from the reporting numerator in sample calculation.

2015 Registry Individual Measure Flow
PQRS #7 NQF #0070: Coronary Artery Disease (CAD): Beta-Blocker Therapy –
Prior Myocardial Infarction (MI) or Left Ventricular Systolic Dysfunction
(LVEF <40%)

Please refer to the specific section of the Measure Specification to identify the denominator and numerator information for use in reporting this Individual Measure.

Reporting Option 2

1. Start with Denominator
2. Check Patient Age:
 - a. If the Age is greater than or equal to 18 years of age on Date of Service and equals No during the measurement period, do not include in Eligible Patient Population. Stop Processing.
 - b. If the Age is greater than or equal to 18 years of age on Date of Service and equals Yes during the measurement period, proceed to check Encounter Performed.
3. Check Encounter Performed:
 - a. If Encounter as Listed in the Denominator equals No, do not include in Eligible Patient Population. Stop Processing.
 - b. If Encounter as Listed in the Denominator equals Yes during the measurement period, proceed to Two Denominator Eligible Visits for Patient.
4. Check Two Denominator Eligible Visits for Patient
 - a. If there are Two Denominator Eligible Visits in the measurement period equals No, do not include in the Eligible Patient Population. Stop Processing.
 - b. If Two Denominator Eligible Visits in the measurement period equals Yes, proceed to check Current or Prior Diagnosis of LVSD (LVEF <40%).
5. Check Current or Prior Diagnosis of LVSD (LVEF <40%):
 - a. If Diagnosis of Current or Prior Diagnosis of LVSD (LVEF <40%) G8694 or equivalent as Listed in the Denominator equals No, do not include in Eligible Patient Population. Stop Processing.
 - b. If Diagnosis Current or Prior Diagnosis of LVSD (LVEF <40%) G8694 or equivalent as Listed in the Denominator equals Yes, proceed to check Patient Diagnosis.
6. Check Patient Diagnosis (CAD):
 - a. If Diagnosis of CAD as Listed in the Denominator equals No, do not include in Eligible Patient Population. Stop Processing.
 - b. If Diagnosis of CAD as Listed in the Denominator equals Yes, proceed to Check Patient Procedure.
7. Check Patient Procedure:
 - a. If History of Cardiac Surgery as Listed in the Denominator equals No, do not include in Eligible Patient Population. Stop Processing.

- b. If History of Cardiac Surgery as Listed in the Denominator equals Yes, include in the Eligible population.
- 8. Denominator Population:
 - a. Denominator population is all Eligible Patients in the denominator. Denominator is represented as Denominator in the Sample Calculation listed at the end of this document. Letter d¹ equals 8 patients in the sample calculation.
- 9. Start Numerator
- 10. Check Beta-Blocker Therapy Prescribed or is Currently Being Taken:
 - a. If Beta-Blocker Therapy was Prescribed or is Currently Being Taken equals Yes, include in Reporting Met and Performance Met.
 - b. Reporting Met and Performance Met letter is represented in the Reporting Rate and Performance Rate in the Sample Calculation listed at the end of this document. Letter a² equals 4 patients in Sample Calculation.
 - c. If Beta-Blocker Therapy was Prescribed or is Currently Being Taken equals No, proceed to Documentation of Medical Reason(s) for Not Prescribing Beta-Blocker Therapy.
- 11. Check Documentation of Medical Reason(s) for Not Prescribing Beta-Blocker Therapy:
 - a. If Documentation of Medical Reason(s) for Not Prescribing Beta-Blocker Therapy equals Yes, include in Reporting Met and Performance Exclusion.
 - b. Reporting Met and Performance Exclusion letter is represented in the Reporting Rate and Performance Rate in the Sample Calculation listed at the end of this document. Letter b⁴ equals 1 patient in the Sample Calculation.
 - c. If Documentation of Medical Reason(s) for Not Prescribing Beta-Blocker Therapy equals No, proceed to Documentation of Patient Reason(s) for Not Prescribing Beta-Blocker Therapy.
- 12. Check Documentation of Patient Reason(s) for Not Prescribing Beta-Blocker Therapy:
 - a. If Documentation of Patient Reason(s) for Not Prescribing Beta-Blocker Therapy equals Yes, include in Reporting Met and Performance Exclusion.
 - b. Reporting Met and Performance Exclusion letter is represented in the Reporting Rate in the Sample Calculation listed at the end of this document. Letter b⁵ equals 0 patients in the Sample Calculation.
 - c. If Documentation of Patient Reason(s) for Not Prescribing Beta-Blocker Therapy equals No, proceed to Documentation of System Reason(s) for Not Prescribing Beta-Blocker Therapy.
- 13. Check Documentation of System Reason(s) for Not Prescribing Beta-Blocker Therapy:
 - a. If Documentation of System Reason(s) for Not Prescribing Beta-Blocker Therapy equals Yes, include in Reporting Met and Performance Exclusion.
 - b. Reporting Met and Performance Exclusion letter is represented in the Reporting Rate in the Sample Calculation listed at the end of this document. Letter b⁶ equals 0 patients in the Sample Calculation.
 - c. If Documentation of System Reason(s) for Not Prescribing Beta-Blocker Therapy equals No, proceed to Beta-Blocker Therapy Not Prescribed, Reason Not Given.
- 14. Check Beta-Blocker Therapy Not Prescribed, Reason Not Given:

- a. If Beta-Blocker Therapy Not Prescribed, Reason Not Given equals Yes, include in Reporting Met and Performance Not Met.
- b. Reporting Met and Performance Not Met letter is represented in the Reporting Rate in the Sample Calculation listed at the end of this document. Letter c² equals 2 patients in the Sample Calculation.
- c. If Beta-Blocker Therapy Not Prescribed, Reason Not Given equals No, proceed to Reporting Not Met.

15. Check Reporting Not Met

- a. If Reporting Not Met, the Quality Data Code or equivalent was not reported. 1 patient has been subtracted from the reporting numerator in sample calculation.

SAMPLE CALCULATION: Reporting Rate

Reporting Rate=

$$\frac{\text{Performance Met (a}^1+\text{a}^2=8 \text{ patients) + Perf. Exclusion (b}^1+\text{b}^2+\text{b}^3+\text{b}^4+\text{b}^5+\text{b}^6=2 \text{ patients) + Performance Not Met (c}^1+\text{c}^2=4 \text{ patients)}}{\text{Eligible Population / Denominator (d}^1+\text{d}^2=16 \text{ patients)}} = \frac{14 \text{ patients}}{16 \text{ patients}} = 87.50\%$$

SAMPLE CALCULATION: Performance Rate One: < 40% LVEF

Performance Rate One =

$$\frac{\text{Performance Met (a}^1+=4 \text{ patients)}}{\text{Reporting Numerator (7 patients) – Performance Exclusion (b}^1+\text{b}^2+\text{b}^3=1 \text{ patients)}} = \frac{4 \text{ patients}}{6 \text{ patients}} = 66.67\%$$

SAMPLE CALCULATION: Performance Rate Two: Myocardial Infarction

Performance Rate Two =

$$\frac{\text{Performance Met (a}^2+=4 \text{ patients)}}{\text{Reporting Numerator (7 patients) – Performance Exclusion (b}^4+\text{b}^5+\text{b}^6=1 \text{ patients)}} = \frac{4 \text{ patients}}{6 \text{ patients}} = 66.67\%$$