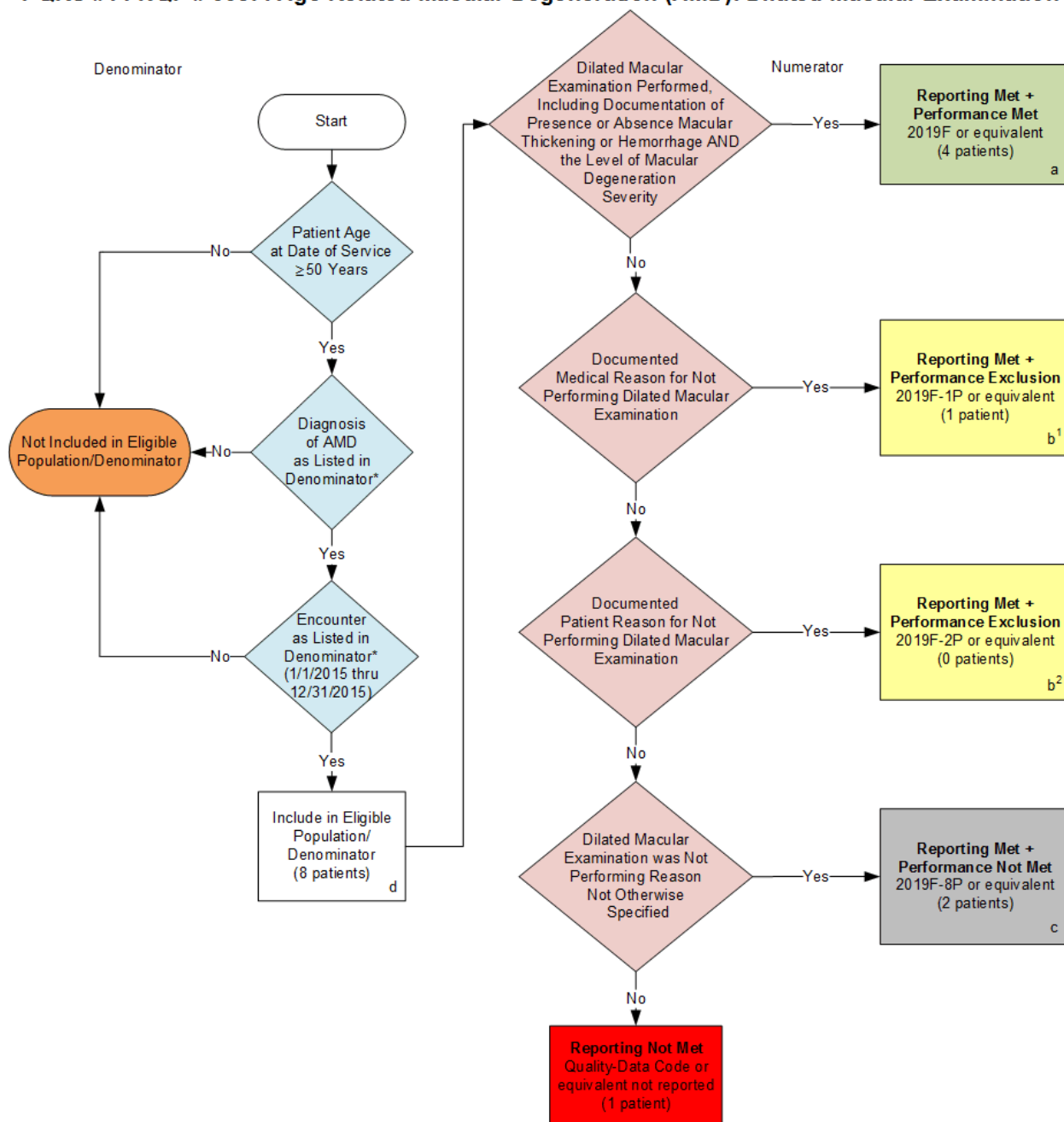


**2015 Claims/Registry Individual Measure Flow**  
**PQRS #14 NQF # 0087: Age-Related Macular Degeneration (AMD): Dilated Macular Examination**



**SAMPLE CALCULATIONS:**

**Reporting Rate=**

$$\frac{\text{Performance Met (a=4 patients)} + \text{Performance Exclusion (b¹+b²=1 patient)} + \text{Performance Not Met (c=2 patients)}}{\text{Eligible Population / Denominator (d=8 patients)}} = \frac{7 \text{ patients}}{8 \text{ patients}} = 87.50\%$$

**Performance Rate=**

$$\frac{\text{Performance Met (a=4 patients)}}{\text{Reporting Numerator (7 patients) - Performance Exclusion (b¹+b²=1 patient)}} = \frac{4 \text{ patients}}{6 \text{ patients}} = 66.66\%$$

\*See the posted Measure Specification for specific coding and instructions to report this measure.

NOTE: Reporting Frequency: Patient-process

CPT only copyright 2014 American Medical Association. All rights reserved.

**2015 Claims/Registry Individual Measure Flow**  
**PQRS #14 NQF #0087: Age-Related Macular Degeneration (AMD): Dilated Macular Examination**

Please refer to the specific section of the Measure Specification to identify the denominator and numerator information for use in reporting this Individual Measure.

1. Start with Denominator
2. Check Patient Age:
  - a. If the Age is greater than or equal to 50 years of age on Date of Service equals No during the measurement period, do not include in Eligible Patient Population. Stop Processing.
  - b. If the Age is greater than or equal to 50 years of age on Date of Service equals Yes during the measurement period, proceed to check Patient Diagnosis.
3. Check Patient Diagnosis:
  - a. If Diagnosis of AMD as Listed in the Denominator equals No, do not include in Eligible Patient Population. Stop Processing.
  - b. If Diagnosis of AMD as Listed in the Denominator equals Yes, proceed to check Encounter Performed.
4. Check Encounter Performed:
  - a. If Encounter as Listed in the Denominator equals No, do not include in Eligible Patient Population. Stop Processing.
  - b. If Encounter as Listed in the Denominator equals Yes, include in the Eligible population.
5. Denominator Population:
  - a. Denominator population is all Eligible Patients in the denominator. Denominator is represented as Denominator in the Sample Calculation listed at the end of this document. Letter d equals 8 patients in the sample calculation.
6. Start Numerator
7. Check Dilated Macular Examination Performed Including Documentation of Presence or Absence Macular Thickening or Hemorrhage AND the Level of Macular Degeneration Severity:
  - a. If Dilated Macular Examination Performed Including Documentation of Presence or Absence Macular Thickening or Hemorrhage AND the Level of Macular Degeneration Severity equals Yes, include in Reporting Met and Performance Met.
  - b. Reporting Met and Performance Met letter is represented in the Reporting Rate and Performance Rate in the Sample Calculation listed at the end of this document. Letter a equals 4 patients in Sample Calculation.
  - c. If If Dilated Macular Examination Performed Including Documentation of Presence or Absence Macular Thickening or Hemorrhage AND the Level of Macular Degeneration Severity equals No, proceed to Documented Medical Reason for not Performing Dilated Macular Examination.

8. Check Documented Medical Reason for Not Performing Dilated Macular Examination:
  - a. If Documented Medical Reason for Not Performing Dilated Macular Examination equals Yes, include in reporting met and performance exclusion.
  - b. Reporting Met and Performance Exclusion letter is represented in the Reporting Rate and Performance Rate in the Sample Calculation listed at the end of this document. Letter b<sup>1</sup> equals 1 patient in the Sample Calculation.
  - c. If Documented Medical Reason for Not Performing Dilated Macular Examination equals No, proceed to Documented Patient Reason for not Performing Dilated Macular Examination.
  
9. Check Documented Patient Reason for not Performing Dilated Macular Examination:
  - a. If Documented Patient Reason for not Performing Dilated Macular Examination equals Yes, include in Reporting Met and Performance Exclusion.
  - b. Reporting Met and Performance Exclusion letter is represented in the Reporting Rate and Performance Rate in the Sample Calculation listed at the end of this document. Letter b<sup>2</sup> equals 0 patients in the Sample Calculation.
  - c. If Documented Patient Reason for not Performing Dilated Macular Examination equals No, proceed to Dilated Macular Examination was Not Performed, Reason Not Otherwise Specified.
  
10. Check Dilated Macular Examination was Not Performed, Reason Not Otherwise Specified:
  - a. If Dilated Macular Examination was Not Performed, Reason Not Otherwise Specified equals Yes, include in the reporting met and performance not met.
  - b. Reporting Met and Performance Not Met letter is represented in the Reporting Rate in the Sample Calculation listed at the end of this document. Letter c equals 2 patients in the Sample Calculation.
  - c. If Dilated Macular Examination was Not Performed, Reason Not Otherwise Specified equals No, proceed to Reporting Not Met.
  
11. Check Reporting Not Met:
  - a. If Reporting Not Met equals No, Quality Data Code or equivalent not reported. 1 patient has been subtracted from reporting numerator in the sample calculation.

#### **SAMPLE CALCULATIONS:**

##### **Reporting Rate=**

$$\frac{\text{Performance Met (a=4 patients)} + \text{Performance Exclusion (b}^1\text{+b}^2\text{=1 patient)} + \text{Performance Not Met (c=2 patients)}}{\text{Eligible Population / Denominator (d=8 patients)}} = \frac{7 \text{ patients}}{8 \text{ patients}} = 87.50\%$$

##### **Performance Rate=**

$$\frac{\text{Performance Met (a=4 patients)}}{\text{Reporting Numerator (7 patients) - Performance Exclusion (b}^1\text{+b}^2\text{=1 patient)}} = \frac{4 \text{ patients}}{6 \text{ patients}} = 66.66\%$$