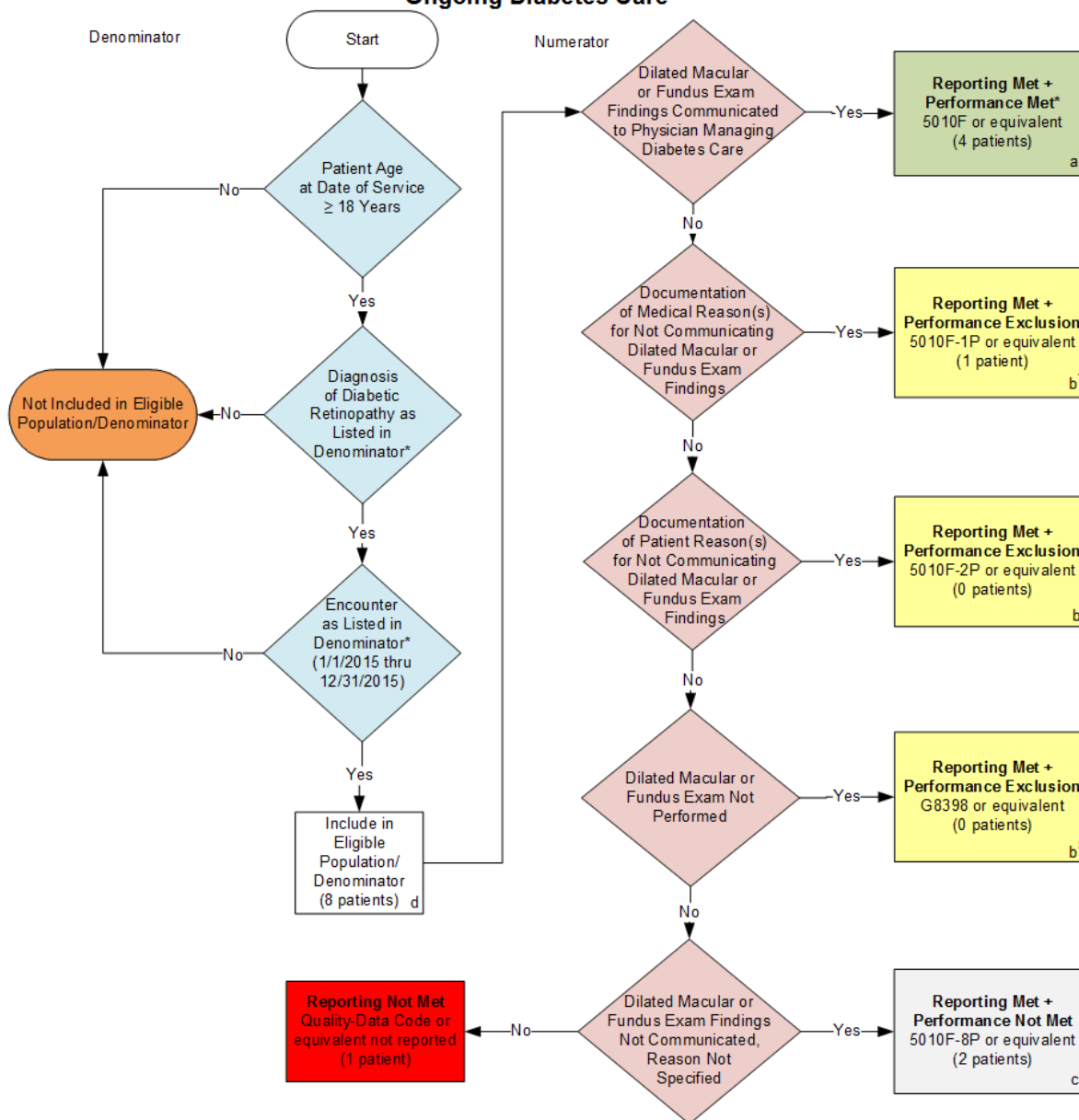


**2015 Claims Individual Measure Flow**  
**PQRS #19 NQF #0089: Diabetic Retinopathy: Communication with the Physician Managing Ongoing Diabetes Care**



**SAMPLE CALCULATIONS:**

**Reporting Rate=**

Performance Met (a=4 patients) + Performance Exclusion (b¹+b²+b³=1 patient) + Performance Not Met (c=2 patients) = 7 patients = 87.50%  
 Eligible Population / Denominator (d=8 patients) = 8 patients

**Performance Rate=**

Performance Met (a=4 patients) = 4 patients = 66.66%  
 Reporting Numerator (7 patients) - Performance Exclusion (b¹+b²+b³=1 patient) = 6 patients

\*See the posted Measure Specification for specific coding and instructions to report this measure.

NOTE: Reporting Frequency – Patient-process

CPT only copyright 2014 American Medical Association. All rights reserved.

v1

**2015 Claims Individual Measure Flow**  
**PQRS #19 NQF #0089: Diabetic Retinopathy: Communication with the Physician**  
**Managing Ongoing Diabetes Care**

Please refer to the specific section of the Measure Specification to identify the denominator and numerator information for use in reporting this Individual Measure.

1. Start with Denominator
2. Check Patient Age:
  - a. If the Age is greater than or equal to 18 years of age on Date of Service and equals No during the measurement period, do not include in Eligible Patient Population. Stop Processing.
  - b. If the Age is greater than or equal to 18 years of age on Date of Service and equals Yes during the measurement period, proceed to check Patient Diagnosis.
3. Check Patient Diagnosis:
  - a. If Diagnosis of Diabetic Retinopathy as Listed in the Denominator equals No, do not include in Eligible Patient Population. Stop Processing.
  - b. If Diagnosis of Diabetic Retinopathy as Listed in the Denominator equals Yes, proceed to check Encounter Performed
4. Check Encounter Performed:
  - a. If Encounter as Listed in the Denominator equals No, do not include in Eligible Patient Population. Stop Processing.
  - b. If Encounter as Listed in the Denominator equals Yes, include in the Eligible population.
5. Denominator Population:
  - a. Denominator population is all Eligible Patients in the denominator. Denominator is represented as Denominator in the Sample Calculation listed at the end of this document. Letter d equals 8 patients in the sample calculation.
6. Start Numerator
7. Check Dilated Macular or Fundus Exam Findings Communicated to Physician Managing Diabetes Care:
  - a. If Dilated Macular or Fundus Exam Findings Communicated to Physician Managing Diabetes Care equals Yes, include in Reporting Met and Performance Met.
  - b. Reporting Met and Performance Met letter is represented in the Reporting Rate and Performance Rate in the Sample Calculation listed at the end of this document. Letter a equals 4 patients in Sample Calculation.
  - c. If Dilated Macular or Fundus Exam Findings Communicated to Physician Managing Diabetes Care equals No, proceed to Documentation of Medical Reason(s) for Not Communicating Dilated Macular or Fundus Exam findings.
8. Check Documentation of Medical Reason(s) for Not Communicating Dilated Macular or Fundus Exam findings:

- a. If Documentation of Medical Reason(s) for Not Communicating Dilated Macular or Fundus Exam findings equals Yes, include in Reporting Met and Performance Exclusion.
  - b. Reporting Met and Performance Exclusion letter is represented in the Reporting Rate and Performance Rate in the Sample Calculation listed at the end of this document. Letter b<sup>1</sup> equals 1 patient in the Sample Calculation.
  - c. If Documentation of Medical Reason(s) for Not Communicating Dilated Macular or Fundus Exam findings equals No, proceed to Documentation of Patient Reason(s) for Not Communicating Dilated Macular or Fundus Exam findings.
9. Check Documentation of Patient Reason(s) for Not Communicating Dilated Macular or Fundus Exam findings:
  - a. If Documentation of Patient Reason(s) for Not Communicating Dilated Macular or Fundus Exam findings equals Yes, include in Reporting Met and Performance Exclusion.
  - b. Reporting Met and Performance Exclusion letter is represented in the Reporting Rate in the Sample Calculation listed at the end of this document. Letter b<sup>2</sup> equals 0 patients in the Sample Calculation.
  - c. If Documentation of Patient Reason(s) for Not Communicating Dilated Macular or Fundus Exam findings equals No, proceed to Dilated Macular or Fundus Exam Findings Not Communicated, Reason Not Specified.
10. Check Dilated Macular or Fundus Exam Not Performed:
  - a. If Dilated Macular or Fundus Exam Not Performed equals Yes, include in Reporting Met and Performance Exclusion.
  - b. Reporting Met and Performance Exclusion letter is represented in the Reporting Rate in the Sample Calculation listed at the end of this document. Letter b<sup>3</sup> equals 0 patients in the Sample Calculation.
  - c. If Dilated Macular or Fundus Exam Not Performed equals No, proceed to Dilated Macular or Fundus Exam Findings Not Communicated.
11. Check Dilated Macular or Fundus Exam Findings Not Communicated, Reason Not Specified:
  - a. If Dilated Macular or Fundus Exam Findings Not Communicated, Reason Not Specified equals Yes, include in Reporting Met and Performance Not Met.
  - b. Reporting Met and Performance Not Met letter is represented in the Reporting Rate in the Sample Calculation listed at the end of this document. Letter c equals 2 patients in the Sample Calculation.
  - c. If Dilated Macular or Fundus Exam Findings Not Communicated, Reason Not Specified equals No, proceed to Reporting Not Met.
12. Check Reporting Not Met
  - a. If Reporting Not Met, the Quality Data Code or equivalent was not reported. 1 patient has been subtracted from the reporting numerator in sample calculation.

**SAMPLE CALCULATIONS:**

**Reporting Rate=**

$$\frac{\text{Performance Met (a=4 patients)} + \text{Performance Exclusion (b}^1\text{+b}^2\text{+b}^3\text{=1 patient)} + \text{Performance Not Met (c=2 patients)}}{\text{Eligible Population / Denominator (d=8 patients)}} = \frac{7 \text{ patients}}{8 \text{ patients}} = 87.50\%$$

**Performance Rate=**

$$\frac{\text{Performance Met (a=4 patients)}}{\text{Reporting Numerator (7 patients) - Performance Exclusion (b}^1\text{+b}^2\text{+b}^3\text{=1 patient)}} = \frac{4 \text{ patients}}{6 \text{ patients}} = 66.66\%$$

**2015 Registry Individual Measure Flow**  
**PQRS #19 NQF #0089: Diabetic Retinopathy: Communication with the Physician**  
**Managing Ongoing Diabetes Care**

Please refer to the specific section of the Measure Specification to identify the denominator and numerator information for use in reporting this Individual Measure.

1. Start with Denominator
2. Check Patient Age:
  - a. If the Age is greater than or equal to 18 years of age on Date of Service and equals No during the measurement period, do not include in Eligible Patient Population. Stop Processing.
  - b. If the Age is greater than or equal to 18 years of age on Date of Service and equals Yes during the measurement period, proceed to check Patient Diagnosis.
3. Check Patient Diagnosis:
  - a. If Diagnosis of Diabetic Retinopathy as Listed in the Denominator equals No, do not include in Eligible Patient Population. Stop Processing.
  - b. If Diagnosis of Diabetic Retinopathy as Listed in the Denominator equals Yes, proceed to check Dilated Macular or Fundus Exam Performed.
4. Check Dilated Macular or Fundus Exam Performed:
  - a. If Dilated Macular or Fundus Exam Performed G8397 or equivalent as Listed in the Denominator equals No, do not include in Eligible Patient Population. Stop Processing.
  - b. If Dilated Macular or Fundus Exam Performed G8397 or equivalent as Listed in the Denominator equals Yes, proceed to check Encounter Performed.
5. Check Encounter Performed:
  - a. If Encounter as Listed in the Denominator equals No, do not include in Eligible Patient Population. Stop Processing.
  - b. If Encounter as Listed in the Denominator equals Yes, include in the Eligible population.
6. Denominator Population:
  - a. Denominator population is all Eligible Patients in the denominator. Denominator is represented as Denominator in the Sample Calculation listed at the end of this document. Letter d equals 8 patients in the sample calculation.
7. Start Numerator
8. Check Dilated Macular or Fundus Exam Findings Communicated to Physician Managing Diabetes Care:
  - a. If Dilated Macular or Fundus Exam Findings Communicated to Physician Managing Diabetes Care equals Yes, include in Reporting Met and Performance Met.

- b. Reporting Met and Performance Met letter is represented in the Reporting Rate and Performance Rate in the Sample Calculation listed at the end of this document. Letter a equals 4 patients in Sample Calculation.
  - c. If Dilated Macular or Fundus Exam Findings Communicated to Physician Managing Diabetes Care equals No, proceed to Documentation of Medical Reason(s) for Not Communicating Dilated Macular or Fundus Exam findings.
- 9. Check Documentation of Medical Reason(s) for Not Communicating Dilated Macular or Fundus Exam findings:
  - a. If Documentation of Medical Reason(s) for Not Communicating Dilated Macular or Fundus Exam findings equals Yes, include in Reporting Met and Performance Exclusion.
  - b. Reporting Met and Performance Exclusion letter is represented in the Reporting Rate and Performance Rate in the Sample Calculation listed at the end of this document. Letter b<sup>1</sup> equals 1 patient in the Sample Calculation.
  - c. If Documentation of Medical Reason(s) for Not Communicating Dilated Macular or Fundus Exam findings equals No, proceed to Documentation of Patient Reason(s) for Not Communicating Dilated Macular or Fundus Exam findings.
- 10. Check Documentation of Patient Reason(s) for Not Communicating Dilated Macular or Fundus Exam findings:
  - a. If Documentation of Patient Reason(s) for Not Communicating Dilated Macular or Fundus Exam findings equals Yes, include in Reporting Met and Performance Exclusion.
  - b. Reporting Met and Performance Exclusion letter is represented in the Reporting Rate in the Sample Calculation listed at the end of this document. Letter b<sup>2</sup> equals 0 patients in the Sample Calculation.
  - c. If Documentation of Patient Reason(s) for Not Communicating Dilated Macular or Fundus Exam findings equals No, proceed to Dilated Macular or Fundus Exam Findings Not Communicated, Reason Not Specified.
- 11. Check Dilated Macular or Fundus Exam Findings Not Communicated, Reason Not Specified:
  - a. If Dilated Macular or Fundus Exam Findings Not Communicated, Reason Not Specified equals Yes, include in Reporting Met and Performance Not Met.
  - b. Reporting Met and Performance Not Met letter is represented in the Reporting Rate in the Sample Calculation listed at the end of this document. Letter c equals 2 patients in the Sample Calculation.
  - c. If Dilated Macular or Fundus Exam Findings Not Communicated, Reason Not Specified equals No, proceed to Reporting Not Met.
- 12. Check Reporting Not Met
  - a. If Reporting Not Met, the Quality Data Code or equivalent was not reported. 1 patient has been subtracted from the reporting numerator in sample calculation.

**SAMPLE CALCULATIONS:**

**Reporting Rate=**

$$\frac{\text{Performance Met (a=4 patients)} + \text{Performance Exclusion (b}^1\text{+b}^2\text{=1 patient)} + \text{Performance Not Met (c=2 patients)}}{\text{Eligible Population / Denominator (d=8 patients)}} = \frac{7 \text{ patients}}{8 \text{ patients}} = 87.50\%$$

**Performance Rate=**

$$\frac{\text{Performance Met (a=4 patients)}}{\text{Reporting Numerator (7 patients) - Performance Exclusion (b}^1\text{+b}^2\text{=1 patient)}} = \frac{4 \text{ patients}}{6 \text{ patients}} = 66.66\%$$