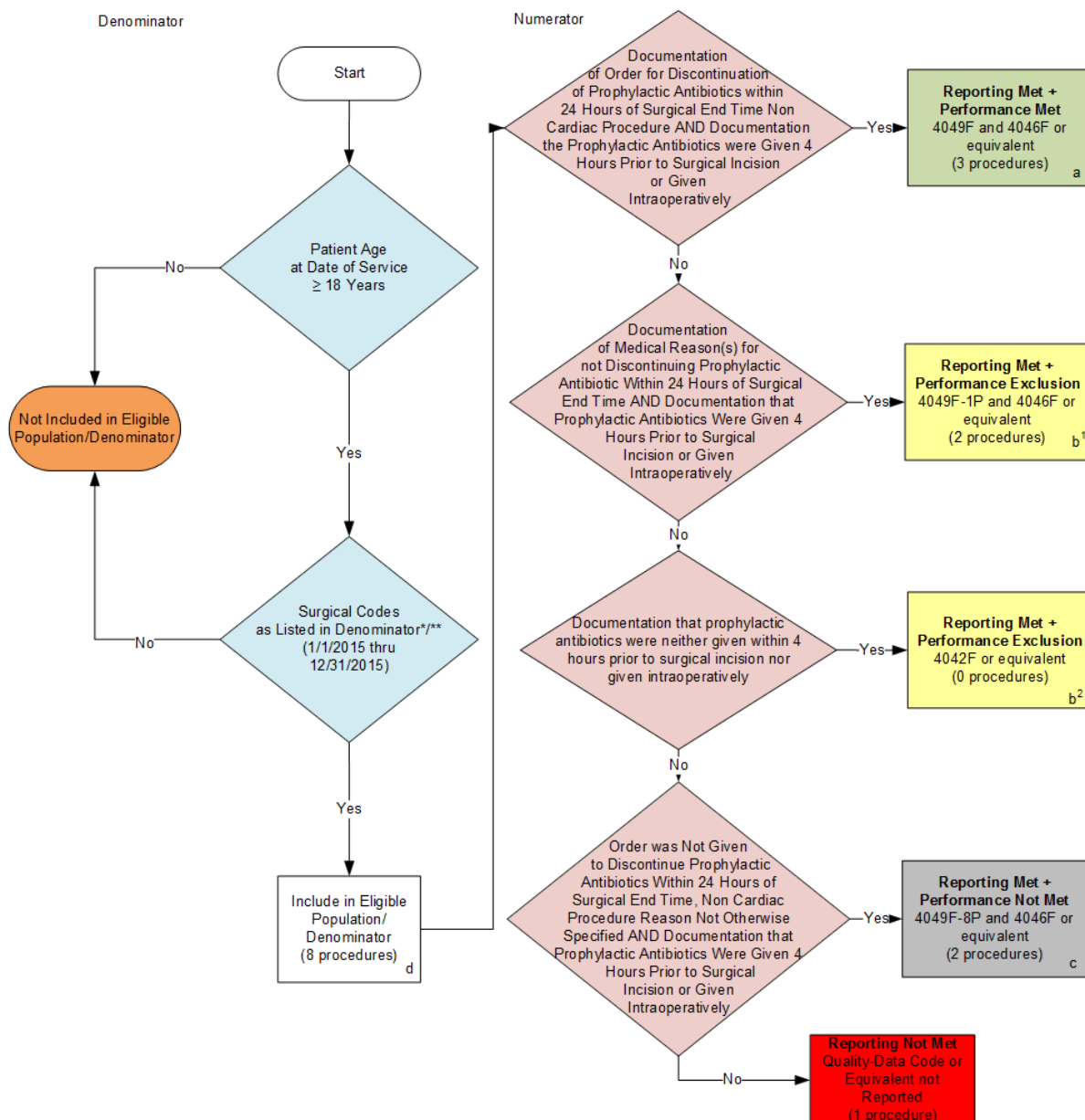


2015 Claims/Registry Individual Measure Flow
PQRS #22 NQF #0271: Perioperative Care: Discontinuation of Prophylactic Antibiotics
(Non-Cardiac Procedures)



SAMPLE CALCULATIONS:

Reporting Rate=

$$\frac{\text{Performance Met (a=3 procedures)} + \text{Performance Exclusion (b}^1\text{+b}^2\text{=2 procedures)} + \text{Performance Not Met (c=2 procedures)}}{\text{Eligible Population / Denominator (d=8 procedures)}} = \frac{7 \text{ procedures}}{8 \text{ procedures}} = 87.50\%$$

Performance Rate=

$$\frac{\text{Performance Met (a=3 procedures)}}{\text{Reporting Numerator (7 procedures) - Performance Exclusion (b}^1\text{+b}^2\text{=2 procedures)}} = \frac{3 \text{ procedures}}{5 \text{ procedures}} = 60.00\%$$

* See the posted Measure Specification for specific coding and instructions to report this measure.

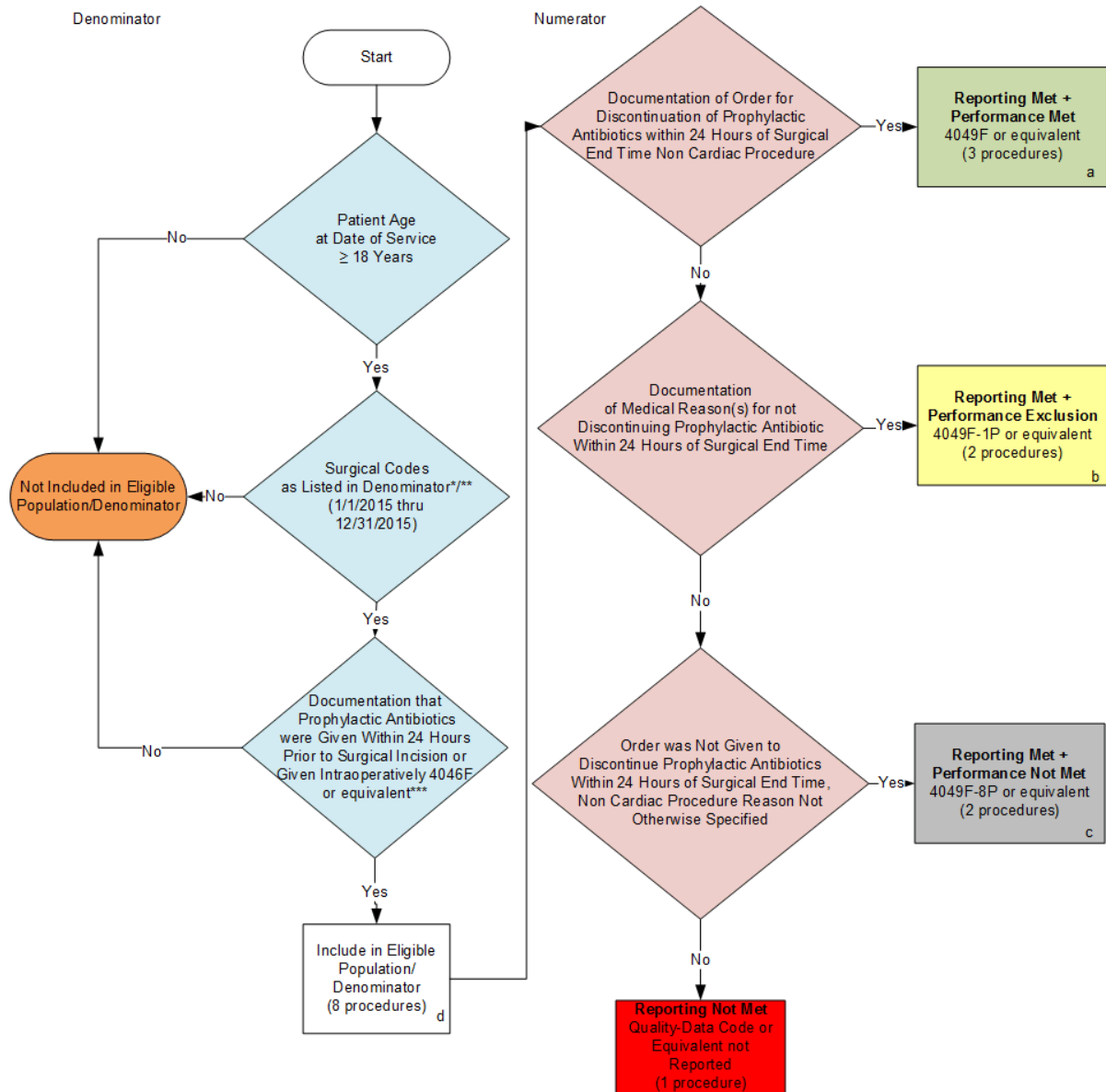
** CPT Category I procedure codes billed by surgeons performing surgery on the same patient, submitted with modifier 62 (indicating two surgeons, i.e., dual procedures) will be included in the denominator population. Both surgeons participating in the Physician Quality Reporting System will be fully accountable for the clinical action described in the measure.

***See the posted Measure Specification for specific instructions to report this measure related to CPT 4046F.

NOTE: Reporting Frequency: Procedure

CPT only copyright 2014 American Medical Association. All rights reserved.

2015 Claims/Registry Individual Measure Flow
PQRS #22 NQF #0271: Perioperative Care: Discontinuation of Prophylactic Antibiotics
(Non-Cardiac Procedures)



SAMPLE CALCULATIONS:

Reporting Rate=

Performance Met (a=3 procedures) + Performance Exclusion (b=2 procedures) + Performance Not Met (c=2 procedures) = 7 procedures = 87.50%
 Eligible Population / Denominator (d=8 procedures) = 8 procedures

Performance Rate=

Performance Met (a=3 procedures) = 3 procedures = 60.00%
 Reporting Numerator (7 procedures) – Performance Exclusion (b=2 procedures) = 5 procedures

* See the posted Measure Specification for specific coding and instructions to report this measure.

** CPT Category I procedure codes billed by surgeons performing surgery on the same patient, submitted with modifier 62 (indicating two surgeons, i.e., dual procedures) will be included in the denominator population. Both surgeons participating in the Physician Quality Reporting System will be fully accountable for the clinical action described in the measure.

***See the posted Measure Specification for specific instructions to report this measure related to CPT 4046F.

NOTE: Reporting Frequency: Procedure

CPT only copyright 2014 American Medical Association. All rights reserved.

2015 Claims Individual Measure Flow
PQRS #22 NQF #0271: Perioperative Care: Discontinuation of Prophylactic
Antibiotics (Non-Cardiac Procedures)

Please refer to the specific section of the Measure Specification to identify the denominator and numerator information for use in reporting this Individual Measure.

1. Start with Denominator
2. Check Patient Age:
 - a. If the Patient Age is greater than or equal to 18 years of age on Date of Service and equals No during the measurement period, do not include in Eligible Patient Population. Stop Processing.
 - b. If Patient Age is greater than or equal to 18 years of age on Date of Service and equals Yes during the measurement period, proceed to check Patient Diagnosis.
3. Check Patient Diagnosis:
 - a. If Diagnosis of Surgical codes as Listed in Denominator equals No, do not include in Eligible Patient Population. Stop Processing.
 - b. If Diagnosis of Surgical codes as Listed in Denominator equals Yes, include in the Eligible population
4. Denominator Population:
 - a. Denominator population is all Eligible Patients in the denominator. Denominator is represented as Denominator in the Sample Calculation listed at the end of this document. Letter d equals 8 procedures in the sample calculation.
5. Start Numerator
6. Check Documentation of Order for Discontinuation of Prophylactic Antibiotics within 24 hours of Surgical End Time Non Cardiac Procedure AND Documentation the Prophylactic Antibiotics were Given 4 hours Prior to Surgical Incision or Given Intraoperatively:
 - a. If Documentation of Order for Discontinuation of Prophylactic Antibiotics within 24 hours of Surgical End Time Non Cardiac Procedure AND Documentation the Prophylactic Antibiotics were Given 4 hours Prior to Surgical Incision or Given Intraoperatively equals Yes, include in Reporting Met and Performance Met.
 - b. Reporting Met and Performance Met letter is represented in the Reporting Rate and Performance Rate in the Sample Calculation listed at the end of this document. Letter a equals 3 procedures in Sample Calculation.
 - c. If Documentation of Order for Discontinuation of Prophylactic Antibiotics within 24 hours of Surgical End Time Non Cardiac Procedure AND Documentation the Prophylactic Antibiotics were Given 4 hours Prior to Surgical Incision or Given Intraoperatively equals No, proceed to Documentation of Medical Reason(s) for not Discontinuing Prophylactic Antibiotic Within 24 Hours of Surgical End Time AND Documentation that Prophylactic Antibiotics were Given 4 Hours Prior to Surgical Incision or Given Intraoperatively.
7. Check Documentation of Medical Reason(s) for not Discontinuing Prophylactic Antibiotic Within 24 Hours of Surgical End Time AND Documentation that Prophylactic Antibiotics were Given 4 Hours Prior to Surgical Incision or Given Intraoperatively:

- a. If Documentation of Medical Reason(s) for not Discontinuing Prophylactic Antibiotic Within 24 Hours of Surgical End Time AND Documentation that Prophylactic Antibiotics were Given 4 Hours Prior to Surgical Incision or Given Intraoperatively equals Yes, include in the Reporting Met and Performance Exclusion.
 - b. Reporting Met and Performance Exclusion letter is represented in the Reporting Rate and Performance Rate in the sample calculation listed at the end of this document. Letter b¹ equals 2 procedures in sample calculations
 - c. If Documentation of Medical Reason(s) for not Discontinuing Prophylactic Antibiotic Within 24 Hours of Surgical End Time AND Documentation that Prophylactic Antibiotics were Given 4 Hours Prior to Surgical Incision or Given Intraoperatively equals No, proceed to Documentation that Prophylactic Antibiotics were Neither Given Within 4 Hours Prior to Surgical Incision Nor Given Intraoperatively.
8. Check Documentation that Prophylactic Antibiotics were Neither Given Within 4 Hours Prior to Surgical Incision Nor Given Intraoperatively:
 - a. If Documentation that Prophylactic Antibiotics were Neither Given Within 4 Hours Prior to Surgical Incision Nor Given Intraoperatively equals Yes, include in the Reporting Met and Performance Exclusion.
 - b. Reporting Met and Performance Exclusion letter is represented in the Reporting Rate and Performance Rate in the sample calculation listed at the end of this document. Letter b² equals 0 procedures in sample calculations
 - c. If Documentation that Prophylactic Antibiotics were Neither Given Within 4 Hours Prior to Surgical Incision Nor Given Intraoperatively equals No, proceed to Order was Not Given to Discontinue Prophylactic Antibiotics within 24 Hours of Surgical End Time, Non Cardiac Procedure Reason Not Otherwise Specified AND Documentation that Prophylactic Antibiotics were Given 4 Hours Prior to Surgical Incision or Given Intraoperatively.
9. Check Order was Not Given to Discontinue Prophylactic Antibiotics within 24 Hours of Surgical End Time, Non Cardiac Procedure Reason Not Otherwise Specified AND Documentation that Prophylactic Antibiotics were Given 4 Hours Prior to Surgical Incision or Given Intraoperatively:
 - a. If Order was Not Given to Discontinue Prophylactic Antibiotics within 24 Hours of Surgical End Time, Non Cardiac Procedure Reason Not Otherwise Specified AND Documentation that Prophylactic Antibiotics were Given 4 Hours Prior to Surgical Incision or Given Intraoperatively equals Yes, include in Reporting Met and Performance Not Met.
 - b. Reporting Met and Performance Not Met letter is represented in the Reporting Rate in the Sample Calculation listed at the end of this document. Letter c equals 2 procedures in Sample Calculation.
 - c. If Order was Not Given to Discontinue Prophylactic Antibiotics within 24 Hours of Surgical End Time, Non Cardiac Procedure Reason Not Otherwise Specified AND Documentation that Prophylactic Antibiotics were Given 4 Hours Prior to Surgical Incision or Given Intraoperatively equals No, proceed to Reporting Not Met
10. Check Reporting Not Met
 - a. If Reporting Not Met equals No, Quality Data Code or equivalent not reported. 1 procedure has been subtracted from reporting numerator in the sample calculation.

SAMPLE CALCULATIONS:

Reporting Rate=

$$\frac{\text{Performance Met (a=3 procedures)} + \text{Performance Exclusion (b}^1\text{+b}^2\text{=2 procedures)} + \text{Performance Not Met (c=2 procedures)}}{\text{Eligible Population / Denominator (d=8 procedures)}} = \frac{7 \text{ procedures}}{8 \text{ procedures}} = 87.50\%$$

Performance Rate=

$$\frac{\text{Performance Met (a=3 procedures)}}{\text{Reporting Numerator (7 procedures) - Performance Exclusion (b}^1\text{+b}^2\text{=2 procedures)}} = \frac{3 \text{ procedures}}{5 \text{ procedures}} = 60.00\%$$

2015 Registry Individual Measure Flow
PQRS #22 NQF #0271: Perioperative Care: Discontinuation of Prophylactic
Antibiotics (Non-Cardiac Procedures)

Please refer to the specific section of the Measure Specification to identify the denominator and numerator information for use in reporting this Individual Measure.

1. Start with Denominator
2. Check Patient Age:
 - a. If the Patient Age is greater than or equal to 18 years of age on Date of Service and equals No during the measurement period, do not include in Eligible Patient Population. Stop Processing.
 - b. If Patient Age is greater than or equal to 18 years of age on Date of Service and equals Yes during the measurement period, proceed to check Surgical Codes as Listed in Denominator.
3. Check Surgical Codes as Listed in Denominator:
 - a. If Surgical Codes as Listed in Denominator equals No, do not include in Eligible Patient Population. Stop Processing.
 - b. If Surgical Codes as Listed in Denominator equals Yes, proceed to Documentation that Prophylactic Antibiotics were Given Within 24 Hours Prior to Surgical Incision or Given Intraoperatively 4046F or equivalent.
4. Check Documentation that Prophylactic Antibiotics were Given Within 24 Hours Prior to Surgical Incision or Given Intraoperatively 4046F or equivalent:
 - a. If Documentation that Prophylactic Antibiotics were Given Within 24 Hours Prior to Surgical Incision or Given Intraoperatively 4046F or equivalent equals No, do not include in Eligible Patient Population. Stop Processing.
 - b. If Documentation that Prophylactic Antibiotics were Given Within 24 Hours Prior to Surgical Incision or Given Intraoperatively 4046F or equivalent equals Yes, include in the Eligible population.
5. Denominator Population:
 - a. Denominator population is all Eligible Patients in the denominator. Denominator is represented as Denominator in the Sample Calculation listed at the end of this document. Letter d equals 8 procedures in the sample calculation.
6. Start Numerator
7. Check Documentation of Order for Discontinuation of Prophylactic Antibiotics within 24 Hours of Surgical End Time Non Cardiac Procedure:
 - a. If Documentation of Order for Discontinuation of Prophylactic Antibiotics within 24 Hours of Surgical End Time Non Cardiac Procedure equals Yes, include in Reporting Met and Performance Met.
 - b. Reporting Met and Performance Met letter is represented in the Reporting Rate and Performance Rate in the Sample Calculation listed at the end of this document. Letter a equals 3 procedures in Sample Calculation.

If Documentation of Order for Discontinuation of Prophylactic Antibiotics within 24 Hours of Surgical End Time Non Cardiac Procedure equals No, proceed to Documentation of Medical Reason(s) for Not Discontinuing Prophylactic Antibiotic Within 24 Hours of Surgical End Time.

8. Check Documentation of Medical Reason(s) for Not Discontinuing Prophylactic Antibiotic Within 24 Hours of Surgical End Time:
 - a. If Documentation of Medical Reason(s) for Not Discontinuing Prophylactic Antibiotic Within 24 Hours of Surgical End Time equals Yes, include in the Reporting Met and Performance Exclusion.
 - b. Reporting Met and Performance Exclusion letter is represented in the Reporting Rate and Performance Rate in the sample calculation listed at the end of this document. Letter b equals 2 procedures in sample calculations
If Documentation of Medical Reason(s) for not Discontinuing Prophylactic Antibiotic Within 24 Hours of Surgical End Time equals No, proceed to Order was Not Given to Discontinue Prophylactic Antibiotics within 24 Hours of Surgical End Time, Non Cardiac Procedure Reason Not Otherwise Specified.
9. Check Order was Not Given to Discontinue Prophylactic Antibiotics within 24 Hours of Surgical End Time, Non Cardiac Procedure Reason Not Otherwise Specified:
 - a. If Order was Not Given to Discontinue Prophylactic Antibiotics within 24 Hours of Surgical End Time, Non Cardiac Procedure Reason Not Otherwise Specified equals Yes, include in Reporting Met and Performance Not Met.
 - b. Reporting Met and Performance Not Met letter is represented in the Reporting Rate in the Sample Calculation listed at the end of this document. Letter c equals 2 procedures in Sample Calculation.
 - c. If Order was Not Given to Discontinue Prophylactic Antibiotics within 24 Hours of Surgical End Time, Non Cardiac Procedure Reason Not Otherwise Specified equals No, proceed to Reporting Not Met
10. Check Reporting Not Met
 - a. If Reporting Not Met equals No, Quality Data Code or equivalent not reported. 1 procedure has been subtracted from reporting numerator in the sample calculation.

SAMPLE CALCULATIONS:

Reporting Rate=

$$\frac{\text{Performance Met (a=3 procedures)} + \text{Performance Exclusion (b=2 procedures)} + \text{Performance Not Met (c=2 procedures)}}{\text{Eligible Population / Denominator (d=8 procedures)}} = \frac{7 \text{ procedures}}{8 \text{ procedures}} = 87.50\%$$

Performance Rate=

$$\frac{\text{Performance Met (a=3 procedures)}}{\text{Reporting Numerator (7 procedures) - Performance Exclusion (b=2 procedures)}} = \frac{3 \text{ procedures}}{5 \text{ procedures}} = 60.00\%$$