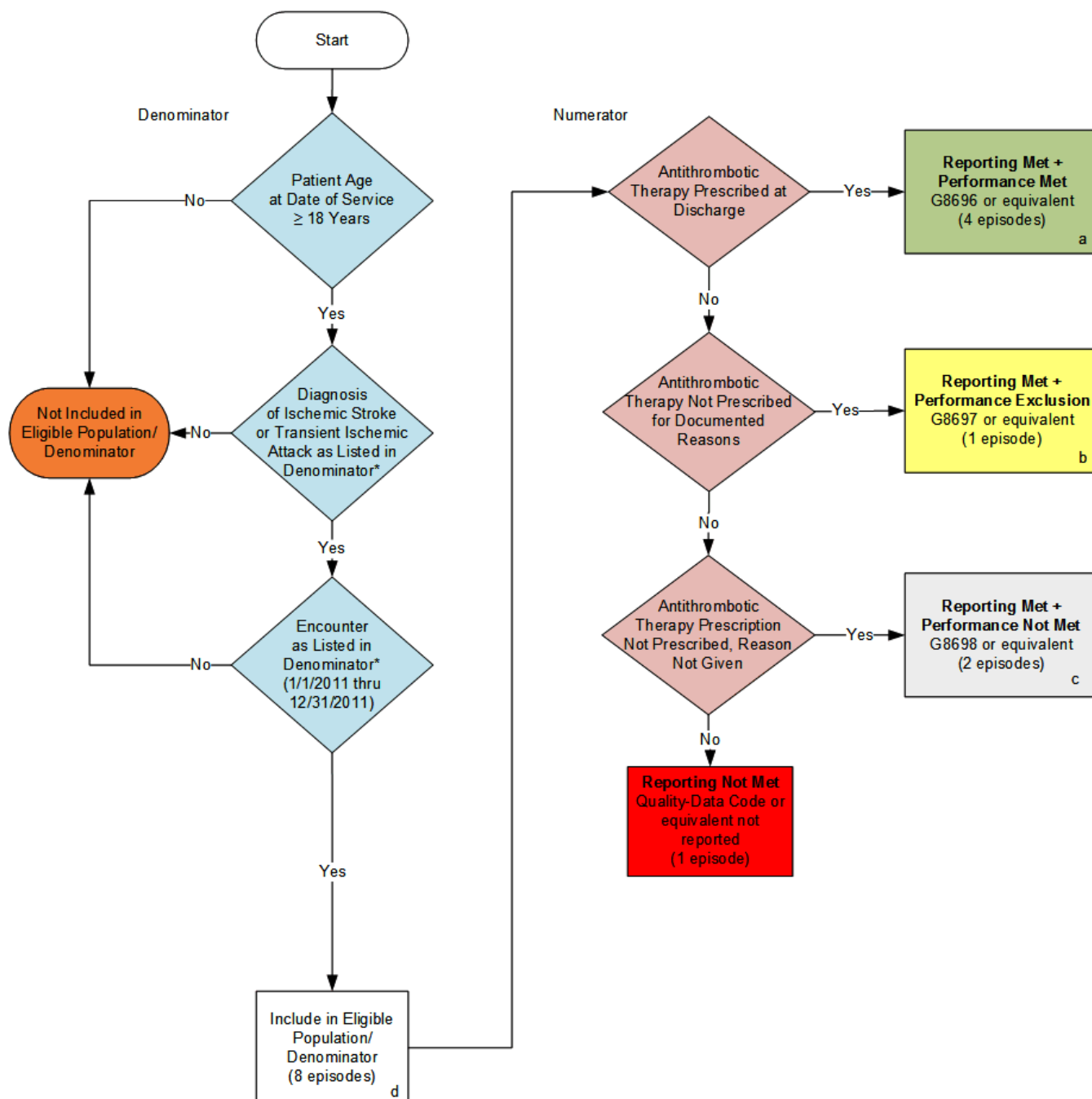


2015 Claims/Registry Individual Measure Flow
PQRS #32 NQF #0325: Stroke and Stroke Rehabilitation: Discharged on Antithrombotic Therapy



SAMPLE CALCULATIONS:

Reporting Rate=

$$\frac{\text{Performance Met (a=4 episodes)} + \text{Performance Exclusion (b=1 episode)} + \text{Performance Not Met (c=2 episodes)}}{\text{Eligible Population / Denominator (d=8 episodes)}} = \frac{7 \text{ episodes}}{8 \text{ episodes}} = 87.50\%$$

Performance Rate=

$$\frac{\text{Performance Met (a=4 episodes)}}{\text{Reporting Numerator (7 episodes) - Performance Exclusion (b=1 episode)}} = \frac{4 \text{ episodes}}{6 \text{ episodes}} = 66.67\%$$

*See the posted Measure Specification for specific coding and instructions to report this measure.
 NOTE: Report Frequency- Episode

2015 Claims/Registry Individual Measure Flow
PQRS #32 NQF #0325: Stroke and Stroke Rehabilitation: Discharged on
Antithrombotic Therapy

Please refer to the specific section of the Measure Specification to identify the denominator and numerator information for use in reporting this Individual Measure.

1. Start with Denominator
2. Check Patient Age:
 - a. If the Age is greater than or equal to 18 years of age at Date of Service and equals No during the measurement period, do not include in Eligible Patient Population. Stop Processing.
 - b. If the Age is greater than or equal to 18 years of age at Date of Service and equals Yes during the measurement period, proceed to check Patient Diagnosis.
3. Check Patient Diagnosis:
 - a. If Diagnosis of Ischemic Stroke or Transient Ischemic Attack as Listed in the Denominator equals No, do not include in Eligible Patient Population. Stop Processing.
 - b. If Diagnosis of Ischemic Stroke or Transient Ischemic Attack as Listed in the Denominator equals Yes, proceed to check Encounter Performed.
4. Check Encounter Performed:
 - a. If Encounter as Listed in the Denominator equals No, do not include in Eligible Patient Population. Stop Processing.
 - b. If Encounter as Listed in the Denominator equals Yes, include in the Eligible Population.
5. Denominator Population:
 - a. Denominator population is all Eligible Patients in the denominator. Denominator is represented as Denominator in the Sample Calculation listed at the end of this document. Letter d equals 8 episodes in the sample calculation.
6. Start Numerator
7. Check Antithrombotic Therapy Prescribed at Discharge:
 - a. If Antithrombotic Therapy Prescribed at Discharge equals Yes, include in Reporting Met and Performance Met.
 - b. Reporting Met and Performance Met letter is represented in the Reporting Rate and Performance Rate in the Sample Calculation listed at the end of this document. Letter a equals 4 episodes in Sample Calculation.
 - c. If Antithrombotic Therapy Prescribed at Discharge equals No, proceed to Antithrombotic Therapy Not Prescribed for Documented Reasons.
8. Check Antithrombotic Therapy Not Prescribed for Documented Reasons:
 - a. If Antithrombotic Therapy Not Prescribed for Documented Reasons equals Yes, include in Reporting Met and Performance Exclusion.
 - b. Reporting Met and Performance Exclusion letter is represented in the Reporting Rate and Performance Rate in the Sample Calculation listed at the end of this document. Letter b equals 1 episode in the Sample Calculation.

- c. If Antithrombotic Therapy Not Prescribed for Documented Reasons equals No, proceed to Antithrombotic Therapy Prescription Not Prescribed, Reason not Given.
9. Check Antithrombotic Therapy Prescription Not Prescribed, Reason Not Given:
 - a. If Antithrombotic Therapy Prescription not Prescribed, Reason not Given equals Yes, include in Reporting Met and Performance Not Met.
 - b. Reporting Met and Performance Not Met letter is represented in the Reporting Rate and Performance Rate in the Sample Calculation listed at the end of this document. Letter c equals 2 episodes in the Sample Calculation.
 - c. If Antithrombotic Therapy Prescription Not Prescribed, Reason Not Given equals No, proceed to Reporting Not Met.
10. Check Reporting Not Met:
 - a. If Reporting Not Met equals No, Quality Data Code or equivalent not reported. 1 episode has been subtracted from the reporting numerator in the sample calculation.

SAMPLE CALCULATIONS:

Reporting Rate=

$$\frac{\text{Performance MeT (a=4 episodes) + Performance Exclusion (b=1 episode) + Performance Not Met (c=2 episodes)}}{\text{Eligible Population / Denominator (d=8 episodes)}} = \frac{7 \text{ episodes}}{8 \text{ episodes}} = 87.50\%$$

Performance Rate=

Performance MeT (a=4 episodes) =	4 episodes = 66.67%
Reporting Numerator (7 episodes) – Performance Exclusion (b=1 episode) =	6 episodes