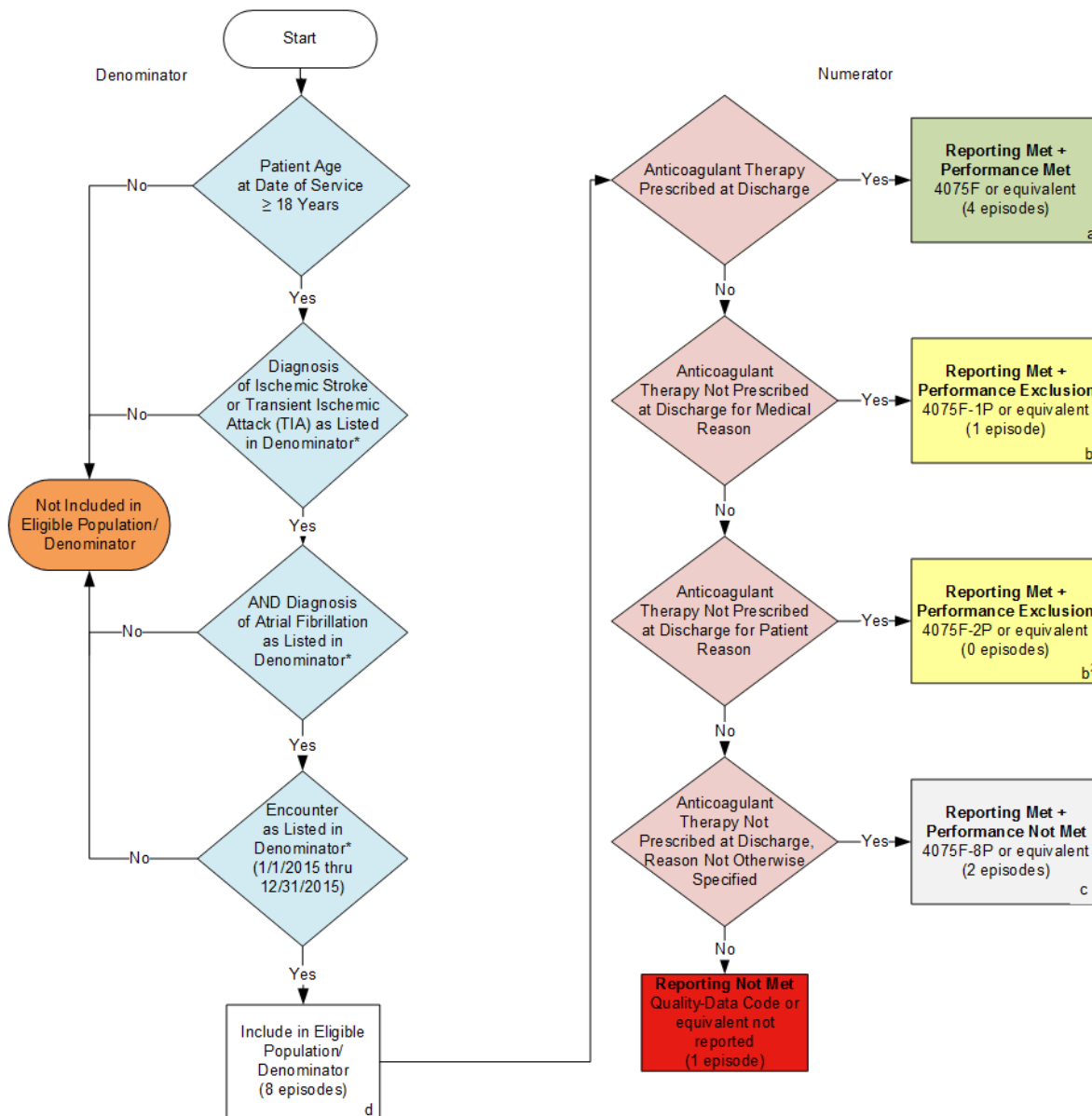


2015 Registry Individual Measure Flow
PQRS #33 NQF #0241: Stroke and Stroke Rehabilitation:
Anticoagulant Therapy Prescribed for Atrial Fibrillation (AF) at Discharge



SAMPLE CALCULATIONS:

Reporting Rate=

$$\frac{\text{Performance Met (a=4 episodes)} + \text{Performance Exclusion (b}^1\text{+b}^2\text{=1 episode)} + \text{Performance Not Met (c=2 episodes)}}{\text{Eligible Population / Denominator (d=8 episodes)}} = \frac{7 \text{ episodes}}{8 \text{ episodes}} = 87.50\%$$

Performance Rate=

$$\frac{\text{Performance Met (a=4 episodes)}}{\text{Reporting Numerator (7 episodes) - Performance Exclusion (b}^1\text{+b}^2\text{=1 episode)}} = \frac{4 \text{ episodes}}{6 \text{ episodes}} = 66.67\%$$

*See the posted Measure Specification for specific coding and instructions to report this measure.

NOTE: Reporting Frequency- Episode

CPT only copyright 2014 American Medical Association. All rights reserved.

2015 Registry Individual Measure Flow
PQRS #33 NQF #0241: Stroke and Stroke Rehabilitation:
Anticoagulant Therapy Prescribed for Atrial Fibrillation (AF) at Discharge

Please refer to the specific section of the Measure Specification to identify the denominator and numerator information for use in reporting this Individual Measure.

1. Start with Denominator
2. Check Patient Age:
 - a. If the Age is greater than or equal to 18 years of age on Date of Service equals No during the measurement period, do not include in Eligible Patient Population. Stop Processing.
 - b. If the Age is greater than or equal to 18 years of age on Date of Service equals Yes during the measurement period, proceed to check Patient Diagnosis.
3. Check Patient Diagnosis:
 - a. If Diagnosis of Ischemic Stroke or Transient Ischemic Attack (TTA) as Listed in the Denominator equals No, do not include in Eligible Patient Population. Stop Processing.
 - b. If Diagnosis of Ischemic Stroke or Transient Ischemic Attack (TTA) as Listed in the Denominator equals Yes, proceed to check patient diagnosis.
4. Check Patient Diagnosis:
 - a. If Diagnosis of Atrial Fibrillation as Listed in the Denominator equals No, do not include in Eligible Patient Population. Stop Processing.
 - b. If Diagnosis of Atrial Fibrillation as Listed in the Denominator equals Yes, proceed to Encounter Performed.
5. Check Encounter Performed:
 - a. If Encounter as Listed in the Denominator equals No, do not include in Eligible Patient Population. Stop Processing.
 - b. If Encounter as Listed in the Denominator equals Yes, proceed to check Eligible Population.
6. Denominator Population:
 - a. Denominator population is all Eligible Patients in the denominator. Denominator is represented as Denominator in the Sample Calculation listed at the end of this document. Letter d equals 8 episodes in the sample calculation.
7. Start Numerator
8. Check Anticoagulant Therapy Prescribed at Discharge:
 - a. If Anticoagulant Therapy Prescribed at Discharge equals Yes, include in Reporting Met and Performance Met.
 - b. Reporting Met and Performance Met letter is represented in the Reporting Rate and Performance Rate in the Sample Calculation listed at the end of this document. Letter a equals 4 episodes in Sample Calculation.
 - c. If Anticoagulant Therapy Prescribed at Discharge equals No, proceed to Anticoagulant Therapy Not Prescribed at Discharge for Medical Reasons.

9. Check Anticoagulant Therapy Not Prescribed at Discharge for Medical Reasons:
 - a. If Anticoagulant Therapy Not Prescribed at Discharge for Medical Reasons equals Yes, include in Reporting Met and Performance Exclusion.
 - b. Reporting Met and Performance Exclusion letter is represented in the Reporting Rate and Performance Exclusion in the Sample Calculation listed at the end of this document. Letter b¹ equals 1 episode in the Sample Calculation.
 - c. If Anticoagulant Therapy Not Prescribed at Discharge for Medical Reasons equals No, proceed to Anticoagulant Therapy Not Prescribed at Discharge for Patient Reasons.
10. Check Anticoagulant Therapy Not Prescribed at Discharge for Patient Reason:
 - a. If Anticoagulant Therapy Not Prescribed at Discharge for Patient Reason equals Yes, include in Reporting Met and Performance Exclusion.
 - b. Reporting Met and Performance Exclusion letter is represented in the Reporting Rate and Performance Rate in the Sample Calculation listed at the end of this document. Letter b² equals 0 episodes in the Sample Calculation.

If Anticoagulant Therapy Not Prescribed at Discharge for Patient Reasons equals No, proceed to Anticoagulant Therapy Not Prescribed at Discharge Reason Not Otherwise Specified.
11. Check Anticoagulant Therapy Not Prescribed at Discharge Reason Not Otherwise Specified:
 - a. If Anticoagulant Therapy Not Prescribed at Discharge Reason Not Otherwise Specified equals Yes, include in the Reporting Met and Performance Not Met.
 - b. Reporting Met and Performance Not Met letter is represented in the Reporting Rate in the Sample Calculation listed at the end of this document. Letter c equals 2 episodes in the Sample Calculation.
 - c. If Anticoagulant Therapy Not Prescribed at Discharge Reason Not Otherwise Specified equals No, proceed to Reporting Not Met.
12. Check Reporting Not Met
 - a. If Reporting Not Met equals No, Quality Data Code or equivalent not reported. 1 episode has been subtracted from reporting numerator in the sample calculation.

SAMPLE CALCULATIONS:

Reporting Rate=

$$\frac{\text{Performance MeT (a=4 episodes) + Performance Exclusion (b^1+b^2=1 episode) + Performance Not Met (c=2 episodes)}}{\text{Eligible Population / Denominator (d=8 episodes)}} = \frac{7 \text{ episodes}}{8 \text{ episodes}} = 87.50\%$$

Performance Rate=

$$\frac{\text{Performance MeT (a=4 episodes)}}{\text{Reporting Numerator (7 episodes) - Performance Exclusion (b^1+b^2=1 episode)}} = \frac{4 \text{ episodes}}{6 \text{ episodes}} = 66.67\%$$