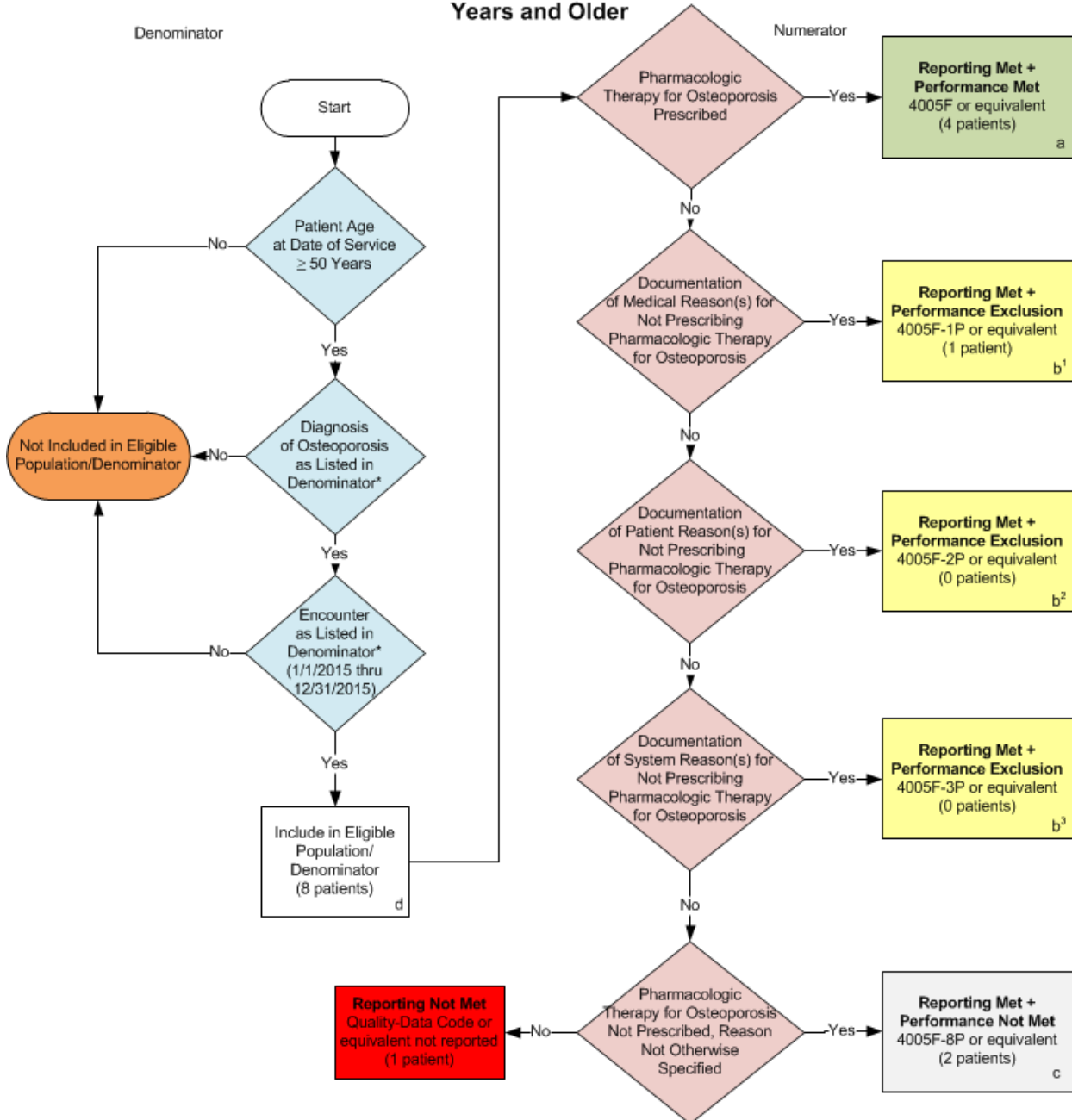


2015 Claims/Registry Individual Measure Flow
PQRS #41 NQF #0049: Osteoporosis: Pharmacologic Therapy for Men and Women Aged 50 Years and Older



SAMPLE CALCULATIONS:

Reporting Rate=

Performance Met (a=4 patients) + Performance Exclusion (b¹+b²+b³=1 patient) + Performance Not Met (c=2 patients) = 7 patients = 87.50%
 Eligible Population / Denominator (d=8 patients) = 8 patients

Performance Rate=

Performance Met (a=4 patients) = 4 patients = 66.67%
 Reporting Numerator (7 patients) – Performance Exclusion (b¹+b²+b³=1 patient) = 6 patients

*See the posted Measure Specification for specific coding and instructions to report this measure.

NOTE: Reporting Frequency – Patient-process

CPT only copyright 2014 American Medical Association. All rights reserved.

v1

2015 Claims/Registry Individual Measure Flow
PQRS #41 NQF #0049: Osteoporosis: Pharmacologic Therapy for Men and
Women aged 50 Years and Older

Please refer to the specific section of the Measure Specification to identify the denominator and numerator information for use in reporting this Individual Measure.

1. Start with Denominator
2. Check Patient Age:
 - a. If the Age is greater than or equal to 50 years of age on Date of Service and equals No during the measurement period, do not include in Eligible Patient Population. Stop Processing.
 - b. If the Age is greater than or equal to 50 years of age on Date of Service and equals Yes during the measurement period, proceed to check Patient Diagnosis.
3. Check Patient Diagnosis:
 - a. If Diagnosis of Osteoporosis as Listed in the Denominator equals No, do not include in Eligible Patient Population. Stop Processing.
 - b. If Diagnosis of Osteoporosis as Listed in the Denominator equals Yes, proceed to check Encounter Performed.
4. Check Encounter Performed:
 - a. If Encounter as listed in the Denominator equals No, do not include in Eligible Patient Population. Stop Processing.
 - b. If Encounter as Listed in the Denominator equals Yes, include in the Eligible population.
5. Denominator Population:
 - a. Denominator population is all Eligible Patients in the denominator. Denominator is represented as Denominator in the Sample Calculation listed at the end of this document. Letter d equals 8 patients in the sample calculation.
6. Start Numerator
7. Check Pharmacologic Therapy for Osteoporosis Prescribed:
 - a. If Pharmacologic Therapy for Osteoporosis Prescribed equals Yes, include in Reporting Met and Performance Met.
 - b. Reporting Met and Performance Met letter is represented in the Reporting Rate and Performance Rate in the Sample Calculation listed at the end of this document. Letter a equals 4 patients in Sample Calculation.
 - c. If Pharmacologic Therapy for Osteoporosis Prescribed equals No, proceed to Documentation of Medical Reason(s) for Not Prescribing Pharmacologic Therapy for Osteoporosis.

8. Check Documentation of Medical Reason(s) for Not Prescribing Pharmacologic Therapy for Osteoporosis:
 - a. If Documentation of Medical Reason(s) for Not Prescribing Pharmacologic Therapy for Osteoporosis equals Yes, include in Reporting Met and Performance Exclusion.
 - b. Reporting Met and Performance Exclusion letter is represented in the Reporting Rate and Performance Rate in the Sample Calculation listed at the end of this document. Letter b¹ equals 1 patient in the Sample Calculation.
 - c. If Documentation of Medical Reason(s) for Not Prescribing Pharmacologic Therapy for Osteoporosis equals No, proceed to Documentation of Patient Reason(s) for Not Prescribing Pharmacologic Therapy for Osteoporosis.
9. Check Documentation of Patient Reason(s) for Not Prescribing Pharmacologic Therapy for Osteoporosis:
 - a. If Documentation of Patient Reason(s) for Not Prescribing Pharmacologic Therapy for Osteoporosis equals Yes, include in Reporting Met and Performance Exclusion.
 - b. Reporting Met and Performance Exclusion letter is represented in the Reporting Rate and Performance Rate in the Sample Calculation listed at the end of this document. Letter b² equals 0 patients in the Sample Calculation.
 - c. If Documentation of Patient Reason(s) for Not Prescribing Pharmacologic Therapy for Osteoporosis equals No, proceed to Documentation of System Reason(s) for Not Prescribing Pharmacologic Therapy for Osteoporosis.
10. Check Documentation of System Reason(s) for Not Prescribing Pharmacologic Therapy for Osteoporosis:
 - a. If Documentation of System Reason(s) for Not Prescribing Pharmacologic Therapy for Osteoporosis equals Yes, include in Reporting Met and Performance Exclusion.
 - b. Reporting Met and Performance Exclusion letter is represented in the Reporting Rate and Performance Rate in the Sample Calculation listed at the end of this document. Letter b³ equals 0 patients in the Sample Calculation.
 - c. If Documentation of System Reason(s) for Not Prescribing Pharmacologic Therapy for Osteoporosis equals No, proceed to Pharmacologic Therapy Not for Osteoporosis Not Prescribed and Reason Not Otherwise Specified.
11. Check Pharmacologic Therapy Not for Osteoporosis Not Prescribed and Reason Not Otherwise Specified:
 - a. If Pharmacologic Therapy Not for Osteoporosis Not Prescribed and Reason Not Otherwise Specified equals Yes, include in Reporting Met and Performance Not Met.
 - b. Reporting Met and Performance Not Met letter is represented in the Reporting Rate in the Sample Calculation listed at the end of this document. Letter c equals 2 patients in the Sample Calculation.
 - c. If Pharmacologic Therapy Not for Osteoporosis Not Prescribed and Reason Not Otherwise Specified equals No, proceed to Reporting Not Met.
12. Check Reporting Not Met
 - a. If Reporting Not Met equals No, Quality Data Code or equivalent not reported. 1 patient has been subtracted from the reporting numerator in sample calculation.

SAMPLE CALCULATIONS:

Reporting Rate=

$$\frac{\text{Performance Met (a=4 patients)} + \text{Perf. Exclusion (b}^1+\text{b}^2+\text{b}^3=1 \text{ patients)} + \text{Performance Not Met (c=2 patients)}}{\text{Eligible Population / Denominator (d =8 patients)}} = \frac{7 \text{ patients}}{8 \text{ patients}} = 87.50\%$$

Performance Rate=

$$\frac{\text{Performance Met (a}^2=4 \text{ patients)}}{\text{Reporting Numerator (7 patients) – Performance Exclusion (b}^1+\text{b}^2+\text{b}^3= 1 \text{ patients)}} = \frac{4 \text{ patients}}{6 \text{ patients}} = 66.67\%$$