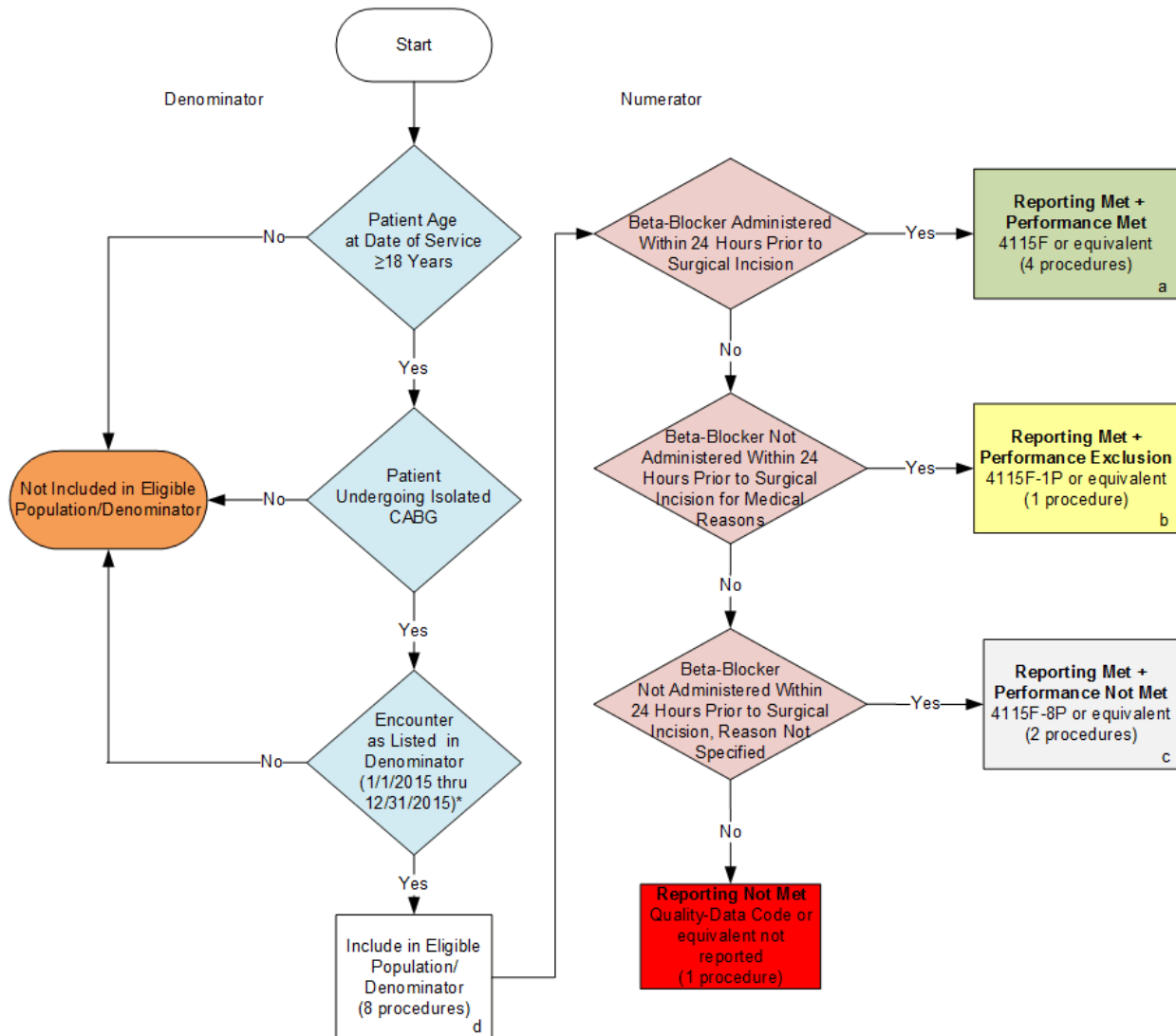


2015 Claims/Registry Individual Measure Flow
Measure #44 NQF #0236: Coronary Artery Bypass Graft (CABG):
Preoperative Beta-Blocker in Patients with Isolated CABG Surgery



SAMPLE CALCULATIONS:

Reporting Rate=

$$\frac{\text{Performance Met (a=4 procedures)} + \text{Performance Exclusion (b=1 procedure)} + \text{Performance Not Met (c=2 procedures)}}{\text{Eligible Population / Denominator (d=8 procedures)}} = \frac{7 \text{ procedures}}{8 \text{ procedures}} = 87.50\%$$

Performance Rate=

$$\frac{\text{Performance Met (a=4 procedures)}}{\text{Reporting Numerator (7 procedures) - Performance Exclusion (b=1 procedure)}} = \frac{4 \text{ procedures}}{6 \text{ procedures}} = 66.67\%$$

*See the posted Measure Specification for specific coding and instructions to report this measure.
 NOTE: Reporting Frequency- Procedure

CPT only copyright 2014 American Medical Association. All rights reserved.

2015 Claims/Registry Individual Measure Flow
PQRS #44 NQF #0236: Coronary Artery Bypass Graft (CABG): Preoperative Beta-Blocker in Patients with Isolated CABG Surgery

Please refer to the specific section of the Measure Specification to identify the denominator and numerator information for use in reporting this Individual Measure.

1. Start with Denominator
2. Check Patient Age:
 - a. If Age greater than or equal to 18 years of age on Date of Service equals No during the measurement period, do not include in Eligible Patient Population. Stop Processing.
 - b. If Age greater than or equal to 18 years of age on Date of Service equals Yes during the measurement period, proceed to check Patient Undergoing Isolated CABG.
3. Check Patient Undergoing Isolated CABG:
 - a. If patient undergoing isolated CABG equals No, do not include in Eligible Patient Population. Stop Processing.
 - b. If patient undergoing isolated CABG equals Yes, proceed to check Encounter Performed.
4. Check Encounter Performed:
 - a. If Encounter as Listed in the Denominator equals No, do not include in Eligible Patient Population. Stop Processing.
 - b. If Encounter as Listed in the Denominator equals Yes, include in the Eligible population.
5. Denominator Population:
 - a. Denominator population is all Eligible Patients in the denominator. Denominator is represented as Denominator in the Sample Calculation listed at the end of this document. Letter d equals 8 procedures in the sample calculation.
6. Start Numerator
7. Check Beta-Blocker Administered Within 24 Hours Prior to Surgical Incision:
 - a. If Beta-Blocker Administered Within 24 Hours Prior to Surgical Incision equals Yes, include in Reporting Met and Performance Met.
 - b. Reporting Met and Performance Met letter is represented in the Reporting Rate and Performance Rate in the Sample Calculation listed at the end of this document. Letter a equals 4 procedures in Sample Calculation.
 - c. If Beta-Blocker Administered Within 24 Hours Prior to Surgical Incision equals No, proceed to Beta-Blocker Not Administered Within 24 Hours Prior to Surgical Incision for Medical Reasons.
8. Check Beta-Blocker Not Administered Within 24 Hours Prior to Surgical Incision for Medical Reasons:

- a. If Beta-Blocker Not Administered Within 24 Hours Prior to Surgical Incision for Medical Reasons equals Yes, include in Reporting Met and Performance Exclusion.
 - b. Reporting Met and Performance Exclusion is represented in the Reporting Rate in the Sample Calculation listed at the end of this document. Letter b equals 1 procedure in the Sample Calculation.
 - c. If Beta-Blocker Not Administered Within 24 Hours Prior to Surgical Incision for Medical Reasons equals No, proceed to Beta-Blocker Not Administered Within 24 Hours Prior to Surgical Incision, Reason Not Specified.
9. Check Beta-Blocker Not Administered Within 24 Hours Prior to Surgical Incision, Reason Not Specified:
 - a. If Beta-Blocker Not Administered Within 24 Hours Prior to Surgical Incision, Reason Not Specified equals Yes, include in the Reporting Met and Performance Not Met.
 - b. Reporting Met and Performance Not Met letter is represented in the Reporting Rate in the Sample Calculation listed at the end of this document. Letter c equals 2 procedures in the Sample Calculation.
 - c. If Beta-Blocker Not Administered Within 24 Hours Prior to Surgical Incision, Reason Not Specified equals No, proceed to Reporting Not Met.
10. Check Reporting Not Met:
 - a. If Reporting Not Met equals No, Quality Data Code or equivalent not reported. 1 procedure has been subtracted from the reporting numerator in the sample calculation.

SAMPLE CALCULATIONS:

Reporting Rate=

$$\frac{\text{Performance MeT (a=4 procedures) + Performance Exclusion (b=1 procedure) + Performance Not Met (c=2 procedures)}}{\text{Eligible Population / Denominator (d=8 procedures)}} = \frac{7 \text{ procedures}}{8 \text{ episodes}} = 87.50\%$$

Performance Rate=

$$\frac{\text{Performance MeT (a=4 procedures)}}{\text{Reporting Numerator (7 procedures) - Performance Exclusion (b=1 procedure)}} = \frac{4 \text{ procedures}}{6 \text{ procedures}} = 66.67\%$$