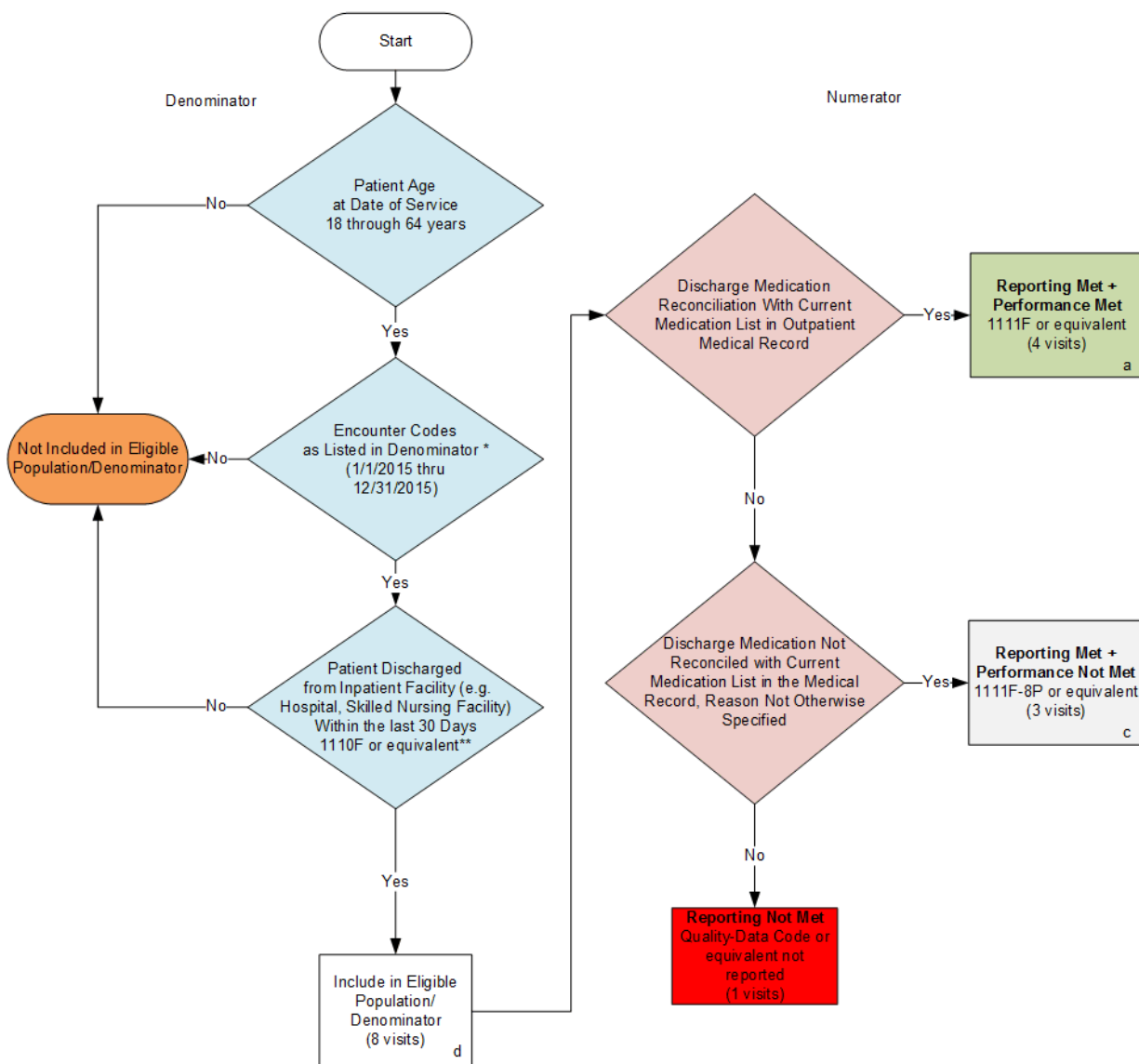


2015 Claims/Registry Individual Measure Flow PQRS #46 NQF #0097: Medication Reconciliation

This measure will be calculated with 2 Performance Rates
Reporting Criteria Option 1



SAMPLE CALCULATIONS:

Reporting Rate=

$$\frac{\text{Performance Met (a=4 visits)} + \text{Performance Not Met (c=3 visits)}}{\text{Eligible Population / Denominator (d=8 visits)}} = \frac{7 \text{ visits}}{8 \text{ visits}} = 87.50\%$$

Performance Rate=

$$\frac{\text{Performance Met (a=4 visits)}}{\text{Reporting Numerator (7 visits)}} = \frac{4 \text{ visits}}{7 \text{ visits}} = 57.14\%$$

* See the posted Measure Specification for specific coding and instructions to report this measure.

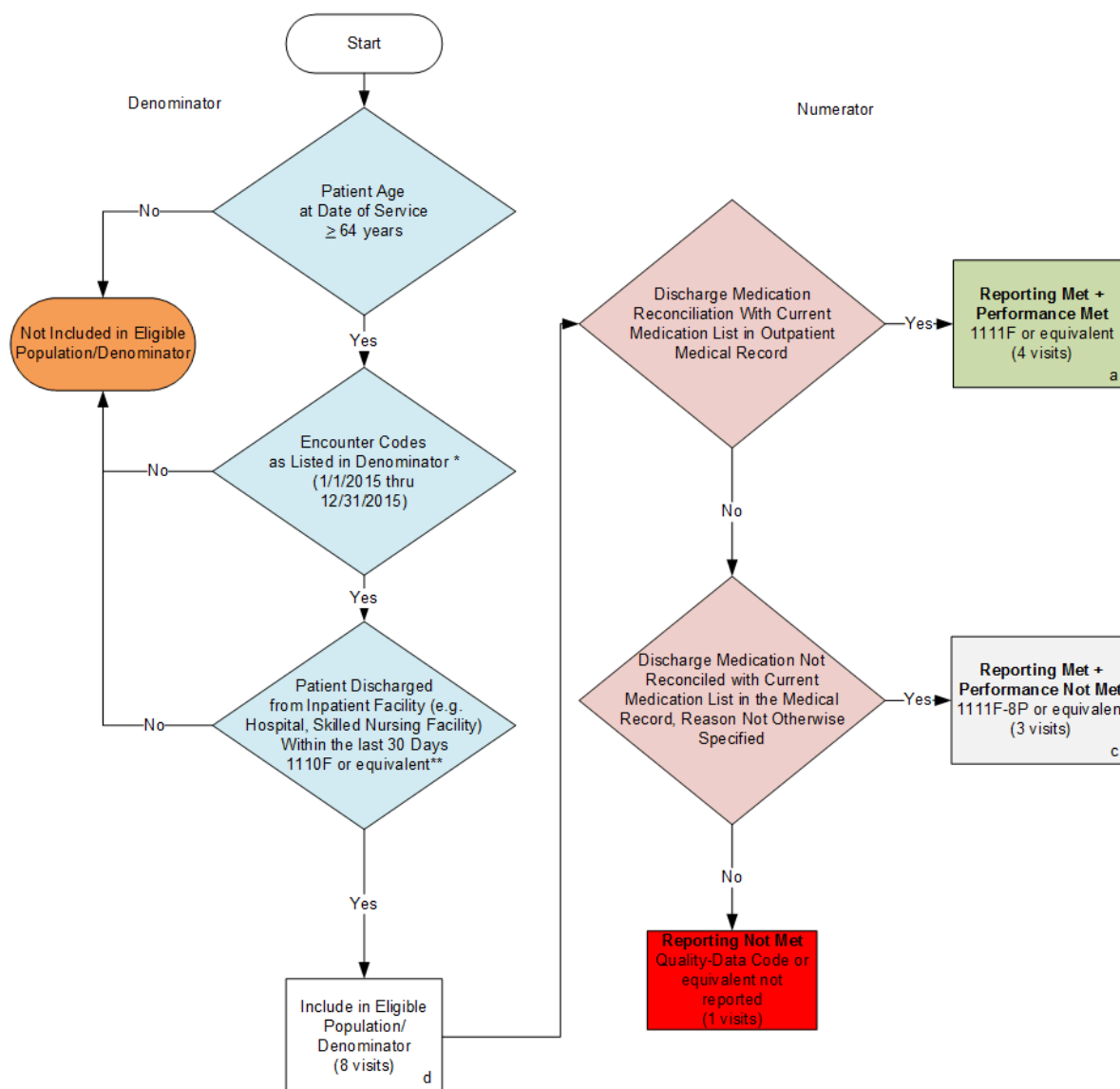
NOTE: Reporting Frequency - Visit

**Patient discharge from inpatient facility (1110F or equivalent) has been moved to the denominator of this measure to identify the measure's intended eligible population more accurately. This flow should be followed very carefully since the eligible population in this flow differs from the one posted in the Measure Specification.

CPT only copyright 2014 American Medical Association. All rights reserved.

2015 Claims/Registry Individual Measure Flow PQRS #46 NQF #0097: Medication Reconciliation

This measure will be calculated with 2 Performance Rates
Reporting Criteria Option 2



SAMPLE CALCULATIONS:

Reporting Rate=

$$\frac{\text{Performance Met (a=4 visits) + Performance Not Met (c=3 visits)}}{\text{Eligible Population / Denominator (d=8 visits)}} = \frac{7 \text{ visits}}{8 \text{ visits}} = 87.50\%$$

Performance Rate=

$$\frac{\text{Performance Met (a=4 visits)}}{\text{Reporting Numerator (7 visits)}} = \frac{4 \text{ visits}}{7 \text{ visits}} = 57.14\%$$

* See the posted Measure Specification for specific coding and instructions to report this measure.

NOTE: Reporting Frequency - Visit

**Patient discharge from inpatient facility (1110F or equivalent) has been moved to the denominator of this measure to identify the measure's intended eligible population more accurately. This flow should be followed very carefully since the eligible population in this flow differs from the one posted in the Measure Specification.

CPT only copyright 2014 American Medical Association. All rights reserved.

2015 Claims/Registry Individual Measure Flow
PQRS #46 NQF #0097: Medication Reconciliation

Please refer to the specific section of the Measure Specification to identify the denominator and numerator information for use in reporting this Individual Measure. This measure will be calculated with 2 Performance Rates.

Reporting Option 1

1. Start with Denominator
2. Check Patient Age:
 - a. If the Age is 18 through 64 years of age on Date of Service and equals No during the measurement period, do not include in Eligible Patient Population. Stop Processing.
 - b. If the Age is 18 through 64 years of age on Date of Service and equals Yes during the measurement period, proceed to check Encounter Performed.
3. Check Encounter Performed:
 - a. If Encounter as Listed in the Denominator equals No, do not include in Eligible Patient Population. Stop Processing.
 - b. If Encounter as Listed in the Denominator equals Yes, include in the Eligible population, proceed to Check Discharge Timing and Facility.
4. Check Discharge Timing and Facility:
 - a. If Patient Discharged from Inpatient Facility (e.g. Hospital skilled nursing facility) Within the last 30 Days as Listed in the Denominator equals No, do not include in Eligible Patient Population. Stop Processing.
 - b. If Patient Discharged from Inpatient Facility (e.g. Hospital skilled nursing facility) Within the Last 30 Days as Listed in the Denominator equals Yes, include in the Eligible population, proceed to Eligible Patient.
5. Denominator Population
 - a. Denominator population is all Eligible Patients in the denominator. Denominator is represented as Denominator in the Sample Calculation listed at the end of this document. Letter d equals 8 visits in the sample calculation.
6. Start Numerator
7. Check Discharge Medication Reconciliation With Current Medication List in Outpatient Medical Record:
 - a. If Discharge Medication Reconciliation With Current Medication List in Outpatient Medical Record equals Yes, include in Reporting Met and Performance Met.
 - b. Reporting Met and Performance Met letter is represented in the Reporting Rate and Performance Rate in the Sample Calculation listed at the end of this document. Letter a equals 4 visits in Sample Calculation.
 - c. If Discharge Medication Reconciliation With Current Medication List in Outpatient Medical Record equals No, proceed to Discharge Medications Not Reconciled with Current Medication List in the Medical Record, Reason Not Otherwise Specified.

8. Check Discharge Medications Not Reconciled with Current Medication List in the Medical Record, Reason Not Otherwise Specified:
 - a. If Discharge Medications Not Reconciled with Current Medication List in the Medical Record, Reason Not Otherwise Specified equals Yes, include in Reporting Met and Performance Not Met.
 - b. Reporting Met and Performance Not Met letter is represented in the Reporting Rate in the Sample Calculation listed at the end of this document. Letter c equals 3 visits in the Sample Calculation.
 - c. If Discharge Medications Not Reconciled with Current Medication List in the Medical Record, Reason Not Otherwise Specified equals No, proceed to Reporting Not Met.
9. Check Reporting Not Met:
 - a. If Reporting Not Met equals No, Quality Data Code or equivalent not reported. 1 visit has been subtracted from the reporting numerator in sample calculation.

SAMPLE CALCULATIONS:

Reporting Rate=

Performance Met (a=4 visits) + Performance Not Met (c=3 visits) =	7 visits =	87.50%
Eligible Population / Denominator (d=8 visits) =	8 visits	

Performance Rate=

Performance Met (a=4 visits) =	4 visits =	57.14%
Reporting Numerator (7 visits) =	7 visits	

2015 Claims/Registry Individual Measure Flow
PQRS #46 NQF #0097: Medication Reconciliation

Please refer to the specific section of the Measure Specification to identify the denominator and numerator information for use in reporting this Individual Measure. This measure will be calculated with 2 Performance Rates.

Reporting Option 2

10. Start with Denominator

11. Check Patient Age:

- a. If the Age is greater than or equal to 65 years of age on Date of Service and equals No during the measurement period, do not include in Eligible Patient Population. Stop Processing.
- b. If the Age is greater than or equal to 65 years of age on Date of Service and equals Yes during the measurement period, proceed to check Encounter Performed.

12. Check Encounter Performed:

- a. If Encounter as Listed in the Denominator equals No, do not include in Eligible Patient Population. Stop Processing.
- b. If Encounter as Listed in the Denominator equals Yes, include in the Eligible population, proceed to Check Discharge Timing and Facility.

13. Check Discharge Timing and Facility:

- a. If Patient Discharged from Inpatient Facility (e.g. Hospital skilled nursing facility) Within the last 30 Days as Listed in the Denominator equals No, do not include in Eligible Patient Population. Stop Processing.
- b. If Patient Discharged from Inpatient Facility (e.g. Hospital skilled nursing facility) Within the Last 30 Days as Listed in the Denominator equals Yes, include in the Eligible population, proceed to Eligible Patient.

14. Denominator Population:

- a. Denominator population is all Eligible Patients in the denominator. Denominator is represented as Denominator in the Sample Calculation listed at the end of this document. Letter d equals 8 visits in the sample calculation.

15. Start Numerator

16. Check Discharge Medication Reconciliation With Current Medication List in Outpatient Medical Record:

- a. If Discharge Medication Reconciliation With Current Medication List in Outpatient Medical Record equals Yes, include in Reporting Met and Performance Met.
- b. Reporting Met and Performance Met letter is represented in the Reporting Rate and Performance Rate in the Sample Calculation listed at the end of this document. Letter a equals 4 visits in Sample Calculation.
- c. If Discharge Medication Reconciliation With Current Medication List in Outpatient Medical Record equals No, proceed to Discharge Medications Not Reconciled

with Current Medication List in the Medical Record, Reason Not Otherwise Specified.

17. Check Discharge Medications Not Reconciled with Current Medication List in the Medical Record, Reason Not Otherwise Specified:

- a. If Discharge Medications Not Reconciled with Current Medication List in the Medical Record, Reason Not Otherwise Specified equals Yes, include in Reporting Met and Performance Not Met.
- b. Reporting Met and Performance Not Met letter is represented in the Reporting Rate in the Sample Calculation listed at the end of this document. Letter c equals 3 visits in the Sample Calculation.
- c. If Discharge Medications Not Reconciled with Current Medication List in the Medical Record, Reason Not Otherwise Specified equals No, proceed to Reporting Not Met.

18. Check Reporting Not Met:

- a. If Reporting Not Met equals No, Quality Data Code or equivalent not reported. 1 visit has been subtracted from the reporting numerator in sample calculation.

SAMPLE CALCULATIONS:

Reporting Rate=

Performance Met (a=4 visits) + Performance Not Met (c=3 visits) = 7 visits = 87.50%
Eligible Population / Denominator (d=8 visits) = 8 visits

Performance Rate=

Performance Met (a=4 visits) = 4 visits = 57.14%
Reporting Numerator (7 visits) = 7 visits