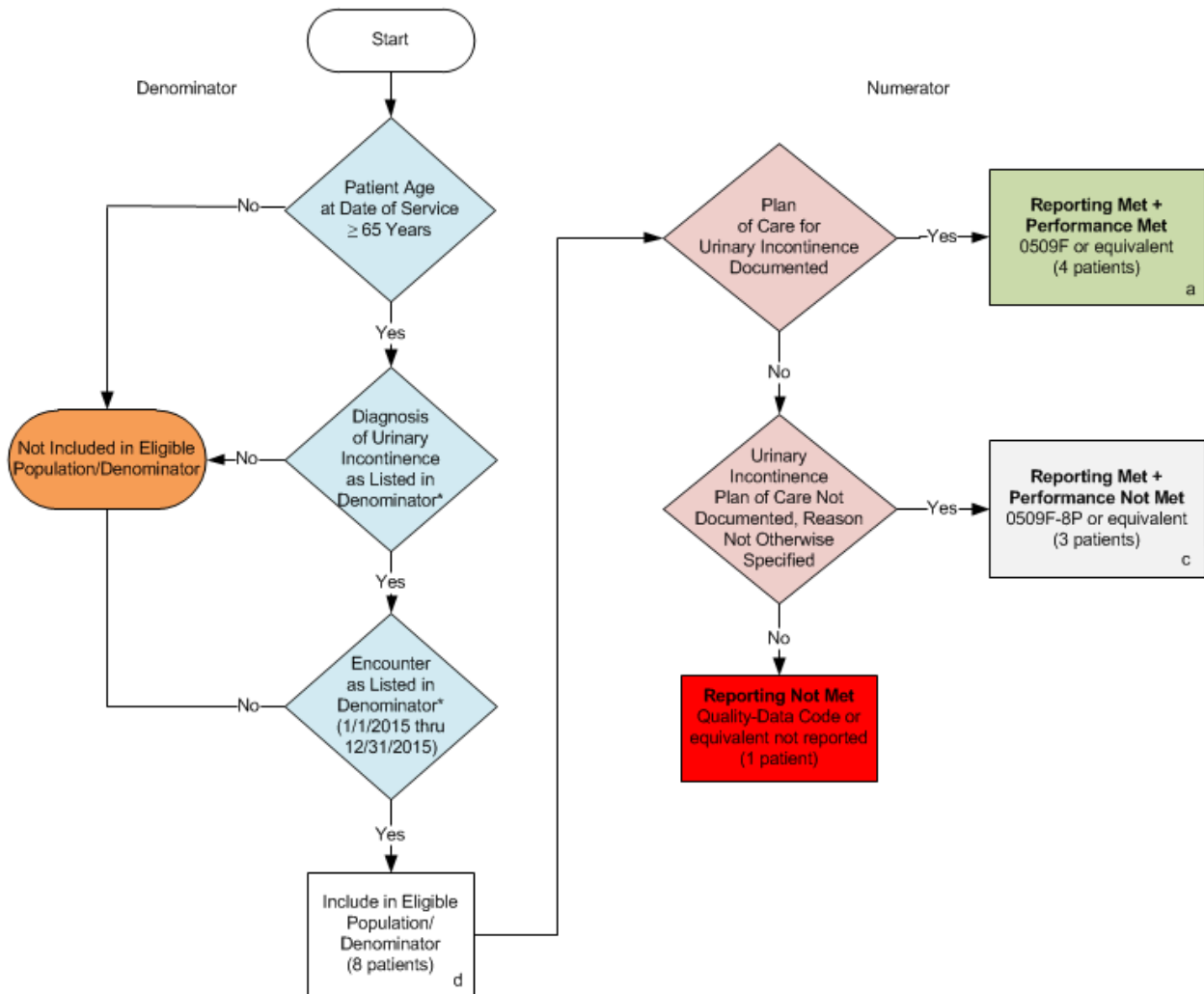


2015 Claims/Registry Individual Measure Flow
PQRS #50: Urinary Incontinence: Plan of Care for Urinary Incontinence in Women Aged 65 Years and Older



SAMPLE CALCULATIONS:

Reporting Rate=

$$\frac{\text{Performance Met (a=4 patients) + Performance Not Met (c=3 patients)}}{\text{Eligible Population / Denominator (d=8 patients)}} = \frac{7 \text{ patients}}{8 \text{ patients}} = 87.50\%$$

Performance Rate=

$$\frac{\text{Performance Met (a=4 patients)}}{\text{Reporting Numerator (7 patients)}} = \frac{4 \text{ patients}}{7 \text{ patients}} = 57.14\%$$

*See the posted Measure Specification for specific coding and instructions to report this measure.
 NOTE: Reporting Frequency – Patient-process

CPT only copyright 2014 American Medical Association. All rights reserved.
 v1

2015 Claims/Registry Individual Measure Flow
PQRS #50: Urinary Incontinence: Plan of Care for Urinary Incontinence in Women
Aged 65 Years and Older

Please refer to the specific section of the Measure Specification to identify the denominator and numerator information for use in reporting this Individual Measure.

1. Start with Denominator
2. Check Female Patient Age:
 - a. If the Female Age is greater than or equal to 65 years on Date of Service and equals No during the measurement period, do not include in Eligible Patient Population. Stop Processing.
 - b. If the Female Age is greater than or equal to 65 years on Date of Service and equals Yes during the measurement period, proceed to Patient Diagnosis.
3. Check Patient Diagnosis:
 - a. If female patient has Diagnosis of Urinary Incontinence as Listed in the Denominator equals No, do not include in Eligible Patient Population. Stop Processing.
 - b. If Female patient has Diagnosis of Urinary Incontinence as Listed in the Denominator equals Yes, proceed to check Encounter Performed.
4. Check Encounter Performed:
 - a. If Encounter as Listed in the Denominator equals No, do not include in Eligible Patient Population. Stop Processing.
 - b. If Encounter as Listed in the Denominator equals Yes, include in the Eligible population, include in the Eligible population.
5. Denominator Population
 - a. Denominator population is all Eligible Patients in the denominator. Denominator is represented as Denominator in the Sample Calculation listed at the end of this document. Letter d equals 8 patients in the sample calculation.
6. Start Numerator
7. Check Plan of Care for Urinary Incontinence Documented:
 - a. If Plan of Care for Urinary Incontinence Documented equals Yes, include in Reporting Met and Performance Met.
 - b. Reporting Met and Performance Met letter is represented in the Reporting Rate and Performance Rate in the Sample Calculation listed at the end of this document. Letter a equals 4 patients in Sample Calculation.
 - c. If Plan of Care for Urinary Incontinence Documented equals No, proceed to Plan of Care for Urinary Incontinence Documented, Reason Not Otherwise Specified.

8. Check Plan of Care for Urinary Incontinence Documented Reason Not Otherwise Specified:
 - a. If Plan of Care for Urinary Incontinence Documented, Reason Not Otherwise Specified equals Yes, include in Reporting Met and Performance Not Met.
 - b. Reporting Met and Performance Not Met letter is represented in the Reporting Rate in the Sample Calculation listed at the end of this document. Letter c equals 3 patients in the Sample Calculation.
 - c. If Plan of Care for Urinary Incontinence Documented, Reason Not Otherwise Specified equals No, proceed to Reporting Not Met.
9. Check Reporting Not Met:
 - a. If Reporting Not Met equals No, Quality Data Code or equivalent not reported. 1 patient has been subtracted from the reporting numerator in sample calculation.

SAMPLE CALCULATIONS:

Reporting Rate=

Performance Met (a=4 patients) + Performance Not Met (c=3 patients) = 7 patients = 87.50%
Eligible Population / Denominator (d=8 patients) = 8 patients

Performance Rate=

Performance Met (a=4 patients) = 4 patients = 57.14%
Reporting Numerator (7 patients) = 7 patients