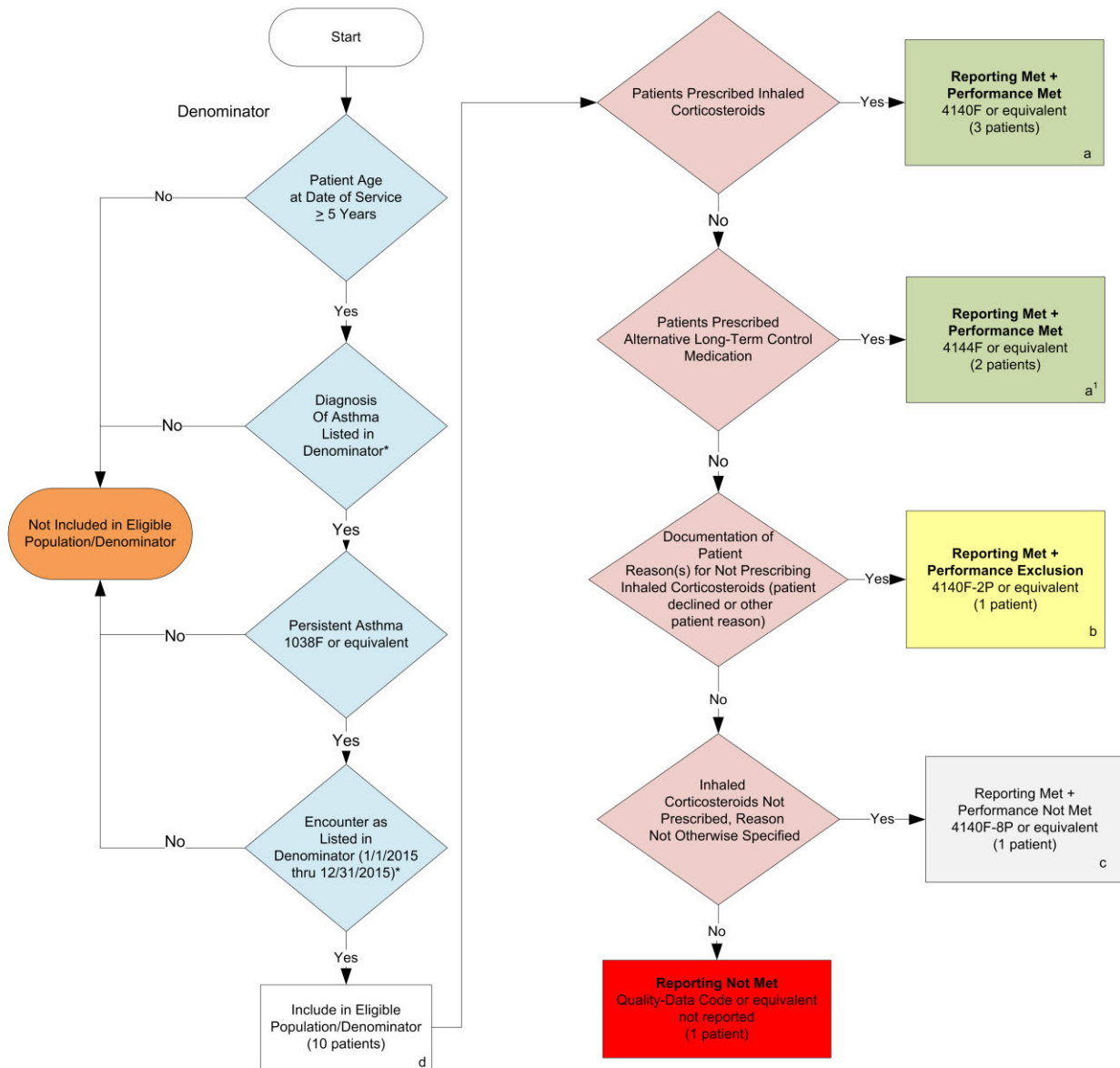


2015 Registry Individual Measure Flow
PQRS #53 NQF # 0047: Asthma: Pharmacologic Therapy for Persistent Asthma –
Ambulatory Care Setting

This Measure Requires the Reporting of Three Performance Rates**



* See the posted Measure Specification for specific coding and instructions to report this measure.

This measure will be calculated with 3 performance rates: 1) Patients prescribed inhaled corticosteroids (ICS) as their long-term control medication **AND 2) Patients prescribed alternative long-term control medications (non-ICS) **AND** 3) Total patients prescribed long-term control medication

NOTE: Reporting Frequency – Patient-process

CPT only copyright 2014 American Medical Association. All rights reserved

v1

2015 Registry Individual Measure Flow – Sample Calculations
PQRS #53 NQF #0047: Asthma – Pharmacologic Therapy for Persistent Asthma - Ambulatory Care Setting

This Measure Requires the Reporting of Three Performance Rates

SAMPLE CALCULATIONS: Reporting Rate

Reporting Rate=

Performance Met (a+a¹=5 patients) + Performance Exclusion (b = 1 patient) + Performance Not Met (c = 1 patient) = 7 patients = 70.00%
Eligible Population / Denominator (d=10 patients) = 10 patients

SAMPLE CALCULATIONS: Performance Rate One: Patients Prescribed Inhaled Corticosteroids as Long-Term Control

Performance Rate 1=

Performance Met (a=3 patients) = 3 patients = 50.00%
Reporting Numerator (7 patients) – Performance Exclusion (b =1 patient) = 6 patients

SAMPLE CALCULATIONS: Performance Rate Two: Patients Prescribed Alternative Long-Term

Performance Rate 2=

Performance Met (a¹=2 patients) = 2 patients = 33.33%
Reporting Numerator (7 patients) – Performance Exclusion (b =1 patient) = 6 patients

SAMPLE CALCULATIONS: Total Patients Prescribed Long-Term Medication

Performance Rate 3=

Performance Met (a+a¹=5 patients) = 5 patients = 83.33%
Reporting Numerator (7 patients) – Performance Exclusion (b =1 patient) = 6 patients

* See the posted Measure Specification for specific coding and instructions to report this measure.

This measure will be calculated with 3 performance rates: 1) Patients prescribed inhaled corticosteroids (ICS) as their long-term control medication **AND 2) Patients prescribed alternative long-term control medications (non-ICS) **AND** 3) Total patients prescribed long-term control medication

NOTE: Reporting Frequency – Patient-process

CPT only copyright 2014 American Medical Association. All rights reserved
v1

2015 Claims/Registry Individual Measure Flow
PQRS #53 NQF #0047: Asthma: Pharmacologic Therapy for Persistent Asthma –
Ambulatory Care Setting

Please refer to the specific section of the Measure Specification to identify the denominator and numerator information for use in reporting this Individual Measure.

1. Start with Denominator
2. Check Patient Age:
 - a. If the Age is greater than or equal to 5 years of age on Date of Service and equals No during the measurement period, do not include in Eligible Patient Population. Stop Processing.
 - b. If the Age is greater than or equal to 5 years of age on Date of Service and equals Yes during the measurement period, proceed to check Patient Diagnosis.
3. Check Patient Diagnosis:
 - a. If Diagnosis of Asthma as Listed in the Denominator equals No, do not include in Eligible Patient Population. Stop Processing.
 - b. If Diagnosis of Persistent Asthma as Listed in the Denominator equals Yes, proceed to check Persistent Asthma.
4. Check Persistent Asthma
 - a. If Persistent Asthma equals No, do not include in Eligible Patient Population. Stop Processing.
 - b. If Persistent Asthma equals Yes, proceed to check Encounter Performed.
5. Check Encounter Performed:
 - a. If Encounter as Listed in the Denominator equals No, do not include in Eligible Patient Population. Stop Processing.
 - b. If Encounter as Listed in the Denominator equals Yes, include in the Eligible Population.
6. Denominator Population:
 - a. Denominator population is all Eligible Patients in the denominator. Denominator is represented as Denominator in the Sample Calculation listed at the end of this document. Letter d equals 10 patients in the sample calculation.
7. Start Numerator
8. Check Patients Prescribed Inhaled Corticosteroids:
 - a. If Patients Prescribed Inhaled Corticosteroids equals Yes, include in Reporting Met and Performance Met.
 - b. Reporting Met and Performance Met letter is represented in the Reporting Rate and Performance Rate in the Sample Calculation listed at the end of this document. Letter a equals 3 patients in Sample Calculation.
 - c. If Patients Prescribed Inhaled Corticosteroids equals No, proceed to Patients Prescribed Alternative Long –Term Control Medication.

9. Check Patients Prescribed Alternative Long-Term Control Medication:
 - a. If Patients Prescribed Alternative Long-Term Control Medication equals Yes, include in Reporting Met and Performance Met.
 - b. Reporting Met and Performance Met letter is represented in the Reporting Rate and Performance Rate in the Sample Calculation listed at the end of this document. Letter a¹ equals 2 patients in Sample Calculation.
 - c. If Patients Prescribed Alternative Long-Term Control Medication equals No, proceed to Documentation of Patient Reason(s) for Not Prescribing Alternative Long-Term Control Medication (patient declined or other patient reason).
10. Check Documentation of Patient Reason(s) for Not Prescribing Inhaled Corticosteroids (patient declined or other patient reason):
 - a. If Documentation of Patient Reason(s) for not Prescribing Inhaled Corticosteroids (patient declined or other patient reason) equals Yes, include in Reporting Met and Performance Exclusion.
 - b. Reporting Met and Performance Exclusion letter is represented in the Reporting Rate in the Sample Calculation listed at the end of this document. Letter b equals 1 patient in the Sample Calculation.
 - c. If Documentation of Patient Reason(s) for Not Prescribing Inhaled Corticosteroids (patient declined or other patient reason equals No, proceed to Inhaled Corticosteroids Not Prescribed, Reason Not Otherwise Specified.
11. Check Inhaled Corticosteroids Not Prescribed, Reason Not Otherwise Specified:
 - a. If Inhaled Corticosteroids Not Prescribed, Reason Not Otherwise Specified equals Yes, include in Reporting Met and Performance Exclusion.
 - b. Reporting Met and Performance Not Met letter is represented in the Reporting Rate in the Sample Calculation listed at the end of this document. Letter c equals 1 patient in the Sample Calculation.
 - c. If Inhaled Corticosteroids Not Prescribed, Reason Not Otherwise Specified equals No, proceed to Reporting Not Met.
12. Check Reporting Not Met:
 - a. If Reporting Not Met equals No, Quality Data Code or equivalent not reported. 1 patient has been subtracted from the reporting numerator in the sample calculation.

SAMPLE CALCULATIONS: Reporting Rate

Reporting Rate=

$$\frac{\text{Performance Met (a+a}^1\text{=5 patients) + Performance Exclusion (b = 1 patient) + Performance Not Met (c= 1 patient)}}{\text{Eligible Population / Denominator (d=10 patients)}} = \frac{7 \text{ patients}}{10 \text{ patients}} = 70.00\%$$

SAMPLE CALCULATIONS: Performance Rate One: Patients Prescribed Inhaled Corticosteroids as Long-Term Control

Performance Rate 1=

$$\frac{\text{Performance Met (a=3 patients)}}{\text{Reporting Numerator (7 patients) - Performance Exclusion (b = 1 patient)}} = \frac{3 \text{ patients}}{6 \text{ patients}} = 50.00\%$$

SAMPLE CALCULATIONS: Performance Rate Two: Patients Prescribed Alternative Long-Term

Performance Rate 2=

$$\frac{\text{Performance Met (a'=2 patients)}}{\text{Reporting Numerator (7 patients) - Performance Exclusion (b =1 patient)}} = \frac{2 \text{ patients}}{6 \text{ patients}} = 33.33\%$$

SAMPLE CALCULATIONS: Total Patients Prescribed Long-Term Medication

Performance Rate 3=

$$\frac{\text{Performance Met (a+a'=5 patients)}}{\text{Reporting Numerator (7 patients) - Performance Exclusion (b =1 patient)}} = \frac{5 \text{ patients}}{6 \text{ patients}} = 83.33\%$$

****This measure will be calculated with 3 performance rates:** 1) Patients prescribed inhaled corticosteroids (ICS) as their long-term control medication **AND** 2) Patients prescribed alternative long-term control medications (non-ICS) **AND** 3) Total patients prescribed long-term control medication