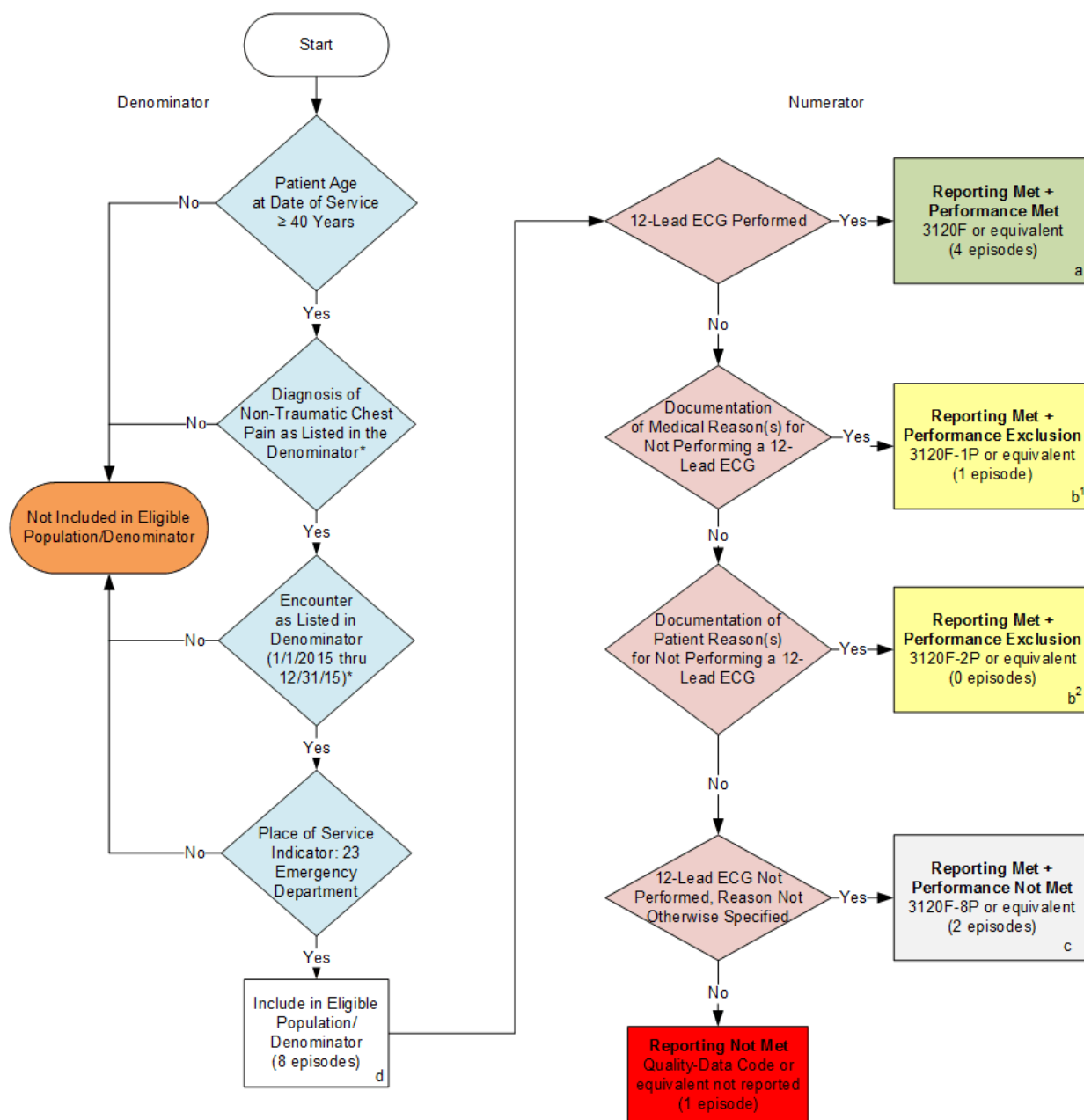


2015 Claims/Registry Individual Measure Flow
PQRS #54 NQF #0090: Emergency Medicine: 12-Lead Electrocardiogram (ECG) Performed for
Non-Traumatic Chest Pain



SAMPLE CALCULATIONS:

Reporting Rate=

$$\frac{\text{Performance Met (a=4 episodes)} + \text{Performance Exclusion (b}^1\text{+b}^2\text{=1 episode)} + \text{Performance Not Met (c=2 episodes)}}{\text{Eligible Population / Denominator (d=8 episodes)}} = \frac{7 \text{ episodes}}{8 \text{ episodes}} = 87.50\%$$

Performance Rate=

$$\frac{\text{Performance Met (a=4 episodes)}}{\text{Reporting Numerator (7 episodes) – Performance Exclusion (b}^1\text{+b}^2\text{=1 episode)}} = \frac{4 \text{ episodes}}{6 \text{ episodes}} = 66.67\%$$

*See the posted Measure Specification for specific coding and instructions to report this measure.

NOTE: Reporting Frequency - Episode

CPT only copyright 2014 American Medical Association. All rights reserved.

2015 Claims/Registry Individual Measure Flow
PQRS #54 NQF #0090: Emergency Medicine: 12-Lead Electrocardiogram
(ECG) Performed for Non-Traumatic Chest Pain

Please refer to the specific section of the Measure Specification to identify the denominator and numerator information for use in reporting this Individual Measure.

1. Start with Denominator
2. Check Patient Age:
 - a. If the Age is greater than or equal to 40 years of age on Date of Service and equals No during the measurement period, do not include in Eligible Patient Population. Stop Processing.
 - b. If the Age is greater than or equal to 40 years of age on Date of Service and equals Yes during the measurement period, proceed to check Patient Diagnosis.
3. Check Patient Diagnosis:
 - a. If Diagnosis of Non-Traumatic Chest Pain as Listed in the Denominator equals No, do not include in Eligible Patient Population. Stop Processing.
 - b. If Diagnosis of Non-Traumatic Chest Pain as Listed in the Denominator equals Yes, proceed to check Encounter Performed.
4. Check Encounter Performed:
 - a. If Encounter as Listed in the Denominator equals No, do not include in Eligible Patient Population. Stop Processing.
 - b. If Encounter as Listed in the Denominator equals Yes, include in the Eligible population.
5. Check Place of Service:
 - a. If Place of Service indicator 23 for Emergency Department equals No, do not include in Eligible Patient Population. Stop Processing.
 - b. If Place of Service indicator 23 for Emergency Department equals Yes, include in the Eligible population.
6. Denominator Population:
 - a. Denominator population is all Eligible Patients in the denominator. Denominator is represented as Denominator in the Sample Calculation listed at the end of this document. Letter d equals 8 episodes in the sample calculation.
7. Start Numerator
8. Check was 12 Lead ECG Performed:
 - a. If 12 Lead ECG Performed equals Yes, include in Reporting Met and Performance Met.
 - b. Reporting Met and Performance Met letter is represented in the Reporting Rate and Performance Rate in the Sample Calculation listed at the end of this document. Letter a equals 4 episodes in Sample Calculation.
 - c. If 12 Lead ECG Performed equals No, proceed to check Documentation of Medical Reason(s) for Not Performing a 12-Lead ECG.

9. Check Documentation of Medical Reason(s) for Not Performing a 12-Lead ECG:
 - a. If Documentation of Medical Reason(s) for Not Performing a 12-Lead ECG equals Yes, include in Reporting Met and Performance Exclusion.
 - b. Reporting Met and Performance Exclusion letter is represented in the Reporting Rate and Performance Rate in the Sample Calculation listed at the end of this document. Letter b¹ equals 1 episode in the Sample Calculation.
 - c. If Documentation of Medical Reason(s) for Not Performing a 12-Lead ECG equals No, proceed to check Documentation of Patient Reason(s) for Not Performing a 12-Lead ECG.
10. Check Documentation of Patient Reason(s) for Not Performing a 12-Lead ECG:
 - a. If Documentation of Patient Reason(s) for Not Performing a 12-Lead ECG equals Yes, include in Reporting Met and Performance Exclusion.
 - b. Reporting Met and Performance Exclusion letter is represented in the Reporting Rate and Performance Rate in the Sample Calculation listed at the end of this document. Letter b² equals 0 episodes in the Sample Calculation.
 - c. If Documentation of Patient Reason(s) for Not Performing a 12-Lead ECG equals No, proceed to check 12-Lead ECG Not Performed, Reason Not Otherwise Specified.
11. Check was 12-Lead ECG Not Performed, Reason Not Otherwise Specified:
 - a. If 12-Lead ECG Not Performed, Reason Not Otherwise Specified equals Yes, include in Reporting Met and Performance Not Met.
 - b. Reporting Met and Performance Not Met letter is represented in the Reporting Rate in the Sample Calculation listed at the end of this document. Letter c equals 2 episodes in the Sample Calculation.
 - c. If 12-Lead ECG Not Performed, Reason Not Otherwise Specified equals No, proceed to check Reporting Not Met.
12. Check Reporting Not Met
 - a. If Reporting Not Met equals No, Quality Data Code or equivalent not reported. 1 episode has been subtracted from reporting numerator in the sample calculation.

SAMPLE CALCULATIONS:

Reporting Rate=

$$\frac{\text{Performance Met (a=4 episodes)} + \text{Performance Exclusion (b}^1\text{+b}^2\text{=1 episode)} + \text{Performance Not Met (c=2 episodes)}}{\text{Eligible Population / Denominator (d=8 episodes)}} = \frac{7 \text{ episodes}}{8 \text{ episodes}} = 87.50\%$$

Performance Rate=

$$\frac{\text{Performance Met (a=4 episodes)}}{\text{Reporting Numerator (7 episodes) – Performance Exclusion (b}^1\text{+b}^2\text{=1 episode)}} = \frac{4 \text{ episodes}}{6 \text{ episodes}} = 66.67\%$$