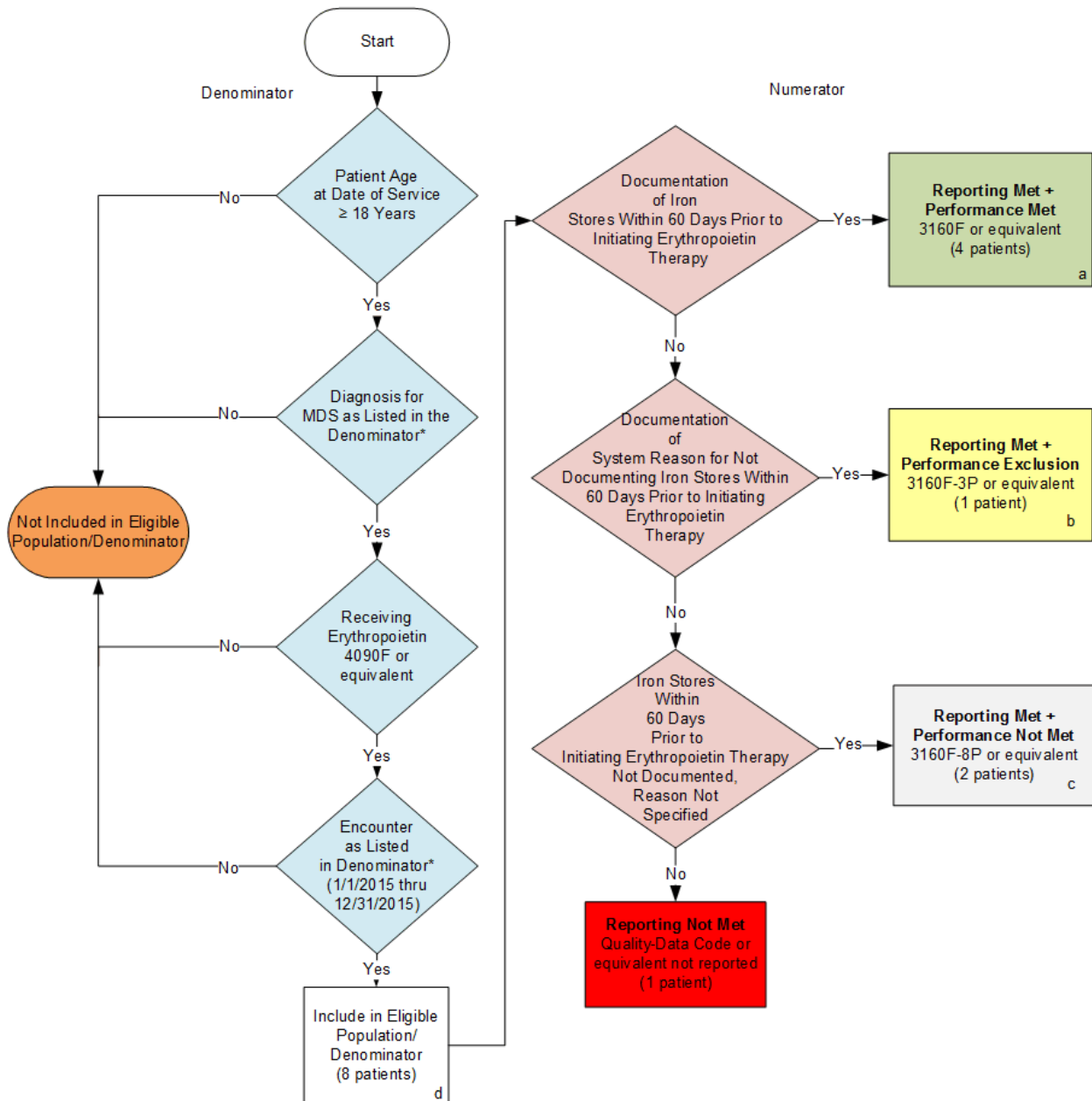


2015 Registry Individual Measure Flow
PQRS #68 NQF # 0378: Hematology: Myelodysplastic Syndrome (MDS): Documentation of Iron Stores in Patients Receiving Erythropoietin Therapy



SAMPLE CALCULATIONS:

Reporting Rate=

$$\frac{\text{Performance Met (a=4 patients)} + \text{Performance Exclusion (b=1 patient)} + \text{Performance Not Met (c=2 patients)}}{\text{Eligible Population / Denominator (d=8 patients)}} = \frac{7 \text{ patients}}{8 \text{ patients}} = 87.50\%$$

Performance Rate=

$$\frac{\text{Performance Met (a=4 patients)}}{\text{Reporting Numerator (7 patients) - Performance Exclusion (b=1 patient)}} = \frac{4 \text{ patients}}{6 \text{ patients}} = 66.67\%$$

*See the posted Measure Specification for specific coding and instructions to report this measure.

NOTE: Reporting Frequency: Patient- process

CPT only copyright 2014 American Medical Association. All rights reserved.

2015 Registry Individual Measure Flow
PQRS #68 NQF #0378: Hematology: Myelodysplastic Syndrome (MDS):
Documentation of Iron Stores in Patients Receiving Erythropoietin Therapy

Please refer to the specific section of the Measure Specification to identify the denominator and numerator information for use in reporting this Individual Measure.

1. Start with Denominator
2. Check Patient Age:
 - a. If the Patient Age is greater than or equal to 18 Years of age at Date of Service and equals No during the measurement period, do not include in Eligible Patient Population. Stop Processing.
 - b. If the Patient Age is greater than or equal to 18 Years of age at Date of Service and equals Yes during the measurement period, proceed to check Patient Diagnosis.
3. Check Patient Diagnosis:
 - a. If Diagnosis for MDS as Listed in the Denominator equals No, do not include in Eligible Patient Population. Stop Processing.
 - b. If Diagnosis for MDS as Listed in the Denominator equals Yes, proceed to check Receiving Erythropoietin 4090F or equivalent.
4. Check Receiving Erythropoietin 4090F or equivalent:
 - a. If Receiving Erythropoietin 4090F or equivalent equals No, do not include in Eligible Patient Population. Stop Processing.
 - b. Receiving Erythropoietin 4090F or equivalent Yes, proceed to Encounter Performed.
5. Check Encounter Performed:
 - a. If Encounter as Listed in the Denominator equals No, do not include in Eligible Patient Population. Stop Processing.
 - b. If Encounter as Listed in the Denominator equals Yes, proceed to Eligible Population
6. Denominator Population:
 - a. Denominator population is all Eligible Patients in the denominator. Denominator is represented as Denominator in the Sample Calculation listed at the end of this document. Letter d equals 8 patients in the sample calculation.
7. Start Numerator
8. Check Documentation of Iron Stores Prior to Initiating Erythropoietin Therapy:
 - a. If Documentation of Iron Stores Prior to Initiating Erythropoietin Therapy equals Yes, include in Reporting Met and Performance Met.
 - b. Reporting Met and Performance Met letter is represented in the Reporting Rate and Performance Rate in the Sample Calculation listed at the end of this document. Letter a equals 4 patients in Sample Calculation.

- c. If Documentation of Iron Stores Prior to Initiating Erythropoietin Therapy equals No, proceed to Documentation of System Reasons for Not Documenting Iron Stores Prior to Initiating Erythropoietin Therapy.
9. Check Documentation of System Reasons for Not Documenting Iron Stores Prior to Initiating Erythropoietin Therapy:
 - a. If Documentation of System Reasons for Not Documenting Iron Stores Prior to Initiating Erythropoietin Therapy equals Yes, include in Reporting Met and Performance Exclusion.
 - b. Reporting Met and Performance Exclusion is represented in the Reporting Rate and Performance Rate in the Sample Calculation listed at the end of this document. Letter b equals 1 patient in the Sample Calculation.
 - c. If Documentation of System Reasons for Not Documenting Iron Stores Prior to Initiating Erythropoietin Therapy equals No, proceed to Iron Stores Prior to Initiating Erythropoietin Therapy Not Documented, Reason Not Specified.
10. Check Iron Stores Prior to Initiating Erythropoietin Therapy Not Documented, Reason Not Specified:
 - a. If Iron Stores Prior to Initiating Erythropoietin Therapy Not Documented, Reason Not Specified equals Yes, include in the Reporting Met and Performance Not Met.
 - b. Reporting Met and Performance Not Met letter is represented in the Reporting Rate in the Sample Calculation listed at the end of this document. Letter c equals 2 patients in the Sample Calculation.
 - c. If Iron Stores Prior to Initiating Erythropoietin Therapy Not Documented, Reason Not Specified equals No, proceed to Reporting Not Met.
11. Check Reporting Not Met:
 - a. If Reporting Not Met, the Quality Data Code or equivalent was not reported. 1 patient has been subtracted from the reporting numerator in sample calculation.

SAMPLE CALCULATIONS:

Reporting Rate=

$$\frac{\text{Performance Met (a=4 patients)} + \text{Performance Exclusion (b=1 patient)} + \text{Performance Not Met (c=2 patients)}}{\text{Eligible Population / Denominator (d=8 patients)}} = \frac{7 \text{ patients}}{8 \text{ patients}} = 87.50\%$$

Performance Rate=

$$\frac{\text{Performance Met (a=4 patients)}}{\text{Reporting Numerator (7 patients) - Performance Exclusion (b=1 patient)}} = \frac{4 \text{ patients}}{6 \text{ patients}} = 66.67\%$$