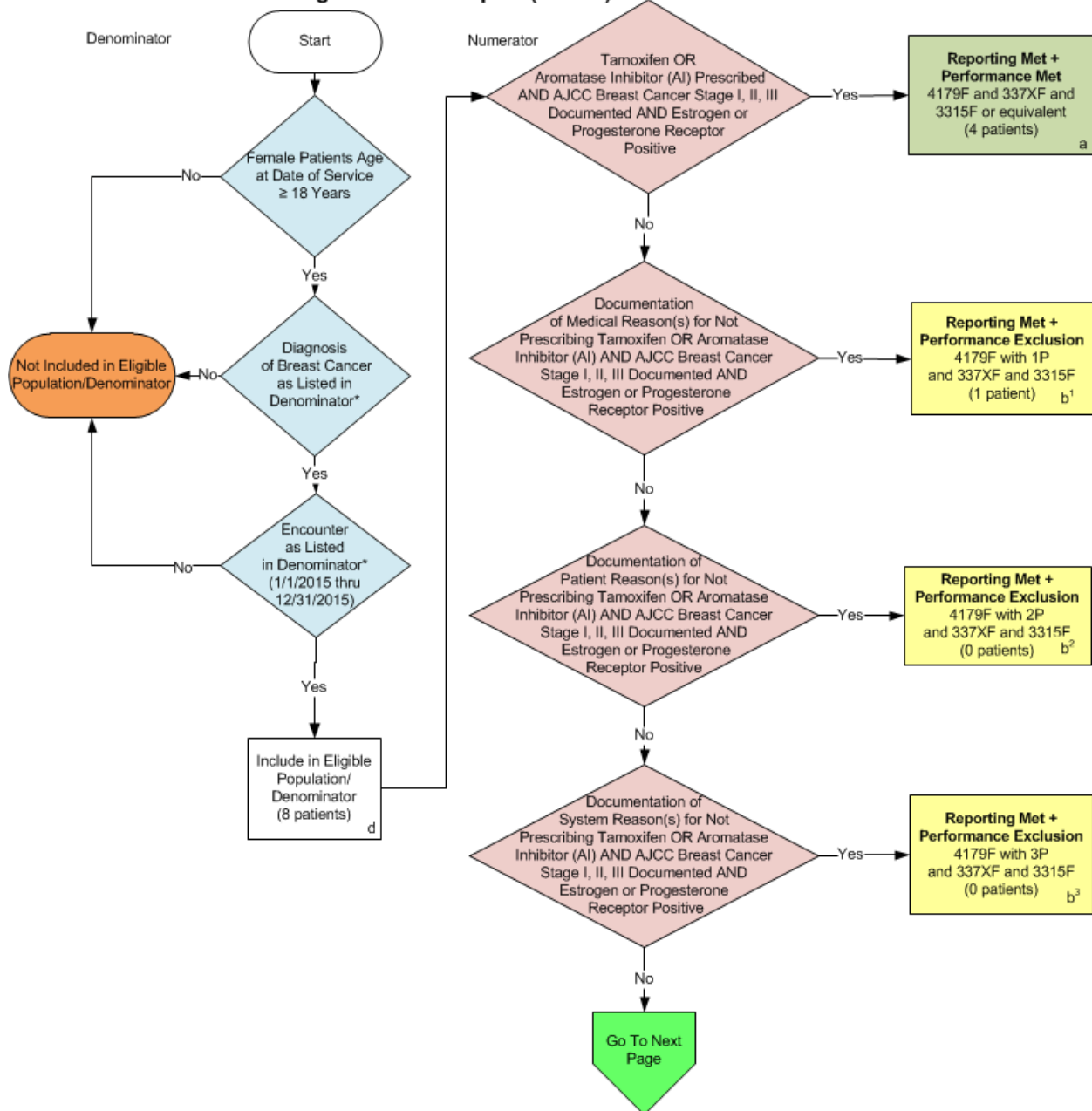


**2015 Claims/Registry Individual Measure Flow**  
**PQRS #71 NQF #0387: Breast Cancer: Hormonal Therapy for Stage IC-IIIC Estrogen Receptor/  
 Progesterone Receptor (ER/PR) Positive Breast Cancer**

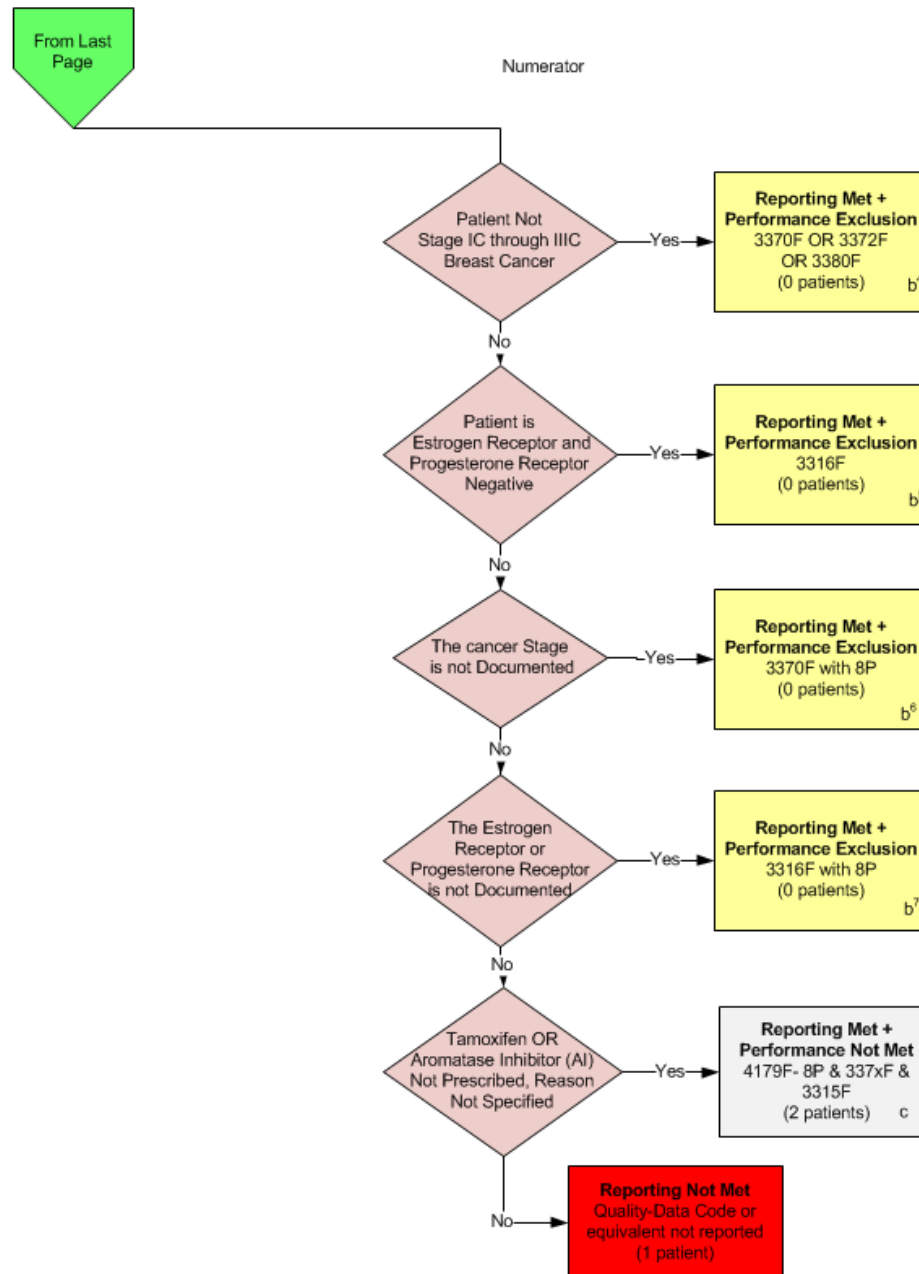


\*See the posted Measure Specification for specific coding and instructions to report this measure  
 NOTE: Report Frequency – Patient Process.

CPT only copyright 2014 American Medical Association. All rights reserved.

v1

**2015 Claims/Registry Individual Measure Flow**  
**PQRS #71 NQF #0387: Breast Cancer: Hormonal Therapy for Stage IC-IIIC Estrogen Receptor/  
 Progesterone Receptor (ER/PR) Positive Breast Cancer**



**SAMPLE CALCULATIONS:**

**Reporting Rate=**

Performance Met(a=4 patients)+Performance Exclusion(b¹+b²+b³+b⁴+b⁵+b⁶+b⁷=1 patient)+Performance Not Met(c=2 patients)= 7 patients =87.50%  
 Eligible Population / Denominator (d=8 patients) = 8 patients

**Performance Rate=**

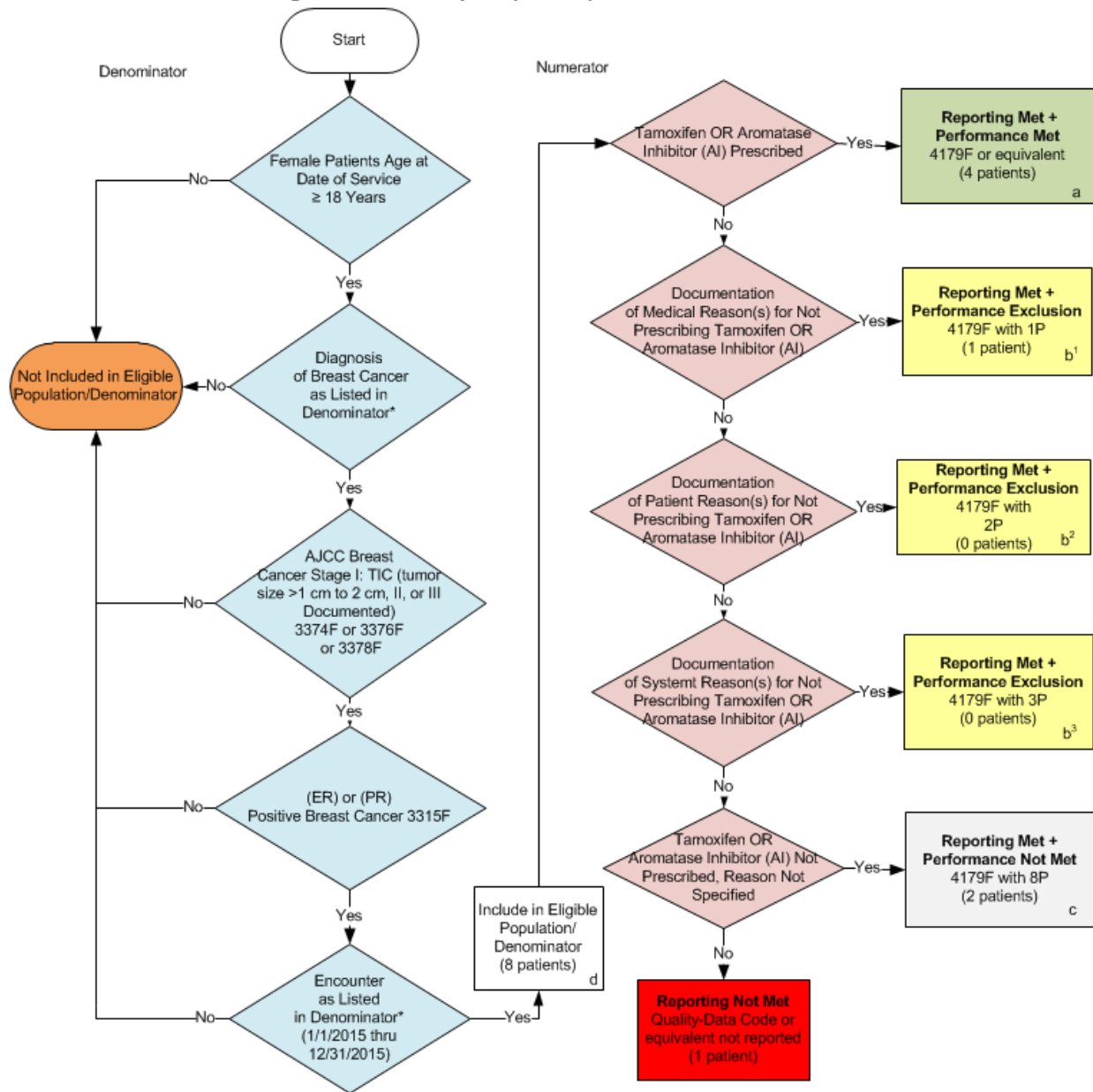
Performance Met (a=4 patients) = 4 patients = 66.67%  
 Reporting Numerator (7 patients) – Performance Exclusion (b=1 patient) = 6 patients

\*See the posted Measure Specification for specific coding and instructions to report this measure  
 NOTE: Report Frequency – Patient Process.

CPT only copyright 2014 American Medical Association. All rights reserved.

v1

**2015 Claims/Registry Individual Measure Flow**  
**PQRS #71 NQF #0387: Breast Cancer: Hormonal Therapy for Stage IC-IIIC Estrogen Receptor/  
 Progesterone Receptor (ER/PR) Positive Breast Cancer**



**SAMPLE CALCULATIONS:**

**Reporting Rate=**

Performance Met (a=4 patients) + Performance Exclusion (b¹+b²+b³=1 patient) + Performance Not Met (c=2 patients) = 7 patients = 87.50%  
 Eligible Population / Denominator (d=8 patients) = 8 patients

**Performance Rate=**

Performance Met (a=4 patients) = 4 patients = 66.67%  
 Reporting Numerator (7 patients) – Performance Exclusion (b=1 patient) = 6 patients

\*See the posted Measure Specification for specific coding and instructions to report this measure  
 NOTE: Report Frequency – Patient Process.

CPT only copyright 2014 American Medical Association. All rights reserved.

v1

**2015 Registry Individual Measure Flow**  
**PQRS #71 NQF #0387: Breast Cancer: Hormonal Therapy for Stage IC-IIIC**  
**Estrogen Receptor/Progesterone Receptor (ER/PR) Positive Breast Cancer**

Please refer to the specific section of the Measure Specification to identify the denominator and numerator information for use in reporting this Individual Measure.

1. Start with Denominator
2. Check Patient Age:
  - a. If Female Patient Age is greater than or equal to 18 Years of age at Date of Service equals No during the measurement period, do not include in Eligible Patient Population. Stop Processing.
  - b. If Female Patient Age is greater than or equal to 18 Years of age at Date of Service equals Yes during the measurement period, proceed to check Patient Diagnosis.
3. Check Patient Diagnosis:
  - a. If Diagnosis of Breast Cancer as Listed in the Denominator equals No, do not include in Eligible Patient Population. Stop Processing.
  - b. If Diagnosis of Breast Cancer as Listed in the Denominator equals Yes, proceed to check AJCC Breast Cancer Stage1.
4. Check AJCC Breast Cancer Stage I: TIC (tumor size > 1 cm to 2cm, II or III Documented) 3374F or 3376F or 3378F.
  - a. If AJCC Breast Cancer Stage I: TIC (tumor size >1 cm to 2 cm, II or III Documented) 3374F or 3376F or 3378F equals No, do not include in Eligible Patient Population. Stop Processing.
  - b. If AJCC Breast Cancer Stage I: TIC (tumor size > 1 cm to 2cm, II or III Documented) 3374F or 3376F or 3378F equals Yes, proceed to check (ER) or (PR) Positive Breast Cancer 3315F.
5. Check (ER) or (PR) Positive Breast Cancer 3315F:
  - a. If (ER) or (PR) Positive Breast Cancer 3315F equals No, do not include in Eligible Patient Population. Stop Processing.
  - b. If (ER) or (PR) Positive Breast Cancer 3315F equals Yes, proceed to check Encounter Performed.
6. Check Encounter Performed:
  - a. If Encounter Performed as Listed in Denominator equals No, do not include in Eligible Patient Population. Stop Processing.
  - b. If Encounter Performed as Listed in Denominator equals Yes, process to Check Denominator Population.
7. Denominator Population:
  - a. Denominator population is all Eligible Patients in the denominator. Denominator is represented as Denominator in the Sample Calculation listed at the end of this document. Letter d equals 8 patients in the sample calculation.
8. Start Numerator

9. Check Tamoxifen OR Aromatase Inhibitor (AI) Prescribed:
  - a. If Tamoxifen OR Aromatase Inhibitor (AI) Prescribed equals Yes, include in Reporting Met and Performance Met.
  - b. Reporting Met and Performance Met letter is represented in the Reporting Rate and Performance Rate in the Sample Calculation listed at the end of this document. Letter a equals 4 patients in Sample Calculation.
  - c. If Tamoxifen OR Aromatase Inhibitor (AI) Prescribed equals No, proceed to check Documentation of Medical Reasons for Not Prescribing Tamoxifen OR Aromatase Inhibitor (AI).
10. Check Documentation of Medical Reasons for Not Prescribing Tamoxifen OR Aromatase Inhibitor (AI):
  - a. If Documentation of Medical Reasons for Not Prescribing Tamoxifen OR Aromatase Inhibitor (AI) equals Yes, include in Reporting Met and Performance Exclusion.
  - b. Reporting Met and Performance Exclusion letter is represented in the Reporting Rate and Performance Rate in the Sample Calculation listed at the end of this document. Letter b<sup>1</sup> equals 1 patient in the Sample Calculation.
  - c. If Documentation of Medical Reasons for Not Prescribing Tamoxifen OR Aromatase Inhibitor (AI) equals No, proceed to check Documentation of Patient Reasons for Not Prescribing Tamoxifen OR Aromatase Inhibitor (AI).
11. Check Documentation of Patient Reasons for Not Prescribing Tamoxifen OR Aromatase Inhibitor (AI).
  - a. If Documentation of Patient Reasons for Not Prescribing Tamoxifen OR Aromatase Inhibitor (AI) equals Yes, include in Reporting Met and Performance Exclusion.
  - b. Reporting Met and Performance Exclusion letter is represented in the Reporting Rate and Performance Rate in the Sample Calculation listed at the end of this document. Letter b<sup>2</sup> equals 0 patients in the Sample Calculation.
  - c. If Documentation of Patient Reasons for Not Prescribing Tamoxifen OR Aromatase Inhibitor (AI) equals No, proceed to check Documentation of System Reasons for Not Prescribing Tamoxifen OR Aromatase Inhibitor (AI).
12. Check Documentation of System Reasons for Not Prescribing Tamoxifen OR Aromatase Inhibitor (AI).
  - a. If Documentation of System Reasons for Not Prescribing Tamoxifen OR Aromatase Inhibitor (AI) equals Yes, include in Reporting Met and Performance Exclusion.
  - b. Reporting Met and Performance Exclusion letter is represented in the Reporting Rate and Performance Rate in the Sample Calculation listed at the end of this document. Letter b<sup>3</sup> equals 0 patients in the Sample Calculation.
  - c. If Documentation of System Reasons for Not Prescribing Tamoxifen OR Aromatase Inhibitor (AI) equals No, proceed to Tamoxifen OR Aromatase Inhibitor (AI) Not Prescribed, Reason Not Otherwise Specified.
13. Check Tamoxifen OR Aromatase Inhibitor (AI) Not Prescribed, Reason Not Specified:
  - a. If Tamoxifen OR Aromatase Inhibitor (AI) Not Prescribed, Reason Not Otherwise Specified equals Yes, include in Reporting Met and Performance Not Met.
  - b. Reporting Met and Performance Not Met letter is represented in the Reporting Rate in the Sample Calculation listed at the end of this document. Letter c equals 2 patients in the Sample Calculation.

- c. If Tamoxifen OR Aromatase Inhibitor (AI) Not Prescribed, Reason Not Otherwise Specified equals No, proceed to Reporting Not Met.

14. Check Reporting Not Met:

- a. If Reporting Not Met, the Quality Data Code or equivalent was not reported. 1 patient has been subtracted from the reporting numerator in sample calculation.

**SAMPLE CALCULATIONS:**

**Reporting Rate=**

$$\frac{\text{Performance Met (a=4 patients)} + \text{Performance Exclusion (b}^1\text{+b}^2\text{+b}^3\text{=1 patient)} + \text{Performance Not Met (c=2 patients)}}{\text{Eligible Population / Denominator (d=8 patients)}} = \frac{7 \text{ patients}}{8 \text{ patients}} = 87.50\%$$

**Performance Rate=**

$$\frac{\text{Performance Met (a=4 patients)}}{\text{Reporting Numerator (7 patients) – Performance Exclusion (b=1 patient)}} = \frac{4 \text{ patients}}{6 \text{ patients}} = 66.67\%$$

**2015 Claims Individual Measure Flow**  
**PQRS #71 NQF #0387: Breast Cancer: Hormonal Therapy for Stage IC-IIIC**  
**Estrogen Receptor/Progesterone Receptor (ER/PR) Positive Breast Cancer**

Please refer to the specific section of the Measure Specification to identify the denominator and numerator information for use in reporting this Individual Measure.

1. Start with Denominator
2. Check Patient Age:
  - a. If Female Patient Age is greater than or equal to 18 Years of age at Date of Service equals No during the measurement period, do not include in Eligible Patient Population. Stop Processing.
  - b. If Female Patient Age is greater than or equal to 18 Years of age at Date of Service equals Yes during the measurement period, proceed to check Patient Diagnosis.
3. Check Patient Diagnosis:
  - a. If Diagnosis of Breast Cancer as Listed in the Denominator equals No, do not include in Eligible Patient Population. Stop Processing.
  - b. If Diagnosis of Breast Cancer as Listed in the Denominator equals Yes, proceed to check Encounter Performed.
4. Check Encounter Performed:
  - a. If Encounter as Listed in the Denominator equals No, do not include in Eligible Patient Population. Stop Processing.
  - b. If Encounter as Listed in the Denominator equals Yes, include in the Eligible population.
5. Denominator Population:
  - a. Denominator population is all Eligible Patients in the denominator. Denominator is represented as Denominator in the Sample Calculation listed at the end of this document. Letter d equals 8 patients in the sample calculation.
6. Start Numerator
7. Check Tamoxifen OR Aromatase Inhibitor (AI) Prescribed:
  - a. If Tamoxifen OR Aromatase Inhibitor (AI) Prescribed equals Yes, include in Reporting Met and Performance Met.
  - b. Reporting Met and Performance Met letter is represented in the Reporting Rate and Performance Rate in the Sample Calculation listed at the end of this document. Letter a equals 4 patients in Sample Calculation.
  - c. If Tamoxifen OR Aromatase Inhibitor (AI) Prescribed equals No, proceed to check Documentation of Medical Reasons for Not Prescribing Tamoxifen OR Aromatase Inhibitor (AI).
8. Check Documentation of Medical Reasons for Not Prescribing Tamoxifen OR Aromatase Inhibitor (AI):
  - a. If Documentation of Medical Reasons for Not Prescribing Tamoxifen OR Aromatase Inhibitor (AI) equals Yes, include in Reporting Met and Performance Exclusion.

- b. Reporting Met and Performance Exclusion letter is represented in the Reporting Rate and Performance Rate in the Sample Calculation listed at the end of this document. Letter b<sup>1</sup> equals 1 patient in the Sample Calculation.
  - c. If Documentation of Medical Reasons for Not Prescribing Tamoxifen OR Aromatase Inhibitor (AI) equals No, proceed to check Documentation of Patient Reasons for Not Prescribing Tamoxifen OR Aromatase Inhibitor (AI). Check Documentation of Medical Reasons for Not Prescribing Tamoxifen OR Aromatase Inhibitor (AI).
- 9. Check Documentation of Patient Reasons for Not Prescribing Tamoxifen OR Aromatase Inhibitor (AI):
  - a. If Documentation of Patient Reasons for Not Prescribing Tamoxifen OR Aromatase Inhibitor (AI) equals Yes, include in Reporting Met and Performance Exclusion.
  - b. Reporting Met and Performance Exclusion letter is represented in the Reporting Rate and Performance Rate in the Sample Calculation listed at the end of this document. Letter b<sup>2</sup> equals 0 patients in the Sample Calculation.
  - c. If Documentation of Patient Reasons for Not Prescribing Tamoxifen OR Aromatase Inhibitor (AI) equals No, proceed to check Documentation of System Reasons for Not Prescribing Tamoxifen OR Aromatase Inhibitor (AI).
- 10. Check Documentation of System Reasons for Not Prescribing Tamoxifen OR Aromatase Inhibitor (AI):
  - a. If Documentation of System Reasons for Not Prescribing Tamoxifen OR Aromatase Inhibitor (AI) equals Yes, include in Reporting Met and Performance Exclusion.
  - b. Reporting Met and Performance Exclusion letter is represented in the Reporting Rate and Performance Rate in the Sample Calculation listed at the end of this document. Letter b<sup>3</sup> equals 0 patients in the Sample Calculation.
  - c. If Documentation of System Reasons for Not Prescribing Tamoxifen OR Aromatase Inhibitor (AI) equals No, proceed to Check Patient Not Stage IC through IIIC Breast Cancer.
- 11. Check Patient Not Stage IC through IIIC Breast Cancer:
  - a. If Patient Not Stage IC through IIIC Breast Cancer equals Yes, include in Reporting Met and Performance Exclusion.
  - b. Reporting Met and Performance Exclusion letter is represented in the Reporting Rate and Performance Rate in the Sample Calculation listed at the end of this document. Letter b<sup>4</sup> equals 0 patients in the Sample Calculation.
  - c. If Patient Not Stage IC through IIIC Breast Cancer No, proceed to check Patient is Estrogen or Progesterone Receptor Negative.
- 12. Check Patient is Estrogen or Progesterone Receptor Negative:
  - a. If Patient is Estrogen or Progesterone Receptor Negative Yes, include in Reporting Met and Performance Exclusion.
  - b. Reporting Met and Performance Exclusion letter is represented in the Reporting Rate and Performance Rate in the Sample Calculation listed at the end of this document. Letter b<sup>5</sup> equals 0 patients in the Sample Calculation.
  - c. If Patient is Estrogen or Progesterone Receptor Negative No, proceed to Check Cancer Stage not Documented.
- 13. Check Cancer Stage not Documented:



- a. If Cancer Stage not Documented Yes, include in Reporting Met and Performance Exclusion.
- b. Reporting Met and Performance Exclusion letter is represented in the Reporting Rate and Performance Rate in the Sample Calculation listed at the end of this document. Letter b<sup>6</sup> equals 0 patients in the Sample Calculation.
- c. If Documentation of System Reasons for Not Prescribing Tamoxifen OR Aromatase Inhibitor (AI) equals No, proceed to Check Estrogen Receptor or Progesterone Receptor is not Documented.

14. Check Estrogen Receptor or Progesterone Receptor is not Documented:

- a. If Estrogen Receptor or Progesterone Receptor is not Documented equals Yes, include in Reporting Met and Performance Exclusion.
- b. Reporting Met and Performance Exclusion letter is represented in the Reporting Rate and Performance Rate in the Sample Calculation listed at the end of this document. Letter b<sup>7</sup> equals 0 patients in the Sample Calculation.
- c. If Estrogen Receptor or Progesterone Receptor is not Documented No, proceed to Check Tamoxifen OR Aromatase Inhibitor (AI) Not Prescribed, Reason Not Specified.

15. Check Tamoxifen OR Aromatase Inhibitor (AI) Not Prescribed, Reason Not Specified:

- a. If Tamoxifen OR Aromatase Inhibitor (AI) Not Prescribed, Reason Not Otherwise Specified equals Yes, include in Reporting Met and Performance Not Met.
- b. Reporting Met and Performance Not Met letter is represented in the Reporting Rate in the Sample Calculation listed at the end of this document. Letter c equals 2 patients in the Sample Calculation.
- c. If Tamoxifen OR Aromatase Inhibitor (AI) Not Prescribed, Reason Not Otherwise Specified equals No, proceed to Reporting Not Met.

16. Check Reporting Not Met:

- a. If Reporting Not Met, the Quality Data Code or equivalent was not reported. 1 patient has been subtracted from the reporting numerator in sample calculation.

**SAMPLE CALCULATIONS:**

**Reporting Rate=**

$\frac{\text{Performance Met}(a=4 \text{ patients}) + \text{Performance Exclusion}(b^1 + b^2 + b^3 + b^4 + b^5 + b^6 + b^7 = 1 \text{ patient}) + \text{Performance Not Met}(c=2 \text{ patients})}{\text{Eligible Population / Denominator (d=8 patients)}} = \frac{7 \text{ patients}}{8 \text{ patients}} = 87.50\%$

**Performance Rate=**

$\frac{\text{Performance Met (a=4 patients)}}{\text{Reporting Numerator (7 patients) - Performance Exclusion (b=1 patient)}} = \frac{4 \text{ patients}}{6 \text{ patients}} = 66.67\%$