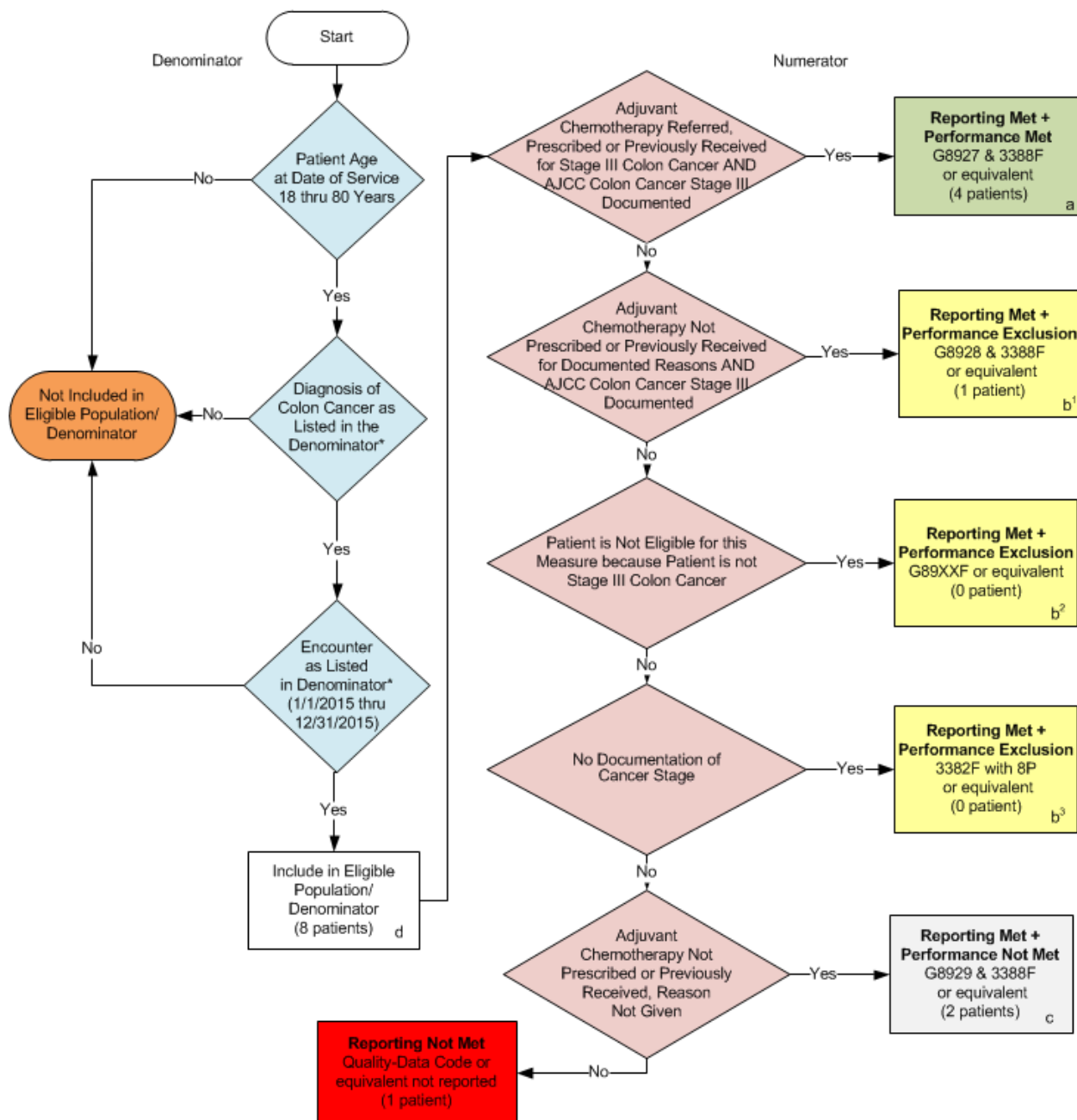


**2015 Claims/Registry Individual Measure Flow**  
**PQRS #72 NQF #0385: Colon Cancer: Chemotherapy for AJCC Stage III Colon Cancer Patients**



**SAMPLE CALCULATIONS:**

**Reporting Rate=**  

$$\frac{\text{Performance Met (a=4 patients)} + \text{Performance Exclusion (b¹+b²+b³=1 patient)} + \text{Performance Not Met (c=2 patients)}}{\text{Eligible Population / Denominator (d=8 patients)}} = \frac{7 \text{ patients}}{8 \text{ patients}} = 87.50\%$$

**Performance Rate=**  

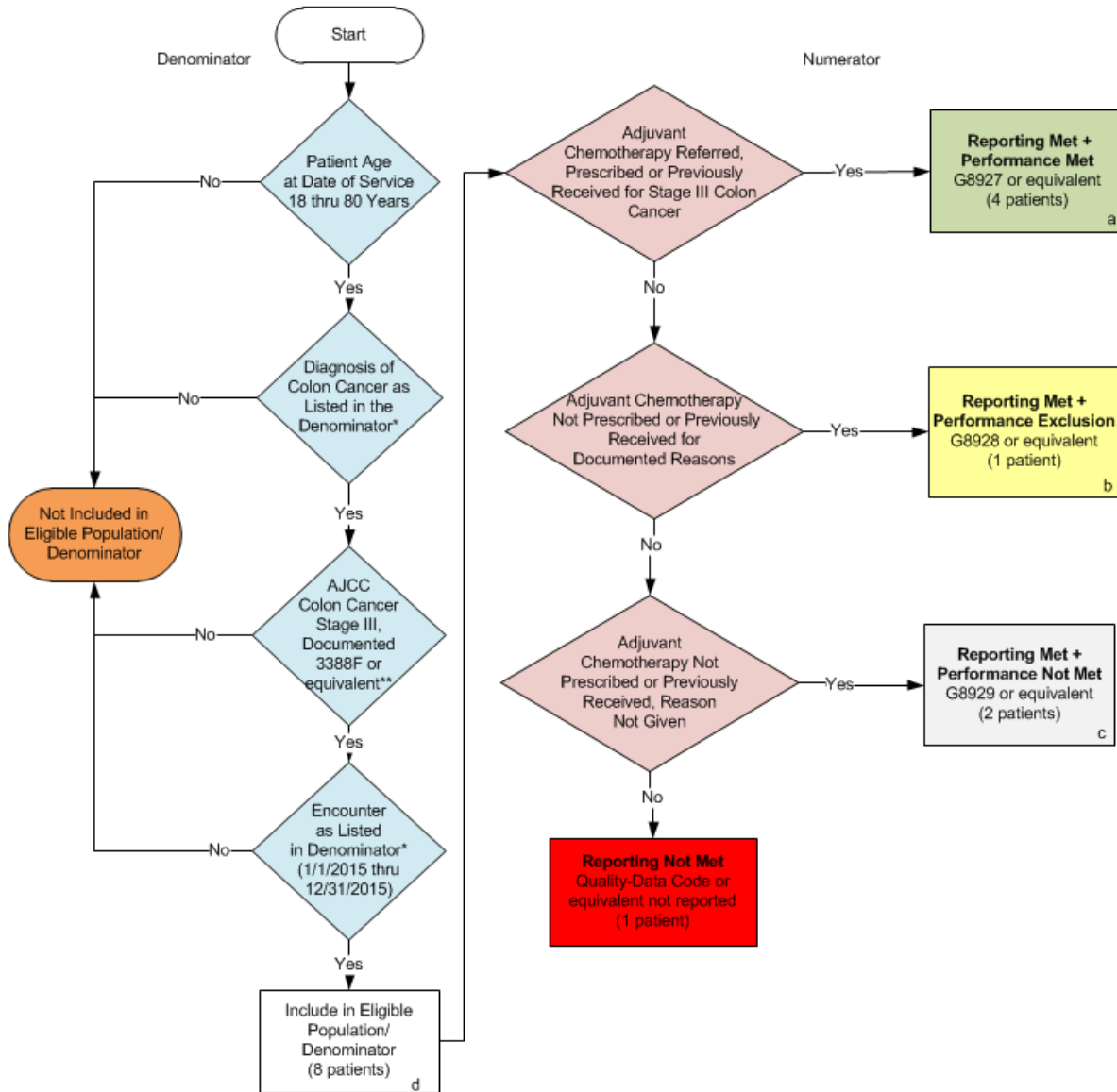
$$\frac{\text{Performance Met (a=4 patients)}}{\text{Reporting Numerator (7 patients) – Performance Exclusion (b=1 patient)}} = \frac{4 \text{ patients}}{6 \text{ patients}} = 66.67\%$$

\*See the posted Measure Specification for specific coding and instructions to report this measure.

NOTE: Reporting Frequency: Patient-process

v1

**2015 Claims/Registry Individual Measure Flow**  
**PQRS #72 NQF #0385: Colon Cancer: Chemotherapy for AJCC Stage III Colon Cancer Patients**



**SAMPLE CALCULATIONS:**

**Reporting Rate=**

$$\frac{\text{Performance Met (a=4 patients)} + \text{Performance Exclusion (b=1 patient)} + \text{Performance Not Met (c=2 patients)}}{\text{Eligible Population / Denominator (d=8 patients)}} = \frac{7 \text{ patients}}{8 \text{ patients}} = 87.50\%$$

**Performance Rate=**

$$\frac{\text{Performance Met (a=4 patients)}}{\text{Reporting Numerator (7 patients) - Performance Exclusion (b=1 patient)}} = \frac{4 \text{ patients}}{6 \text{ patients}} = 66.67\%$$

\*See the posted Measure Specification for specific coding and instructions to report this measure.

NOTE: Reporting Frequency: Patient-process

v1

**2015 Claims Individual Measure Flow**  
**PQRS #72 NQF #0385: Colon Cancer: Chemotherapy for AJCC Stage III Colon Cancer Patients**

Please refer to the specific section of the Measure Specification to identify the denominator and numerator information for use in reporting this Individual Measure.

1. Start with Denominator
2. Check Patient Age:
  - a. If the Patient Age at Date of Service equal to 18 Years thru 80 Years equals No during the measurement period, do not include in Eligible Patient Population. Stop Processing.
  - b. If the Patient Age at Date of Service equal to 18 Years thru 80 Years equals Yes during the measurement period, proceed to check Patient Diagnosis.
3. Check Patient Diagnosis:
  - a. If Diagnosis for Colon Cancer as Listed in the Denominator equals No, do not include in Eligible Patient Population. Stop Processing.
  - b. If Diagnosis for Colon Cancer as Listed in the Denominator equals Yes, proceed to Check Encounter Performed.
4. Check Encounter Performed:
  - a. If Encounter as Listed in the Denominator equals No, do not include in Eligible Patient Population. Stop Processing.
  - b. If Encounter as Listed in the Denominator equals Yes, include in the Eligible population.
5. Denominator Population:
  - a. Denominator population is all Eligible Patients in the denominator. Denominator is represented as Denominator in the Sample Calculation listed at the end of this document. Letter d equals 8 patients in the sample calculation.
6. Start Numerator
7. Check Adjuvant Chemotherapy Referred, Prescribed or Previously Received for Stage III Colon Cancer and AJCC Colon Cancer Stage III Documented:
  - a. If Adjuvant Chemotherapy Referred, Prescribed or Previously Received for Stage III Colon Cancer and AJCC Colon Cancer Stage III Documented equals Yes, include in Reporting Met and Performance Met.
  - b. Reporting Met and Performance Met letter is represented in the Reporting Rate and Performance Rate in the Sample Calculation listed at the end of this document. Letter a equals 4 patients in Sample Calculation.
  - c. If Adjuvant Chemotherapy Referred, Prescribed or Previously Received for Stage III Colon Cancer and AJCC Colon Cancer Stage III Documented equals No, proceed to Check Adjuvant Chemotherapy Not Prescribed or Previously Received for Documented Reasons and AJCC Colon Cancer Stage III Documented.
8. Check Adjuvant Chemotherapy Not Prescribed or Previously Received for Documented Reasons and AJCC Colon Cancer Stage III Documented:

- a. If Adjuvant Chemotherapy Not Prescribed or Previously Received for Documented Reasons and AJCC Colon Cancer Stage III Documented equals Yes, include in Reporting Met and Performance Exclusion.
  - b. Reporting Met and Performance Exclusion is represented in the Reporting Rate and Performance Rate in the Sample Calculation listed at the end of this document. Letter b<sup>1</sup> equals 1 patient in the Sample Calculation.
  - c. If Adjuvant Chemotherapy Not Prescribed or Previously Received for Documented Reasons and AJCC Colon Cancer Stage III Documented equals No, proceed to Check Patient is Not Eligible for this Measure because Patient is not Stage III Colon Cancer.
9. Check Patient is Not Eligible for this Measure because Patient is not Stage III Colon Cancer:
  - a. If Patient is Not Eligible for this Measure because Patient is not Stage III Colon Cancer equals Yes, include in Reporting Met and Performance Exclusion.
  - b. Reporting Met and Performance Exclusion is represented in the Reporting Rate and Performance Rate in the Sample Calculation listed at the end of this document. Letter b<sup>2</sup> equals 0 patients in the Sample Calculation.
  - c. If Patient is Not Eligible for this Measure because Patient is not Stage III Colon Cancer equals No, proceed to Check No Documentation of Cancer Stage.
10. Check No Documentation of Cancer Stage:
  - a. If Check No Documentation of Cancer Stage equals Yes, include in Reporting Met and Performance Exclusion.
  - b. Reporting Met and Performance Exclusion is represented in the Reporting Rate and Performance Rate in the Sample Calculation listed at the end of this document. Letter b<sup>3</sup> equals 0 patients in the Sample Calculation.
  - c. If Check No Documentation of Cancer Stage equals No, proceed to Adjuvant Chemotherapy Not Prescribed or Previously Received, Reason Not Given.
11. Check Adjuvant Chemotherapy Not Prescribed or Previously Received, Reason Not Given:
  - a. If Adjuvant Chemotherapy Not Prescribed or Previously Received, Reason Not Given equals Yes, include in the Reporting Met and Performance Not Met.
  - b. Reporting Met and Performance Not Met letter is represented in the Reporting Rate in the Sample Calculation listed at the end of this document. Letter c equals 2 patients in the Sample Calculation.
  - c. If Adjuvant Chemotherapy Not Prescribed or Previously Received, Reason Not Given equals No, proceed to Reporting Not Met.
12. Check Reporting Not Met:
  - a. If Reporting Not Met, the Quality Data Code or equivalent was not reported. 1 episode has been subtracted from the reporting numerator in sample calculation.

#### **SAMPLE CALCULATIONS:**

##### **Reporting Rate=**

$$\frac{\text{Performance Met (a=4 patients)} + \text{Performance Exclusion (b}^1 + \text{b}^2 + \text{b}^3 = 1 \text{ patient)} + \text{Performance Not Met (c=2 patients)}}{\text{Eligible Population / Denominator (d=8 patients)}} = \frac{7 \text{ patients}}{8 \text{ patients}} = 87.50\%$$

##### **Performance Rate=**

$$\frac{\text{Performance Met (a=4 patients)}}{\text{Reporting Numerator (7 patients) – Performance Exclusion (b=1 patient)}} = \frac{4 \text{ patients}}{6 \text{ patients}} = 66.67\%$$

**2015 Registry Individual Measure Flow**  
**PQRS #72 NQF #0385: Colon Cancer: Chemotherapy for AJCC Stage III Colon Cancer Patients**

Please refer to the specific section of the Measure Specification to identify the denominator and numerator information for use in reporting this Individual Measure.

13. Start with Denominator

14. Check Patient Age:

- a. If the Patient Age at Date of Service equal to 18 Years thru 80 Years equals No during the measurement period, do not include in Eligible Patient Population. Stop Processing.
- b. If the Patient Age at Date of Service equal to 18 Years thru 80 Years equals Yes during the measurement period, proceed to check Patient Diagnosis.

15. Check Patient Diagnosis:

- a. If Diagnosis for Colon Cancer as Listed in the Denominator equals No, do not include in Eligible Patient Population. Stop Processing.
- b. If Diagnosis for Colon Cancer as Listed in the Denominator equals Yes, proceed to Check AJCC Colon Cancer Stage III, Documented 3388F or equivalent.

16. Check AJCC Colon Cancer Stage III, Documented 3388F or equivalent:

- a. If AJCC Colon Cancer Stage III, Documented 3388F or equivalent equals No, do not include in Eligible Patient Population. Stop Processing.
- b. If AJCC Colon Cancer Stage III, Documented 3388F or equivalent equals Yes, proceed to check Encounter Performed.

17. Check Encounter Performed:

- a. If Encounter as Listed in the Denominator equals No, do not include in Eligible Patient Population. Stop Processing.
- b. If Encounter as Listed in the Denominator equals Yes, include in the Eligible population.

18. Denominator Population:

- a. Denominator population is all Eligible Patients in the denominator. Denominator is represented as Denominator in the Sample Calculation listed at the end of this document. Letter d equals 8 patients in the sample calculation.

19. Start Numerator

20. Check Adjuvant Chemotherapy Referred, Prescribed or Previously Received for Stage III Colon Cancer:

- a. If Adjuvant Chemotherapy Referred, Prescribed or Previously Received for Stage III Colon Cancer equals Yes, include in Reporting Met and Performance Met.
- b. Reporting Met and Performance Met letter is represented in the Reporting Rate and Performance Rate in the Sample Calculation listed at the end of this document. Letter a equals 4 patients in Sample Calculation.
- c. If Adjuvant Chemotherapy Referred, Prescribed or Previously Received for Stage III Colon Cancer equals No, proceed to Adjuvant Chemotherapy Not Prescribed or Previously Received for Documented Reasons.

21. Check Adjuvant Chemotherapy Not Prescribed or Previously Received for Documented Reasons
- If Adjuvant Chemotherapy Not Prescribed or Previously Received for Documented Reasons equals Yes, include in Reporting Met and Performance Exclusion.
  - Reporting Met and Performance Exclusion is represented in the Reporting Rate and Performance Rate in the Sample Calculation listed at the end of this document. Letter b equals 1 patient in the Sample Calculation.
  - If Adjuvant Chemotherapy Not Prescribed or Previously Received for Documented Reasons equals No, proceed to Adjuvant Chemotherapy Not Prescribed or Previously Received, Reason Not Given.
22. Check Adjuvant Chemotherapy Not Prescribed or Previously Received, Reason Not Given:
- If Adjuvant Chemotherapy Not Prescribed or Previously Received, Reason Not Given equals Yes, include in the Reporting Met and Performance Not Met.
  - Reporting Met and Performance Not Met letter is represented in the Reporting Rate in the Sample Calculation listed at the end of this document. Letter c equals 2 patients in the Sample Calculation.
  - If Adjuvant Chemotherapy Not Prescribed or Previously Received, Reason Not Given equals No, proceed to Reporting Not Met.
23. Check Reporting Not Met:
- If Reporting Not Met, the Quality Data Code or equivalent was not reported. 1 episode has been subtracted from the reporting numerator in sample calculation.

#### **SAMPLE CALCULATIONS:**

##### **Reporting Rate=**

$$\frac{\text{Performance Met (a=4 patients)} + \text{Performance Exclusion (b=1 patient)} + \text{Performance Not Met (c=2 patients)}}{\text{Eligible Population / Denominator (d=8 patients)}} = \frac{7 \text{ patients}}{8 \text{ patients}} = 87.50\%$$

##### **Performance Rate=**

$$\frac{\text{Performance Met (a=4 patients)}}{\text{Reporting Numerator (7 patients) – Performance Exclusion (b=1 patient)}} = \frac{4 \text{ patients}}{6 \text{ patients}} = 66.67\%$$