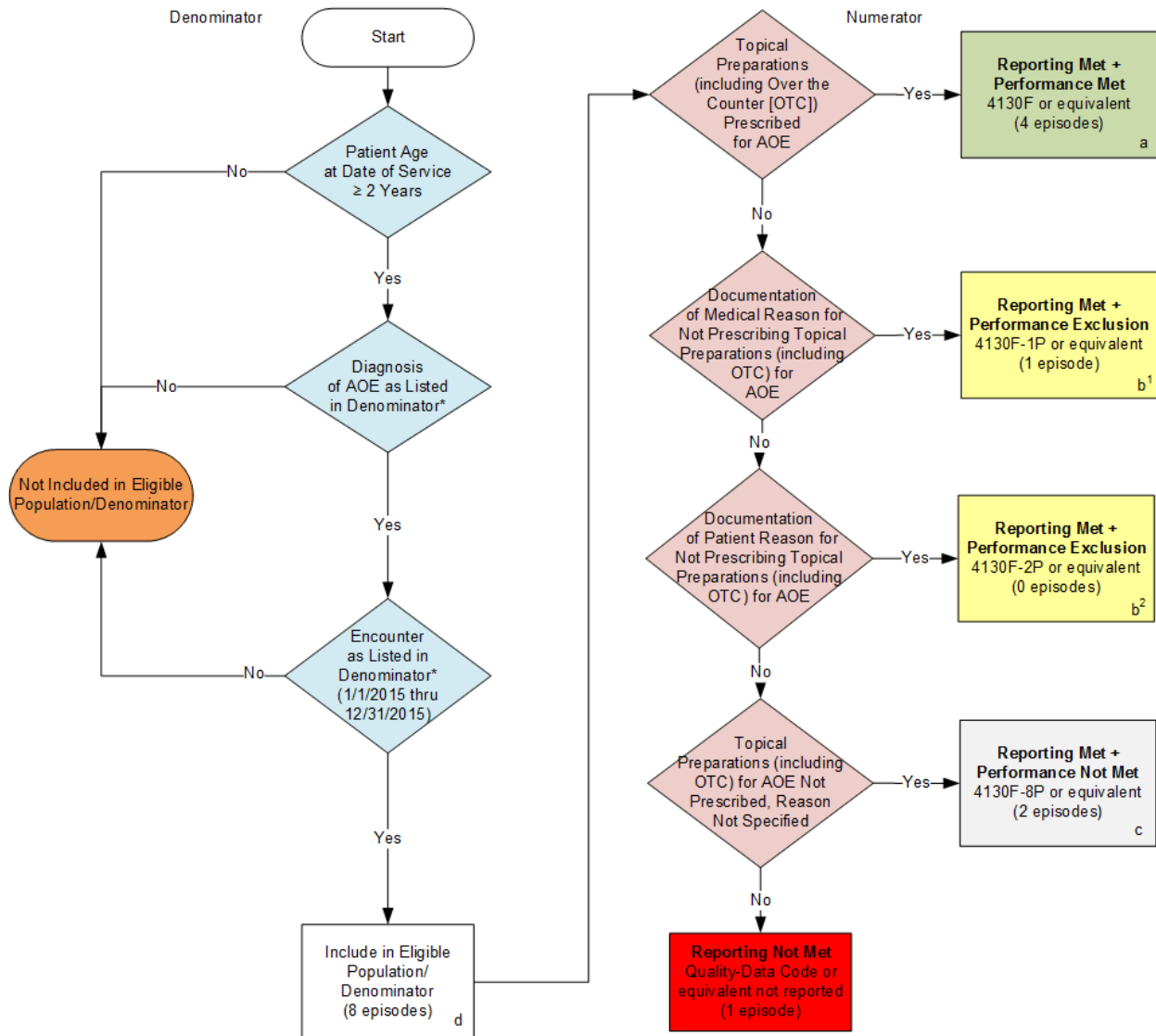


2015 Claims/Registry Individual Measure Flow
PQRS #91 NQF #0653: Acute Otitis Externa (AOE): Topical Therapy



SAMPLE CALCULATIONS:

Reporting Rate=

$$\frac{\text{Performance Met (a=4 episodes)} + \text{Performance Exclusion (b}^1\text{+b}^2\text{=1 episode)} + \text{Performance Not Met (c=2 episodes)}}{\text{Eligible Population / Denominator (d=8 episodes)}} = \frac{7 \text{ episodes}}{8 \text{ episodes}} = 87.50\%$$

Performance Rate=

$$\frac{\text{Performance Met (a=4 episodes)}}{\text{Reporting Numerator (7 episodes) - Performance Exclusion (b}^1\text{+b}^2\text{=1 episode)}} = \frac{4 \text{ episodes}}{6 \text{ episodes}} = 66.67\%$$

*See the posted Measure Specification for specific coding and instructions to report this measure.

NOTE: Reporting Frequency: Episode

CPT only copyright 2014 American Medical Association. All rights reserved

2015 Claims/Registry Individual Measure Flow
PQRS #91 NQF #0653: Acute Otitis Externa (AOE): Topical Therapy

Please refer to the specific section of the Measure Specification to identify the denominator and numerator information for use in reporting this Individual Measure.

1. Start with Denominator
2. Check Patient Age:
 - a. If the Age is greater than or equal to 2 years of age at Date of Service and equals No during the measurement period, do not include in Eligible Patient Population. Stop Processing.
 - b. If the Age is greater than or equal to 2 years of age at Date of Service and equals Yes during the measurement period, proceed to check Patient Diagnosis.
3. Check Patient Diagnosis:
 - a. If Diagnosis for AOE as Listed in the Denominator equals No, do not include in Eligible Patient Population. Stop Processing.
 - b. If Diagnosis for AOE as Listed in the Denominator equals Yes, proceed to Check Encounter Performed.
4. Check Encounter Performed:
 - a. If Encounter as Listed in Denominator equals No, do not include in Eligible Patient Population. Stop Processing.
 - b. If Encounter as Listed in Denominator equals Yes, include in the Eligible population.
5. Denominator Population:
 - a. Denominator population is all Eligible Patients in the denominator. Denominator is represented as Denominator in the Sample Calculation listed at the end of this document. Letter d equals 8 episodes in the sample calculation.
6. Start Numerator
7. Check Topical Preparations (including Over the Counter) Prescribed for AOE:
 - a. If Topical Preparations (including Over the Counter) Prescribed for AOE equals Yes, include in Reporting Met and Performance Met.
 - b. Reporting Met and Performance Met letter is represented in the Reporting Rate and Performance Rate in the Sample Calculation listed at the end of this document. Letter a equals 4 episodes in Sample Calculation.
 - c. If Topical Preparations (including Over the Counter) Prescribed for AOE equals No, proceed to Documentation of Medical Reason for Not Prescribing Topical Preparations (Including Over the Counter) for AOE.
8. Check Documentation of Medical Reason for Not Prescribing Topical Preparations (Including Over the Counter) for AOE:
 - a. If Documentation of Medical Reason for Not Prescribing Topical Preparations for AOE equals Yes, include in the Reporting Met and Performance Exclusion.
 - b. Reporting Met and Performance Exclusion is represented in the Reporting Rate and Performance Rate in the Sample Calculation listed at the end of this document. Letter b¹ equals 1 episode in the Sample Calculation.

- c. If Documentation of Medical Reason for Not Prescribing Topical Preparations (Including Over the Counter) for AOE equals No, proceed to Documentation of Patient Reason for Not Prescribing Topical Preparations (Including Over the Counter) for AOE.
9. Check Documentation of Patient Reason for Not Prescribing Topical Preparations (Including Over the Counter) for AOE:
 - a. If Documentation of Patient Reason for Not Prescribing Topical Preparations (Including Over the Counter) for AOE equals Yes, include in the Reporting Met and Performance Exclusion.
 - b. Reporting Met and Performance Exclusion is represented in the Reporting Rate and Performance Rate in the Sample Calculation listed at the end of this document. Letter b² equals 0 episodes in the Sample Calculation.
 - c. If Documentation of Patient Reason for Not Prescribing Topical Preparations (Including Over the Counter) for AOE equals No, proceed to Topical Preparations for AOE Not Prescribed, Reason Not Specified.
10. Check Topical Preparations (Including Over the Counter) for AOE Not Prescribed, Reason Not Specified:
 - a. If Topical Preparations (Including Over the Counter) for AOE Not Prescribed, Reason Not Specified equals Yes, include in the Reporting Met and Performance Not Met.
 - b. Reporting Met and Performance Not Met is represented in the Reporting Rate in the Sample Calculation listed at the end of this document. Letter c equals 2 episodes in the Sample Calculation.
 - c. If Topical Preparations (Including Over the Counter) for AOE Not Prescribed, Reason Not Specified equals No, proceed to Reporting Not Met.
11. Check Reporting Not Met:
 - a. If Reporting Not Met, the Quality Data Code or equivalent was not reported. 1 episode has been subtracted from the reporting numerator in sample calculation.

SAMPLE CALCULATIONS:

Reporting Rate=

$$\frac{\text{Performance MeT (a=4 episodes)} + \text{Performance Exclusion (b}^1 + \text{b}^2=1 \text{ episode)} + \text{Performance Not Met (c=2 episodes)}}{\text{Eligible Population / Denominator (d=8 episodes)}} = \frac{7 \text{ episodes}}{8 \text{ episodes}} = 87.50\%$$

Performance Rate=

$$\frac{\text{Performance MeT (a=4 episodes)}}{\text{Reporting Numerator (7 episodes) – Performance Exclusion (b}^1 + \text{b}^2=1 \text{ episode)}} = \frac{4 \text{ episodes}}{6 \text{ episodes}} = 66.67\%$$