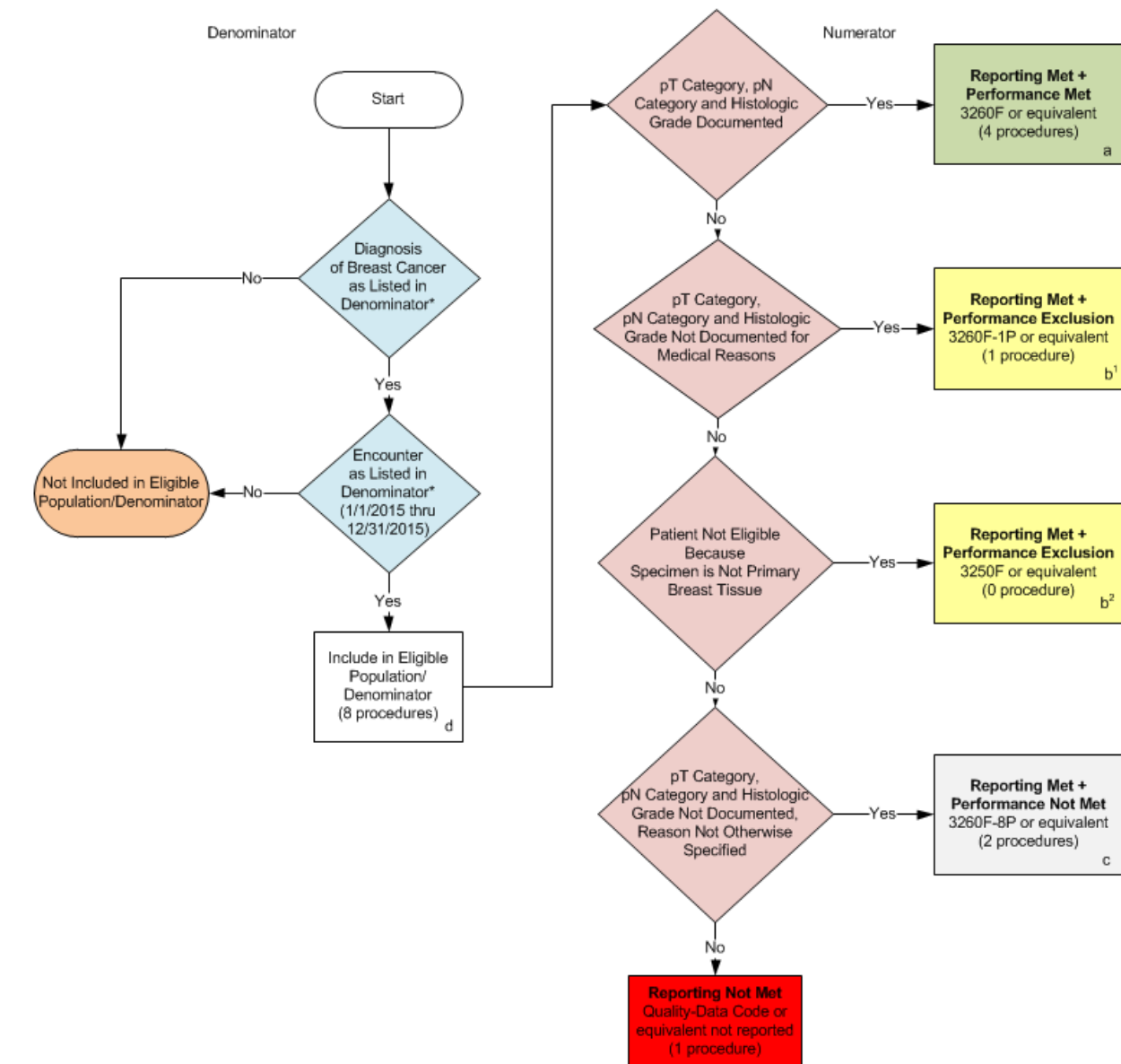


**2015 Claims Individual Measure Flow**  
**PQRS #99 NQF # 0391: Breast Cancer Resection Pathology Reporting: pT Category (Primary Tumor) and pN Category (Regional Lymph Nodes) with Histologic Grade**



**SAMPLE CALCULATIONS:**

**Reporting Rate=**

Performance Met (a=4 procedures)+Performance Exclusion (b¹+b²=1 procedure)+Performance Not Met (c=2 procedures) = 7 procedures = 87.50%  
 Eligible Population / Denominator (d=8 procedures) = 8 procedures

**Performance Rate=**

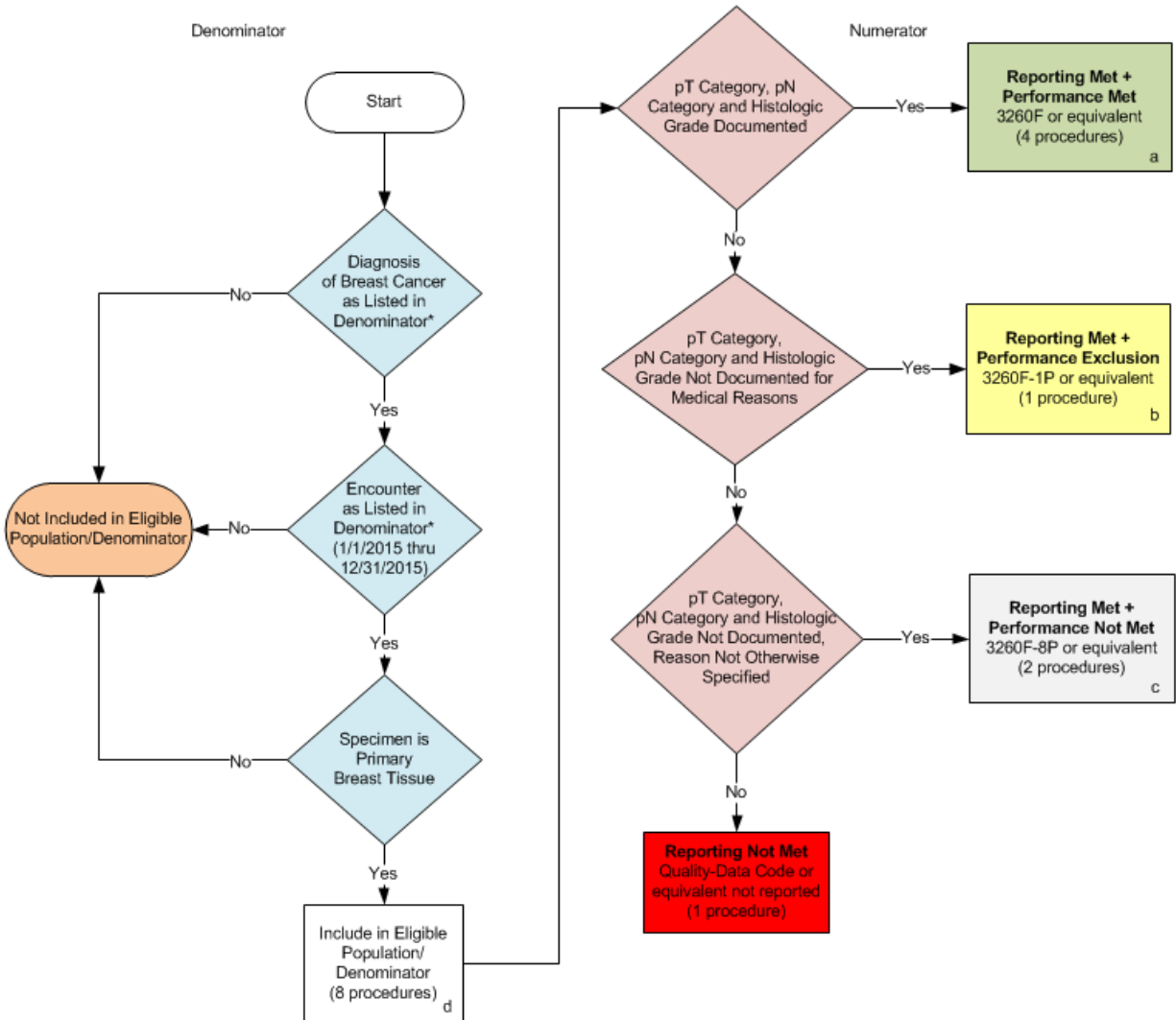
Performance Met (a=4 procedures) = 4 procedures = 66.67%  
 Reporting Numerator (7 procedures) – Performance Exclusion (b¹+b²=1 procedure) = 6 procedures

\*See the posted Measure Specification for specific coding and instructions to report this measure.

NOTE: Reporting Frequency: Procedure

CPT only copyright 2014 American Medical Association. All rights reserved.

**2015 Registry Individual Measure Flow**  
**PQRS #99 NQF # 0391: Breast Cancer Resection Pathology Reporting: pT Category (Primary Tumor) and pN Category (Regional Lymph Nodes) with Histologic Grade**



**SAMPLE CALCULATIONS:**

**Reporting Rate=**

Performance Met (a=4 procedures)+Performance Exclusion (b=1 procedure)+Performance Not Met (c=2 procedures) = 7 procedures = **87.50%**  
 Eligible Population / Denominator (d=8 procedures) = 8 procedures

**Performance Rate=**

Performance Met (a=4 procedures) = 4 procedures = **66.67%**  
 Reporting Numerator (7 procedures) – Performance Exclusion (b=1 procedure) = 6 procedures

\*See the posted Measure Specification for specific coding and instructions to report this measure.

NOTE: Reporting Frequency: Procedure

CPT only copyright 2014 American Medical Association. All rights reserved.

## 2015 Claims Individual Measure Flow

### **PQRS #99 NQF # 0391: Breast Cancer Resection Pathology Reporting: pT Category (Primary Tumor) and pN Category (Regional Lymph Nodes) with Histologic Grade**

Please refer to the specific section of the Measure Specification to identify the denominator and numerator information for use in reporting this Individual Measure.

1. Start with Denominator
2. Check Patient Diagnosis:
  - a. If Diagnosis of Breast Cancer as Listed in Denominator equals No, do not include in Eligible Patient Population. Stop Processing.
  - b. If Diagnosis of Breast Cancer as Listed in Denominator equals Yes, proceed to check Encounter Performed.
3. Check Encounter Performed:
  - a. If Encounter as listed in the denominator equals No, do not include in Eligible Patient Population. Stop Processing.
  - b. If Encounter as listed in the denominator equals Yes, include in the Eligible population.
4. Denominator Population:
  - a. Denominator Population is all Eligible Patients in the denominator. Denominator is represented as Denominator in the Sample Calculation listed at the end of this document. Letter d equals 8 procedures in the sample calculation.
5. Start Numerator
6. Check pT Category, pN Category and Histologic Grade Documented:
  - a. If pT Category, pN Category and Histologic Grade Documented equals Yes, include in Reporting Met and Performance Met.
  - b. Reporting Met and Performance Met letter is represented in the Reporting Rate and Performance Rate in the Sample Calculation listed at the end of this document. Letter a equals 4 procedures in Sample Calculation.
  - c. If pT Category, pN Category and Histologic Grade Documented equals No, proceed to pT Category, PN Category and Histologic Grade Not Documented for Medical Reasons.
7. Check pT Category, pN Category and Histologic Grade Not Documented for Medical Reasons:
  - a. If pT Category pN Category and Histologic Grade Not Documented for Medical Reasons equals Yes, include in Reporting Met and Performance Exclusion.
  - b. Reporting Met and Performance Exclusion letter is represented in the Reporting Rate and Performance Rate in the Sample Calculation listed at the end of this document. Letter b<sup>1</sup> equals 1 procedure in the Sample Calculation.
  - c. If pT Category, pN Category and Histologic Grade Not Documented for Medical Reasons equals No, proceed to OR Patient Not Eligible Because Specimen is Not Primary Breast Tissue.

8. Check OR Patient Not Eligible Because Specimen is Not Primary Breast Tissue:
  - a. If OR Patient not Eligible because Specimen is Not Primary Breast Tissue equals Yes, include in Reporting Met and Performance Exclusion.
  - b. Reporting Met and Performance Exclusion letter is represented in the Reporting Rate and Performance Rate in the Sample Calculation listed at the end of this document. Letter b<sup>2</sup> equals 0 procedures in the Sample Calculation.
  - c. If OR Patient not Eligible because Specimen is not Primary Breast Tissue equals No, proceed to pT Category, pN Category and Histologic Grade not Documented, Reason Not Otherwise Specified Category.
  
9. Check pT Category, pN Category and Histologic Grade not Documented, Reason not Otherwise Specified Category:
  - a. If pT Category, pN Category and Histologic Grade not Documented, Reason not Otherwise Specified Category equals Yes, include in the Reporting Met and Performance Not Met.
  - b. Reporting Met and Performance Not Met letter is represented in the Reporting Rate in the Sample Calculation listed at the end of this document. Letter c equals 2 procedures in the Sample Calculation.
  - c. If pT Category, pN Category and Histologic Grade not Documented, Reason not Otherwise Specified Category No, proceed to Reporting Not Met.
  
10. Check Reporting Not Met:
  - a. If Reporting Not Met equals No, Quality Data Code or equivalent not reported. 1 procedure has been subtracted from reporting numerator in the sample calculation.

#### SAMPLE CALCULATIONS:

##### Reporting Rate=

$$\frac{\text{Performance Met (a=4 procedures)} + \text{Performance Exclusion (b}^1 + \text{b}^2 = 1 \text{ procedure)} + \text{Performance Not Met (c=2 procedures)}}{\text{Eligible Population / Denominator (d=8 procedures)}} = \frac{7 \text{ procedures}}{8 \text{ procedures}} = 87.50\%$$

##### Performance Rate=

$$\frac{\text{Performance Met (a=4 procedures)}}{\text{Reporting Numerator (7 procedures) - Performance Exclusion (b}^1 + \text{b}^2 = 1 \text{ procedure)}} = \frac{4 \text{ procedures}}{6 \text{ procedures}} = 66.67\%$$

## 2015 Registry Individual Measure Flow

### **PQRS #99 NQF # 0391: Breast Cancer Resection Pathology Reporting: pT Category (Primary Tumor) and pN Category (Regional Lymph Nodes) with Histologic Grade**

Please refer to the specific section of the Measure Specification to identify the denominator and numerator information for use in reporting this Individual Measure.

1. Start with Denominator
2. Check Patient Diagnosis:
  - a. If Diagnosis of Breast Cancer as Listed in Denominator equals No, do not include in Eligible Patient Population. Stop Processing.
  - b. If Diagnosis of Breast Cancer as Listed in Denominator equals Yes, proceed to check Encounter Performed.
3. Check Encounter Performed:
  - a. If Encounter as listed in the denominator equals No, do not include in Eligible Patient Population. Stop Processing.
  - b. If Encounter as listed in the denominator equals Yes, proceed to check if Specimen is Primary Breast Tissue
4. Check Specimen is Primary Breast Tissue
  - a. If Specimen is Primary Breast Tissue equals No, do not include in Eligible Patient Population. Stop Processing.
  - b. If Specimen is Primary Breast Tissue equals Yes, include in Eligible Population
5. Denominator Population:
  - a. Denominator Population is all Eligible Patients in the denominator. Denominator is represented as Denominator in the Sample Calculation listed at the end of this document. Letter d equals 8 procedures in the sample calculation.
6. Start Numerator
7. Check pT Category, pN Category and Histologic Grade Documented:
  - a. If pT Category, pN Category and Histologic Grade Documented equals Yes, include in Reporting Met and Performance Met.
  - b. Reporting Met and Performance Met letter is represented in the Reporting Rate and Performance Rate in the Sample Calculation listed at the end of this document. Letter a equals 4 procedures in Sample Calculation.
  - c. If pT Category, pN Category and Histologic Grade Documented equals No, proceed to pT Category, PN Category and Histologic Grade Not Documented for Medical Reasons.
8. Check pT Category, pN Category and Histologic Grade Not Documented for Medical Reasons:
  - a. If pT Category pN Category and Histologic Grade Not Documented for Medical Reasons equals Yes, include in Reporting Met and Performance Exclusion.
  - b. Reporting Met and Performance Exclusion letter is represented in the Reporting Rate and Performance Rate in the Sample Calculation listed at the end of this document. Letter b<sup>1</sup> equals 1 procedure in the Sample Calculation.

- c. If pT Category, pN Category and Histologic Grade Not Documented for Medical Reasons equals No, proceed to OR Patient Not Eligible Because Specimen is Not Primary Breast Tissue.
9. Check OR Patient Not Eligible Because Specimen is Not Primary Breast Tissue:
  - a. If OR Patient not Eligible because Specimen is Not Primary Breast Tissue equals Yes, include in Reporting Met and Performance Exclusion.
  - b. Reporting Met and Performance Exclusion letter is represented in the Reporting Rate and Performance Rate in the Sample Calculation listed at the end of this document. Letter b<sup>2</sup> equals 0 procedures in the Sample Calculation.
  - c. If OR Patient not Eligible because Specimen is not Primary Breast Tissue equals No, proceed to pT Category, pN Category and Histologic Grade not Documented, Reason Not Otherwise Specified Category.
10. Check pT Category, pN Category and Histologic Grade not Documented, Reason not Otherwise Specified Category:
  - a. If pT Category, pN Category and Histologic Grade not Documented, Reason not Otherwise Specified Category equals Yes, include in the Reporting Met and Performance Not Met.
  - b. Reporting Met and Performance Not Met letter is represented in the Reporting Rate in the Sample Calculation listed at the end of this document. Letter c equals 2 procedures in the Sample Calculation.
  - c. If pT Category, pN Category and Histologic Grade not Documented, Reason not Otherwise Specified Category No, proceed to Reporting Not Met.
11. Check Reporting Not Met:
  - a. If Reporting Not Met equals No, Quality Data Code or equivalent not reported. 1 procedure has been subtracted from reporting numerator in the sample calculation.

**SAMPLE CALCULATIONS:**

**Reporting Rate=**

$$\frac{\text{Performance Met (a=4 procedures)} + \text{Performance Exclusion (b=1 procedure)} + \text{Performance Not Met (c=2 procedures)}}{\text{Eligible Population / Denominator (d=8 procedures)}} = \frac{7 \text{ procedures}}{8 \text{ procedures}} = 87.50\%$$

**Performance Rate=**

$$\frac{\text{Performance Met (a=4 procedures)}}{\text{Reporting Numerator (7 procedures) - Performance Exclusion (b=1 procedure)}} = \frac{4 \text{ procedures}}{6 \text{ procedures}} = 66.67\%$$