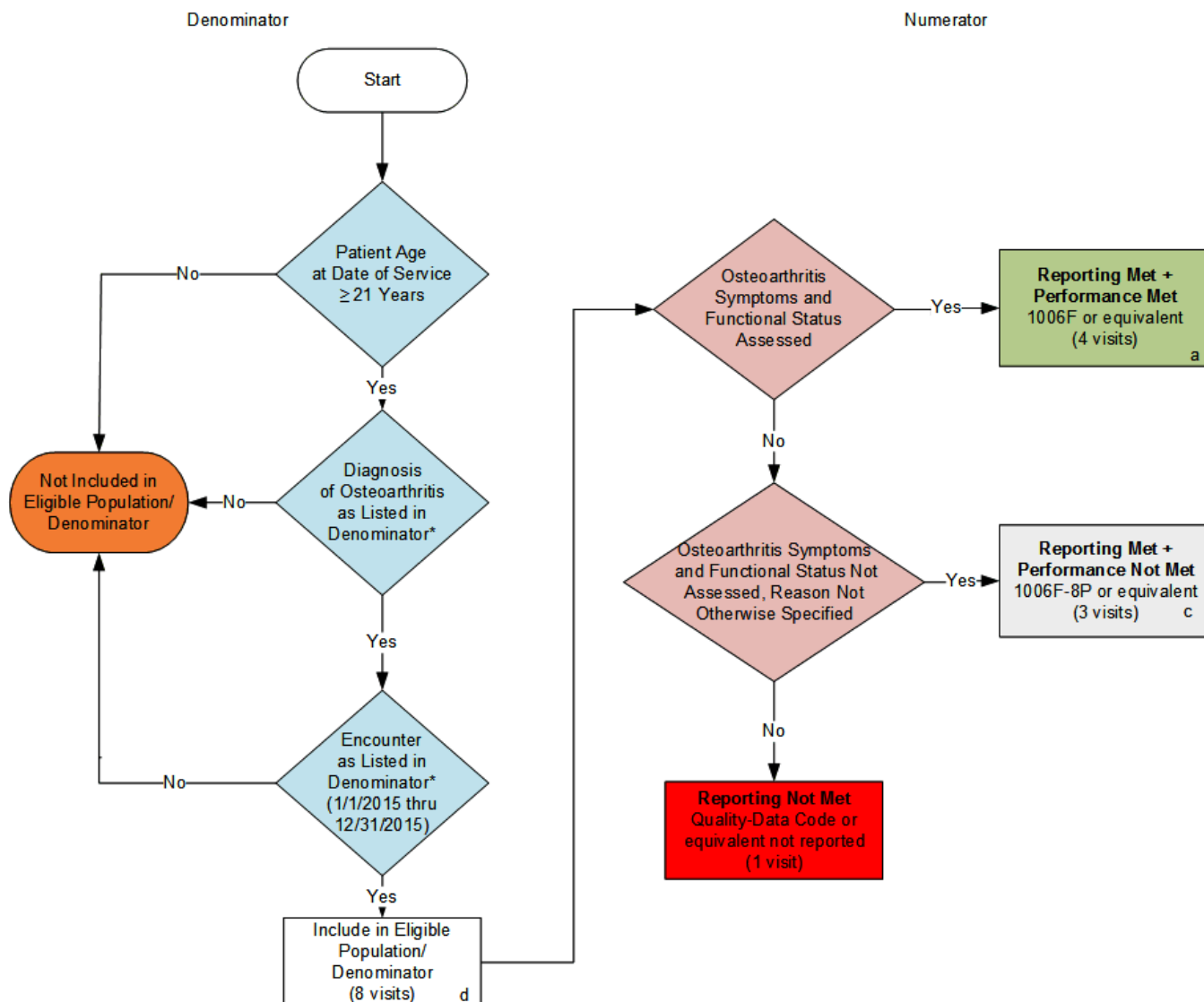


2015 Claims/Registry Individual Measure Flow **PQRS #109: Osteoarthritis (OA): Function and Pain Assessment**



SAMPLE CALCULATIONS:

Reporting Rate=

$$\frac{\text{Performance Met (a=4 visits)} + \text{Performance Not Met (c=3 visits)}}{\text{Eligible Population / Denominator (d=8 visits)}} = \frac{7 \text{ visits}}{8 \text{ visits}} = 87.50\%$$

Performance Rate=

$$\frac{\text{Performance Met (a=4 visits)}}{\text{Reporting Numerator (7 visits)}} = \frac{4 \text{ visits}}{7 \text{ visits}} = 57.14\%$$

*See the posted Measure Specification for specific coding and instructions to report this measure.

NOTE: Reporting Frequency: Visit

CPT only copyright 2011 American Medical Association. All rights reserved.

2015 Claims/Registry Individual Measure Flow
PQRS #109: Osteoarthritis (OA): Function and Pain Assessment

Please refer to the specific section of the Measure Specification to identify the denominator and numerator information for use in reporting this Individual Measure.

1. Start with Denominator
2. Check Patient Age:
 - a. If the Age is greater than or equal to 21 years of age on Date of Service and equals No during the measurement period, do not include in Eligible Patient Population. Stop Processing.
 - b. If the Age is greater than or equal to 21 years of age on Date of Service and equals Yes during the measurement period, proceed to check Patient Diagnosis.
3. Check Patient Diagnosis:
 - a. If Diagnosis of Osteoarthritis as Listed in Denominator equals No, do not include in Eligible Patient Population. Stop Processing.
 - b. If Diagnosis of Osteoarthritis as Listed in Denominator equals Yes, proceed to check Encounter Performed.
4. Check Encounter Performed:
 - a. If Encounter as Listed in the Denominator equals No, do not include in Eligible Patient Population. Stop Processing.
 - b. If Encounter as Listed in the Denominator equals Yes, include in the Eligible population.
5. Denominator Population:
 - a. Denominator population is all Eligible Patients in the denominator. Denominator is represented as Denominator in the Sample Calculation listed at the end of this document. Letter d equals 8 visits in the sample calculation.
6. Start Numerator
7. Check Osteoarthritis Symptoms and Functional Status Assessed:
 - a. If Osteoarthritis Symptoms and Functional Status Assessed equals Yes, include in Reporting Met and Performance Met.
 - b. Reporting Met and Performance Met letter is represented in the Reporting Rate and Performance Rate in the Sample Calculation listed at the end of this document. Letter a equals 4 visits in Sample Calculation.
 - c. If Osteoarthritis Symptoms and Functional Status Assessed equals No, proceed to Osteoarthritis Symptoms and Functional Status Not Assessed, Reason Not Otherwise Specified.
8. Check Osteoarthritis Symptoms and Functional Status Not Assessed, Reason Not Otherwise Specified:
 - a. If Osteoarthritis Symptoms and Functional Status Not Assessed, Reason Not Otherwise Specified equals Yes, include in Reporting Met and Performance Not Met.

- b. Reporting Met and Performance Not Met letter is represented in the Reporting Rate in the Sample Calculation listed at the end of this document. Letter c equals 3 visits in the Sample Calculation.
 - c. If Osteoarthritis Symptoms and Functional Status Not Assessed, Reason Not Otherwise Specified equals No, proceed to Reporting Not Met
- 9. Check Reporting Not Met
 - a. If Reporting Not Met equals No, Quality Data Code or equivalent not reported. 1 visit has been subtracted from the reporting numerator in the sample calculation

SAMPLE CALCULATIONS:

Reporting Rate=

$$\frac{\text{Performance Met (a=4 visits)} + \text{Performance Not Met (c=3 visits)}}{\text{Eligible Population / Denominator (d=8 visits)}} = \frac{7 \text{ visits}}{8 \text{ visits}} = 87.50\%$$

Performance Rate=

$$\frac{\text{Performance Met (a=4 visits)}}{\text{Reporting Numerator (7 visits)}} = \frac{4 \text{ visits}}{7 \text{ visits}} = 57.14\%$$