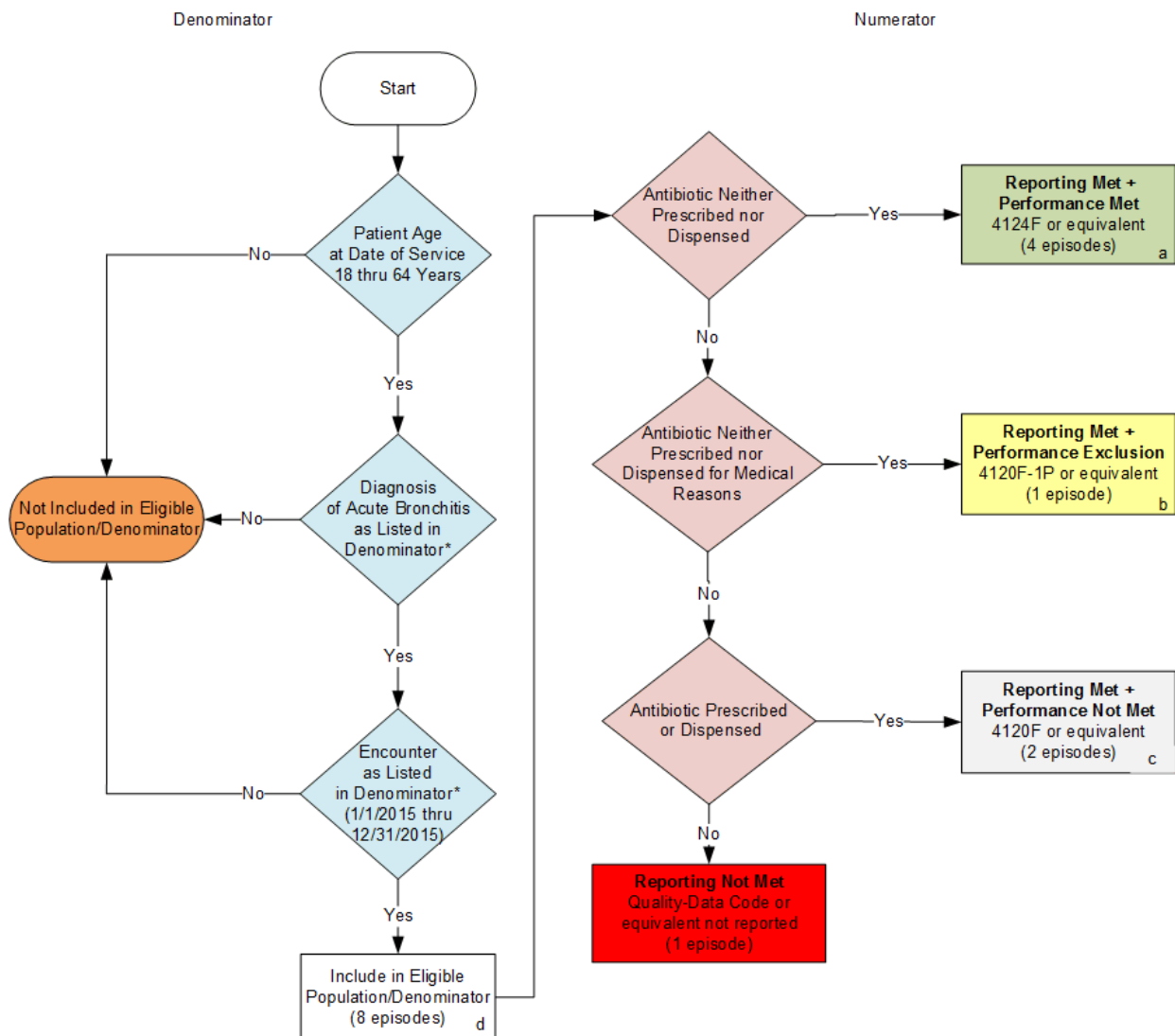


2015 Registry Individual Flow
PQRS #116 NQF #0058: Avoidance of Antibiotic Treatment in Adults with Acute Bronchitis



SAMPLE CALCULATIONS:

Reporting Rate=

$$\frac{\text{Performance Met (a=4 episodes)} + \text{Performance Exclusion (b=1 episode)} + \text{Performance Not Met (c=2 episodes)}}{\text{Eligible Population / Denominator (d=8 episodes)}} = \frac{7 \text{ episodes}}{8 \text{ episodes}} = 87.50\%$$

Performance Rate=

$$\frac{\text{Performance Met (a=4 episodes)}}{\text{Reporting Numerator (7 episodes) - Performance Exclusion (b=1 episode)}} = \frac{4 \text{ episodes}}{6 \text{ episodes}} = 66.66\%$$

*See the posted Measure Specification for specific coding and instructions to report this measure.

NOTE: Reporting Frequency: Episode

CPT only copyright 2014 American Medical Association. All rights reserved.

2015 Registry Individual Measure Flow
PQRS #116 NQF #0058: Avoidance of Antibiotic Treatment for Adults with Acute Bronchitis

Please refer to the specific section of the Measure Specification to identify the denominator and numerator information for use in reporting this Individual Measure.

1. Start with Denominator
2. Check Patient Age:
 - a. If Age equal to 18 thru 64 years of age on Date of Service equals No during the measurement period, do not include in Eligible Patient Population. Stop Processing.
 - b. If Age equal to 18 thru 64 years of age on Date of Service equals Yes during the measurement period, proceed to check Patient Diagnosis.
3. Check Patient Diagnosis:
 - a. If Diagnosis of Acute Bronchitis as Listed in the Denominator equals No, do not include in Eligible Patient Population. Stop Processing.
 - b. If Diagnosis of Acute Bronchitis as Listed in the Denominator equals Yes, proceed to check Encounter Performed.
4. Check Encounter Performed:
 - a. If Encounter as Listed in the Denominator equals No, do not include in Eligible Patient Population. Stop Processing.
 - b. If Encounter as Listed in the Denominator equals Yes, include in the Eligible population.
5. Denominator Population:
 - a. Denominator population is all Eligible Patients in the denominator. Denominator is represented as Denominator in the Sample Calculation listed at the end of this document. Letter d equals 8 visits in the sample calculation.
6. Start Numerator
7. Check Antibiotic Neither Prescribed Nor Dispensed:
 - a. If Antibiotic Neither Prescribed Nor Dispensed equals Yes, include in Reporting Met and Performance Met.
 - b. Reporting Met and Performance Met letter is represented in the Reporting Rate and Performance Rate in the Sample Calculation listed at the end of this document. Letter a equals 4 episodes in Sample Calculation.
 - c. If Antibiotic Neither Prescribed Nor Dispensed equals No, proceed to Antibiotic Neither Prescribed Nor Dispensed for Medical Reasons.
8. Check Antibiotic Neither Prescribed Nor Dispensed for Medical Reasons:
 - a. If Antibiotic Neither Prescribed Nor Dispensed for Medical Reasons equals Yes, include in Reporting Met and Performance Exclusion.
 - b. Reporting Met and Performance Exclusion letter is represented in the Reporting Rate in the Sample Calculation listed at the end of this document. Letter b equals 1 episode in the Sample Calculation.

- c. If Antibiotic Neither Prescribed Nor Dispensed for Medical Reasons equals No, proceed to Antibiotic Prescribed or Dispensed.
9. Check Antibiotic Prescribed or Dispensed:
 - a. If Antibiotic Prescribed or Dispensed equals Yes, include in the Reporting Met and Performance Not Met.
 - b. Reporting Met and Performance Not Met letter is represented in the Reporting Rate in the Sample Calculation listed at the end of this document. Letter c equals 2 episodes in the Sample Calculation.
 - c. If Antibiotic Prescribed or Dispensed equals No, proceed to Reporting Not Met.
10. Check Reporting Not Met:
 - a. If Reporting Not Met equals No, Quality Data Code or equivalent not reported. 1 episode has been subtracted from the reporting numerator in the sample calculation.

SAMPLE CALCULATIONS:

Reporting Rate=

$$\frac{\text{Performance MeT (a=4 episodes) + Performance Exclusion (b=1 episode) + Performance Not Met (c=2 episodes)}}{\text{Eligible Population / Denominator (d=8 episodes)}} = \frac{7 \text{ episodes}}{8 \text{ episodes}} = 87.50\%$$

Performance Rate=

$$\frac{\text{Performance MeT (a=4 episodes)}}{\text{Reporting Numerator (7 episodes) - Performance Exclusion (b=1 episode)}} = \frac{4 \text{ episodes}}{6 \text{ episodes}} = 66.66\%$$