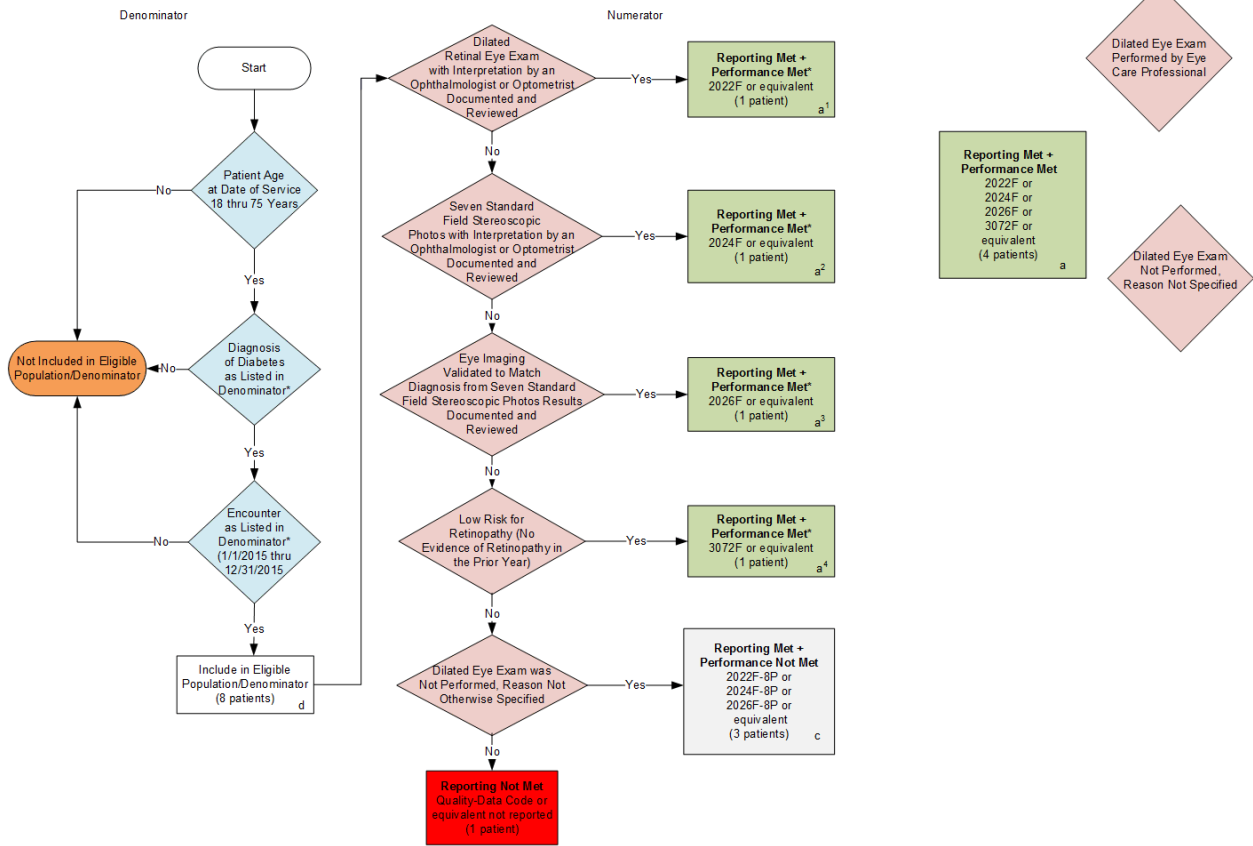


**2015 Claims/Registry Individual Measure Flow  
PQRS #117 NQF #0055: Diabetes: Eye Exam**



**SAMPLE CALCULATIONS:**

**Reporting Rate=**  

$$\frac{\text{Performance Met (a}^1 + \text{a}^2 + \text{a}^3 + \text{a}^4 = 4 \text{ patients)} + \text{Performance Not Met (c=3 patients)}}{\text{Eligible Population / Denominator (d=8 patients)}} = \frac{7 \text{ patients}}{8 \text{ patients}} = 87.50\%$$

**Performance Rate=**  

$$\frac{\text{Performance Met (a}^1 + \text{a}^2 + \text{a}^3 + \text{a}^4 = 4 \text{ patients)}}{\text{Reporting Numerator (7 patients)}} = \frac{4 \text{ patients}}{7 \text{ patients}} = 57.14\%$$

\*See the posted Measure Specification for specific coding and instructions to report this measure.

NOTE: Reporting Frequency: Patient-process

CPT only copyright 2014 American Medical Association. All rights reserved.

**2015 Claims/Registry Individual Measure Flow**  
**PQRS #117 NQF #0055: Diabetes: Eye Exam**

Please refer to the specific section of the Measure Specification to identify the denominator and numerator information for use in reporting this Individual Measure.

1. Start with Denominator
2. Check Patient Age:
  - a. If Age equal to 18 thru 75 years of age on Date of Service equals No during the measurement period, do not include in Eligible Patient Population. Stop Processing.
  - b. If Age equal to 18 thru 75 years of age on Date of Service equals Yes during the measurement period, proceed to check Patient Diagnosis.
3. Check Patient Diagnosis:
  - a. If Diagnosis of Diabetes as Listed in the Denominator equals No, do not include in Eligible Patient Population. Stop Processing.
  - b. If Diagnosis of Diabetes as Listed in the Denominator equals Yes, proceed to check Encounter Performed.
4. Check Encounter Performed:
  - a. If Encounter as Listed in the Denominator equals No, do not include in Eligible Patient Population. Stop Processing.
  - b. If Encounter as Listed in the Denominator equals Yes, include in the Eligible population.
5. Denominator Population:
  - a. Denominator population is all Eligible Patients in the denominator. Denominator is represented as Denominator in the Sample Calculation listed at the end of this document. Letter d equals 8 patients in the sample calculation.
6. Start Numerator
7. Check Dilated Retinal Eye Exam with Interpretation by an Ophthalmologist or Optometrist Documented and Reviewed:
  - a. If Dilated Retinal Eye Exam with Interpretation by an Ophthalmologist or Optometrist Documented and Reviewed equals Yes, include in Reporting Met and Performance Met.
  - b. Reporting Met and Performance Met letter is represented in the Reporting Rate and Performance Rate in the Sample Calculation listed at the end of this document. Letter a<sup>1</sup> equals 1 patient in Sample Calculation.
  - c. If Dilated Retinal Eye Exam with Interpretation by an Ophthalmologist or Optometrist Documented and Reviewed equals No, proceed to Seven Standard Field Stereoscopic Photos with Interpretation by an Ophthalmologist or Optometrist Documented and Reviewed.

8. Check Seven Standard Field Stereoscopic Photos with Interpretation by an Ophthalmologist or Optometrist Documented and Reviewed:
  - a. If Seven Standard Field Stereoscopic Photos with Interpretation by an Ophthalmologist or Optometrist Documented and Reviewed equals Yes, include in Reporting Met and Performance Met.
  - b. Reporting Met and Performance Met letter is represented in the Reporting Rate in the Sample Calculation listed at the end of this document. Letter a<sup>2</sup> equals 1 patient in the Sample Calculation.
  - c. If Seven Standard Field Stereoscopic Photos with Interpretation by an Ophthalmologist or Optometrist Documented and Reviewed equals No, proceed to Eye Imaging Validated to Match Diagnosis from Seven Standard Field Stereoscopic Photos Results Documented and Reviewed.
9. Check Eye Imaging Validated to Match Diagnosis from Seven Standard Field Stereoscopic Photos Results Documented and Reviewed:
  - a. If Eye Imaging Validated to Match Diagnosis from Seven Standard Field Stereoscopic Photos Results Documented and Reviewed equals Yes, include in the Reporting Met and Performance Met.
  - b. Reporting Met and Performance Met letter is represented in the Reporting Rate in the Sample Calculation listed at the end of this document. Letter a<sup>3</sup> equals 1 patient in the Sample Calculation.
  - c. If Eye Imaging Validated to Match Diagnosis from Seven Standard Field Stereoscopic Photos Results Documented and Reviewed equals No, proceed to Low Risk for Retinopathy (No Evidence of Retinopathy in the Prior Year).
10. Check Low Risk for Retinopathy (No Evidence of Retinopathy in the Prior Year):
  - a. If Low Risk for Retinopathy (No Evidence of Retinopathy in the Prior Year) equals Yes, include in the Reporting Met and Performance Met.
  - b. Reporting Met and Performance Met letter is represented in the Reporting Rate in the Sample Calculation listed at the end of this document. Letter a<sup>4</sup> equals 1 patient in the Sample Calculation.
  - c. If Low Risk for Retinopathy (No Evidence of Retinopathy in the Prior Year) equals No, proceed to Dilated Eye Exam was Not Performed, Reason Not Otherwise Specified.
11. Check Dilated Eye Exam was Not Performed, Reason Not Otherwise Specified:
  - a. If Dilated Eye Exam was Not Performed, Reason Not Otherwise Specified equals Yes, include in the Reporting Met and Performance Not Met.
  - b. Reporting Met and Performance Not Met letter is represented in the Reporting Rate in the Sample Calculation listed at the end of this document. Letter c equals 3 patients in the Sample Calculation.
  - c. If Dilated Eye Exam was Not Performed, Reason Not Otherwise Specified equals No, proceed to Reporting Not Met.
12. Check Reporting Not Met:
  - a. If Reporting Not Met equals No, Quality Data Code or equivalent not reported. 1 patient has been subtracted from the reporting numerator in the sample calculation.

### **SAMPLE CALCULATIONS:**

#### **Reporting Rate=**

$$\frac{\text{Performance MeT (a}^1\text{+a}^2\text{+a}^3\text{+a}^4\text{=4 patients) + Performance Not Met (c=3 patients)}}{\text{Eligible Population / Denominator (d=8 patients)}} = \frac{7 \text{ patients}}{8 \text{ patients}} = 87.50\%$$

#### **Performance Rate=**

$$\frac{\text{Performance MeT (a}^1\text{+a}^2\text{+a}^3\text{+a}^4\text{=4 patients)}}{\text{Reporting Numerator (7 patients)}} = \frac{4 \text{ patients}}{7 \text{ patients}} = 57.14\%$$