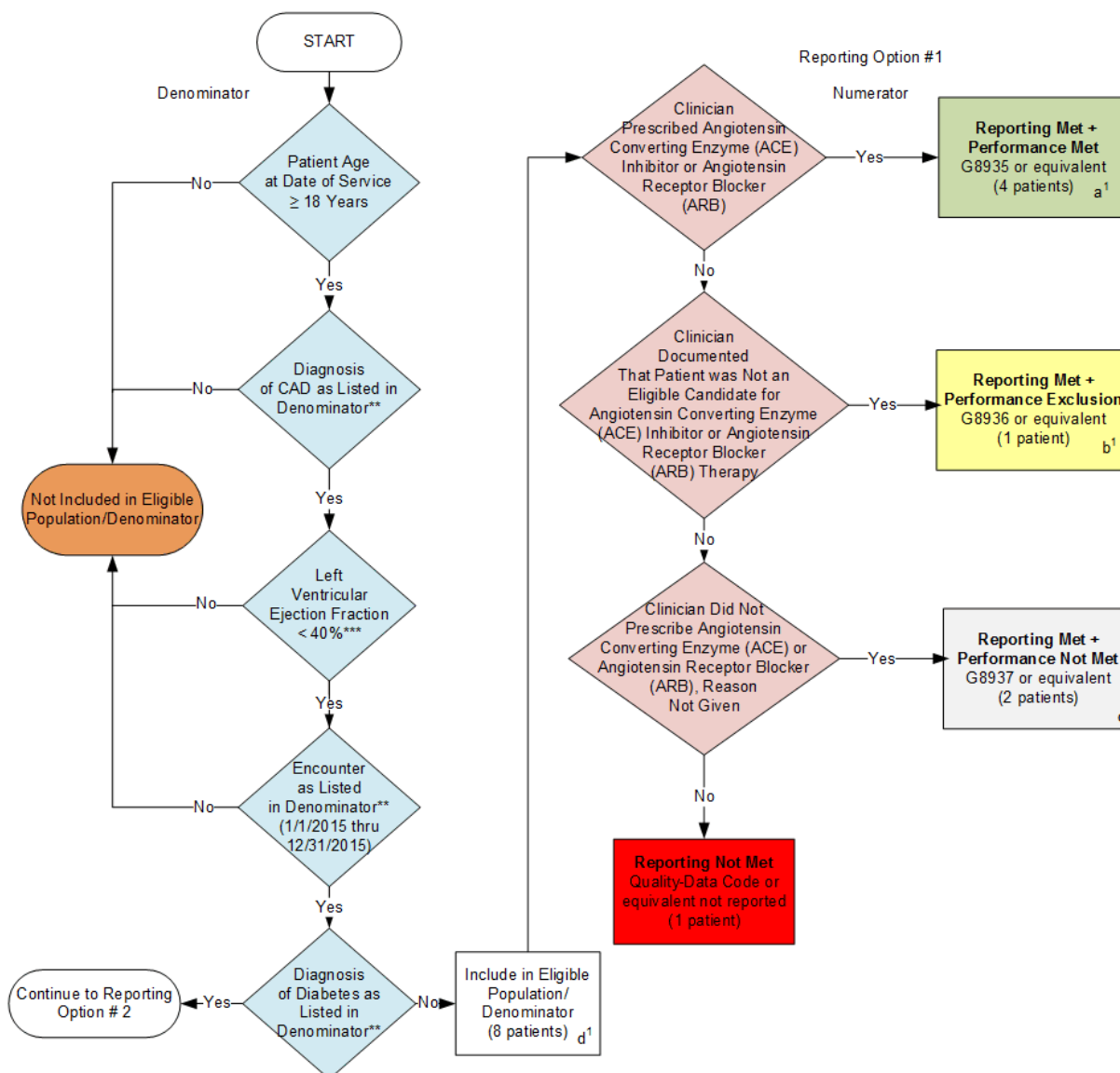


2015 Registry Individual Measure Flow
PQRS #118 NQF #0066: Coronary Artery Disease (CAD):
Angiotensin-Converting Enzyme (ACE) Inhibitor or Angiotensin Receptor Blocker (ARB)
Therapy-Diabetes or Left Ventricular Systolic Dysfunction (LVEF < 40%)



SAMPLE CALCULATIONS:

Reporting Rate=

Performance Met (a¹+a²=8 patients) + Performance Exclusion (b¹+b²=2 patients) + Performance Not Met (c¹+c²=4 patients) = 14 patients = 87.50%
 Eligible Population / Denominator (d¹+d²=16 patients) = 16 patients

Performance Rate=

Performance Met (a¹+a²=8 patients) = 8 patients = 66.67%
 Reporting Numerator (14 patients) - Performance Exclusion (b¹+b²=2 patients) = 12 patients

*This measure has two reporting options which should be aggregated to one calculation. Please refer to the sample calculation.

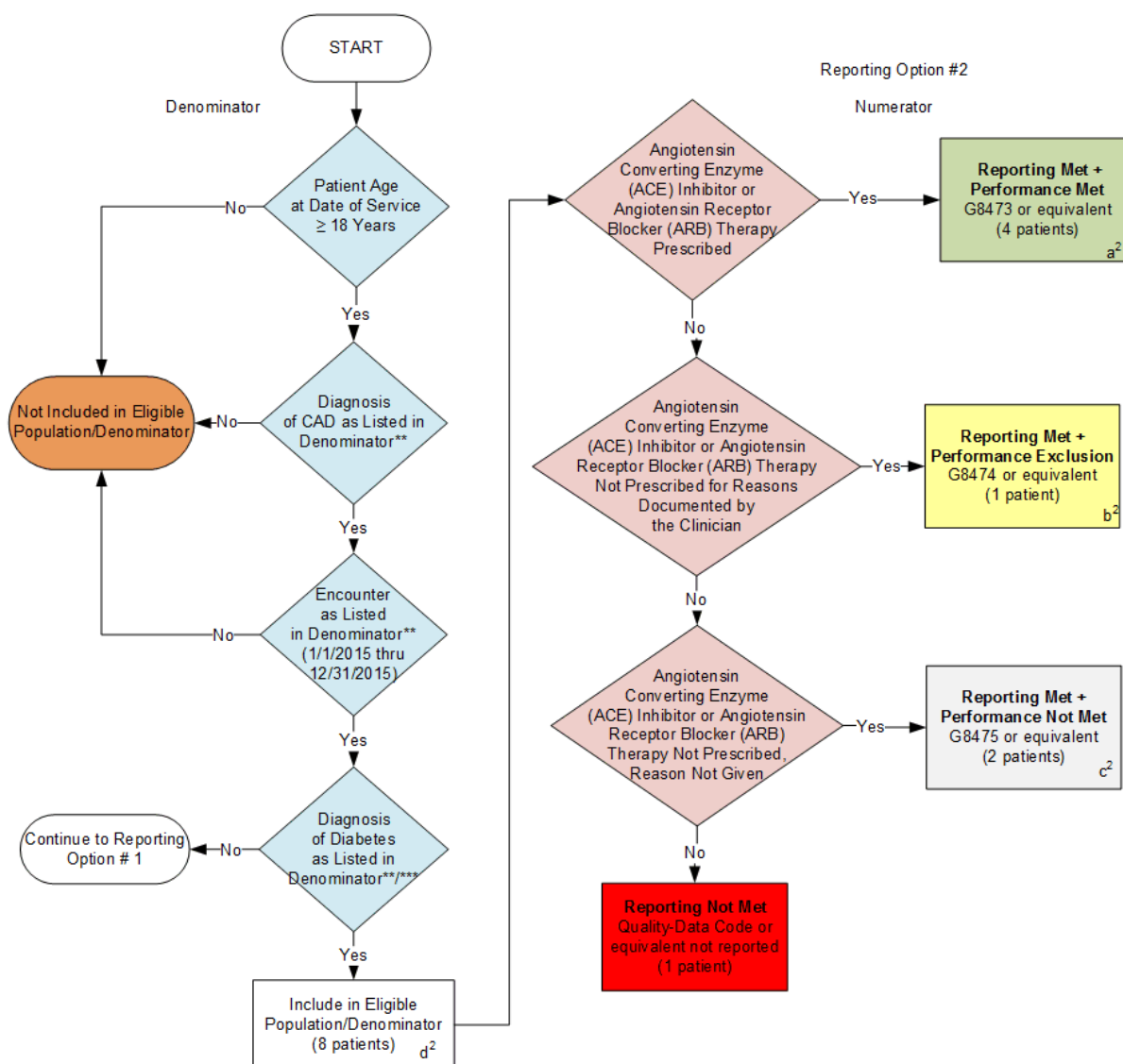
**See the posted Measure Specification for specific coding and instructions to report this measure.

***Left Ventricular Ejection Fraction < 40% has been moved to the denominator of this measure to identify the measure's intended eligible population more accurately. This flow should be followed very carefully since the eligible population in this flow differs from the one posted in the Measure Specification.

NOTE: Reporting Frequency: Patient-process

CPT only copyright 2014 American Medical Association. All rights reserved.

2015 Registry Individual Flow
PQRS #118 NQF #0066: Coronary Artery Disease (CAD):
Angiotensin-Converting Enzyme (ACE) Inhibitor or Angiotensin Receptor Blocker (ARB)
Therapy-Diabetes or Left Ventricular Systolic Dysfunction (LVSD < 40%)



SAMPLE CALCULATIONS:

Reporting Rate=

Performance Met ($a^1+a^2=8$ patients) + Performance Exclusion ($b^1+b^2=2$ patients) + Performance Not Met ($c^1+c^2=4$ patients) = 14 patients = 87.50%
 Eligible Population / Denominator ($d^1+d^2=16$ patients) = 16 patients

Performance Rate=

Performance Met ($a^1+a^2=8$ patients) = 8 patients = 66.67%
 Reporting Numerator (14 patients) – Performance Exclusion ($b^1+b^2=2$ patients) = 12 patients

*This measure has two reporting options which should be aggregated to one calculation. Please refer to the sample calculation.

**See the posted Measure Specification for specific coding and instructions to report this measure.

**If a patient is diagnosed with diabetes, reporting option #2 is appropriate for reporting on this patient.

NOTE: Reporting Frequency: Patient-process

CPT only copyright 2014 American Medical Association. All rights reserved.

2015 Registry Individual Measure Flow
PQRS #118 NQF #0066: Coronary Artery Disease (CAD): Angiotensin-Converting Enzyme (ACE) Inhibitor or Angiotensin Receptor Blocker (ARB) Therapy – Diabetes or Left Ventricular Systolic Dysfunction (LVEF < 40%)

Please refer to the specific section of the Measure Specification to identify the denominator and numerator information for use in reporting this Individual Measure.

1. Start with Denominator
2. Check Patient Age:
 - a. If the Age is greater than or equal to 18 years of age on Date of Service and equals No during the measurement period, do not include in Eligible Patient Population. Stop Processing.
 - b. If the Age is greater than or equal to 18 years of age on Date of Service and equals Yes during the measurement period, proceed to check Patient Diagnosis.
3. Check Patient Diagnosis:
 - a. If Diagnosis of CAD as Listed in the Denominator equals No, do not include in Eligible Patient Population. Stop Processing.
 - b. If Diagnosis of CAD as Listed in the Denominator equals Yes, proceed to check Left Ventricular Ejection Fraction < 40%.
4. Check Left Ventricular Ejection Fraction < 40%:
 - a. If Left Ventricular Ejection Fraction < 40% equals No, do not include in Eligible Patient Population. Stop Processing.
 - b. If Left Ventricular Ejection Fraction < 40% equals Yes, proceed to check Reporting Option #1.
5. Check Encounter Performed:
 - a. If Encounter as Listed in the Denominator equals No, do not include in Eligible Patient Population. Stop Processing.
 - b. If Encounter as Listed in the Denominator equals Yes, proceed to Diagnosis of Diabetes as Listed in the Denominator.
6. Check Diagnosis of Diabetes as Listed in the Denominator:
 - a. If Diagnosis of Diabetes as Listed in the Denominator equals Yes, proceed to Report Option #2.
 - b. If Diagnosis of Diabetes as Listed in the Denominator equals No, include in the Eligible population.
7. Denominator Population:
 - a. Denominator population is all Eligible Patients in the denominator. Denominator is represented as Denominator in the Sample Calculation listed at the end of this document. Letter d equals 8 patients in the sample calculation.
8. Start Reporting Option #1

9. Check Clinician Prescribed Angiotensin Converting Enzyme (ACE) Inhibitor or Angiotensin Receptor Blocker (ARB):
 - a. If Clinician Prescribed Angiotensin Converting Enzyme (ACE) Inhibitor or Angiotensin Receptor Blocker (ARB) equals Yes, include in Reporting Met and Performance Met.
 - b. Reporting Met and Performance Met letter is represented in the Reporting Rate and Performance Rate in the Sample Calculation listed at the end of this document. Letter a¹ equals 4 patients in Sample Calculation.
 - c. If Clinician Prescribed Angiotensin Converting Enzyme (ACE) Inhibitor or Angiotensin Receptor Blocker (ARB) equals No, proceed to Clinician Documented that Patient was Not an Eligible Candidate for Angiotensin Converting Enzyme (ACE) Inhibitor or Angiotensin Receptor Blocker (ARB) Therapy.
10. Check Clinician Documented That Patient was not an Eligible Candidate for Angiotensin Converting Enzyme (ACE) Inhibitor or Angiotensin Receptor Blocker (ARB) Therapy:
 - a. If Clinician Documented that Patient was Not an Eligible Candidate for Angiotensin Converting Enzyme (ACE) Inhibitor or Angiotensin Receptor Blocker (ARB) Therapy equals Yes, include in Reporting Met and Performance Exclusion.
 - b. Reporting Met and Performance Exclusion letter is represented in the Reporting Rate in the Sample Calculation listed at the end of this document. Letter b¹ equals 1 patient in the Sample Calculation.
 - c. If Clinician Documented that Patient was Not an Eligible Candidate for Angiotensin Converting Enzyme (ACE) Inhibitor or Angiotensin Receptor Blocker (ARB) Therapy equals No, proceed to Clinician did Not Prescribe Angiotensin Converting Enzyme (ACE) or Angiotensin Receptor Blocker (ARB), Reason Not Given.
11. Check Clinician Did Not Prescribe Angiotensin Converting Enzyme (ACE) or Angiotensin Receptor Blocker (ARB), Reason not Given:
 - a. If Clinician Did Not Prescribe Angiotensin Converting Enzyme (ACE) or Angiotensin Receptor Blocker (ARB), Reason Not Given equals Yes, include in the Reporting Met and Performance Not Met.
 - b. Reporting Met and Performance Not Met letter is represented in the Reporting Rate in the Sample Calculation listed at the end of this document. Letter c¹ equals 2 patients in the Sample Calculation.
 - c. If Clinician Did Not Prescribe Angiotensin Converting Enzyme (ACE) or Angiotensin Receptor Blocker (ARB), Reason Not Given equals No, proceed to Reporting Not Met.
12. Check Reporting Not Met:
 - a. If Reporting Not Met equals No, Quality Data Code or equivalent not reported. 1 patient has been subtracted from the reporting numerator in the sample calculation.
13. Start Reporting Option #2:

SAMPLE CALCULATIONS:

Reporting Rate=

$$\frac{\text{Performance MeT (a'+a''=8 patients) + Performance Exclusion (b'+b''=2 patients) + Performance Not Met (c'+c''=4 patients)}}{\text{Eligible Population / Denominator (d'+d''=16 patients)}} = \frac{14 \text{ patients}}{16 \text{ patients}} = 87.50\%$$

Performance Rate=

$$\frac{\text{Performance MeT (a'+a''=8 patients)}}{\text{Reporting Numerator (14 patients) – Performance Exclusion (b'+b''=2 patients)}} = \frac{8 \text{ patients}}{12 \text{ patients}} = 66.67\%$$