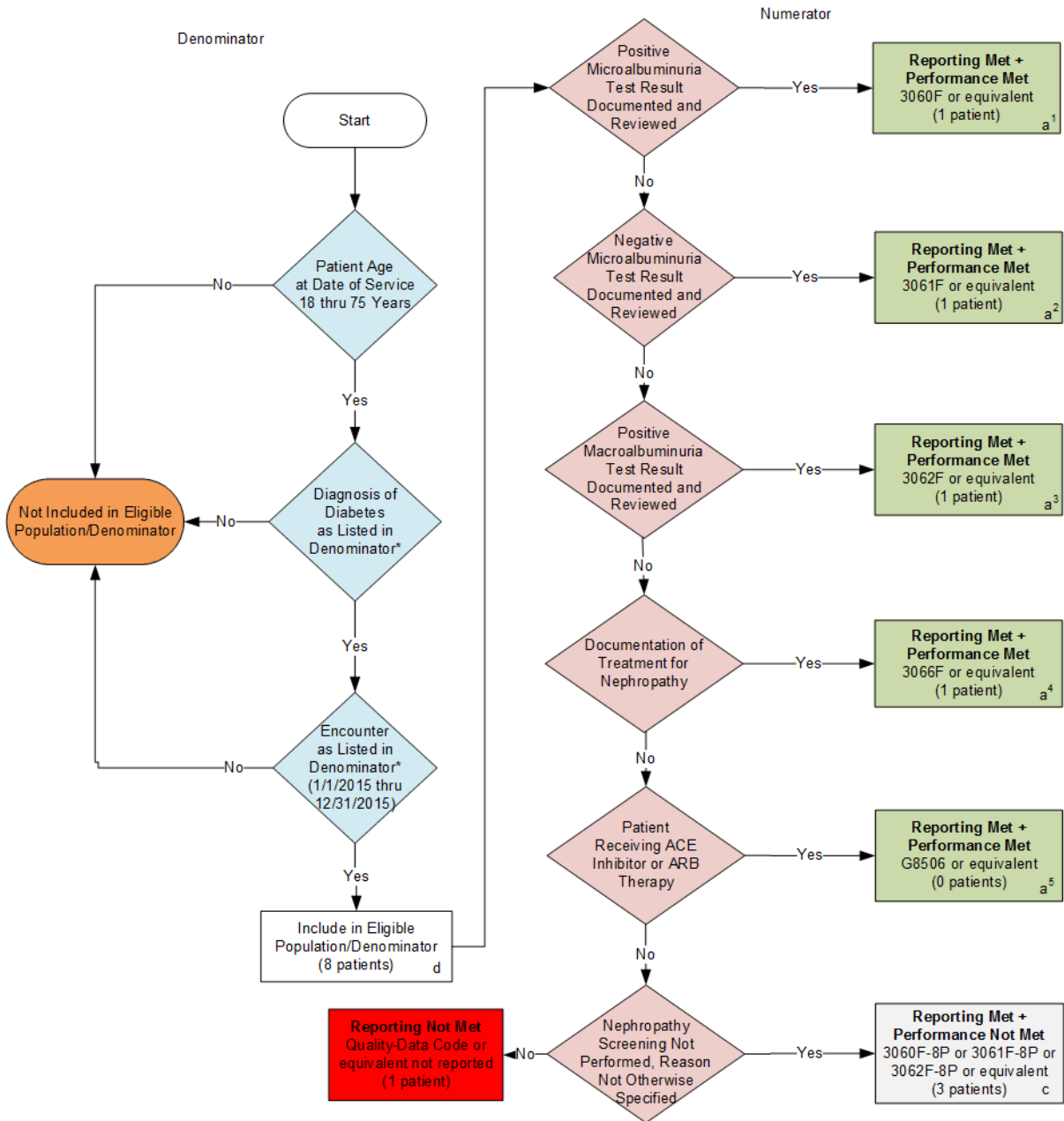


2015 Claims/Registry Individual Measure Flow
PQRS #119 NQF #0062: Diabetes: Medical Attention for Neuropathy



SAMPLE CALCULATIONS:

Reporting Rate=

Performance Met ($a^1+a^2+a^3+a^4+a^5=4$ patients) + Performance Not Met ($c=3$ patients) =
Eligible Population / Denominator ($d=8$ patients) =

$$\frac{7 \text{ patients}}{8 \text{ patients}} = 87.50\%$$

Performance Rate=

$$\frac{\text{Performance Met (a=4 patients)}}{\text{Reporting Numerator (7 patients)}} = \frac{4 \text{ patients}}{7 \text{ patients}} = 57.14\%$$

*See the posted Measure Specification for specific coding and instructions to report this measure.

NOTE: Reporting Frequency: Patient-process

CPT only copyright 2014 American Medical Association. All rights reserved.

2015 Claims/Registry Individual Measure Flow
PQRS #119 NQF #0062: Diabetes: Medical Attention for Neuropathy

Please refer to the specific section of the Measure Specification to identify the denominator and numerator information for use in reporting this Individual Measure.

1. Start with Denominator
2. Check Patient Age:
 - a. If Age equal to 18 thru 75 years of age on Date of Service equals No during the measurement period, do not include in Eligible Patient Population. Stop Processing.
 - b. If Age equal to 18 thru 75 years of age on Date of Service equals Yes during the measurement period, proceed to check Patient Diagnosis.
3. Check Patient Diagnosis:
 - a. If Diagnosis of Diabetes as Listed in the Denominator equals No, do not include in Eligible Patient Population. Stop Processing.
 - b. If Diagnosis of Diabetes as Listed in the Denominator equals Yes, proceed to check Encounter Performed.
4. Check Encounter Performed:
 - a. If Encounter as Listed in the Denominator equals No, do not include in Eligible Patient Population. Stop Processing.
 - b. If Encounter as Listed in the Denominator equals Yes, include in the Eligible population.
5. Denominator Population:
 - a. Denominator population is all Eligible Patients in the denominator. Denominator is represented as Denominator in the Sample Calculation listed at the end of this document. Letter d equals 8 patients in the sample calculation.
6. Start Numerator
7. Check Positive Microalbuminuria Test Result Documented and Reviewed:
 - a. If Microalbuminuria Test Result Documented and Reviewed equals Yes, include in Reporting Met and Performance Met.
 - b. Reporting Met and Performance Met letter is represented in the Reporting Rate and Performance Rate in the Sample Calculation listed at the end of this document. Letter a¹ equals 1 patient in Sample Calculation.
 - c. If Microalbuminuria Test Result Documented and Reviewed equals No, proceed to Negative Microalbuminuria Test Result Documented and Reviewed.
8. Check Negative Microalbuminuria Test Result Documented and Reviewed:
 - a. If Negative Microalbuminuria Test Result Documented and Reviewed equals Yes, include in Reporting Met and Performance Met.
 - b. Reporting Met and Performance Met letter is represented in the Reporting Rate in the Sample Calculation listed at the end of this document. Letter a² equals 1 patient in the Sample Calculation.
 - c. If Negative Microalbuminuria Test Result Documented and Reviewed equals No, proceed to Positive Macroalbuminuria Test Result Documented and Reviewed.

9. Check Positive Macroalbuminuria Test Result Documented and Reviewed:
 - a. If Positive Macroalbuminuria Test Result Documented and Reviewed equals Yes, include in Reporting Met and Performance Met.
 - b. Reporting Met and Performance Met letter is represented in the Reporting Rate in the Sample Calculation listed at the end of this document. Letter a³ equals 1 patient in the Sample Calculation.
 - c. If Positive Macroalbuminuria Test Result Documented and Reviewed equals No, proceed to Documentation of Treatment for Nephropathy.
10. Check Documentation of Treatment for Nephropathy:
 - a. If Documentation of Treatment for Nephropathy equals Yes, include in the Reporting Met and Performance Met.
 - b. Reporting Met and Performance Met letter is represented in the Reporting Rate in the Sample Calculation listed at the end of this document. Letter a⁴ equals 1 patient in the Sample Calculation.
 - c. If Documentation of Treatment for Nephropathy equals No, proceed to Patient Receiving ACE Inhibitor or ARB Therapy.
11. Check Patient Receiving ACE Inhibitor or ARB Therapy:
 - a. If Patient Receiving ACE Inhibitor or ARB Therapy equals Yes, include in the Reporting Met and Performance Met.
 - b. Reporting Met and Performance Met letter is represented in the Reporting Rate in the Sample Calculation listed at the end of this document. Letter a⁵ equals 0 patients in the Sample Calculation.
 - c. If Patient Receiving ACE Inhibitor or ARB Therapy equals No, proceed to Nephropathy Screening Not Performed, Reason Not Otherwise Specified.
12. Check Nephropathy Screening Not Performed, Reason Not Otherwise Specified:
 - a. If Nephropathy Screening Not Performed, Reason Not Otherwise Specified equals Yes, include in the Reporting Met and Performance Not Met.
 - b. Reporting Met and Performance Not Met letter is represented in the Reporting Rate in the Sample Calculation listed at the end of this document. Letter c equals 3 patients in the Sample Calculation.
 - c. If Nephropathy Screening Not Performed, Reason Not Otherwise Specified equals No, proceed to Reporting Not Met.
13. Check Reporting Not Met:
 - a. If Reporting Not Met equals No, Quality Data Code or equivalent not reported. 1 patient has been subtracted from the reporting numerator in the sample calculation.

SAMPLE CALCULATIONS:

Reporting Rate=

$$\frac{\text{Performance MeT (a}^1+\text{a}^2+\text{a}^3+\text{a}^4+\text{a}^5=4 \text{ patients}) + \text{Performance Not Met (c=3 patients)}}{\text{Eligible Population / Denominator (d=8 patients)}} = \frac{7 \text{ patients}}{8 \text{ patients}} = 87.50\%$$

Performance Rate=

$$\frac{\text{Performance MeT (a=4 patients)}}{\text{Reporting Numerator (7 patients)}} = \frac{4 \text{ patients}}{7 \text{ patients}} = 57.14\%$$