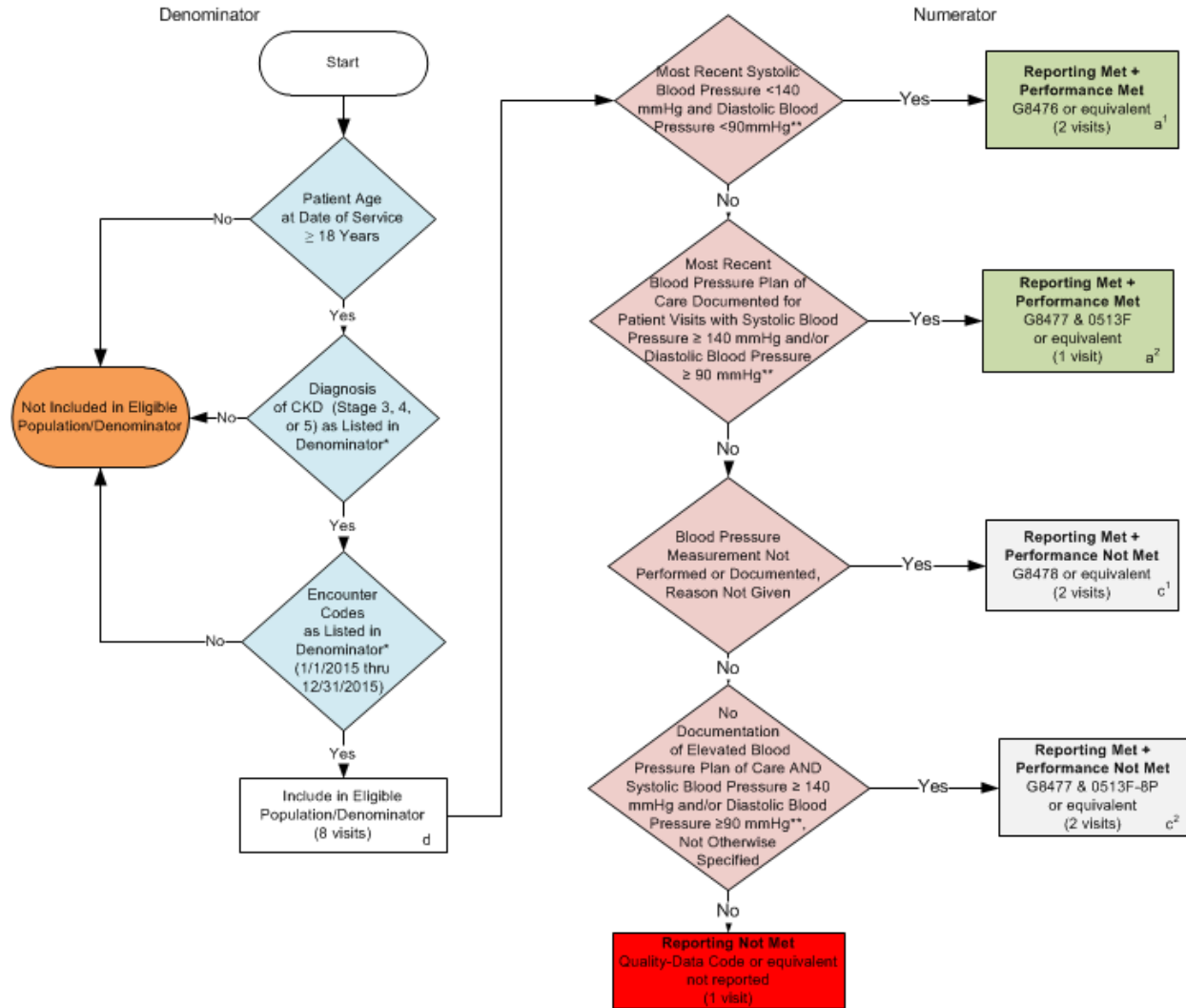


2015 Registry Individual Measure Flow PQRS #122: Adult Kidney Disease: Blood Pressure Management

*This Measure Requires the Reporting of Three Performance Rates****



* See the posted Measure Specification for specific coding and instructions to report this measure.

** If multiple blood pressure measurements are taken at a single visit, use the most recent measurement taken at that visit.

***This measure will be calculated with 3 performance rates: 1) Percentage of patient visits with blood pressure results < 140/90 mmHg; 2) Percentage of patient visits with blood pressure results ≥ 140/90 mmHg and plan of care; 3) Overall percentage of patient visits with blood pressure results < 140/90 mmHg and ≥ 140/90 mmHg with a documented plan of care

CPT only copyright 2014 American Medical Association. All rights reserved.

v1

NOTE: Reporting Frequency: Visit

2015 Registry Individual Measure Flow: Sample Calculations PQRS #122: Adult Kidney Disease: Blood Pressure Management

SAMPLE CALCULATION: Reporting Rate

Reporting Rate=

$$\frac{\text{Performance Met (a}^1\text{+a}^2\text{=3 visits) + Performance Not Met (c}^1\text{+c}^2\text{=4 visits)}}{\text{Eligible Population / Denominator (d=8 visits)}} = \frac{7 \text{ visits}}{8 \text{ visits}} = 87.50\%$$

SAMPLE CALCULATION: Performance Rate One: Blood Pressure Results < 140/90 mmHG***

Performance Rate 1=

$$\frac{\text{Performance Met (a}^1\text{= 2 visits)}}{\text{Reporting Numerator (7 visits)}} = \frac{2 \text{ visits}}{7 \text{ visits}} = 28.57\%$$

SAMPLE CALCULATION: Performance Rate Two: Blood Pressure Results ≥ 140/90 mmHG with Plan of Care***

Performance Rate 2=

$$\frac{\text{Performance Met (a}^2\text{=1 visit)}}{\text{Reporting Numerator (7 visits)}} = \frac{1 \text{ visits}}{7 \text{ visits}} = 14.29\%$$

SAMPLE CALCULATION: Overall Performance Rate***

Performance Rate 3=

$$\frac{\text{Performance Met (a}^1\text{+a}^2\text{=3 visits)}}{\text{Reporting Numerator (7 visits)}} = \frac{3 \text{ visits}}{7 \text{ visits}} = 42.86\%$$

* See the posted Measure Specification for specific coding and instructions to report this measure.

** If multiple blood pressure measurements are taken at a single visit, use the most recent measurement taken at that visit.

***This measure will be calculated with 3 performance rates: 1) Percentage of patient visits with blood pressure results < 140/90 mmHg; 2) Percentage of patient visits with blood pressure results ≥ 140/90 mmHg and plan of care; 3) Overall percentage of patient visits with blood pressure results < 140/90 mmHg and ≥ 140/90 mmHg with a documented plan of care

CPT only copyright 2014 American Medical Association. All rights reserved.

2015 Registry Individual Measure Flow
PQRS #122: Adult Kidney Disease: Blood Pressure Management

Please refer to the specific section of the Measure Specification to identify the denominator and numerator information for use in reporting this Individual Measure.

1. Start with Denominator
2. Check Patient Age:
 - a. If the Age is greater than or equal to 18 years of age at Date of Service and equals No during the measurement period, do not include in Eligible Patient Population. Stop Processing.
 - b. If the Age is greater than or equal to 18 years of age at Date of Service and equals Yes during the measurement period, proceed to check Patient Diagnosis.
3. Check Patient Diagnosis:
 - a. If Diagnosis of CKD (stage 3, 4, 5) as Listed in the Denominator equals No, do not include in Eligible Patient Population. Stop Processing.
 - b. If Diagnosis of CKD (stage 3, 4, 5) as Listed in the Denominator equals Yes, proceed to check Encounter Performed.
4. Check Encounter Performed:
 - a. If Encounter as listed in the denominator equals No, do not include in Eligible Patient Population. Stop Processing.
 - b. If Encounter as listed in the denominator equals Yes, proceed to include in Eligible Population.
5. Denominator Population:
 - a. Denominator population is all Eligible Patients in the denominator. Denominator is represented as Denominator in the Sample Calculation listed at the end of this document. Letter d equals 8 visits in the sample calculation.
6. Start Numerator
7. Check Most Recent Systolic Blood Pressure <140 mmHg and Diastolic Blood Pressure <90mmHg:
 - a. If Most Recent Systolic Blood Pressure <140 mmHg and Diastolic Blood Pressure <90mmHg equals Yes, include in Reporting Met and Performance Met.
 - b. Reporting Met and Performance Met letter is represented in the Reporting Rate and Performance Rate in the Sample Calculation listed at the end of this document. Letter a¹ equals 2 visits in Sample Calculation.
 - c. If Most Recent Systolic Blood Pressure <140 mmHg and Diastolic Blood Pressure <90mmHg equals No, proceed to Most Recent Blood Pressure Plan of Care Documented for Patient Visits with Systolic Blood Pressure ≥ 140 mmHg and/or Diastolic Blood Pressure ≥ 90 mmHg.
8. Check Most Recent Blood Pressure Plan of Care Documented for Patient Visits with Systolic Blood Pressure ≥ 140 mmHg and/or Diastolic Blood Pressure ≥ 90 mmHg:
 - a. If Most Recent Blood Pressure Plan of Care Documented for Patient Visits with Systolic Blood Pressure ≥ 140 mmHg and/or Diastolic Blood Pressure ≥ 90 mmHg equals Yes, include in Reporting Met and Performance Met.

- b. Reporting Met and Performance Met letter is represented in the Reporting Rate and Performance Rate in the Sample Calculation listed at the end of this document. Letter a² equals 1 visit in the Sample Calculation.
 - c. If Most Recent Blood Pressure Plan of Care Documented for Patient Visits with Systolic Blood Pressure ≥ 140 mmHg and/or Diastolic Blood Pressure ≥ 90 mmHg equals No, proceed to Blood Pressure Measurement Not Performed or Documented, Reason Not Given.
- 9. Check Blood Pressure Measurement Not Performed or Documented, Reason Not Given:
 - a. If Blood Pressure Measurement Not Performed or Documented, Reason Not Given equals Yes, include in the Reporting Met and Performance Not Met.
 - b. Reporting Met and Performance Not Met letter is represented in the Reporting Rate in the Sample Calculation listed at the end of this document. Letter c¹ equals 2 visits in the Sample Calculation.
 - c. If Blood Pressure Measurement Not Performed or Documented, Reason Not Given equals No, proceed to No Documentation of Elevated Blood Pressure Plan of Care AND Systolic Blood Pressure ≥ 140 mmHg and/or Diastolic Blood Pressure ≥ 90 mmHg, Not Otherwise Specified.
- 10. Check No Documentation of Elevated Blood Pressure Plan of Care AND Systolic Blood Pressure ≥ 140 mmHg and/or Diastolic Blood Pressure ≥ 90 mmHg, Not Otherwise Specified:
 - a. If No Documentation of Elevated Blood Pressure Plan of Care AND Systolic Blood Pressure ≥ 140 mmHg and/or Diastolic Blood Pressure ≥ 90 mmHg, Not Otherwise Specified equals Yes, include in the Reporting Met and Performance Not Met.
 - b. Reporting Met and Performance Not Met letter is represented in the Reporting Rate in the Sample Calculation listed at the end of this document. Letter c² equals 2 visits in the Sample Calculation.
 - c. If No Documentation of Elevated Blood Pressure Plan of Care AND Systolic Blood Pressure ≥ 140 mmHg and/or Diastolic Blood Pressure ≥ 90 mmHg, Not Otherwise Specified equals No, proceed to Reporting Not Met.
- 11. Check Reporting Not Met:
 - a. If Reporting Not Met equals No, Quality Data Code or equivalent not reported. 1 visit has been subtracted from the reporting numerator in the sample calculation.

2015 Registry Individual Measure Flow

PQRS #122: Adult Kidney Disease: Blood Pressure Management

SAMPLE CALCULATION: Reporting Rate

Reporting Rate=

$$\frac{\text{Performance Met (a}^1\text{+a}^2\text{=3 visits) + Performance Not Met (c}^1\text{+c}^2\text{=4 visits)}}{\text{Eligible Population / Denominator (d=8 visits)}} = \frac{7 \text{ visits}}{8 \text{ visits}} = 87.50\%$$

SAMPLE CALCULATION: Performance Rate One: Blood Pressure Results < 140/90 mmHG***

Performance Rate 1=

$$\frac{\text{Performance Met (a}^1\text{= 2 visits)}}{\text{Reporting Numerator (7 visits)}} = \frac{2 \text{ visits}}{7 \text{ visits}} = 28.57\%$$

SAMPLE CALCULATION: Performance Rate Two: Blood Pressure Results ≥ 140/90 mmHG with Plan of Care***

Performance Rate 2=

$$\frac{\text{Performance Met (a}^2\text{=1 visit)}}{\text{Reporting Numerator (7 visits)}} = \frac{1 \text{ visit}}{7 \text{ visits}} = 14.29\%$$

SAMPLE CALCULATION: Overall Performance Rate***

Performance Rate 3=

$$\frac{\text{Performance Met (a}^1\text{+a}^2\text{=3 visits)}}{\text{Reporting Numerator (7 visits)}} = \frac{3 \text{ visits}}{7 \text{ visits}} = 42.86\%$$

* See the posted Measure Specification for specific coding and instructions to report this measure.

** If multiple blood pressure measurements are taken at a single visit, use the most recent measurement taken at that visit.

***This measure will be calculated with 3 performance rates: 1) Percentage of patient visits with blood pressure results < 140/90 mmHg; 2) Percentage of patient visits with blood pressure results ≥ 140/90 mmHg and plan of care; 3) Overall percentage of patient visits with blood pressure results < 140/90 mmHg and ≥ 140/90 mmHg with a documented plan of care

CPT only copyright 2014 American Medical

Association. All rights reserved