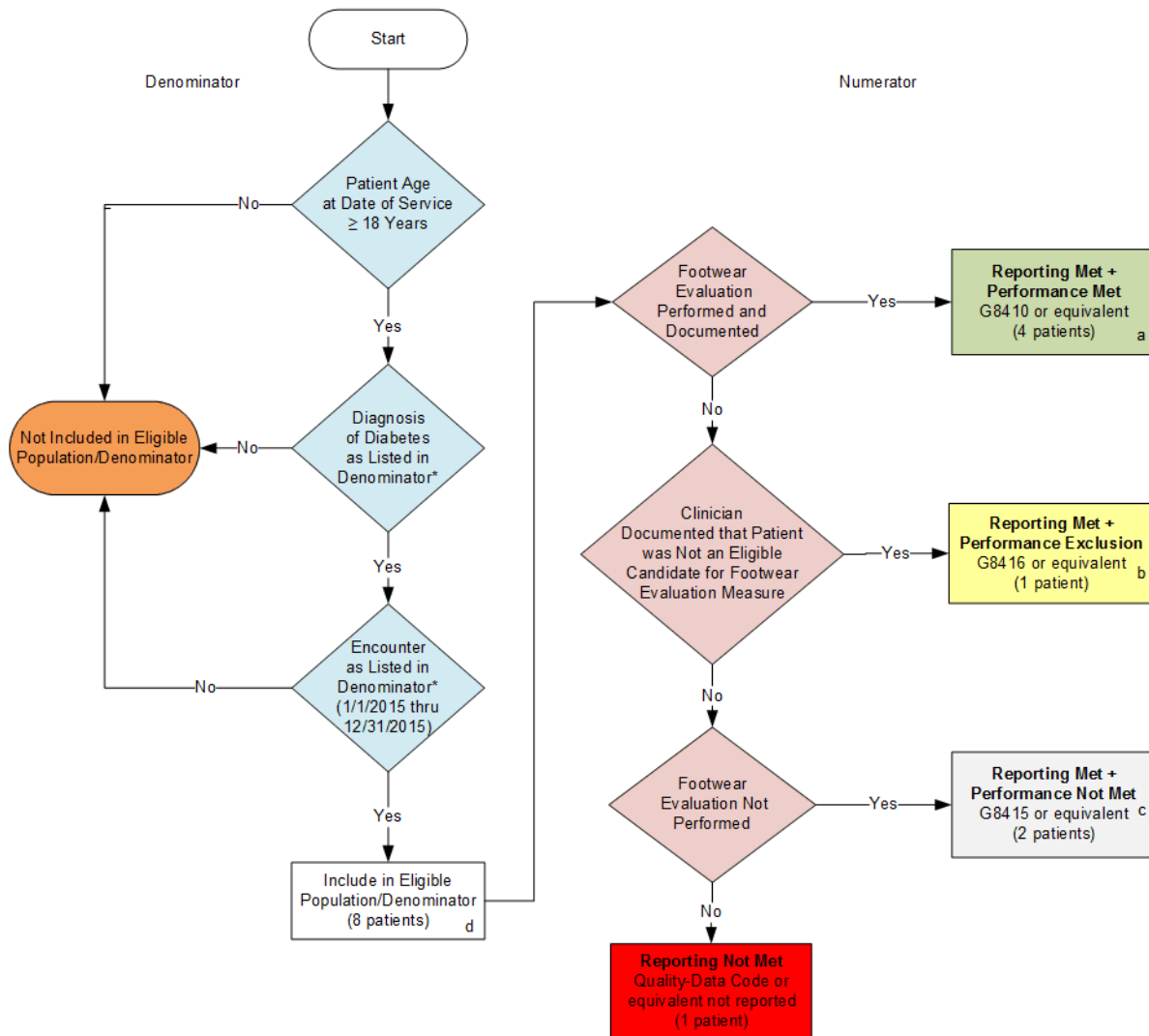


2015 Registry Individual Measure Flow
PQRS #127 NQF #0416: Diabetes Mellitus: Diabetic Foot and Ankle Care, Ulcer
Prevention – Evaluation of Footwear



SAMPLE CALCULATIONS:

Reporting Rate=

Performance Met (a=4 patients) + Performance Exclusion (b=1 patient) + Performance Not Met (c=2 patients) = 7 patients = 87.50%
 Eligible Population / Denominator (d=8 patients) = 8 patients

Performance Rate=

Performance Met (a=4 patients) = 4 patients = 66.66%
 Reporting Numerator (7 patients) - Performance Exclusion (b=1 patient) = 6 patients

*See the posted Measure Specification for specific coding and instructions to report this measure.

NOTE: Reporting Frequency: Patient-process

2015 Registry Individual Measure Flow
PQRS #127 NQF #0416: Diabetes Mellitus: Diabetic Foot and Ankle Care, Ulcer
Prevention – Evaluation of Footwear

Please refer to the specific section of the Measure Specification to identify the denominator and numerator information for use in reporting this Individual Measure.

1. Start with Denominator
2. Check Patient Age:
 - a. If the Age is greater than or equal to 18 years of age at Date of Service and equals No during the measurement period, do not include in Eligible Patient Population. Stop Processing.
 - b. If the Age is greater than or equal to 18 years of age at Date of Service and equals Yes during the measurement period, proceed to check Patient Diagnosis.
3. Check Patient Diagnosis:
 - a. If Diagnosis of Diabetes as Listed in the Denominator equals No, do not include in Eligible Patient Population. Stop Processing.
 - b. If Diagnosis of Diabetes as Listed in the Denominator equals Yes, proceed to check Encounter Performed.
4. Check Encounter Performed:
 - a. If Encounter as Listed in the Denominator equals No, do not include in Eligible Patient Population. Stop Processing.
 - b. If Encounter as Listed in the Denominator equals Yes, proceed include in Eligible Population.
5. Denominator Population:
 - a. Denominator population is all Eligible Patients in the denominator. Denominator is represented as Denominator in the Sample Calculation listed at the end of this document. Letter d equals 8 patients in the sample calculation.
6. Start Numerator
7. Check Footwear Evaluation Performed and Documented:
 - a. If Footwear Evaluation Performed and Documented equals Yes, include in Reporting Met and Performance Met.
 - b. Reporting Met and Performance Met letter is represented in the Reporting Rate and Performance Rate in the Sample Calculation listed at the end of this document. Letter a equals 4 patients in Sample Calculation.
 - c. If Footwear Evaluation Performed and Documented equals No, proceed to Clinician Documented that Patient was Not an Eligible Candidate for Footwear Evaluation Measure.
8. Check Clinician Documented that Patient was Not an Eligible Candidate for Footwear Evaluation Measure:
 - a. If Clinician Documented that Patient was Not an Eligible Candidate for Footwear Evaluation Measure equals Yes, include in Reporting Met and Performance Exclusion.

- b. Reporting Met and Performance Exclusion letter is represented in the Reporting Rate and Performance Rate in the Sample Calculation listed at the end of this document. Letter b equals 1 patient in the Sample Calculation.
 - c. If Clinician Documented that Patient was Not an Eligible Candidate for Footwear Evaluation Measure equals No, proceed to Footwear Evaluation Not Performed.
9. Check Footwear Evaluation Not Performed:
 - a. If Footwear Evaluation Not Performed equals Yes, include in Reporting Met and Performance Not Met.
 - b. Reporting Met and Performance Not Met letter is represented in the Reporting Rate and Performance Rate in the Sample Calculation listed at the end of this document. Letter c equals 2 patients in the Sample Calculation.
 - c. If Footwear Evaluation Not Performed equals No, proceed to Reporting Not Met.
10. Check Reporting Not Met:
 - a. If Reporting Not Met equals No, Quality Data Code or equivalent not reported. 1 patient has been subtracted from the reporting numerator in the sample calculation.

SAMPLE CALCULATIONS:

Reporting Rate=

$$\frac{\text{Performance MeT (a=4 patients) + Performance Exclusion (b=1 patient) + Performance Not Met (c=2 patients)}}{\text{Eligible Population / Denominator (d=8 patients)}} = \frac{7 \text{ patients}}{8 \text{ patients}} = 87.50\%$$

Performance Rate=

$$\frac{\text{Performance MeT (a=4 patients)}}{\text{Reporting Numerator (7 patients) | Performance Exclusion (b=1 patient)}} = \frac{4 \text{ patients}}{6 \text{ patients}} = 66.66\%$$