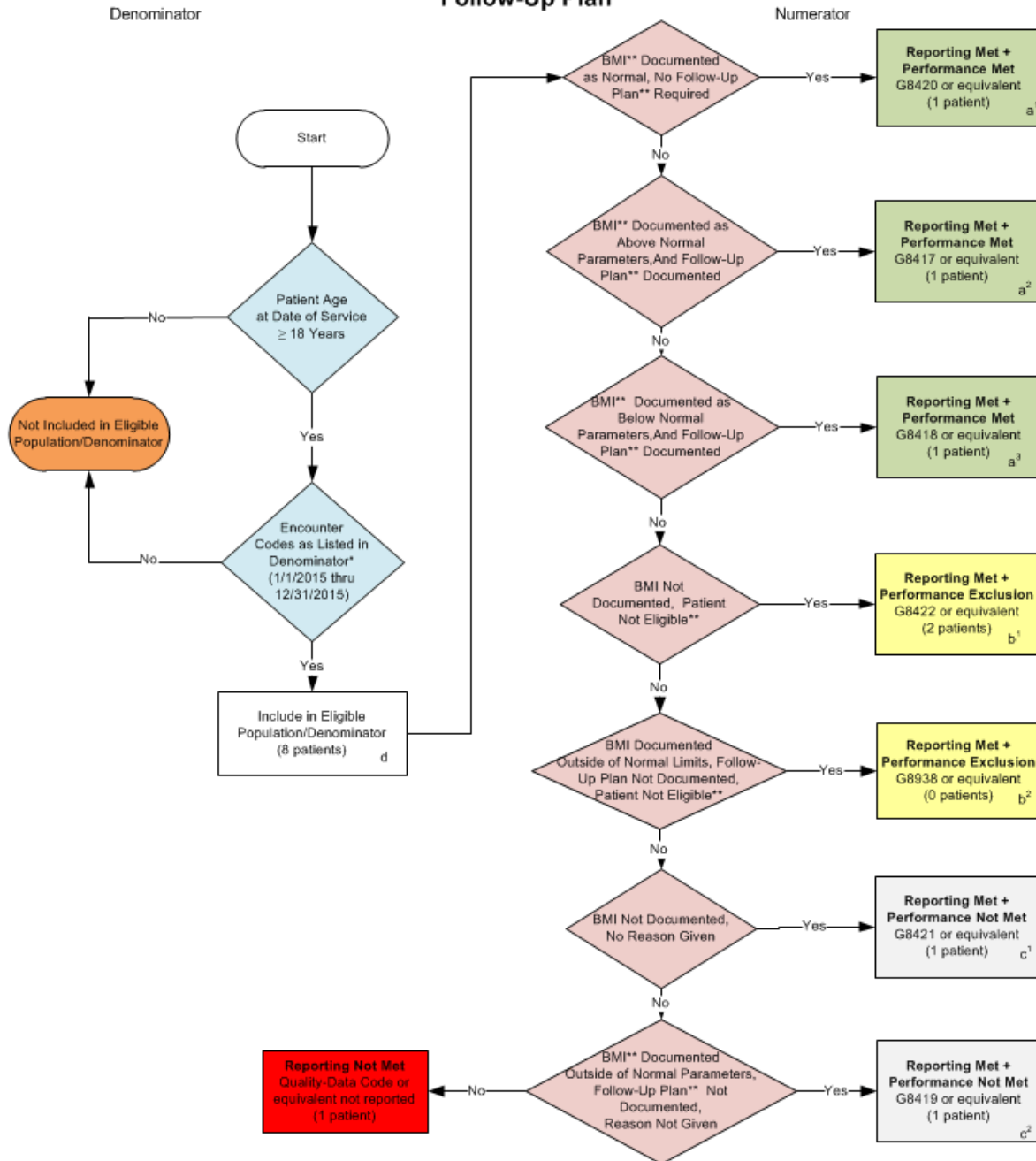


**2015 Claims/Registry Individual Measure Flow**  
**PQRS #128 NQF #0421: Preventive Care and Screening: Body Mass Index (BMI) Screening and Follow-Up Plan**



**SAMPLE CALCULATIONS:**

**Reporting Rate=**

Performance Met (a¹+a²+a³=3 patients) + Performance Exclusion (b¹+b²=2 patients) + Performance Not Met (c¹+c²=2 patients) = 7 patients = 87.50%  
 Eligible Population / Denominator (d=8 patients) = 8 patients

**Performance Rate=**

Performance Met (a¹+a²+a³=3 patients) = 3 patients = 60.00%  
 Reporting Numerator (7 patients) – Performance Exclusion (b¹+b²=2 patients) = 5 patients

\* See the posted Measure Specification for specific coding and instructions to report this measure.

\*\* See the posted Measure Specification for specific BMI and follow-up plan definitions, as well as eligibility exclusion criteria for this measure.

NOTE: Reporting Frequency: Patient-Intermediate

CPT only copyright 2014 American Medical Association. All rights reserved v1

**2015 Claims/Registry Individual Measure Flow**  
**PQRS #128 NQF #0421: Preventive Care and Screening: Body Mass Index (BMI)**  
**Screening and Follow-Up Plan**

Please refer to the specific section of the Measure Specification to identify the denominator and numerator information for use in reporting this Individual Measure.

1. Start with Denominator
2. Check Patient Age:
  - a. If the Age is greater than or equal to 18 years of age on Date of Service and equals No during the measurement period, do not include in Eligible Patient Population. Stop Processing.
  - b. If the Age is greater than or equal to 18 years of age on Date of Service and equals Yes during the measurement period, proceed to check Encounter Performed.
3. Check Encounter Performed:
  - a. If Encounter as Listed in the Denominator equals No, do not include in Eligible Patient Population. Stop Processing.
  - b. If Encounter as Listed in the Denominator equals Yes, include in the Eligible population.
4. Denominator Population
  - a. Denominator population is all Eligible Patients in the denominator. Denominator is represented as Denominator in the Sample Calculation listed at the end of this document. Letter d equals 8 patients in the sample calculation.
5. Start Numerator
6. Check BMI\*\* Documented as Normal, No Follow-Up Plan\*\* Required:
  - a. If BMI\*\* Documented as Normal, No Follow-Up Plan\*\* Required equals Yes, include in Reporting Met and Performance Met.
  - b. Reporting Met and Performance Met letter is represented in the Reporting Rate and Performance Rate in the Sample Calculation listed at the end of this document. Letter a<sup>1</sup> equals 1 patient in Sample Calculation.
  - c. If BMI\*\* Documented as Normal, No Follow-Up Plan\*\* Required equals No, proceed to check BMI\*\* Documented as Above Normal Parameters, And Follow-Up Plan\*\* Documented.
7. Check BMI\*\* Documented as Above Normal Parameters, And Follow-Up Plan\*\* Documented:
  - a. If BMI\*\* Documented as Above Normal Parameters, And Follow-Up Plan\*\* Documented equals Yes, include in Reporting Met and Performance Met.
  - b. Reporting Met and Performance Met letter is represented in the Reporting Rate and Performance Rate in the Sample Calculation listed at the end of this document. Letter a<sup>2</sup> equals 1 patient in Sample Calculation.
  - c. If BMI\*\* Documented as Above Normal Parameters, And Follow-Up Plan\*\* Documented equals No, proceed to check BMI\*\* Documented as Below Normal Parameters, And Follow-Up Plan\*\* Documented.

8. Check BMI\*\* Documented as Below Normal Parameters, And Follow-Up Plan\*\* Documented:
  - a. If BMI\*\* Documented as Below Normal Parameters, And Follow-up Plan\*\* Documented equals Yes, include in reporting met and performance met.
  - b. Reporting Met and Performance Met letter is represented in the Reporting Rate and Performance Rate in the Sample Calculation listed at the end of this document. Letter a<sup>3</sup> equals 1 patient in Sample Calculation.
  - c. If BMI\*\* Documented as Below Normal Parameters, And Follow-Up Plan\*\* Documented equals No, proceed to check BMI Not Documented, Patient Not Eligible\*\*.
9. Check BMI Not Documented, Patient Not Eligible\*\*:
  - a. If BMI Not Documented, Patient Not Eligible\*\* equals Yes, include in Reporting Met and Performance Exclusion.
  - b. Reporting Met and Performance Exclusion letter is represented in the Reporting Rate and Performance Rate in the Sample Calculation listed at the end of this document. Letter b<sup>1</sup> equals 2 patients in Sample Calculation.
  - c. If BMI Not Documented, Patient Not Eligible\*\* equals No, proceed to check BMI Documented Outside of Normal Limits, Follow-Up Plan Not Documented, Patient Not Eligible\*\*.
10. Check BMI Documented Outside of Normal Limits, Follow-Up Plan Not Documented, Patient Not Eligible\*\*
  - a. If BMI Documented Outside of Normal Limits, Follow-Up Plan Not Documented, Patient Not Eligible equals Yes, include in Reporting Met and Performance Exclusion.
  - b. Reporting Met and Performance Exclusion letter is represented in the Reporting Rate and Performance Rate in the Sample Calculation listed at the end of this document. Letter b<sup>2</sup> equals 0 patients in Sample Calculation.
  - c. If BMI Documented Outside of Normal Limits, Follow-Up Plan Not Documented, Patient Not Eligible equals No, proceed to check BMI Not Documented, No Reason Given.
11. Check BMI Not Documented, No Reason Given:
  - a. If BMI Not Documented, No Reason Given equals Yes, include in Reporting Met and Performance Not Met.
  - b. Reporting Met and Performance Not Met letter is represented in the Reporting Rate in the Sample Calculation listed at the end of this document. Letter c<sup>1</sup> equals 1 patient in the Sample Calculation.
  - c. If BMI Not Documented, No Reason Given equals No, proceed to check BMI\*\* Documented Outside of Normal Parameters, Follow-Up Plan\*\* Not Documented, Reason Not Given.
12. Check BMI\*\* Documented Outside of Normal Parameters, Follow-Up Plan\*\* Not Documented, Reason Not Given:
  - a. If BMI\*\* Documented Outside of Normal Parameters, Follow-up Plan\*\* Not Documented, Reason Not Given equals Yes, include in Reporting Met and Performance Not Met.

- b. Reporting Met and Performance Not Met letter is represented in the Reporting Rate in the Sample Calculation listed at the end of this document. Letter c<sup>2</sup> equals 1 patient in the Sample Calculation.  
If BMI\*\* Documented Outside of Normal Parameters, Follow-up Plan\*\* Not Documented, Reason Not Given equals No, proceed to Reporting Not Met.

13. Check Reporting Not Met

- a. If Reporting Not Met equals No, Quality Data Code or equivalent not reported. 1 patient has been subtracted from the reporting numerator in the sample calculation.

**SAMPLE CALCULATIONS:**

**Reporting Rate=**

$\frac{\text{Performance Met (a}^1 + a^2 + a^3 = 3 \text{ patients}) + \text{Performance Exclusion (b}^1 + b^2 = 2 \text{ patients}) + \text{Performance Not Met (c}^1 + c^2 = 2 \text{ patients})}{\text{Eligible Population / Denominator (d=8 patients)}} = \frac{7 \text{ patients}}{8 \text{ patients}} = 87.50\%$

**Performance Rate=**

$\frac{\text{Performance Met (a}^1 + a^2 + a^3 = 3 \text{ patients})}{\text{Reporting Numerator (7 patients) - Performance Exclusion (b}^1 + b^2 = 2 \text{ patients)}} = \frac{3 \text{ patients}}{5 \text{ patients}} = 60.00\%$