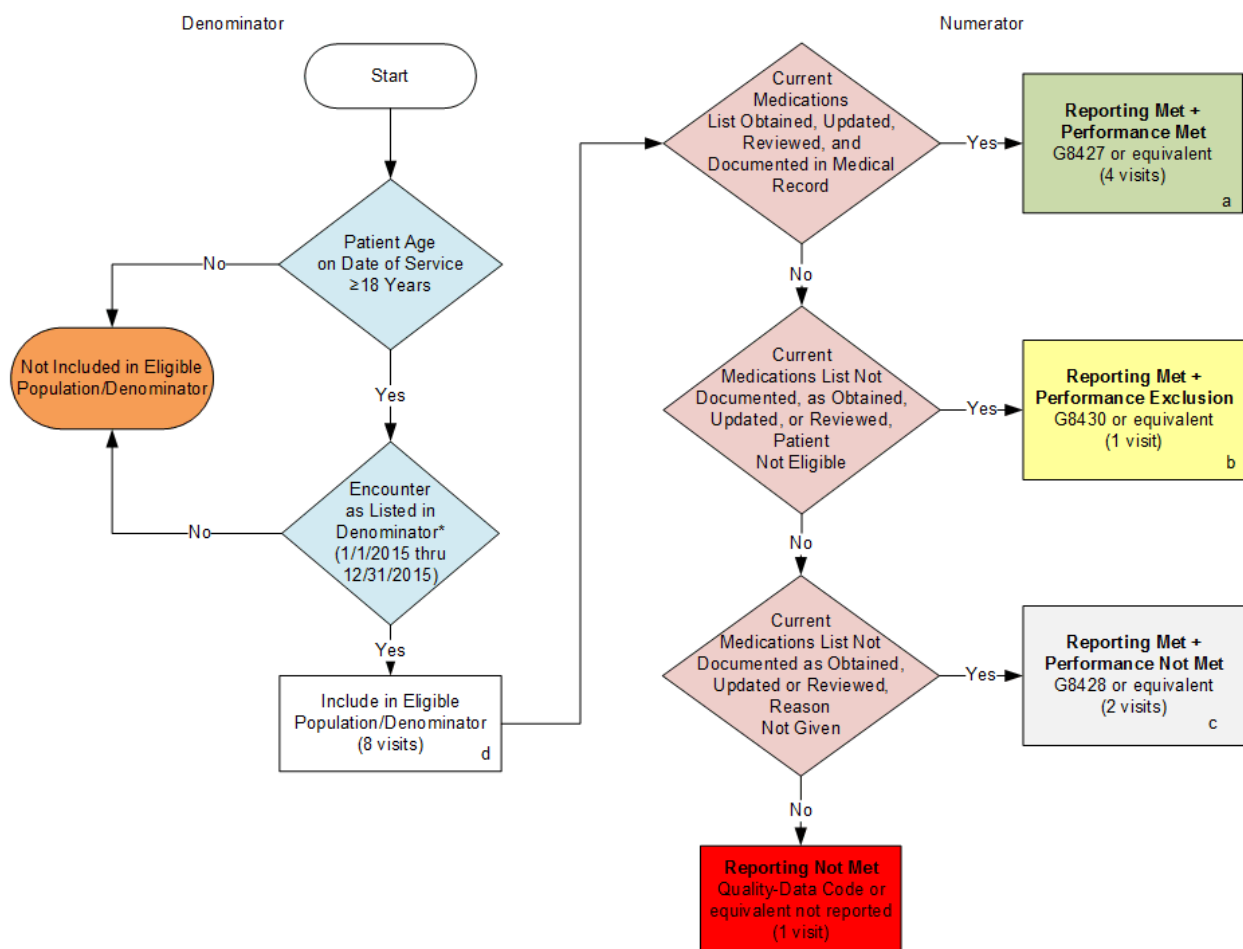


2015 Claims/Registry Individual Measure Flow
PQRS #130 NQF #0419: Documentation of Current Medications in the Medical Record



SAMPLE CALCULATIONS:

Reporting Rate=

Performance Met (a=4 visits) + Performance Exclusion (b=1 visit) + Performance Not Met (c=2 visits) = 7 visits = 87.50%
 Eligible Population / Denominator (d=8 visits) = 8 visits

Performance Rate=

Performance Met (a=4 visits) = 4 visits = 66.67%
 Reporting Numerator (7 visits) – Performance Exclusion (b=1 visit) = 6 visits

*See the posted Measure Specification for specific coding and instructions to report this measure.

NOTE: Reporting Frequency: Visit

CPT only copyright 2014 American Medical Association. All rights reserved.

2015 Claims/Registry Individual Measure Flow
PQRS #130 NQF #0419: Documentation of Current Medications in the Medical Record

Please refer to the specific section of the Measure Specification to identify the denominator and numerator information for use in reporting this Individual Measure.

1. Start with Denominator
2. Check Patient Age:
 - a. If the Age is greater than or equal to 18 years of age at Date of Service equals No during the measurement period, do not include in Eligible Patient Population. Stop Processing.
 - b. If the Age is greater than or equal to 18 years of age at Date of Service equals Yes during the measurement period, proceed to check Encounter Performed.
3. Check Encounter Performed:
 - a. If Encounter as Listed in the Denominator equals No, do not include in Eligible Patient Population. Stop Processing.
 - b. If Encounter as Listed in the Denominator equals Yes, include in the Eligible population.
4. Denominator Population:
 - a. Denominator population is all Eligible Patients in the denominator. Denominator is represented as Denominator in the Sample Calculation listed at the end of this document. Letter d equals 8 visits in the sample calculation.
5. Start Numerator
6. Check Current Medications List Obtained, Updated, Reviewed and Documented in Medical Record:
 - a. If Current Medications List Obtained, Updated, Reviewed and Documented in Medical Record equals Yes, include in Reporting Met and Performance Met.
 - b. Reporting Met and Performance Met letter is represented in the Reporting Rate and Performance Rate in the Sample Calculation listed at the end of this document. Letter a equals 4 visits in Sample Calculation.
 - c. If Current Medications List Obtained, Updated, Reviewed and Documented in Medical Record equals No, proceed to check Current Medications List Not Documented as Obtained, Updated or Reviewed, Patient Not Eligible.
7. Check Current Medications List Not Documented as Obtained, Updated or Reviewed, Patient Not Eligible:
 - a. If Current Medications List Not Documented as Obtained, Updated or Reviewed, Patient Not Eligible equals Yes, include in Reporting Met and Performance Exclusion.
 - b. Reporting Met and Performance Exclusion letter is represented in the Reporting Rate and Performance Rate in the Sample Calculation listed at the end of this document. Letter b equals 1 visit in Sample Calculation.
 - c. If Current Medications List Not Documented as Obtained, Updated or Reviewed, Patient Not Eligible equals No, proceed to check Current Medications List Not Documented as Obtained, Updated or Reviewed, Reason Not Given.

8. Check Current Medications List Not Documented as Obtained, Updated or Reviewed, Reason Not Given:
 - a. If Current Medications List Not Documented as Obtained, Updated or Reviewed, Reason Not Given equals Yes, include in Reporting Met and Performance Not Met.
 - b. Reporting Met and Performance Not Met letter is represented in the Reporting Rate in the Sample Calculation listed at the end of this document. Letter c equals 2 visits in the Sample Calculation.
 - c. If Current Medications List Not Documented as Obtained, Updated or Reviewed, Reason Not Given equals No, proceed to check Reporting Not Met.
9. Check Reporting Not Met:
 - a. If Reporting Not Met, the Quality Data Code or equivalent was not reported. 1 visit has been subtracted from the reporting numerator in the sample calculation.

SAMPLE CALCULATIONS:

Reporting Rate=

$$\frac{\text{Performance Met (a=4 visits)} + \text{Performance Exclusion (b=1 visit)} + \text{Performance Not Met (c=2 visits)}}{\text{Eligible Population / Denominator (d=8 visits)}} = \frac{7 \text{ visits}}{8 \text{ visits}} = 87.50\%$$

Performance Rate=

$$\frac{\text{Performance Met (a=4 visits)}}{\text{Reporting Numerator (7 visits) - Performance Exclusion (b=1 visit)}} = \frac{4 \text{ visits}}{6 \text{ visits}} = 66.67\%$$