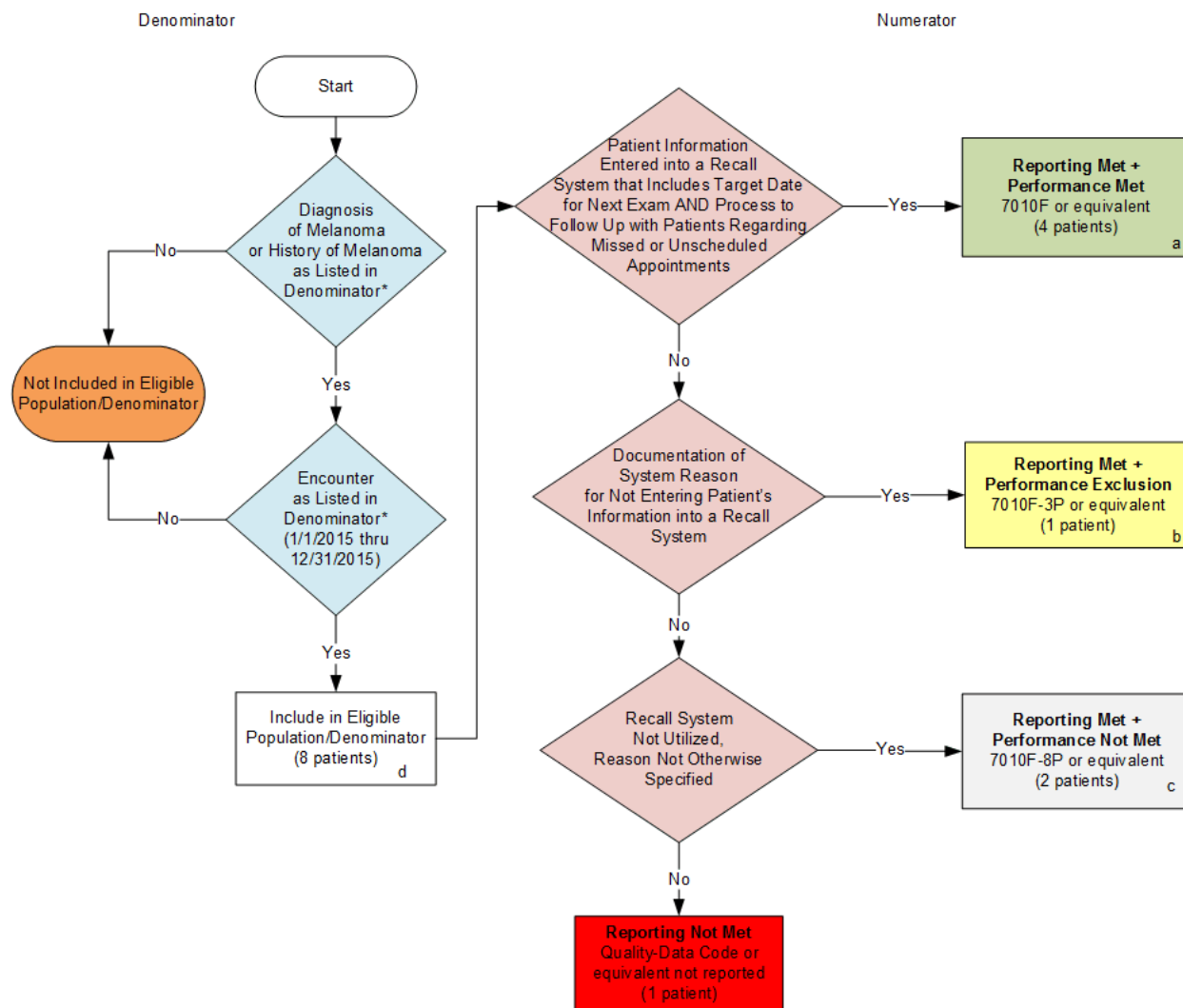


2015 Registry Individual Measure Flow
PQRS #137 NQF #0650: Melanoma: Continuity of Care – Recall System



SAMPLE CALCULATIONS:

Reporting Rate=

Performance Met (a=4 patients) + Performance Exclusion (b=1 patient) + Performance Not Met (c=2 patients) =
 Eligible Population / Denominator (d=8 patients) =

7 patients = 87.50%
 8 patients

Performance Rate=

Performance Met (a=4 patients) = 4 patients = 66.66%
 Reporting Numerator (7 patients) - Performance Exclusion (b=1 patient) = 6 patients

*See the posted Measure Specification for specific coding and instructions to report this measure.
 NOTE: Reporting Frequency: Patient-process

CPT only copyright 2014 American Medical Association. All rights reserved.

2015 Registry Individual Measure Flow
PQRS #137 NQF #0650: Melanoma: Continuity of Care – Recall System

Please refer to the specific section of the Measure Specification to identify the denominator and numerator information for use in reporting this Individual Measure.

1. Start with Denominator
2. Check Patient Diagnosis:
 - a. If Diagnosis of Melanoma or History of Melanoma as Listed in the Denominator equals No, do not include in Eligible Patient Population. Stop Processing.
 - b. If Diagnosis of Melanoma or History of Melanoma as Listed in the Denominator equals Yes, proceed to check Encounter Performed.
3. Check Encounter Performed:
 - a. If Encounter as Listed in the Denominator equals No, do not include in Eligible Patient Population. Stop Processing.
 - b. If Encounter as Listed in the Denominator equals Yes, include in the Eligible population.
4. Denominator Population:
 - a. Denominator population is all Eligible Patients in the denominator. Denominator is represented as Denominator in the Sample Calculation listed at the end of this document. Letter d equals 8 patients in the sample calculation.
5. Start Numerator
6. Check Patient Information Entered into a Recall System that Includes Target Date for Next Exam AND Process to Follow Up with Patients Regarding Missed or Unscheduled Appointments:
 - a. If Patient Information Entered into a Recall System that Includes Target Date for Next Exam AND Process to Follow Up with Patients Regarding Missed or Unscheduled Appointments equals Yes, include in Reporting Met and Performance Met.
 - b. Reporting Met and Performance Met letter is represented in the Reporting Rate and Performance Rate in the Sample Calculation listed at the end of this document. Letter a equals 4 patients in Sample Calculation.
 - c. If Patient Information Entered into a Recall System that Includes Target Date for Next Exam AND Process to Follow Up with Patients Regarding Missed or Unscheduled Appointments equals No, proceed to Documentation of System Reason for Not Entering Patient's Information into a Recall System.
7. Check Documentation of System Reason for Not Entering Patient's Information into a Recall System:
 - a. If Documentation of System Reason for Not Entering Patient's Information into a Recall System equals Yes, include in Reporting Met and Performance Exclusion.
 - b. Reporting Met and Performance Exclusion letter is represented in the Reporting Rate in the Sample Calculation listed at the end of this document. Letter b equals 1 patient in the Sample Calculation.

- c. If Documentation of System Reason for Not Entering Patient's Information into a Recall System equals No, proceed to Recall System Not Utilized, Reason Not Otherwise Specified.
8. Check Recall System Not Utilized, Reason Not Otherwise Specified:
 - a. If Recall System Not Utilized, Reason Not Otherwise Specified equals Yes, include in the Reporting Met and Performance Not Met.
 - b. Reporting Met and Performance Not Met letter is represented in the Reporting Rate in the Sample Calculation listed at the end of this document. Letter c equals 2 patients in the Sample Calculation.
 - c. If Recall System Not Utilized, Reason Not Otherwise Specified equals No, proceed to Reporting Not Met.
9. Check Reporting Not Met
 - a. If Reporting Not Met equals No, Quality Data Code or equivalent not reported. 1 patient has been subtracted from the reporting numerator in the sample calculation.

SAMPLE CALCULATIONS:

Reporting Rate=

$$\frac{\text{Performance MeT (a=4 patients) + Performance Exclusion (b=1 patient) + Performance Not Met (c=2 patients)}}{\text{Eligible Population / Denominator (d=8 patients)}} = \frac{7 \text{ patients}}{8 \text{ patients}} = 87.50\%$$

Performance Rate=

$$\frac{\text{Performance MeT (a=4 patients)}}{\text{Reporting Numerator (7 patients) - Performance Exclusion (b=1 patient)}} = \frac{4 \text{ patients}}{6 \text{ patients}} = 66.66\%$$