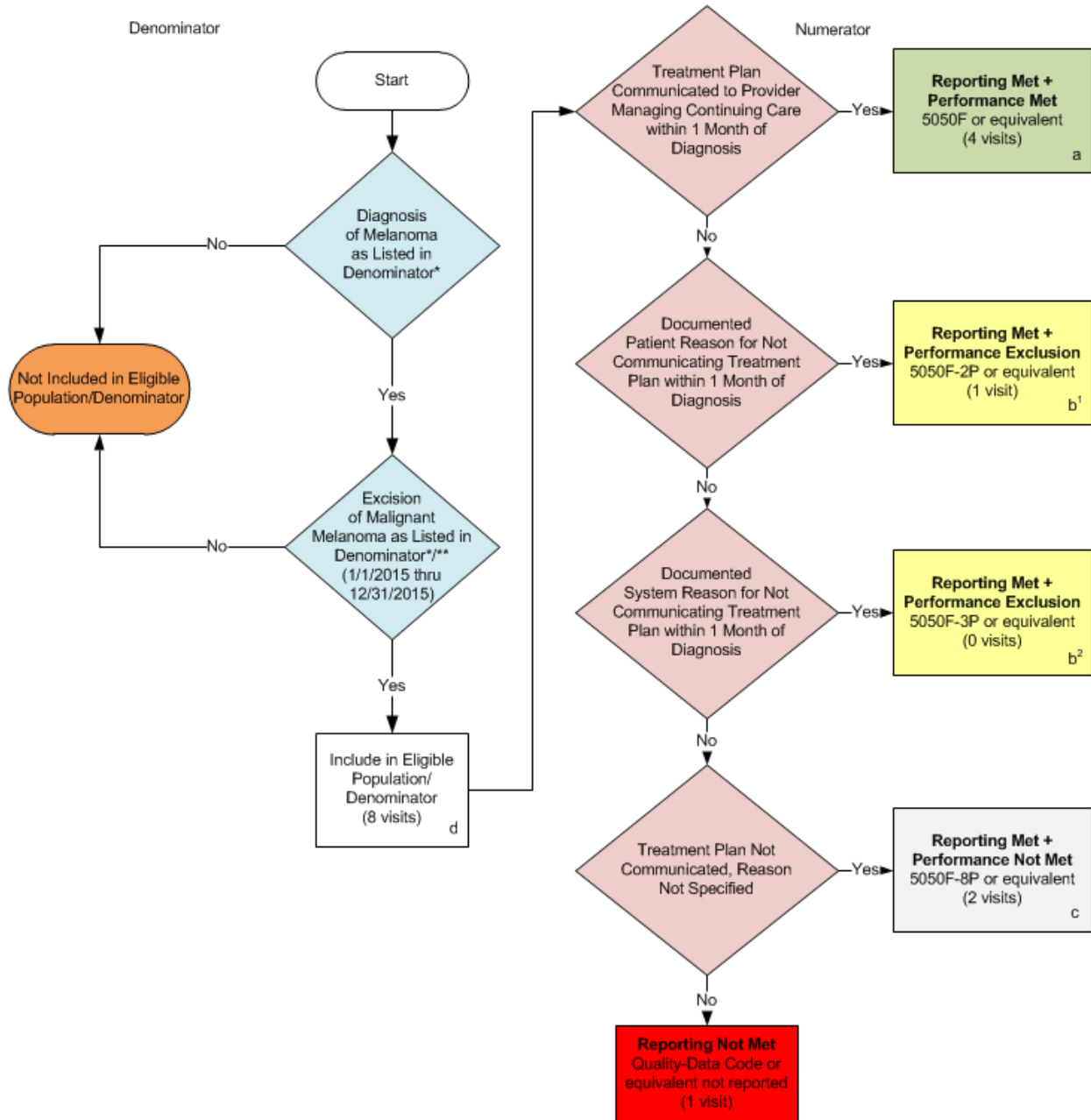


**2015 Registry Individual Measure Flow
PQRS #138: Melanoma: Coordination of Care
Reporting Option One**



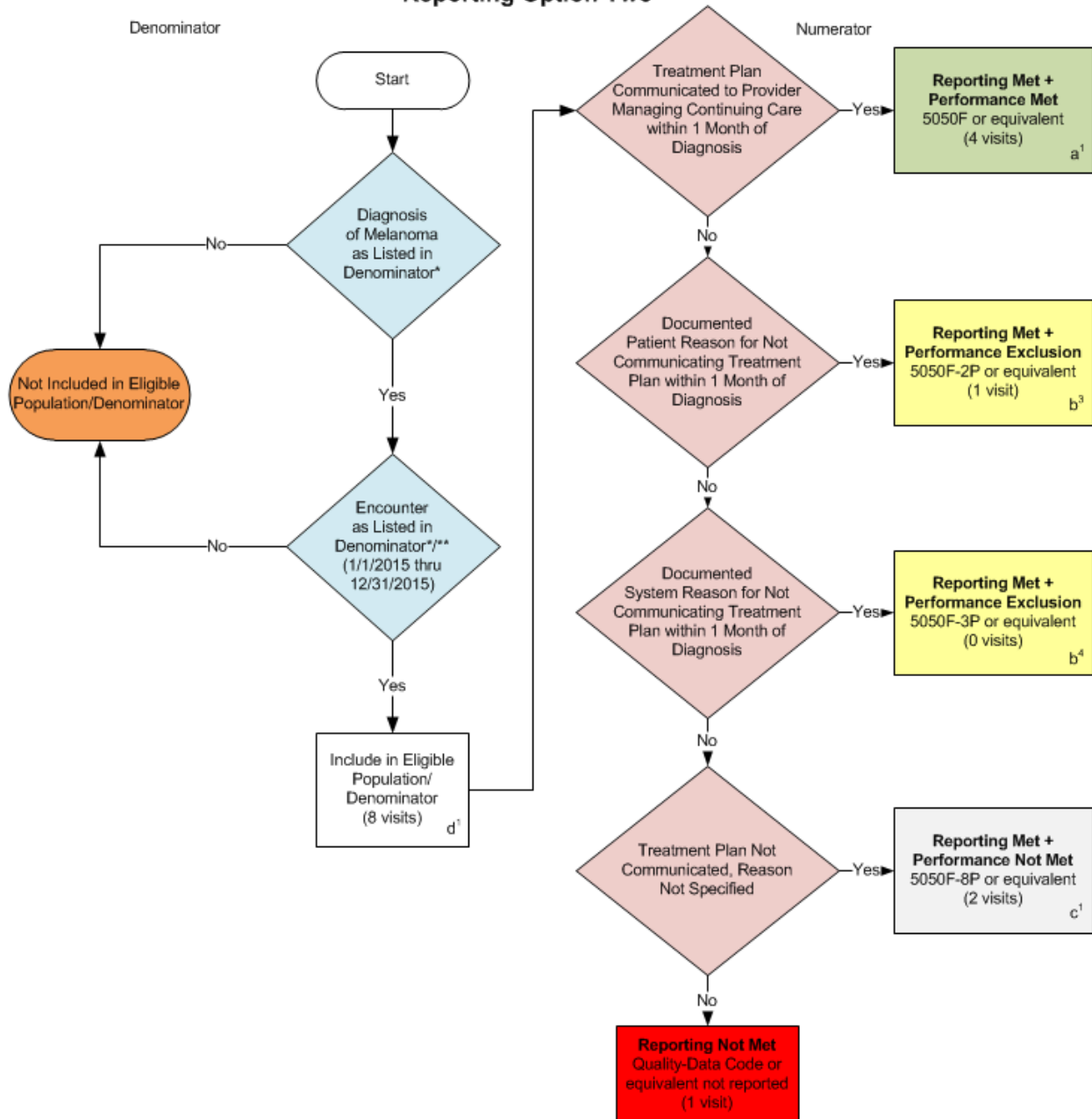
*See the posted Measure Specification for specific coding and instructions to report this measure.

**Eligible cases are determined, and must be reported, if the visit includes either the CPT codes for excision of malignant melanoma or CPT codes for outpatient setting encounter (as listed in Measure Specifications).

NOTE: Report Frequency – Visit

CPT only copyright 2014 American Medical Association. All rights reserved.

**2015 Registry Individual Measure Flow
PQRS #138: Melanoma: Coordination of Care
Reporting Option Two**



*See the posted Measure Specification for specific coding and instructions to report this measure.

**Eligible cases are determined, and must be reported, if the visit includes either the CPT codes for excision of malignant melanoma or CPT codes for outpatient setting encounter (as listed in Measure Specifications).

NOTE: Report Frequency – Visit

CPT only copyright 2014 American Medical Association. All rights reserved.
v1

**2015 Registry Individual Measure Flow
PQRS #138: Melanoma: Coordination of Care**

SAMPLE CALCULATIONS:

Reporting Rate=

$$\frac{\text{Performance Met (a+a'}=8 \text{ visits) + Performance Exclusion (b}^1\text{+b}^2\text{+b}^3\text{+b}^4\text{=2 visit) + Performance Not Met (c+c'}=4 \text{ visits)}}{\text{Eligible Population / Denominator (d+d'}=16 \text{ visits)}} = \frac{14 \text{ visits}}{16 \text{ visits}} = 87.50\%$$

Performance Rate=

$$\frac{\text{Performance Met (a+a'}=8 \text{ visits)}}{\text{Reporting Numerator (14 visits) - Performance Exclusion (b}^1\text{+b}^2\text{+b}^3\text{+b}^4\text{=2 visit)}} = \frac{8 \text{ visits}}{12 \text{ visits}} = 66.66\%$$

*See the posted Measure Specification for specific coding and instructions to report this measure.

This measure contains 2 Reporting Criteria, although as the Sample Calculation indicates, there is **ONLY** one reporting rate and one performance rate for this measure.

NOTE: Report Frequency – Visit

CPT only copyright 2014 American Medical Association. All rights reserved.
v1

2015 Registry Individual Measure Flow
PQRS #138: Melanoma: Coordination of Care

Please refer to the specific section of the Measure Specification to identify the denominator and numerator information for use in reporting this Individual Measure.

Reporting Option One

Start with Denominator

1. Check Patient Diagnosis:
 - a. If Diagnosis of Melanoma as Listed in the Denominator equals No, do not include in Eligible Patient Population. Stop Processing.
 - b. If Diagnosis of Melanoma as Listed in the Denominator equals Yes, proceed to check Excision of Malignant Melanoma as listed in the denominator.
2. Check Excision of Malignant Melanoma as Listed in the Denominator:
 - a. If Excision of Malignant Melanoma as Listed in the Denominator equals No, do not include in Eligible Patient Population. Stop Processing.
 - b. If Excision of Malignant Melanoma in the Denominator equals Yes, include in the Eligible population.
3. Denominator Population:
 - a. Denominator population is all Eligible Patients in the denominator. Denominator is represented as Denominator in the Sample Calculation listed at the end of this document. Letter d equals 8 visits in the sample calculation.
4. Start Numerator
5. Check Treatment Plan Communicated to Provider Managing Continuing Care within 1 Month of Diagnosis:
 - a. If Treatment Plan Communicated to Provider Managing Continuing Care within 1 Month of Diagnosis equals Yes, include in Reporting Met and Performance Met.
 - b. Reporting Met and Performance Met letter is represented in the Reporting Rate and Performance Rate in the Sample Calculation listed at the end of this document. Letter a equals 4 visits in Sample Calculation.
 - c. If Treatment Plan Communicated to Provider Managing Continuing Care within 1 Month of Diagnosis equals No, proceed to Documented Patient Reason for Not Communicating Treatment Plan within 1 Month of Diagnosis.
6. Check Documented Patient Reason for Not Communicating Treatment Plan within 1 Month of Diagnosis:
 - a. If Documented Patient Reason for Not Communicating Treatment Plan within 1 Month of Diagnosis equals Yes, include in Reporting Met and Performance Exclusion.
 - b. Reporting Met and Performance Exclusion letter is represented in the Reporting Rate in the Sample Calculation listed at the end of this document. Letter b¹ equals 1 visit in the Sample Calculation.

- c. If Documented Patient Reason for Not Communicating Treatment Plan within 1 Month of Diagnosis equals No, proceed to Documented System Reason for Not Communicating Treatment Plan within 1 Month of Diagnosis.
- 7. Check Documented System Reason for Not Communicating Treatment Plan within 1 Month of Diagnosis:
 - a. If Documented System Reason for Not Communicating Treatment Plan within 1 Month of Diagnosis equals Yes, include in Reporting Met and Performance Exclusion.
 - b. Reporting Met and Performance Exclusion letter is represented in the Reporting Rate in the Sample Calculation listed at the end of this document. Letter b² equals 0 visits in the Sample Calculation.
 - c. If Documented System Reason for Not Communicating Treatment Plan within 1 Month of Diagnosis equals No, proceed to Treatment Plan Not Communicated, Reason Not Specified.
- 8. Check Treatment Plan Not Communicated, Reason Not Specified:
 - a. If Treatment Plan Not Communicated, Reason Not Specified equals Yes, include in the Reporting Met and Performance Not Met.
 - b. Reporting Met and Performance Not Met letter is represented in the Reporting Rate in the Sample Calculation listed at the end of this document. Letter c equals 2 visits in the Sample Calculation.
 - c. If Treatment Plan Not Communicated, Reason Not Specified equals No, proceed to Reporting Not Met.
- 9. Check Reporting Not Met:
 - a. If Reporting Not Met equals No, Quality Data Code or equivalent not reported. 1 visit has been subtracted from the reporting numerator in the sample calculation.

2015 Registry Individual Measure Flow
PQRS #138: Melanoma: Coordination of Care

Please refer to the specific section of the Measure Specification to identify the denominator and numerator information for use in reporting this Individual Measure.

Reporting Criteria Two

Start with Denominator

10. Check Patient Diagnosis:

- a. If Diagnosis of Melanoma as Listed in the Denominator equals No, do not include in Eligible Patient Population. Stop Processing.
- b. If Diagnosis of Melanoma as Listed in the Denominator equals Yes, proceed to check Encounter Performed.

11. Check Encounter Performed:

- a. If Encounter as listed in the denominator equals No, do not include in Eligible Patient Population. Stop Processing.
- b. If Encounter as listed in the denominator equals Yes, include in the Eligible population.

12. Denominator Population:

- a. Denominator population is all Eligible Patients in the denominator. Denominator is represented as Denominator in the Sample Calculation listed at the end of this document. Letter d¹ equals 8 visits in the sample calculation.

13. Start Numerator

14. Check Treatment Plan Communicated to Provider Managing Continuing Care within 1 Month of Diagnosis:

- a. If Treatment Plan Communicated to Provider Managing Continuing Care within 1 Month of Diagnosis equals Yes, include in Reporting Met and Performance Met.
- b. Reporting Met and Performance Met letter is represented in the Reporting Rate and Performance Rate in the Sample Calculation listed at the end of this document. Letter a¹ equals 4 visits in Sample Calculation.
- c. If Treatment Plan Communicated to Provider Managing Continuing Care within 1 Month of Diagnosis equals No, proceed to Documented Patient Reason for Not Communicating Treatment Plan within 1 Month of Diagnosis.

15. Check Documented Patient Reason for Not Communicating Treatment Plan within 1 Month of Diagnosis:

- a. If Documented Patient Reason for Not Communicating Treatment Plan within 1 Month of Diagnosis equals Yes, include in Reporting Met and Performance Exclusion.
- b. Reporting Met and Performance Exclusion letter is represented in the Reporting Rate in the Sample Calculation listed at the end of this document. Letter b³ equals 1 visit in the Sample Calculation.

- c. If Documented Patient Reason for Not Communicating Treatment Plan within 1 Month of Diagnosis equals No, proceed to Documented System Reason for Not Communicating Treatment Plan within 1 Month of Diagnosis.

16. Check Documented System Reason for Not Communicating Treatment Plan within 1 Month of Diagnosis:

- a. If Documented System Reason for Not Communicating Treatment Plan within 1 Month of Diagnosis equals Yes, include in Reporting Met and Performance Exclusion.
- b. Reporting Met and Performance Exclusion letter is represented in the Reporting Rate in the Sample Calculation listed at the end of this document. Letter b⁴ equals 0 visits in the Sample Calculation.
- c. If Documented System Reason for Not Communicating Treatment Plan within 1 Month of Diagnosis equals No, proceed to Treatment Plan Not Communicated, Reason Not Specified.

17. Check Treatment Plan Not Communicated, Reason Not Specified:

- a. If Treatment Plan Not Communicated, Reason Not Specified equals Yes, include in the Reporting Met and Performance Not Met.
- b. Reporting Met and Performance Not Met letter is represented in the Reporting Rate in the Sample Calculation listed at the end of this document. Letter c¹ equals 2 visits in the Sample Calculation.
- c. If Treatment Plan Not Communicated, Reason Not Specified equals No, proceed to Reporting Not Met.

18. Check Reporting Not Met:

- a. If Reporting Not Met equals No, Quality Data Code or equivalent not reported. 1 visit has been subtracted from the reporting numerator in the sample calculation.

SAMPLE CALCULATIONS:

Reporting Rate=

$$\frac{\text{Performance Met (a+a}^1\text{=8 visits) + Performance Exclusion (b}^1\text{+b}^2\text{+b}^3\text{+b}^4\text{=2 visit) + Performance Not Met (c+c}^1\text{=4 visits)}}{\text{Eligible Population / Denominator (d+d}^1\text{=16 visits)}} = \frac{14 \text{ visits}}{16 \text{ visits}} = 87.50\%$$

Performance Rate=

$$\frac{\text{Performance Met (a+a}^1\text{=8 visits)}}{\text{Reporting Numerator (14 visits) - Performance Exclusion (b}^1\text{+b}^2\text{=1 visit)}} = \frac{8 \text{ visits}}{14 \text{ visits}} = 66.66\%$$

This measure contains 2 Reporting Options, although as the Sample Calculation indicates, there is **ONLY** one reporting rate and one performance rate for this measure.