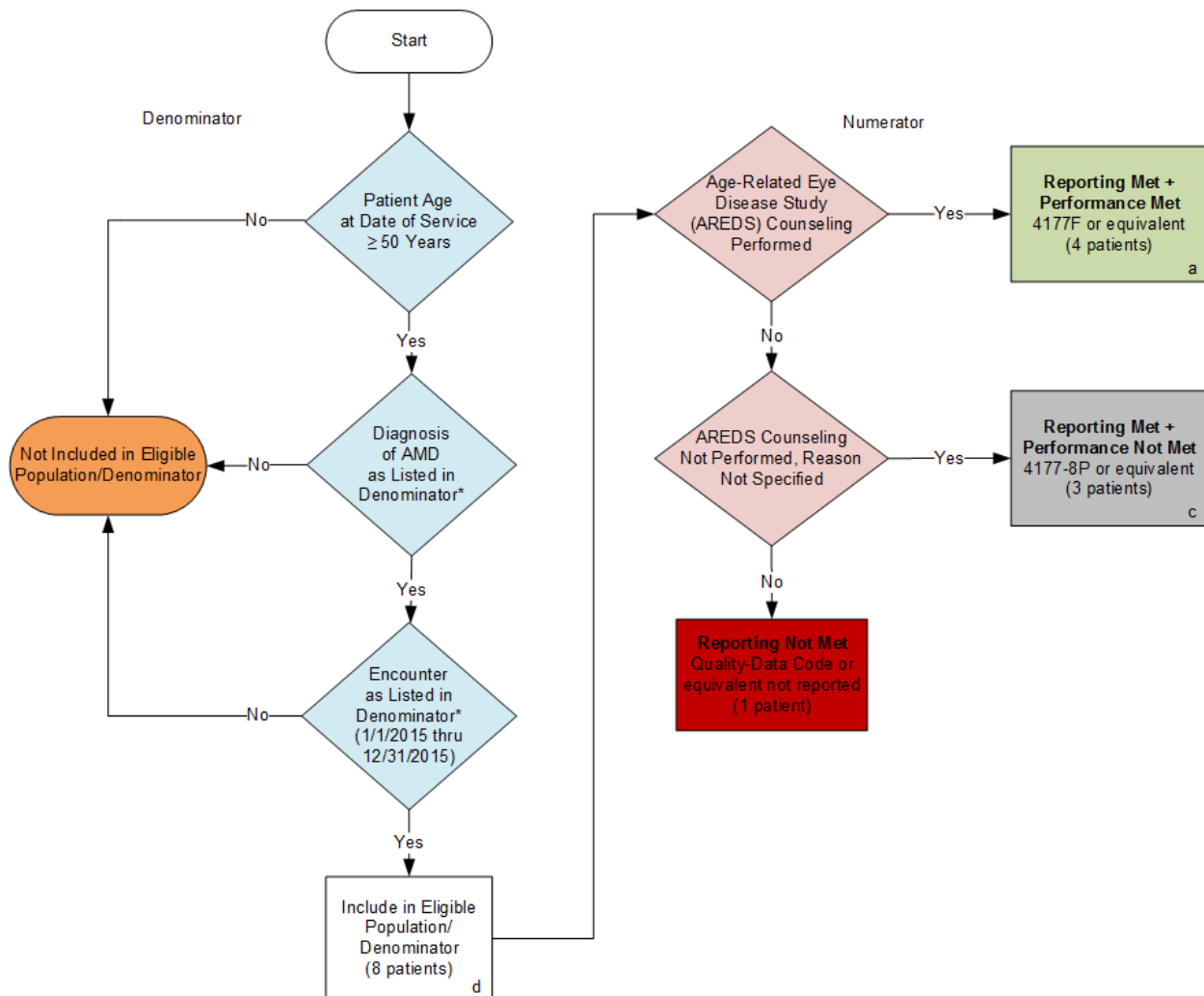


2015 Claims/Registry Individual Measure Flow
PQRS #140 NQF #0566: Age-Related Macular Degeneration (AMD): Counseling on Antioxidant Supplement



SAMPLE CALCULATIONS:

Reporting Rate=

$$\frac{\text{Performance Met (a=4 patients)} + \text{Performance Not Met (c=3 patients)}}{\text{Eligible Population / Denominator (d=8 patients)}} =$$

$$\frac{7 \text{ patients}}{8 \text{ patients}} = 87.50\%$$

Performance Rate=

$$\frac{\text{Performance Met (a=4 patients)}}{\text{Reporting Numerator (7 patients)}} = \frac{4 \text{ patients}}{7 \text{ patients}} = 57.14\%$$

*See the posted Measure Specification for specific coding and instructions to report this measure.
 NOTE: Report Frequency – Patient-process

CPT only copyright 2014 American Medical Association. All rights reserved.

2015 Claims/Registry Individual Measure Flow
PQRS #140 NQF #0566: Age-Related Macular Degeneration (AMD): Counseling on
Antioxidant Supplement

Please refer to the specific section of the Measure Specification to identify the denominator and numerator information for use in reporting this Individual Measure.

1. Start with Denominator
2. Check Patient Age:
 - a. If Age greater than or equal to 50 years of age on Date of Service equals No during the measurement period, do not include in Eligible Patient Population. Stop Processing.
 - b. If Age greater than or equal to 50 years of age on Date of Service equals Yes during the measurement period, proceed to check Patient Diagnosis.
3. Check Patient Diagnosis:
 - a. If Diagnosis of AMD as Listed in the Denominator equals No, do not include in Eligible Patient Population. Stop Processing.
 - b. If Diagnosis of AMD as Listed in the Denominator equals Yes, proceed to check Encounter Performed.
4. Check Encounter Performed:
 - a. If Encounter as Listed in the Denominator equals No, do not include in Eligible Patient Population. Stop Processing.
 - b. If Encounter as Listed in the Denominator equals Yes, include in the Eligible population.
5. Denominator Population:
 - a. Denominator population is all Eligible Patients in the denominator. Denominator is represented as Denominator in the Sample Calculation listed at the end of this document. Letter d equals 8 patients in the sample calculation.
6. Start Numerator
7. Check Age-Related Eye Disease Study (AREDS) Counseling Performed:
 - a. If Age-Related Eye Disease Study (AREDS) Counseling Performed equals Yes, include in Reporting Met and Performance Met.
 - b. Reporting Met and Performance Met letter is represented in the Reporting Rate and Performance Rate in the Sample Calculation listed at the end of this document. Letter a equals 4 patients in Sample Calculation.
 - c. If Age-Related Eye Disease Study (AREDS) Counseling Performed equals No, proceed to AREDS Counseling Not Performed, Reason Not Specified
8. Check AREDS Counseling Not Performed, Reason Not Specified:
 - a. If AREDS Counseling Not Performed, Reason Not Specified equals Yes, include in the Reporting Met and Performance Not Met.
 - b. Reporting Met and Performance Not Met letter is represented in the Reporting Rate in the Sample Calculation listed at the end of this document. Letter c equals 3 patients in the Sample Calculation.

- c. If AREDs Counseling Not Performed, Reason Not Specified equals No, proceed to Reporting Not Met.
- 9. Check Reporting Not Met:
 - a. If Reporting Not Met equals No, Quality Data Code or equivalent not reported. 1 patient has been subtracted from the numerator in the sample calculation.

SAMPLE CALCULATIONS:

Reporting Rate=

Performance Met (a=4 patients) + Performance Not Met (c=3 patients) = 7 patients = 87.50%
Eligible Population / Denominator (d=8 patients) = 8 patients

Performance Rate=

Performance Met (a=4 patients) = 4 patients = 57.14%
Reporting Numerator (7 patients) = 7 patients