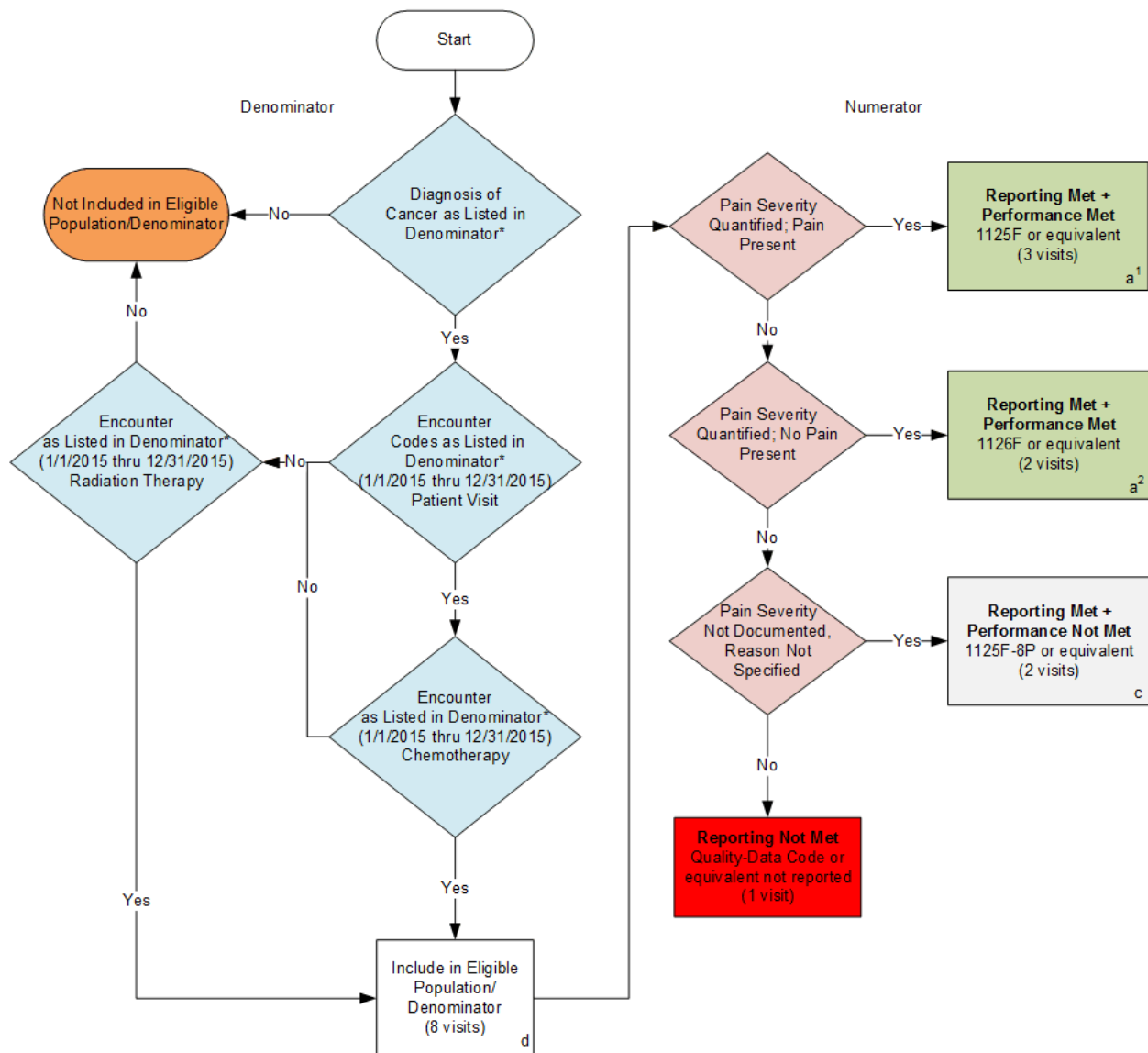


2015 Registry Individual Measure Flow
PQRS #143 NQF#0384: Oncology: Medical and Radiation – Pain Intensity Quantified



SAMPLE CALCULATIONS:			
Reporting Rate=			
<u>Performance Met (a¹+a²=5 visits) + Performance Not Met (c=2 visits) =</u>		<u>7 visits</u> = 87.50%	
Eligible Population / Denominator (d=8 visits) =		8 visits	
Performance Rate=			
<u>Performance Met (a¹+a²=5 visits) =</u>		<u>5 visits</u> = 71.43%	
Reporting Numerator (7 visits) =		7 visits	

*See the posted Measure Specification for specific coding and instructions to report this measure.
 NOTE: Reporting Frequency - Visit

CPT only copyright 2014 American Medical Association. All rights reserved.

2015 Registry Individual Measure Flow
PQRS #143 NQF #0384: Oncology: Medical and Radiation – Pain Intensity
Quantified

Please refer to the specific section of the Measure Specification to identify the denominator and numerator information for use in reporting this Individual Measure.

1. Start with Denominator
2. Check Patient Diagnosis:
 - a. If Diagnosis of Cancer as Listed in the Denominator equals No, do not include in Eligible Patient Population. Stop Processing.
 - b. If Diagnosis of Cancer as Listed in the Denominator equals Yes, proceed to check Encounter Performed for Patient Visit.
3. Check Encounter Performed for Patient Visit:
 - a. If Encounter Performed for Patient Visit as Listed in the Denominator equals No, proceed to check Encounter Performed for Radiation Therapy.
 - b. If Encounter as Listed in the Denominator equals Yes, proceed to check Encounter Performed for Chemotherapy.
4. Check Encounter Performed for Chemotherapy:
 - a. If Encounter Performed for Chemotherapy as Listed in the Denominator equals No, proceed to check Encounter Performed for Radiation Therapy.
 - b. If Encounter Performed for Chemotherapy as Listed in the Denominator equals Yes, include in Eligible Population.
5. Check Encounter Performed for Radiation Therapy:
 - a. If Encounter Performed for Radiation Therapy as Listed in the Denominator equals No, do not include in Eligible Population. Stop Processing.
 - b. If Encounter as Listed in the Denominator for radiation therapy equals Yes, include in Eligible Population.
6. Denominator Population:
 - a. Denominator population is all Eligible Patients in the denominator. Denominator is represented as Denominator in the Sample Calculation listed at the end of this document. Letter d equals 8 visits in the sample calculation.
7. Start Numerator
8. Check Pain Severity Quantified; Pain Present:
 - a. If Pain Severity Quantified; Pain Present equals Yes, include in Reporting Met and Performance Met.
 - b. Reporting Met and Performance Met letter is represented in the Reporting Rate and Performance Rate in the Sample Calculation listed at the end of this document. Letter a¹ equals 3 visits in Sample Calculation.
 - c. If Pain Severity Quantified; Pain Present equals No, proceed to Pain Severity Quantified; No Pain Present.

9. Check Pain Severity Quantified; No Pain Present:
 - a. If Pain Severity Quantified; No Pain Present equals Yes, include in Reporting Met and Performance Met.
 - b. Reporting Met and Performance Met letter is represented in the Reporting Rate and Performance Rate in the Sample Calculation listed at the end of this document. Letter a² equals 2 visits in Sample Calculation.
 - c. If Pain Severity Quantified; No Pain Present equals No, Pain Severity Not Documented, Reason Not Specified.
10. Check Pain Severity Not Documented, Reason Not Specified:
 - a. If Pain Severity Not Documented, Reason Not Specified equals Yes, include in Reporting Met and Performance Not Met.
 - b. Reporting Met and Performance Not Met letter is represented in the Reporting Rate in the Sample Calculation listed at the end of this document. Letter c equals 2 visits in the Sample Calculation.
 - c. If Pain Severity Not Documented, Reason Not Specified equals No, proceed to Reporting Not Met.
11. Check Reporting Not Met:
 - a. If Reporting Not Met equals No, Quality Data Code or equivalent not reported. 1 visit has been subtracted from the reporting numerator in the sample calculation.

SAMPLE CALCULATIONS:

Reporting Rate=

$\frac{\text{Performance MeT (a}^1\text{+a}^2\text{=5 visits) + Performance Not Met (c=2 visits)}}{\text{Eligible Population / Denominator (d=8 visits)}}$	$\frac{7 \text{ visits}}{8 \text{ visits}} = 87.50\%$
--	---

Performance Rate=

$\frac{\text{Performance MeT (a}^1\text{+a}^2\text{=5 visits)}}{\text{Reporting Numerator (7 visits)}}$	$\frac{5 \text{ visits}}{7 \text{ visits}} = 71.43\%$
---	---