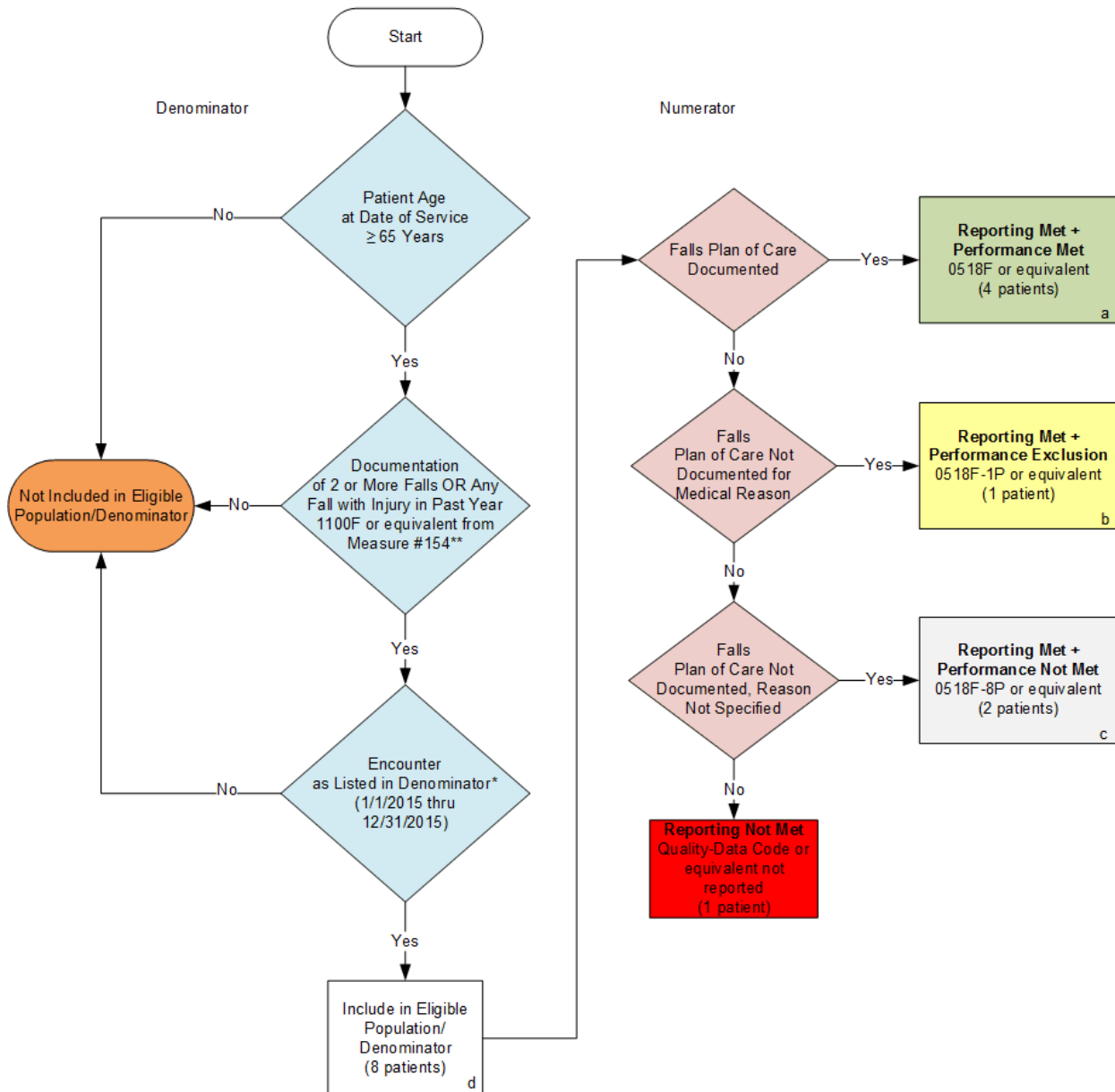


2015 Claims/Registry Individual Measure Flow PQRS #155 NQF #0101: Falls: Plan of Care



SAMPLE CALCULATIONS:

Reporting Rate=

$$\frac{\text{Performance Met (a=4 patients)} + \text{Performance Exclusion (b=1 patient)} + \text{Performance Not Met (c=2 patients)}}{\text{Eligible Population / Denominator (d=8 patients)}} = \frac{7 \text{ patients}}{8 \text{ patients}} = 87.50\%$$

Performance Rate=

$$\frac{\text{Performance Met (a=4 patients)}}{\text{Reporting Numerator (7 patients) - Performance Exclusion (b=1 patient)}} = \frac{4 \text{ patients}}{6 \text{ patients}} = 66.66\%$$

* See the posted Measure Specification for specific coding and instructions to report this measure.

** Reporting measure #154 is a precursor for reporting this measure. Patients where 1100F without modifier or equivalent (documentation of 2 or more falls or any fall with injury in past year) is reported in measure #154 are pulled into the denominator for measure #155.

NOTE: Report Frequency – Patient process

CPT only copyright 2014 American Medical Association. All rights reserved.

2015 Claims/Registry Individual Measure Flow
PQRS #155 NQF #0101: Falls: Plan of Care

Please refer to the specific section of the Measure Specification to identify the denominator and numerator information for use in reporting this Individual Measure.

1. Start with Denominator
2. Check Patient Age:
 - a. If the Age is greater than or equal to 65 years of age on Date of Service and equals No during the measurement period, do not include in Eligible Patient Population. Stop Processing.
 - b. If the Age is greater than or equal to 65 years of age on Date of Service and equals Yes during the measurement period, proceed to check Documentation of Two or More Falls or Any Fall with Injury in the Past Year.
3. Check Documentation of Two or More Falls or Any Fall with Injury in the Past Year:
 - a. If Documentation of Two or More Falls or Any Fall with Injury in the Past Year equals No, do not include in Eligible Patient Population. Stop Processing.
 - b. If Documentation of Two or More Falls or Any Fall with Injury in the Past Year equals Yes, proceed to check Encounter Performed.
4. Check Encounter Performed:
 - a. If Encounter as Listed in the Denominator equals No, do not include in Eligible Patient Population. Stop Processing.
 - b. If Encounter as Listed in the Denominator equals Yes, include in the Eligible population.
5. Denominator Population:
 - a. Denominator population is all Eligible Patients in the denominator. Denominator is represented as Denominator in the Sample Calculation listed at the end of this document. Letter d equals 8 patients in the sample calculation.
6. Start Numerator
7. Check Falls Plan of Care Documented:
 - a. If Falls Plan of Care Documented equals Yes, include in Reporting Met and Performance Met.
 - b. Reporting Met and Performance Met letter is represented in the Reporting Rate and Performance Rate in the Sample Calculation listed at the end of this document. Letter a equals 4 patients in Sample Calculation.
 - c. If Falls Plan of Care Documented equals No, proceed to Falls Plan of Care Not Documented for Medical Reasons.
8. Check Falls Plan of Care Not Documented for Medical Reasons:
 - a. If Falls Plan of Care Not Documented for Medical Reasons equals Yes, include in Reporting Met and Performance Exclusion.
 - b. Reporting Met and Performance Exclusion letter is represented in the Reporting Rate in the Sample Calculation listed at the end of this document. Letter b equals 1 patient in the Sample Calculation.

- c. If Falls Plan of Care Not Documented for Medical Reasons equals No, proceed to Falls Plan of Care Not Documented, Reason Not Specified.

9. Check Falls Plan of Care Not Documented, Reason Not Specified:

- a. If Falls Plan of Care Not Documented, Reason Not Specified equals Yes, include in the Reporting Met and Performance Not Met.
- b. Reporting Met and Performance Not Met letter is represented in the Reporting Rate in the Sample Calculation listed at the end of this document. Letter c equals 2 patients in the Sample Calculation.
- c. If Falls Risk Assessment Not Completed, Reason Not Specified equals No, proceed to Reporting Not Met.

10. Check Reporting Not Met:

- a. If Reporting Not Met equals No, Quality Data Code or equivalent not reported. 1 patient has been subtracted from the reporting numerator in the sample calculation.

SAMPLE CALCULATIONS:

Reporting Rate=

$$\frac{\text{Performance MeT (a=4 patients) + Performance Exclusion (b=1 patient) + Performance Not Met (c=2 patients)}}{\text{Eligible Population / Denominator (d=8 patients)}} = \frac{7 \text{ patients}}{8 \text{ patients}} = 87.50\%$$

Performance Rate=

$$\frac{\text{Performance MeT (a=4 patients)}}{\text{Reporting Numerator (7 patients) - Performance Exclusion (b=1 patient)}} = \frac{4 \text{ patients}}{6 \text{ patients}} = 66.66\%$$