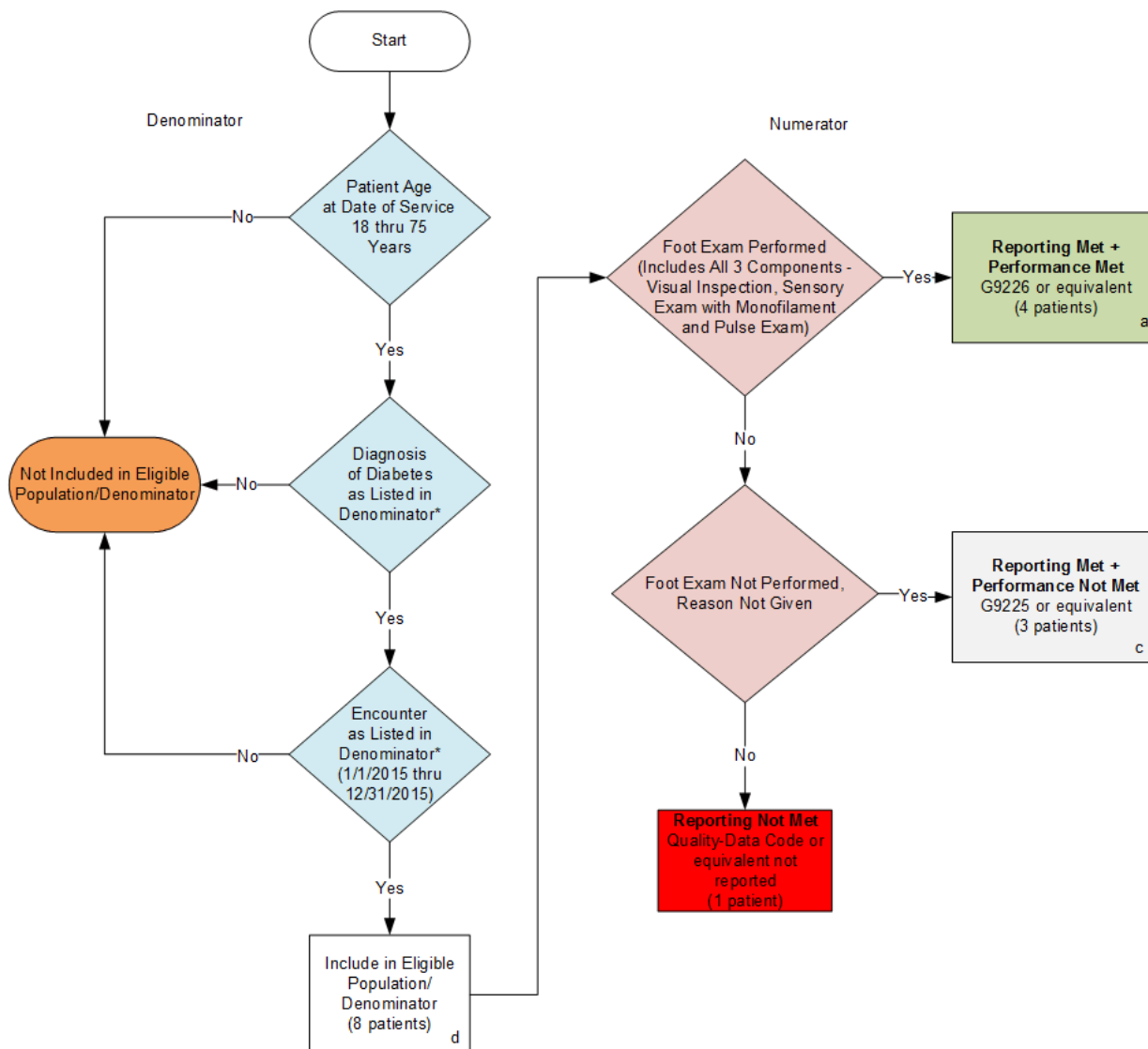


**2015 Claims/Registry Individual Measure Flow
PQRS #163 NQF #0056: Diabetes: Foot Exam**



SAMPLE CALCULATIONS:

Reporting Rate=

$$\frac{\text{Performance Met (a=4 patients) + Performance Not Met (c=3 patients)}}{\text{Eligible Population / Denominator (d=8 patients)}} = \frac{7 \text{ patients}}{8 \text{ patients}} = 87.50\%$$

Performance Rate=

$$\frac{\text{Performance Met (a=4 patients)}}{\text{Reporting Numerator (7 patients)}} = \frac{4 \text{ patients}}{7 \text{ patients}} = 57.14\%$$

*See the posted Measure Specification for specific coding and instructions to report this measure.
NOTE: Report Frequency – Patient Process

CPT only copyright 2014 American Medical Association. All rights reserved.

2015 Claims/Registry Individual Measure Flow
PQRS #163 NQF #0056: Diabetes: Foot Exam

Please refer to the specific section of the Measure Specification to identify the denominator and numerator information for use in reporting this Individual Measure.

1. Start with Denominator
2. Check Patient Age:
 - a. If the Age is equal to 18 thru 75 years of age on Date of Service and equals No during the measurement period, do not include in Eligible Patient Population. Stop Processing.
 - b. If the Age is equal to 18 thru 75 years of age on Date of Service and equals Yes during the measurement period, proceed to check Patient Diagnosis.
3. Check Patient Diagnosis:
 - a. If Diagnosis of Diabetes as Listed in the Denominator equals No, do not include in Eligible Patient Population. Stop Processing.
 - b. If Diagnosis of Diabetes as Listed in the Denominator equals Yes, proceed to check Encounter Performed.
4. Check Encounter Performed:
 - a. If Encounter as Listed in the Denominator equals No, do not include in Eligible Patient Population. Stop Processing.
 - b. If Encounter as Listed in the Denominator equals Yes, include in the Eligible population.
5. Denominator Population:
 - a. Denominator population is all Eligible Patients in the denominator. Denominator is represented as Denominator in the Sample Calculation listed at the end of this document. Letter d equals 8 patients in the sample calculation.
6. Start Numerator
7. Check Foot Exam Performed (Includes All 3 Components – Visual Inspection, Sensory Exam with Monofilament and Pulse Exam):
 - a. If Foot Exam Performed (Includes All 3 Components – Visual Inspection, Sensory Exam with Monofilament and Pulse Exam) equals Yes, include in Reporting Met and Performance Met.
 - b. Reporting Met and Performance Met letter is represented in the Reporting Rate and Performance Rate in the Sample Calculation listed at the end of this document. Letter a equals 4 patients in Sample Calculation.
 - c. If Foot Exam Performed (Includes All 3 Components – Visual Inspection, Sensory Exam with Monofilament and Pulse Exam) equals No, proceed to Foot Exam Not Performed, Reason Not Given.

8. Check Foot Exam Not Performed, Reason Not Given:
 - a. If Foot Exam Not Performed, Reason Not Given equals Yes, include in Reporting Met and Performance Not Met.
 - b. Reporting Met and Performance Not Met letter is represented in the Reporting Rate in the Sample Calculation listed at the end of this document. Letter c equals 3 patients in the Sample Calculation.
 - c. If Foot Exam Not Performed, Reason Not Given equals No, proceed to Reporting Not Met.
9. Check Reporting Not Met:
 - a. If Reporting Not Met equals No, Quality Data Code or equivalent not reported. 1 patient has been subtracted from the reporting numerator in the sample calculation.

SAMPLE CALCULATIONS:

Reporting Rate=

$$\frac{\text{Performance Met (a=4 patients)} + \text{Performance Not Met (c=3 patients)}}{\text{Eligible Population / Denominator (d=8 patients)}} = \frac{7 \text{ patients}}{8 \text{ patients}} = 87.50\%$$

Performance Rate=

$$\frac{\text{Performance Met (a=4 patients)}}{\text{Reporting Numerator (7 patients)}} = \frac{4 \text{ patients}}{7 \text{ patients}} = 57.14\%$$