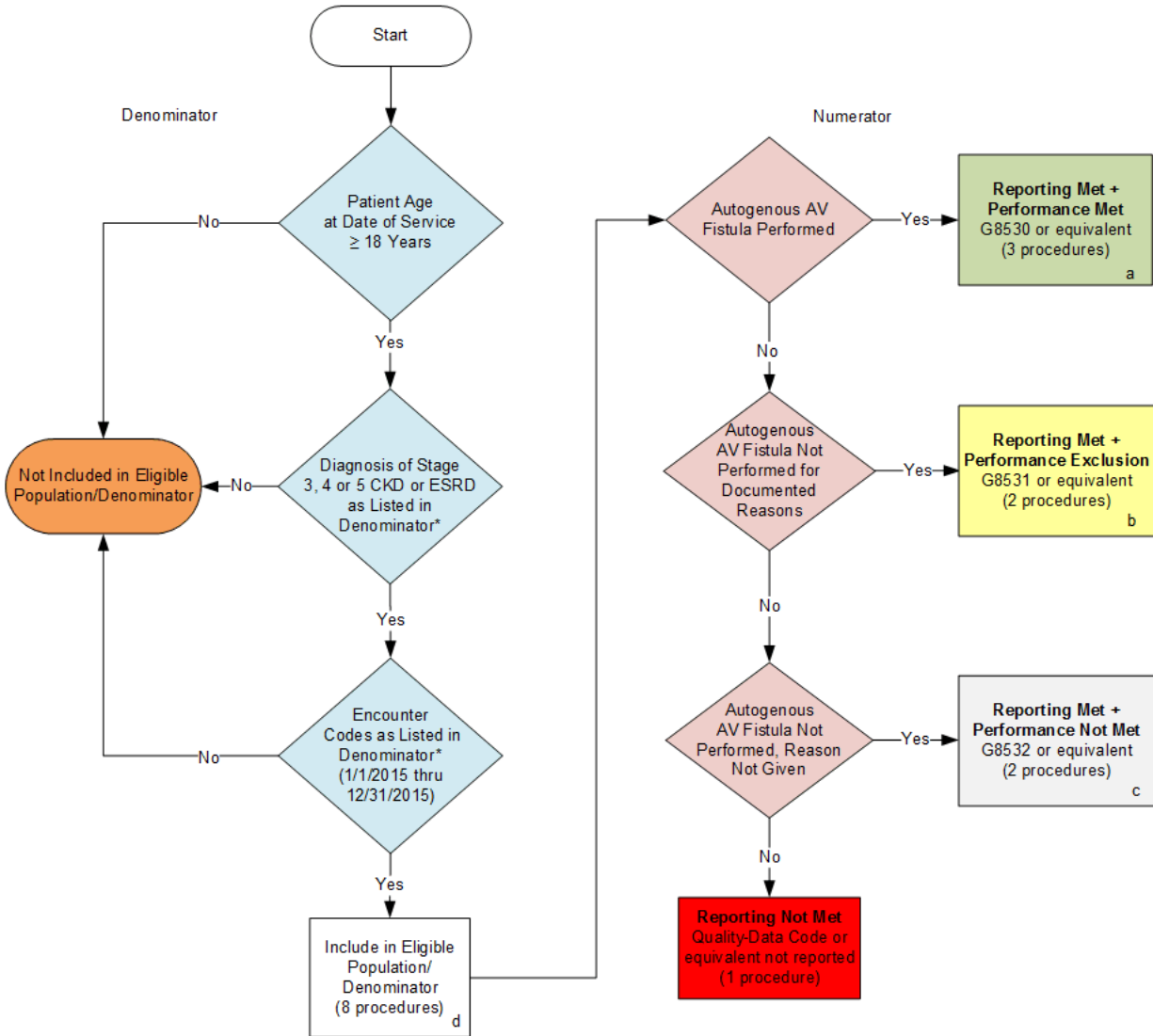


**2015 Claims/Registry Individual Measure Flow**  
**PQRS #172 NQF #0259: Hemodialysis Vascular Access Decision-Making by Surgeon to**  
**Maximize Placement of Autogenous Arterial Venous (AV) Fistula**



**SAMPLE CALCULATIONS:**

**Reporting Rate=**

Performance Met (a=3 procedures) + Performance Exclusion (b=2 procedures) + Performance Not Met (c=2 procedures) =  $\frac{7 \text{ procedures}}{8 \text{ procedures}} = 87.50\%$   
 Eligible Population / Denominator (d=8 procedures) =

**Performance Rate=**

Performance Met (a=3 procedures) =  $\frac{3 \text{ procedures}}{5 \text{ procedures}} = 60.00\%$   
 Reporting Numerator (7 procedures) – Performance Exclusion (b=2 procedures) =

\* See the posted Measure Specification for specific coding and instructions to report this measure.  
 NOTE: Report Frequency – Procedure

**2015 Claims/Registry Individual Measure Flow**  
**PQRS #172 NQF #0259: Hemodialysis Vascular Access Decision-Making by**  
**Surgeon to Maximize Placement of Autogenous Arterial Venous (AV) Fistula**

Please refer to the specific section of the Measure Specification to identify the denominator and numerator information for use in reporting this Individual Measure.

1. Start with Denominator
2. Check Patient Age:
  - a. If the Age is greater than or equal to 18 years of age on Date of Service and equals No during the measurement period, do not include in Eligible Patient Population. Stop Processing.
  - b. If the Age is greater than or equal to 18 years of age on Date of Service and equals Yes during the measurement period, proceed to check Patient Diagnosis.
3. Check Patient Diagnosis:
  - a. If Diagnosis of Stage 3, 4, or 5 CKD or ESRD as Listed in the Denominator equals No, do not include in Eligible Patient Population. Stop Processing.
  - b. If Diagnosis of Stage 3, 4, or 5 CKD or ESRD as Listed in the Denominator equals Yes, proceed to check Encounter Performed.
4. Check Encounter Performed:
  - a. If Encounter as Listed in the Denominator equals No, do not include in Eligible Patient Population. Stop Processing.
  - b. If Encounter as Listed in the Denominator equals Yes, include in the Eligible Population.
5. Denominator Population:
  - a. Denominator population is all Eligible Patients in the denominator. Denominator is represented as Denominator in the Sample Calculation listed at the end of this document. Letter d equals 8 procedures in the sample calculation.
6. Start Numerator
7. Check Autogenous AV Fistula Performed:
  - a. If Autogenous AV Fistula performed equals Yes, include in Reporting Met and Performance Met.
  - b. Reporting Met and Performance Met letter is represented in the Reporting Rate and Performance Rate in the Sample Calculation listed at the end of this document. Letter a equals 3 procedures in Sample Calculation.
  - c. If Autogenous AV Fistula performed equals No, proceed to Autogenous AV Fistula Not Performed for Documented Reasons.
8. Check Autogenous AV Fistula Not Performed for Documented Reasons:
  - a. If Autogenous AV Fistula Not Performed for Documented Reasons equals Yes, include in Reporting Met and Performance Exclusion.
  - b. Reporting Met and Performance Exclusion letter is represented in the Reporting Rate and Performance Rate in the Sample Calculation listed at the end of this document. Letter b equals 2 procedures in the Sample Calculation.

- c. If Autogenous AV Fistula Not Performed for Documented Reasons equals No, proceed to Autogenous AV Fistula Not Performed, Reason Not given.
9. Check Autogenous AV Fistula Not Performed, Reason Not given:
  - a. If Autogenous AV Fistula Not Performed, Reason Not given equals Yes, include in the Reporting Met and Performance Not Met.
  - b. Reporting Met and Performance Not Met letter is represented in the Reporting Rate in the Sample Calculation listed at the end of this document. Letter c equals 2 procedures in the Sample Calculation.
  - c. If Autogenous AV Fistula Not Performed, Reason Not given equals No, proceed to Reporting Not Met.
10. Check Reporting Not Met:
  - a. If Reporting Not Met equals No, Quality Data Code or equivalent not reported. 1 procedure has been subtracted from the reporting numerator in the sample calculation.

#### **SAMPLE CALCULATIONS:**

##### **Reporting Rate=**

$$\frac{\text{Performance Met (a=3 procedures) + Performance Exclusion (b=2 procedures) + Performance Not Met (c=2 procedures)}}{\text{Eligible Population / Denominator (d=8 procedures)}} = \frac{7 \text{ procedures}}{8 \text{ procedures}} = 87.50\%$$

##### **Performance Rate=**

$$\frac{\text{Performance Met (a=3 procedures)}}{\text{Reporting Numerator (7 procedures) - Performance Exclusion (b=2 procedures)}} = \frac{3 \text{ procedures}}{5 \text{ procedures}} = 60.00\%$$