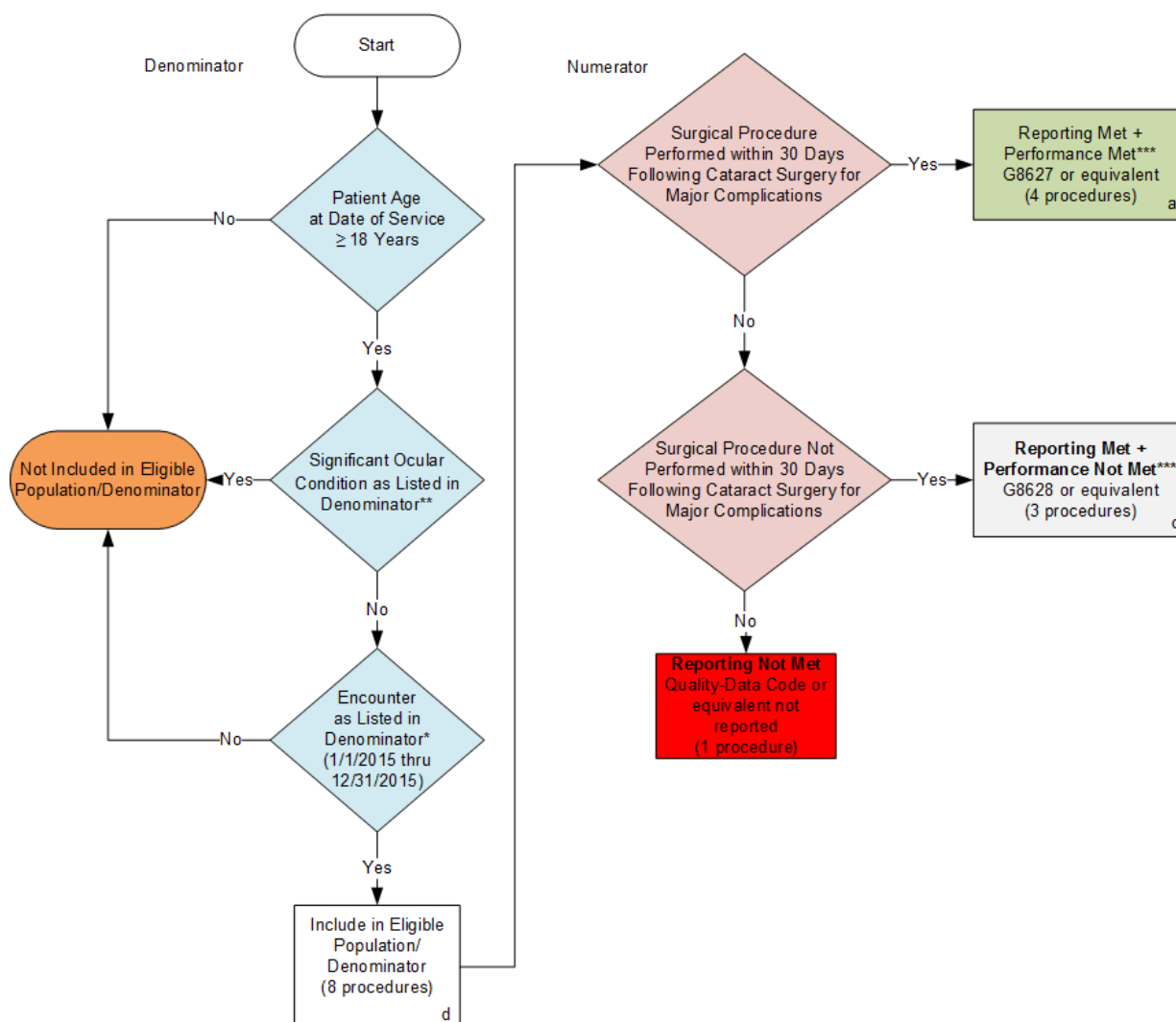


2015 Registry Individual Measure Flow
PQRS #192 NQF #0564: Cataracts: Complications within 30 Days Following Cataract Surgery
Requiring Additional Surgical Procedures



SAMPLE CALCULATIONS:

Reporting Rate=

$$\frac{\text{Performance Met (a=4 procedures)} + \text{Performance Not Met (c=3 procedures)}}{\text{Eligible Population / Denominator (d=8 procedures)}} = \frac{7 \text{ procedures}}{8 \text{ procedures}} = 87.50\%$$

Performance Rate=

$$\frac{\text{Performance Met (a=4 procedures)}}{\text{Reporting Numerator (7 procedures)}} = \frac{4 \text{ procedures}}{7 \text{ procedures}} = 57.14\%$$

*See the posted Measure Specification for specific coding and instructions to report this measure.

**Clinicians who indicate modifier 55, postoperative management only OR modifier 56, preoperative management only, will not qualify for this measure.

***A low calculated performance rate for this measure indicates better clinical control and care.

NOTE: Report Frequency- Procedure

2015 Registry Individual Measure Flow
PQRS #192 NQF #0564: Cataracts: Complications within 30 Days Following
Cataract Surgery Requiring Additional Surgical Procedures

Please refer to the specific section of the Measure Specification to identify the denominator and numerator information for use in reporting this Individual Measure.

1. Start with Denominator
2. Check Patient Age:
 - a. If the Age is greater than or equal to 18 at Date of Service and equals No during the measurement period, do not include in Eligible Patient Population. Stop Processing.
 - b. If the Age is greater than or equal to 18 at Date of Service and equals Yes during the measurement period, proceed to check Patient Diagnosis.
3. Check Patient Diagnosis:
 - a. If Diagnosis of Significant Ocular Condition as listed in the denominator equals No, proceed to check Encounter Performed.
 - b. If Diagnosis Significant Ocular Condition as listed in the denominator equals Yes, do not include in Eligible Patient Population. Stop Processing.
4. Check Encounter Performed:
 - a. If Encounter as listed in the denominator equals No, do not include in Eligible Patient Population. Stop Processing.
 - b. If Encounter as listed in the denominator equals Yes, include in the Eligible Population.
5. Denominator Population:
 - a. Denominator population is all Eligible Patients in the denominator. Denominator is represented as Denominator in the Sample Calculation listed at the end of this document. Letter d equals 8 procedures in the sample calculation.
6. Start Numerator
7. Check Surgical Procedure Performed within 30 Days Following Cataract Surgery for Major Complications:
 - a. If Surgical Procedure Performed within 30 Days Following Cataract Surgery for Major Complications equals Yes, include in Reporting Met and Performance Met.
 - b. Reporting Met and Performance Met letter is represented in the Reporting Rate and Performance Rate in the Sample Calculation listed at the end of this document. Letter a equals 4 procedures in Sample Calculation.
 - c. If Surgical Procedure Performed within 30 Days Following Cataract Surgery for Major Complications equals No, proceed to Surgical Procedure Not Performed within 30 Days Following Cataract Surgery for Major Complications
8. Check Surgical Procedure Not Performed within 30 Days Following Cataract Surgery for Major Complications:

- a. If Surgical Procedure Not Performed within 30 Days Following Cataract Surgery for Major Complications equals Yes, include in Reporting Met and Performance Not Met.
 - b. Reporting Met and Performance Not Met letter is represented in the Reporting Rate and Performance Rate in the Sample Calculation listed at the end of this document. Letter c equals 3 procedures in the Sample Calculation.
 - c. If Surgical Procedure Not Performed within 30 Days Following Cataract Surgery for Major Complications equals No, proceed to Reporting Not Met
9. Check Reporting Not Met
 - a. If Reporting Not Met equals No, Quality Data Code or equivalent not reported. 1 procedure has been subtracted from reporting numerator in the sample calculation.

SAMPLE CALCULATIONS:

Reporting Rate=

$$\frac{\text{Performance MeT (a=4 procedures) + Performance Not Met (c=3 procedures)}}{\text{Eligible Population / Denominator (d=8 procedures)}} = \frac{7 \text{ procedures}}{8 \text{ procedures}} = 87.50\%$$

Performance Rate=

$$\frac{\text{Performance MeT (a=4 procedures)}}{\text{Reporting Numerator (7 procedures)}} = \frac{4 \text{ procedures}}{7 \text{ procedures}} = 57.14\%$$