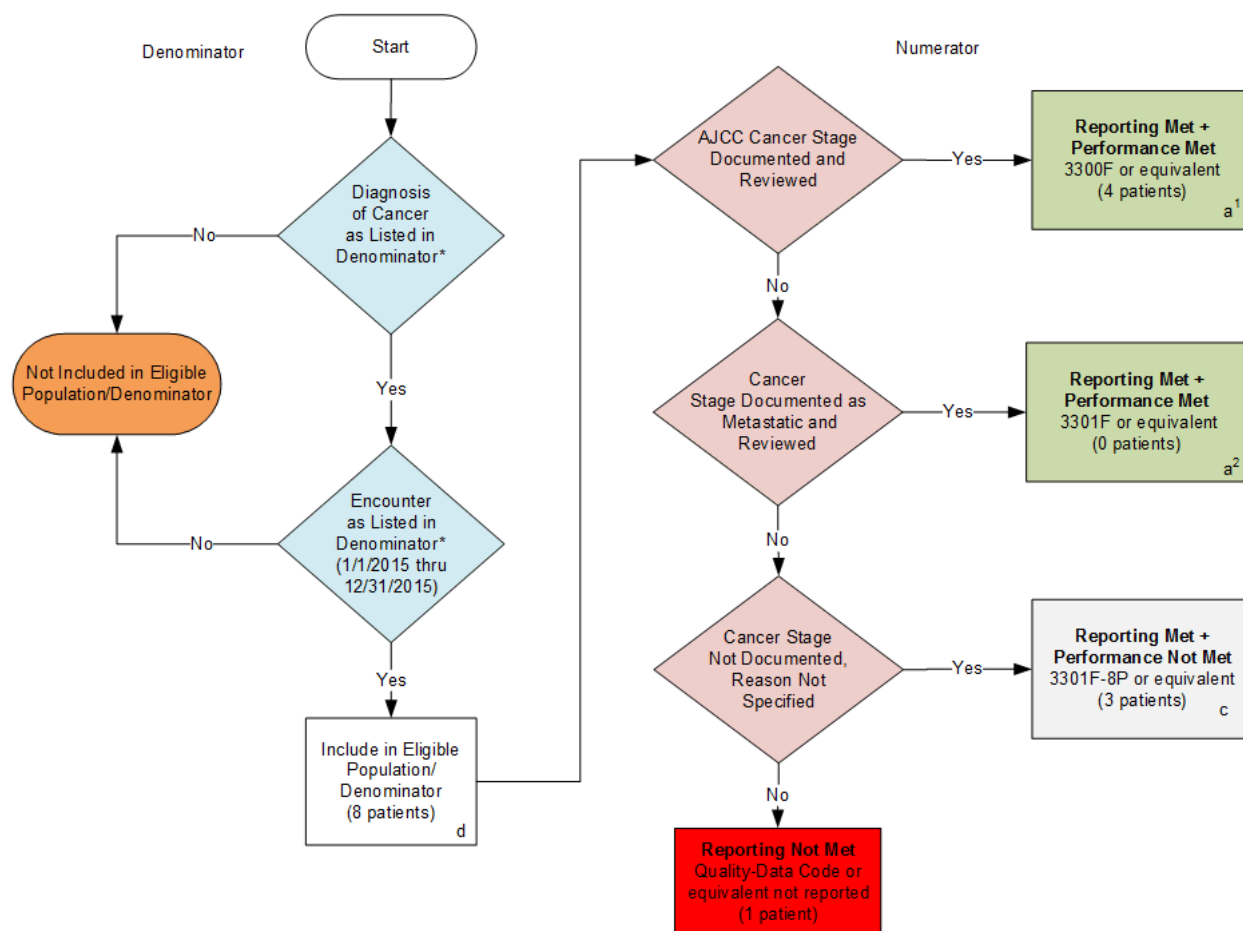


2015 Registry Individual Measure Flow
PQRS #194 NQF #0386: Oncology: Cancer Stage Documented



SAMPLE CALCULATIONS:

Reporting Rate=

Performance Met (a¹+a²=4 patients) + Performance Not Met (c=3 patients) = 7 patients = 87.50%
 Eligible Population / Denominator (d=8 patients) = 8 patients

Performance Rate=

Performance Met (a=4 patients) = 4 patients = 57.14%
 Reporting Numerator (7 patients) = 7 patients

*See the posted Measure Specification for specific coding and instructions to report this measure.
 NOTE: Report Frequency – Patient Process

CPT only copyright 2014 American Medical Association. All rights reserved

2015 Registry Individual Measure Flow
PQRS #194 NQF #0386: Oncology: Cancer Stage Documented

Please refer to the specific section of the Measure Specification to identify the denominator and numerator information for use in reporting this Individual Measure.

1. Start with Denominator
2. Check Patient Diagnosis:
 - a. If Diagnosis of Cancer as Listed in the Denominator equals No, do not include in Eligible Patient Population. Stop Processing.
 - b. If Diagnosis of Cancer as Listed in the Denominator equals Yes, proceed to check Encounter Performed.
3. Check Encounter Performed:
 - a. If Encounter as Listed in the Denominator equals No, do not include in Eligible Patient Population. Stop Processing.
 - b. If Encounter as Listed in the Denominator equals Yes, include in the Eligible Population.
4. Denominator Population:
 - a. Denominator population is all Eligible Patients in the denominator. Denominator is represented as Denominator in the Sample Calculation listed at the end of this document. Letter d equals 8 patients in the sample calculation.
5. Start Numerator
6. Check AJCC Cancer Stage Documented and Reviewed:
 - a. If AJCC Cancer Stage Documented and Reviewed equals Yes, include in Reporting Met and Performance Met.
 - b. Reporting Met and Performance Met letter is represented in the Reporting Rate and Performance Rate in the Sample Calculation listed at the end of this document. Letter a¹ equals 4 patients in Sample Calculation.
 - c. If AJCC Cancer Stage Documented and Reviewed equals No, proceed to Cancer Stage Documented as Metastatic and Reviewed.
7. Check Cancer Stage Documented as Metastatic and Reviewed:
 - a. If Cancer Stage Documented as Metastatic and Reviewed equals Yes, include in Reporting Met and Performance Met.
 - b. Reporting Met and Performance Met letter is represented in the Reporting Rate and Performance Rate in the Sample Calculation listed at the end of this document. Letter a² equals 0 patients in Sample Calculation.
 - c. If Cancer Stage Documented as Metastatic and Reviewed equals No, proceed to Cancer Stage Not Documented, Reason not Specified.
8. Check Cancer Stage Not Documented, Reason Not Specified:
 - a. If Cancer Stage Not Documented, Reason Not Specified equals Yes, include in Reporting Met and Performance Not Met.
 - b. Reporting Met and Performance Not Met letter is represented in the Reporting Rate and Performance Rate in the Sample Calculation listed at the end of this document. Letter c equals 3 patients in the Sample Calculation.

- c. If Cancer Stage Not Documented, Reason Not Specified equals No, proceed to Reporting not Met.

9. Check Reporting Not Met:

- a. If Reporting Not Met equals No, Quality Data Code or equivalent not reported. 1 patient has been subtracted from the reporting numerator in the sample calculation.

SAMPLE CALCULATIONS:

Reporting Rate=

$$\frac{\text{Performance MeT (a'+a''=4 patients)} + \text{Performance Not Met (c=3 patients)}}{\text{Eligible Population / Denominator (d=8 patients)}} = \frac{7 \text{ patients}}{8 \text{ patients}} = 87.50\%$$

Performance Rate=

$$\frac{\text{Performance MeT (a=4 patients)}}{\text{Reporting Numerator (7 patients)}} = \frac{4 \text{ patients}}{7 \text{ patients}} = 57.14\%$$