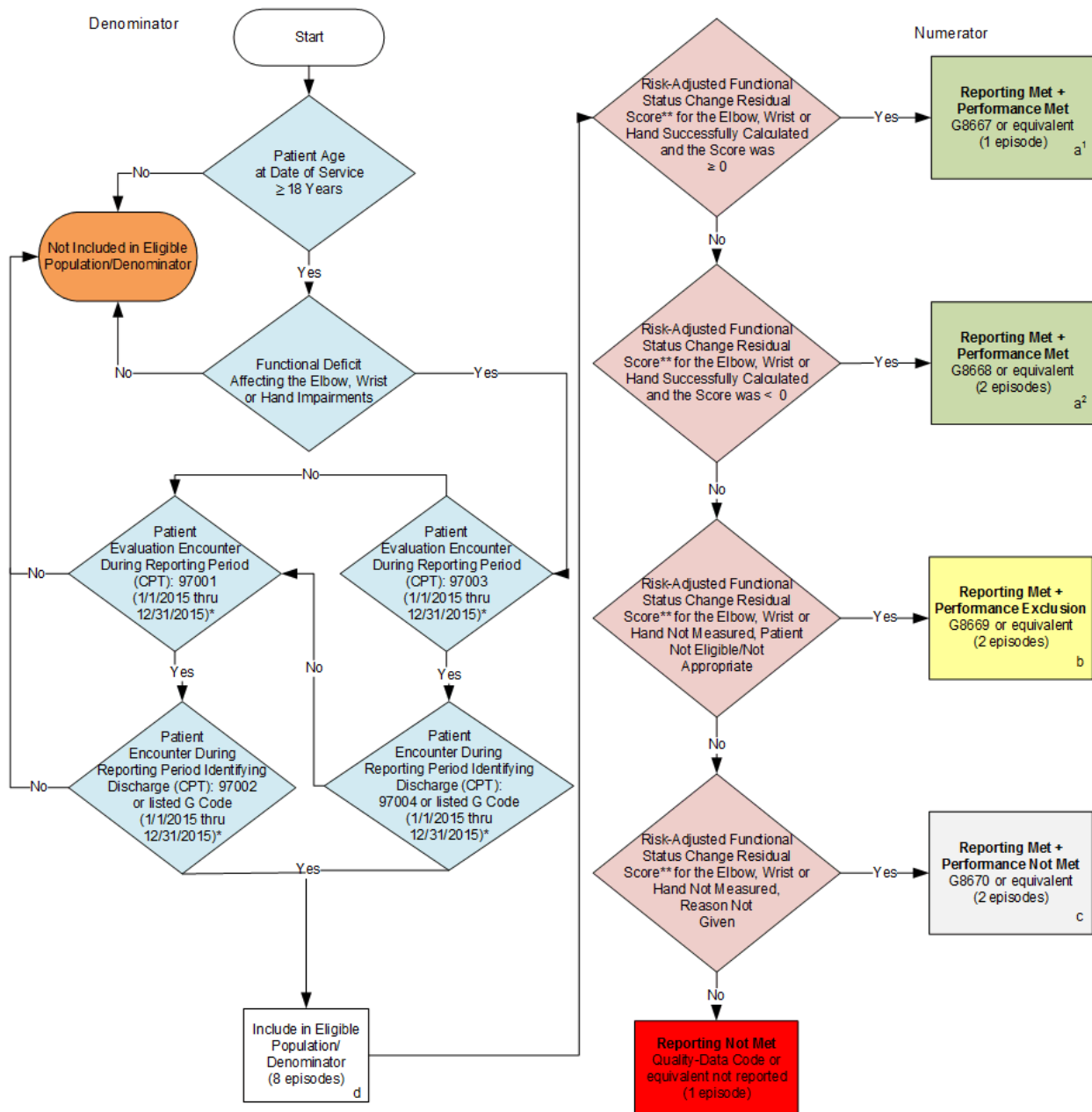


2015 Registry Individual Measure Flow
PQRS #222 NQF #0427: Functional Deficit: Change in Risk-Adjusted Functional Status
for Patients with Elbow, Wrist or Hand Impairments



SAMPLE CALCULATIONS:

Reporting Rate=
 Performance Met (a¹+a²=3 episodes) + Performance Exclusion (b=2 episodes) + Performance Not Met (c=2 episodes) = 7 episodes = 87.50%
 Eligible Population / Denominator (d=8 episodes) = 8 episodes

Performance Rate=
 Performance Met (a¹+a²=3 episodes) = 3 episodes = 60.00%
 Reporting Numerator (7 episodes) – Performance Exclusion (b=2 episodes) = 5 episodes

* See the posted Measure Specification for specific coding and instructions to report this measure.

** See the posted Measure Specification for specific patient score levels for this measure.

NOTE: Report Frequency - Episode

CPT only copyright 2014 American Medical Association. All rights reserved.

2015 Registry Individual Measure Flow
PQRS #222 NQF #0427: Functional Deficit: Change in Risk-Adjusted Functional
Status for Patients with Elbow, Wrist or Hand Impairments

Please refer to the specific section of the Measure Specification to identify the denominator and numerator information for use in reporting this Individual Measure.

1. Start with Denominator
2. Check Patient Age:
 - a. If the Age is greater than or equal to 18 years of age at Date of Service and equals No during the measurement period, do not include in Eligible Patient Population. Stop Processing.
 - b. If the Age is greater than or equal to 18 years of age at Date of Service and equals Yes during the measurement period, proceed to check Functional Deficit Affecting the Elbow, Wrist, or Hand Impairments.
3. Check Functional Deficit Affecting the Elbow, Wrist, or Hand Impairments:
 - a. If Functional Deficit Affecting the Elbow, Wrist, or Hand Impairments equals No, do not include in Eligible Patient Population. Stop Processing.
 - b. If Functional Deficit Affecting the Elbow, Wrist, or Hand Impairments equals Yes, check Patient Evaluation Encounter During Reporting Period (CPT) 97001.
4. Check Patient Evaluation Encounter During Reporting Period (CPT) 97001:
 - a. If Patient Evaluation Encounter During Reporting Period (CPT) 97001 equals No, proceed to Patient Encounter Evaluation during the reporting period (CPT) 97003.
 - b. If Patient Evaluation Encounter During Reporting Period (CPT) 97001 equals Yes, proceed to Patient Encounter During the Reporting Period Identifying Discharge (CPT) 97002.
5. Check Patient Encounter During the Reporting Period Identifying Discharge (CPT) 97002:
 - a. If Patient Encounter During the Reporting Period Identifying Discharge (CPT) 97002 and as listed in the denominator equals No, proceed to Patient Evaluation Encounter during Reporting Period (CPT) 97003.
 - b. If Patient Encounter During the Reporting Period Identifying Discharge (CPT) 97002 and as listed in the denominator equals Yes, include in the Eligible Population.
6. Check Patient Encounter Evaluation During the Reporting Period (CPT) 97003:
 - a. If Patient Encounter Evaluation During the Reporting Period (CPT) 97003 and as listed in the denominator equals No, do not include in Eligible Population. Stop Processing.
 - b. If Patient Encounter Evaluation During the Reporting Period (CPT) 97003 and as listed in the denominator equals Yes, proceed to Patient Encounter During Reporting Period Identifying Discharge (CPT) 97004.

7. Check Patient Encounter During Reporting Period Identifying Discharge (CPT) 97004:
 - a. If Patient Encounter During Reporting Period Identifying Discharge (CPT) 97004 as listed in the denominator equals No, do not include in Eligible Population. Stop Processing.
 - b. If Patient Encounter During Reporting Period Identifying Discharge (CPT) 97004 as listed in the denominator equals Yes, proceed to include in the Eligible Population.
8. Denominator Population:
 - a. Denominator population is all Eligible Patients in the denominator. Denominator is represented as Denominator in the Sample Calculation listed at the end of this document. Letter d equals 8 episodes in the sample calculation.
9. Start Numerator
10. Check Risk-Adjusted Functional Status Change Residual Score for the Elbow, Wrist, or Hand Successfully Calculated and the Score was ≥ 0 :
 - a. If Risk-Adjusted Functional Status Change Residual Score for the Elbow, Wrist, or Hand Successfully Calculated and the Score was ≥ 0 equals Yes, include in Reporting Met and Performance Met.
 - b. Reporting Met and Performance Met letter is represented in the Reporting Rate and Performance Rate in the Sample Calculation listed at the end of this document. Letter a¹ equals 1 episode in Sample Calculation.
 - c. If Risk-Adjusted Functional Status Change Residual Score for the Elbow, Wrist, or Hand Successfully Calculated and the Score was ≥ 0 equals No, proceed to Risk-Adjusted Functional Status Change Residual Score for the Elbow, Wrist, or Hand Successfully Calculated and the Score was < 0 .
11. Check Risk-Adjusted Functional Status Change Residual Score for the Elbow, Wrist, or Hand Successfully Calculated and the Score was < 0 :
 - a. If Risk-Adjusted Functional Status Change Residual Score for the Elbow, Wrist, or Hand Successfully Calculated and the Score was < 0 equals Yes, include in Reporting Met and Performance Met.
 - b. Reporting Met and Performance Met letter is represented in the Reporting Rate and Performance Rate in the Sample Calculation listed at the end of this document. Letter a² equals 2 episodes in the Sample Calculation.
 - c. If Risk-Adjusted Functional Status Change Residual Score for the Elbow, Wrist, or Hand Successfully Calculated and the Score was < 0 equals No, proceed to Risk-Adjusted Functional Status Change Residual Score for the Elbow, Wrist, or Hand Not Measured, Patient Not Eligible/Not Appropriate.
12. Check to Risk-Adjusted Functional Status Change Residual Score for the Elbow, Wrist, or Hand Not Measured, Patient Not Eligible/Not Appropriate:
 - a. If Risk-Adjusted Functional Status Change Residual Score for the Elbow, Wrist, or Hand Not Measured, Patient Not Eligible/Not Appropriate equals Yes, include in the Reporting Met and Performance Exclusion.
 - b. Reporting Met and Performance Exclusion letter is represented in the Reporting Rate and Performance Rate in the Sample Calculation listed at the end of this document. Letter b equals 2 episodes in the Sample Calculation.
 - c. If Risk-Adjusted Functional Status Change Residual Score for the Elbow, Wrist, or Hand Not Measured, Patient Not Eligible/Not Appropriate equals No, proceed

to Risk-Adjusted Functional Status Change Residual Score for the Elbow, Wrist, or Hand Not Measured, Reason Not Given.

13. Check Risk-Adjusted Functional Status Change Residual Score for the Elbow, Wrist, or Hand Not Measured, Reason Not Given:
 - a. If Risk-Adjusted Functional Status Change Residual Score for the Elbow, Wrist, or Hand Not Measured, Reason Not Given equals Yes, include in Reporting Met and Performance Not Met.
 - b. Reporting Met and Performance Not Met letter is represented in the Reporting Rate and Performance Rate in the Sample Calculation listed at the end of this document. Letter c equals 2 episodes in the Sample Calculation.
 - c. If Risk-Adjusted Functional Status Change Residual Score for the Elbow, Wrist, or Hand Not Measured, Reason Not Given equals No, proceed to Reporting Not Met.
14. Check Reporting Not Met:
 - a. If Reporting Not Met equals No, Quality Data Code or equivalent not reported. 1 episode has been subtracted from the reporting numerator in the sample calculation.

SAMPLE CALCULATIONS:

Reporting Rate=

$$\frac{\text{Performance MeT (a'+a''=3 episodes) + Performance Exclusion (b=2 episodes) + Performance Not Met (c=2 episodes)}}{\text{Eligible Population / Denominator (d=8 episodes)}} = \frac{7 \text{ episodes}}{8 \text{ episodes}} = 87.50\%$$

Performance Rate=

$$\frac{\text{Performance MeT (a'+a''=3 episodes)}}{\text{Reporting Numerator (7 episodes) - Performance Exclusion (b=2 episodes)}} = \frac{3 \text{ episodes}}{5 \text{ episodes}} = 60.00\%$$