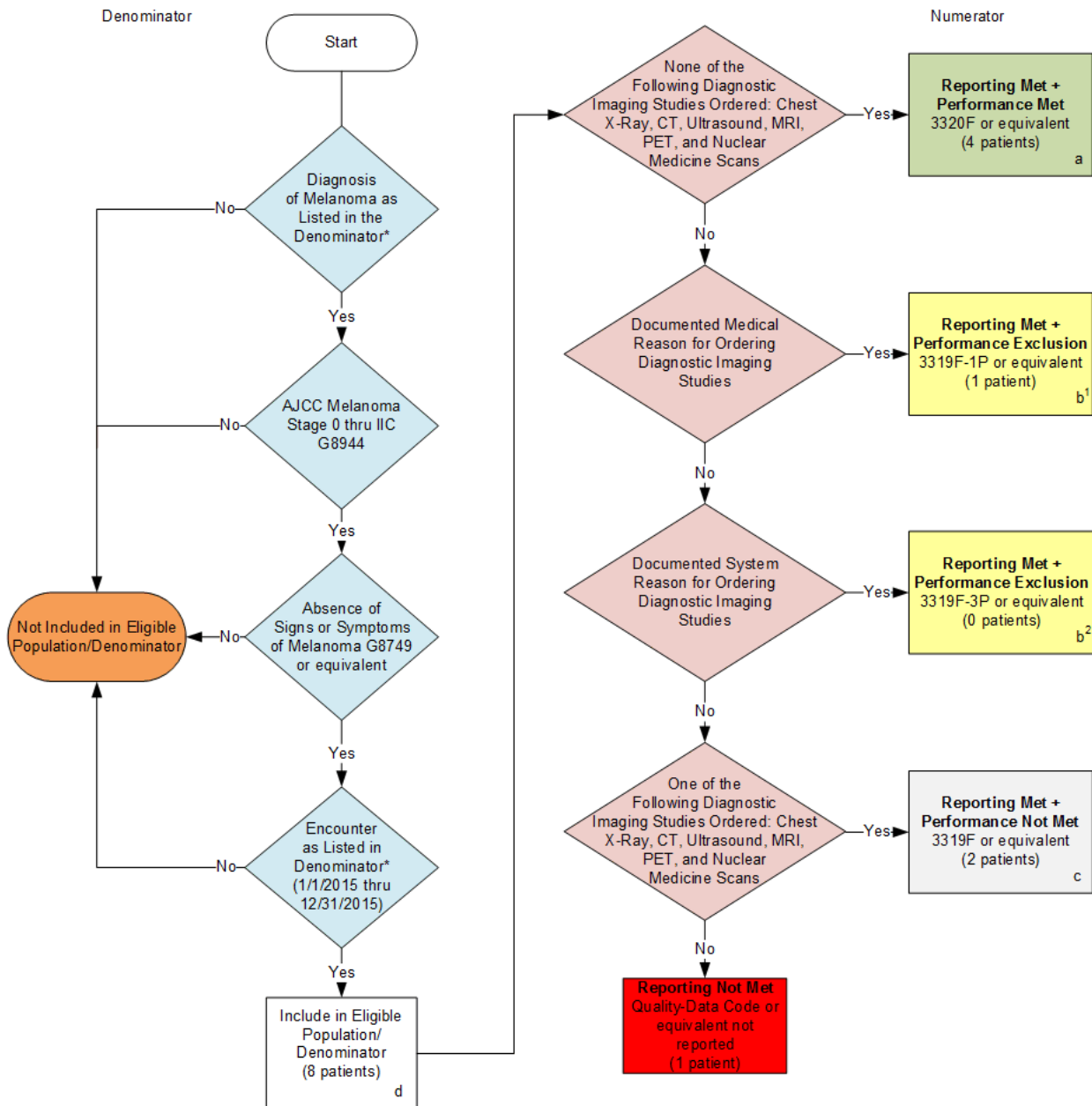


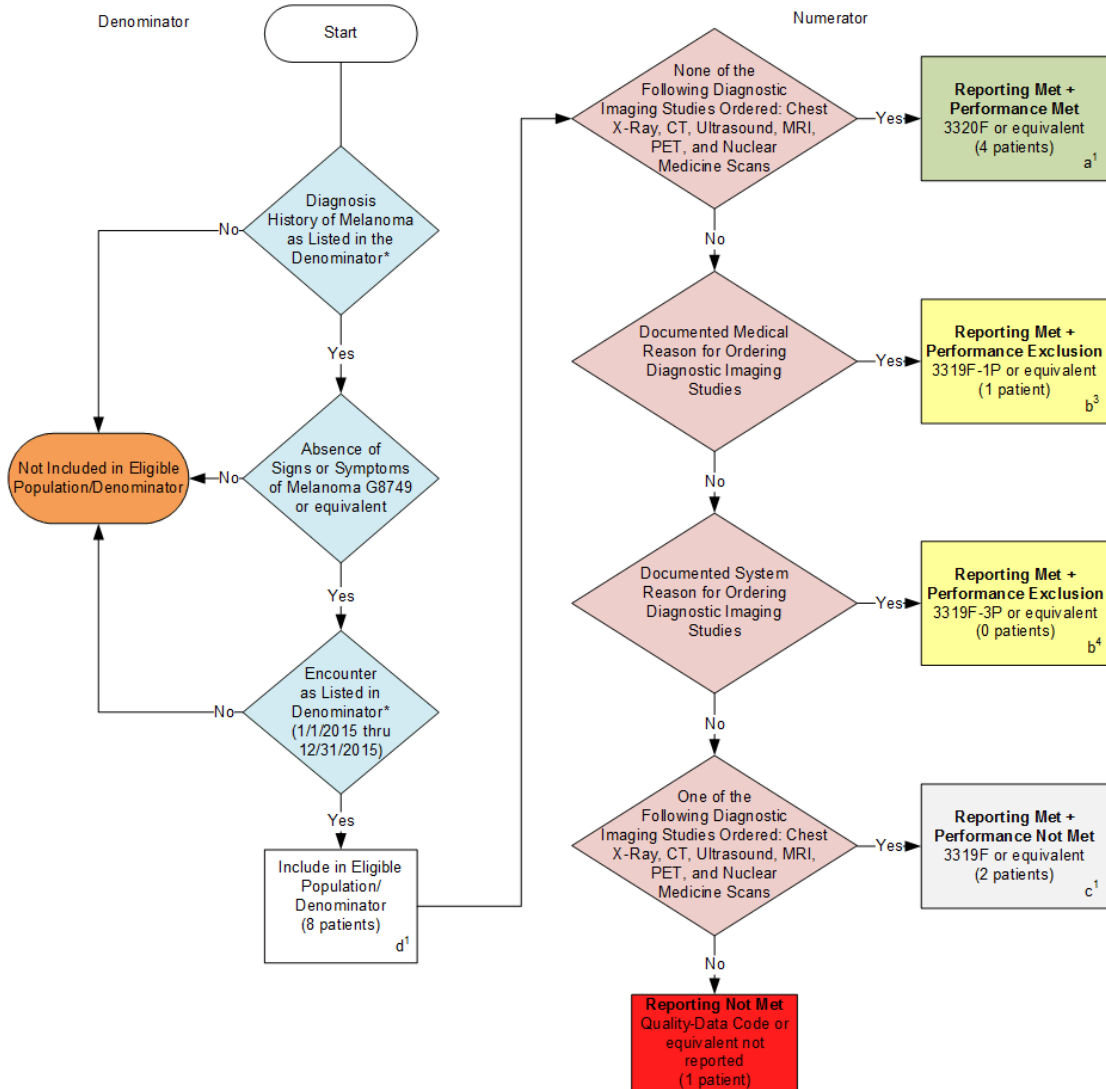
2015 Registry Individual Measure Flow
PQRS #224 NQF #0562: Melanoma: Overutilization of Imaging Studies in Melanoma
Reporting Option One



*See the posted Measure Specification for specific coding and instructions to report this measure.
 NOTE: Reporting Frequency: Patient-process

CPT only copyright 2014 American Medical Association. All rights reserved.

2015 Registry Individual Measure Flow
PQRS #224 NQF #0562: Melanoma: Overutilization of Imaging Studies in Melanoma
Reporting Option Two



*See the posted Measure Specification for specific coding and instructions to report this measure.
 NOTE: Reporting Frequency: Patient-process

CPT only copyright 2014 American Medical Association. All rights reserved.

2015 Registry Individual Measure Flow
PQRS #224 NQF #0562: Melanoma: Overutilization of Imaging Studies in Melanoma

SAMPLE CALCULATIONS:

Reporting Rate=

$$\frac{\text{Performance Met (a+a}^1\text{=8 patients) + Performance Exclusion (b}^1\text{+b}^2\text{+b}^3\text{+b}^4\text{=2 patient) + Performance Not Met (c+c}^1\text{=2 patients)}}{\text{Eligible Population / Denominator (d+d}^1\text{=16 patients)}} = \frac{14 \text{ patients}}{16 \text{ patients}} = 87.50\%$$

Performance Rate=

$$\frac{\text{Performance Met (a+a}^1\text{=8 patients)}}{\text{Reporting Numerator (14 patients) - Performance Exclusion (b}^1\text{+b}^2\text{+b}^3\text{+b}^4\text{=2 patient)}} = \frac{8 \text{ patients}}{12 \text{ patients}} = 66.66\%$$

*See the posted Measure Specification for specific coding and instructions to report this measure.

This measure contains 2 Reporting Criteria, although as the Sample Calculation indicates, there is **ONLY** one reporting rate and one performance rate for this measure.

NOTE: Reporting Frequency: Patient-process

CPT only copyright 2014 American Medical Association. All rights reserved.

2015 Registry Individual Measure Flow
PQRS #224 NQF #0562: Melanoma: Overutilization of Imaging Studies in
Melanoma

Please refer to the specific section of the Measure Specification to identify the denominator and numerator information for use in reporting this Individual Measure.

Reporting Option One

1. Start with Denominator
2. Check Patient Diagnosis:
 - a. If Diagnosis of Melanoma as Listed in the Denominator equals No, do not include in Eligible Patient Population. Stop Processing.
 - b. If Diagnosis of Melanoma as Listed in the Denominator equals Yes, proceed to check AJCC Melanoma Stage 0 through IIC.
3. Check AJCC Melanoma Stage 0 through IIC:
 - c. If Diagnosis of Melanoma and AJCC Melanoma Stage 0 through IIC as Listed in the Denominator equals No, do not include in Eligible Patient Population. Stop Processing.
 - d. If Diagnosis of Melanoma and AJCC Melanoma Stage 0 through IIC as Listed in the Denominator equals Yes, proceed to check Absence of Signs or Symptoms of Melanoma.
4. Check Absence of Signs or Symptoms of Melanoma:
 - a. If Absence of Signs or Symptoms of Melanoma equals No, do not include in Eligible Patient Population. Stop Processing.
 - b. If Absence of Signs or Symptoms of Melanoma equals Yes, proceed to check Encounter Performed.
5. Check Encounter Performed:
 - a. If Encounter as Listed in the Denominator equals No, do not include in Eligible Patient Population. Stop Processing.
 - b. If Encounter as Listed in the Denominator equals Yes, include in the Eligible population.
6. Denominator Population:
 - a. Denominator population is all Eligible Patients in the denominator. Denominator is represented as Denominator in the Sample Calculation listed at the end of this document. Letter d equals 8 patients in the sample calculation.
7. Start Numerator
8. Check None of the Following Diagnostic Imaging Studies Ordered: Chest X-Ray, CT, Ultrasound, MRI, PET, and Nuclear Medicine Scans:
 - a. If None of the Following Diagnostic Imaging Studies Ordered: Chest X-Ray, CT, Ultrasound, MRI, PET, and Nuclear Medicine Scans equals Yes, include in Reporting Met and Performance Met.
 - b. Reporting Met and Performance Met letter is represented in the Reporting Rate and Performance Rate in the Sample Calculation listed at the end of this document. Letter a equals 4 patients in Sample Calculation.

- c. If None of the Following Diagnostic Imaging Studies Ordered: Chest X-Ray, CT, Ultrasound, MRI, PET, and Nuclear Medicine Scans equals No, proceed to Documented Medical Reason for Ordering Diagnostic Imaging Study.
- 9. Check Documented Medical Reason for Ordering Diagnostic Imaging Studies:
 - a. If Documented Medical Reason for Ordering Diagnostic Imaging Studies equals Yes, include in Reporting Met and Performance Exclusion.
 - b. Reporting Met and Performance Exclusion letter is represented in the Reporting Rate and Performance Rate in the Sample Calculation listed at the end of this document. Letter b¹ equals 1 patient in the Sample Calculation.
 - c. If Documented Medical Reason for Ordering Diagnostic Imaging Studies equals No, proceed to Documented System Reason for Ordering Diagnostic Imaging Studies.
- 10. Check Documented System Reason for Ordering Diagnostic Imaging Studies:
 - a. If Documented System Reason for Ordering Diagnostic Imaging Studies equals Yes, include in Reporting Met and Performance Exclusion.
 - b. Reporting Met and Performance Exclusion letter is represented in the Reporting Rate and Performance Rate in the Sample Calculation listed at the end of this document. Letter b² equals 0 patients in the Sample Calculation.
 - c. If Documented System Reason for Ordering Diagnostic Imaging Studies equals No, proceed to One of the Following Diagnostic Imaging Studies Ordered: Chest X-Ray, CT, Ultrasound, MRI, PET, and Nuclear Medicine Scans.
- 11. Check One of the Following Diagnostic Imaging Studies Ordered: Chest X-Ray, CT, Ultrasound, MRI, PET, and Nuclear Medicine Scans:
 - a. If One of the Following Diagnostic Imaging Studies Ordered: Chest X-Ray, CT, Ultrasound, MRI, PET, and Nuclear Medicine Scans equals Yes, include in the Reporting Met and Performance Not Met.
 - b. Reporting Met and Performance Not Met letter is represented in the Reporting Rate in the Sample Calculation listed at the end of this document. Letter c equals 2 patients in the Sample Calculation.
 - c. If One of the Following Diagnostic Imaging Studies Ordered: Chest X-Ray, CT, Ultrasound, MRI, PET, and Nuclear Medicine Scans equals No, proceed to Reporting Not Met.
- 12. Check Reporting Not Met
 - a. If Reporting Not Met equals No, Quality Data Code or equivalent not reported. 1 patient has been subtracted from reporting numerator in the sample calculation.

2015 Registry Individual Measure Flow
PQRS #224 NQF #0562: Melanoma: Overutilization of Imaging Studies in
Melanoma

Please refer to the specific section of the Measure Specification to identify the denominator and numerator information for use in reporting this Individual Measure.

Reporting Option Two

13. Start with Denominator

14. Check Patient Diagnosis:

- a. If Diagnosis History of Melanoma as Listed in the Denominator equals No, do not include in Eligible Patient Population. Stop Processing.
- b. If Diagnosis History of Melanoma as Listed in the Denominator equals Yes, proceed to check Absence of Signs or Symptoms of Melanoma.

15. Check Absence of Signs or Symptoms of Melanoma:

- a. If Absence of Signs or Symptoms of Melanoma equals No, do not include in Eligible Patient Population. Stop Processing.
- b. If Absence of Signs or Symptoms of Melanoma equals Yes, proceed to check Encounter Performed.

16. Check Encounter Performed:

- a. If Encounter as Listed in the Denominator equals No, do not include in Eligible Patient Population. Stop Processing.
- b. If Encounter as Listed in the Denominator equals Yes, include in the Eligible population.

17. Denominator Population:

- a. Denominator population is all Eligible Patients in the denominator. Denominator is represented as Denominator in the Sample Calculation listed at the end of this document. Letter d¹ equals 8 patients in the sample calculation.

18. Start Numerator

19. Check None of the Following Diagnostic Imaging Studies Ordered: Chest X-Ray, CT, Ultrasound, MRI, PET, and Nuclear Medicine Scans:

- a. If None of the Following Diagnostic Imaging Studies Ordered: Chest X-Ray, CT, Ultrasound, MRI, PET, and Nuclear Medicine Scans equals Yes, include in Reporting Met and Performance Met.
- b. Reporting Met and Performance Met letter is represented in the Reporting Rate and Performance Rate in the Sample Calculation listed at the end of this document. Letter a¹ equals 4 patients in Sample Calculation.
- c. If None of the Following Diagnostic Imaging Studies Ordered: Chest X-Ray, CT, Ultrasound, MRI, PET, and Nuclear Medicine Scans equals No, proceed to Documented Medical Reason for Ordering Diagnostic Imaging Study.

20. Check Documented Medical Reason for Ordering Diagnostic Imaging Studies:

- a. If Documented Medical Reason for Ordering Diagnostic Imaging Studies equals Yes, include in Reporting Met and Performance Exclusion.

- b. Reporting Met and Performance Exclusion letter is represented in the Reporting Rate and Performance Rate in the Sample Calculation listed at the end of this document. Letter b^3 equals 1 patient in the Sample Calculation.
 - c. If Documented Medical Reason for Ordering Diagnostic Imaging Studies equals No, proceed to Documented System Reason for Ordering Diagnostic Imaging Studies.
21. Check Documented System Reason for Ordering Diagnostic Imaging Studies:
- a. If Documented System Reason for Ordering Diagnostic Imaging Studies equals Yes, include in Reporting Met and Performance Exclusion.
 - b. Reporting Met and Performance Exclusion letter is represented in the Reporting Rate and Performance Rate in the Sample Calculation listed at the end of this document. Letter b^4 equals 0 patients in the Sample Calculation.
 - c. If Documented System Reason for Ordering Diagnostic Imaging Studies equals No, proceed to One of the Following Diagnostic Imaging Studies Ordered: Chest X-Ray, CT, Ultrasound, MRI, PET, and Nuclear Medicine Scans.
22. Check One of the Following Diagnostic Imaging Studies Ordered: Chest X-Ray, CT, Ultrasound, MRI, PET, and Nuclear Medicine Scans:
- a. If One of the Following Diagnostic Imaging Studies Ordered: Chest X-Ray, CT, Ultrasound, MRI, PET, and Nuclear Medicine Scans equals Yes, include in the Reporting Met and Performance Not Met.
 - b. Reporting Met and Performance Not Met letter is represented in the Reporting Rate in the Sample Calculation listed at the end of this document. Letter c^1 equals 2 patients in the Sample Calculation.
 - c. If One of the Following Diagnostic Imaging Studies Ordered: Chest X-Ray, CT, Ultrasound, MRI, PET, and Nuclear Medicine Scans equals No, proceed to Reporting Not Met.
23. Check Reporting Not Met
- a. If Reporting Not Met equals No, Quality Data Code or equivalent not reported. 1 patient has been subtracted from reporting numerator in the sample calculation.

SAMPLE CALCULATIONS:

Reporting Rate=

Performance Met ($a+a^1=8$ patients) + Performance Exclusion ($b^1+b^2+b^3+b^4=2$ patient) + Performance Not Met ($c+c^1=2$ patients) = 14 patients = **87.50%**
 Eligible Population / Denominator ($d+d^1=16$ patients) = 16 patients

Performance Rate=

Performance Met ($a+a^1=8$ patients) = 8 patients = **66.66%**
 Reporting Numerator (14 patients) - Performance Exclusion ($b^1+b^2+b^3+b^4=2$ patient) = 12 patients