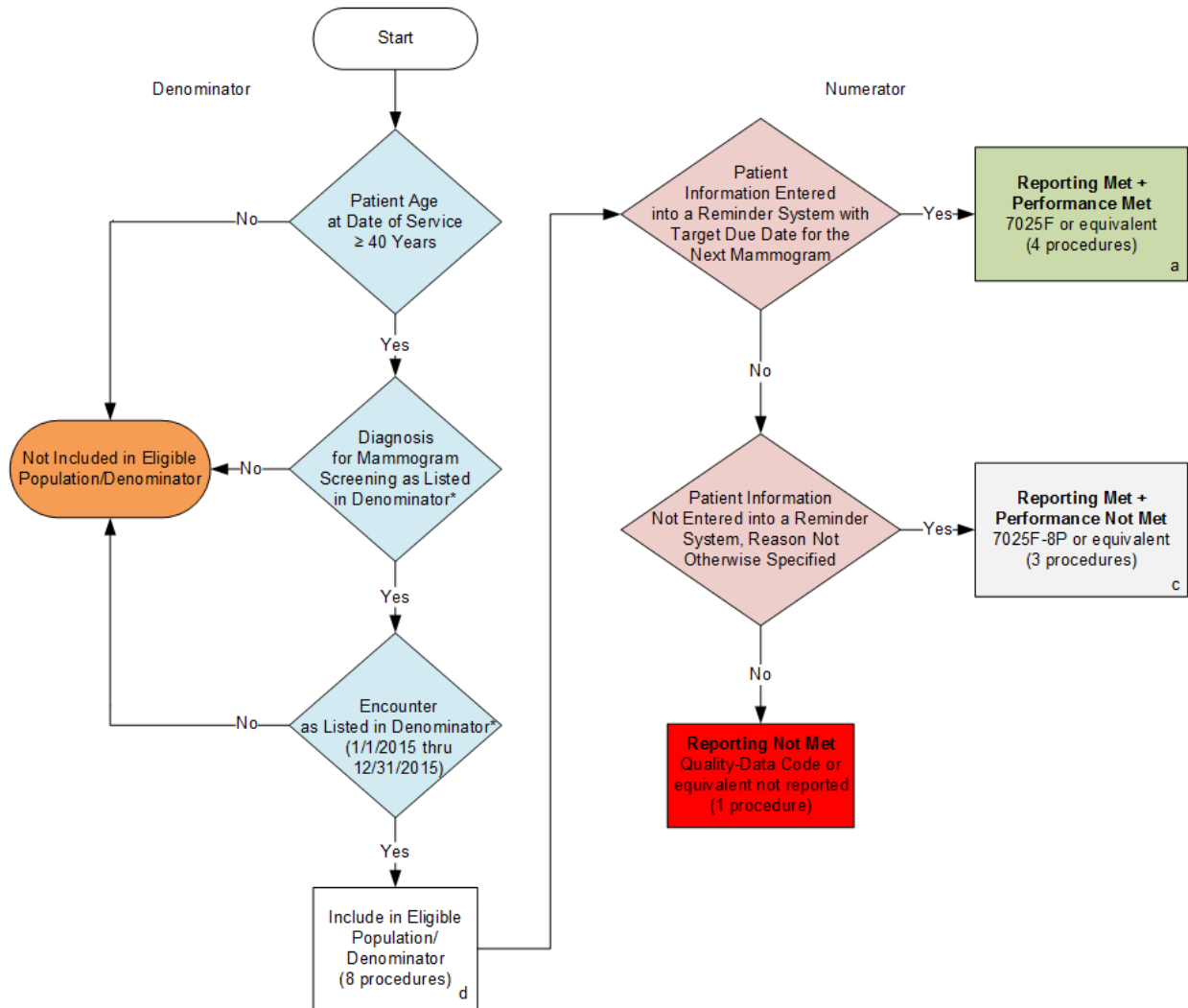


2015 Claims/Registry Individual Measure Flow
PQRS #225 NQF # 0509: Radiology: Reminder System for Screening Mammograms



SAMPLE CALCULATIONS:

Reporting Rate=

Performance Met (a=4 procedures) + Performance Not Met (c=3 procedures) = 7 procedures = 87.50%
 Eligible Population / Denominator (c=8 procedures) = 8 procedures

Performance Rate=

Performance Met (a=4 procedures) = 4 procedures = 57.14%
 Reporting Numerator (7 procedures) = 7 procedures

*See the posted Measure Specification for specific coding and instructions to report this measure.

NOTE: Reporting Frequency: Procedure

CPT only copyright 2014 American Medical Association. All rights reserved

2015 Claims/Registry Individual Measure Flow
PQRS #225 NQF #0509: Radiology: Reminder System for Screening
Mammograms

Please refer to the specific section of the Measure Specification to identify the denominator and numerator information for use in reporting this Individual Measure.

1. Start with Denominator
2. Check Patient Age:
 - a. If the Age is greater than or equal to 40 years of age on Date of Service equals No during the measurement period, do not include in Eligible Patient Population. Stop Processing.
 - b. If the Age is greater than or equal to 40 years of age on Date of Service equals Yes during the measurement period, proceed to check Patient Diagnosis.
3. Check Patient Diagnosis:
 - a. If Diagnosis for Mammogram Screening as Listed in the Denominator equals No, do not include in Eligible Patient Population. Stop Processing.
 - b. If Diagnosis for Mammogram Screening as Listed in the Denominator equals Yes, proceed to check Encounter Performed.
4. Check Encounter Performed:
 - a. If Encounter as Listed in the Denominator equals No, do not include in Eligible Patient Population. Stop Processing.
 - b. If Encounter as Listed in the Denominator equals Yes, include in the Eligible population.
5. Denominator Population:
 - a. Denominator population is all Eligible Patients in the denominator. Denominator is represented as Denominator in the Sample Calculation listed at the end of this document. Letter d equals 8 procedures in the sample calculation.
6. Start Numerator
7. Check Patient Information Entered into a Reminder System with Target Due Date for the Next Mammogram:
 - a. If Patient Information Entered into a Reminder System with Target Due Date for the Next Mammogram equals Yes, include in Reporting Met and Performance Met.
 - b. Reporting Met and Performance Met letter is represented in the Reporting Rate and Performance Rate in the Sample Calculation listed at the end of this document. Letter a equals 4 procedures in Sample Calculation.
 - c. If Patient Information Entered into a Reminder System with Target Due Date for the Next Mammogram equals No, proceed to Patient Information Not Entered into a Reminder System, Reason Not Otherwise Specified.

8. Check Patient Information Not Entered into a Reminder System ,Reason Not Otherwise Specified:
- a. If Patient Information Not Entered into a Reminder System, Reason Not Otherwise, Specified equals Yes, include in Reporting Met and Performance Not Met.
 - b. Reporting Met and Performance Not Met letter is represented in the Reporting Rate in the Sample Calculation listed at the end of this document. Letter c equals 3 procedures in the Sample Calculation.
 - c. If Patient Information Not Entered into a Reminder System, Reason Not Otherwise Specified equals No, proceed to Reporting Not Met.
9. Check Reporting Not Met
- a. If Reporting Not Met equals No, Quality Data Code or equivalent not reported. 1 patient has been subtracted from the reporting numerator in the sample calculation.

SAMPLE CALCULATIONS:

Reporting Rate=

$$\frac{\text{Performance Met (a=4 procedures)} + \text{Performance Not Met (c=3 procedures)}}{\text{Eligible Population / Denominator (c=8 procedures)}} = \frac{7 \text{ procedures}}{8 \text{ procedures}} = 87.50\%$$

Performance Rate=

$$\frac{\text{Performance Met (a=4 procedures)}}{\text{Reporting Numerator (7 procedures)}} = \frac{4 \text{ procedures}}{7 \text{ procedures}} = 57.14\%$$