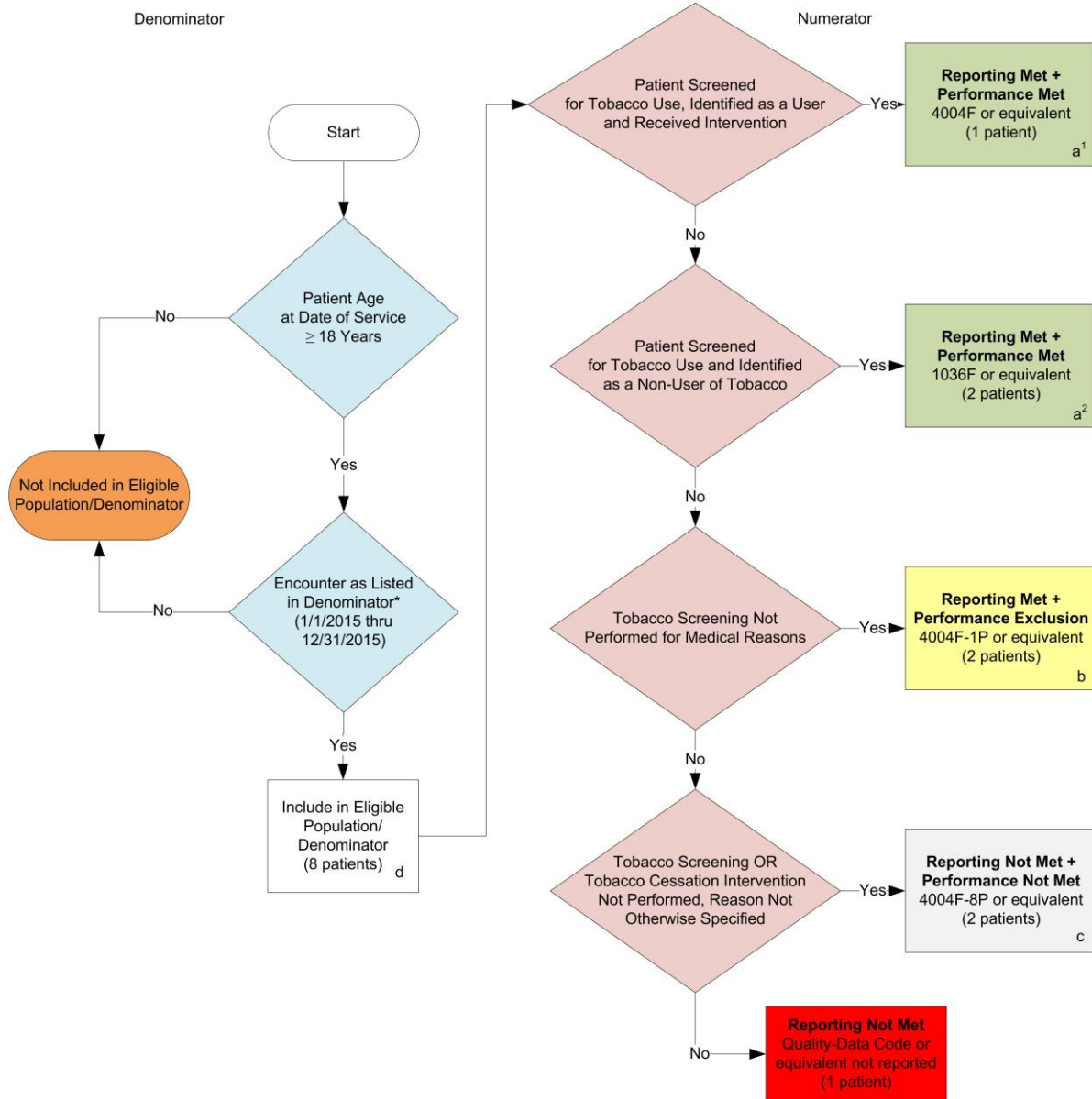


2015 Claims/Registry Individual Measure Flow
PQRS #226 NQF #0028: Preventive Care and Screening: Tobacco Use: Screening and Cessation Intervention



SAMPLE CALCULATIONS:

Reporting Rate=

Performance Met (a¹+a²=3 patients) + Performance Exclusion (b=2 patients) + Performance Not Met (c=2 patients) = 7 patients = 87.50%
 Eligible Population / Denominator (d=8 patients) = 8 patients

Performance Rate=

Performance Met (a¹+a²=3 patients) = 3 patients = 60.00%
 Reporting Numerator (7 patients) – Performance Exclusion (b=2 patients) = 5 patients

* See the posted Measure Specification for specific coding and instructions to report this measure.

** In the event that a patient is screened for tobacco use and identified as a user but did not receive tobacco cessation counseling report 4004F with 8P

NOTE: Reporting Frequency: Patient-process

CPT only copyright 2014 American Medical Association. All rights reserved.
v1

2015 Claims/Registry Individual Measure Flow
PQRS #226 NQF #0028: Preventive Care and Screening: Tobacco Use: Screening
and Cessation Intervention

Please refer to the specific section of the Measure Specification to identify the denominator and numerator information for use in reporting this Individual Measure.

1. Start with Denominator
2. Check Patient Age:
 - a. If the Age is greater than or equal to 18 years of age on Date of Service equals No during the measurement period, do not include in Eligible Patient Population. Stop Processing.
 - b. If the Age is greater than or equal to 18 years of age on Date of Service equals Yes during the measurement period, proceed to check Encounter Performed.
3. Check Encounter Performed:
 - a. If Encounter as Listed in the Denominator equals No, do not include in Eligible Patient Population. Stop Processing.
 - b. If Encounter as Listed in the Denominator equals Yes, include in the Eligible Population.
4. Denominator Population:
 - a. Denominator population is all Eligible Patients in the denominator. Denominator is represented as Denominator in the Sample Calculation listed at the end of this document. Letter d equals 8 patients in the sample calculation.
5. Start Numerator
6. Check Patient Screened for Tobacco Use, Identified as a User and Received Intervention:
 - a. If Patient Screened for Tobacco Use, Identified as a User and Received Intervention equals Yes, include in Reporting Met and Performance Met.
 - b. Reporting Met and Performance Met letter is represented in the Reporting Rate and Performance Rate in the Sample Calculation listed at the end of this document. Letter a¹ equals 1 patient in Sample Calculation.
 - c. If Patient Screened for Tobacco Use, Identified as User and and Received Intervention equals No, proceed to Patient Screened for Tobacco Use and Identified as a Non-User of Tobacco.
7. Check Patient Screened for Tobacco Use and Identified as a Non-User of Tobacco:
 - a. If Patient Screened for Tobacco Use and Identified as a Non-User of Tobacco equals Yes, include in Reporting Met and Performance Met.
 - b. Reporting Met and Performance Met letter is represented in the Reporting Rate and Performance Rate in the Sample Calculation listed at the end of this document. Letter a² equals 2 patients in Sample Calculation.
 - c. If Patient Screened for Tobacco Use and Identified as a Non-User of Tobacco equals No, proceed to Tobacco Screening Not performed for Medical Reasons

8. Check Tobacco Screening Not Performed for Medical Reasons:
 - a. If Tobacco Screening Not Performed for Medical Reasons equals Yes, include in Reporting Met and Performance Exclusion.
 - b. Reporting Met and Performance Exclusion letter is represented in the Reporting Rate and Performance Rate in the Sample Calculation listed at the end of this document. Letter b equals 2 patients in the Sample Calculation.
 - c. If Tobacco Screening Not Performed for Medical Reasons equals No, proceed to Tobacco Screening or Tobacco Cessation Intervention Not Performed, Reason Not Otherwise Specified.
9. Check Tobacco Screening or Tobacco Cessation Intervention Not Performed, Reason Not Otherwise Specified:
 - a. If Tobacco Screening or Tobacco Cessation Intervention Not Performed, Reason Not Otherwise equals Yes, include in the Reporting Met and Performance Not Met.
 - b. Reporting Met and Performance Not Met letter is represented in the Reporting Rate in the Sample Calculation listed at the end of this document. Letter c equals 2 patients in the Sample Calculation.
 - c. If Tobacco Screening or Tobacco Cessation Intervention Not Performed, Reason Not Otherwise Specified equals No, proceed to Reporting Not Met.
10. Check Reporting Not Met
 - a. If Reporting Not Met equals No, Quality Data Code or equivalent not reported. 1 patient has been subtracted from the reporting numerator in the sample calculation.

SAMPLE CALCULATIONS:

Reporting Rate=

$$\frac{\text{Performance Met (a}^1\text{+a}^2\text{=3 patients) + Performance Exclusion (b=2 patients) + Performance Not Met (c=2 patients)}}{\text{Eligible Population / Denominator (d=8 patients)}} = \frac{7 \text{ patients}}{8 \text{ patients}} = 87.50\%$$

Performance Rate=

$$\frac{\text{Performance Met (a}^1\text{+a}^2\text{=3 patients)}}{\text{Reporting Numerator (7 patients) – Performance Exclusion (b=2 patients)}} = \frac{3 \text{ patients}}{5 \text{ patients}} = 60.00\%$$