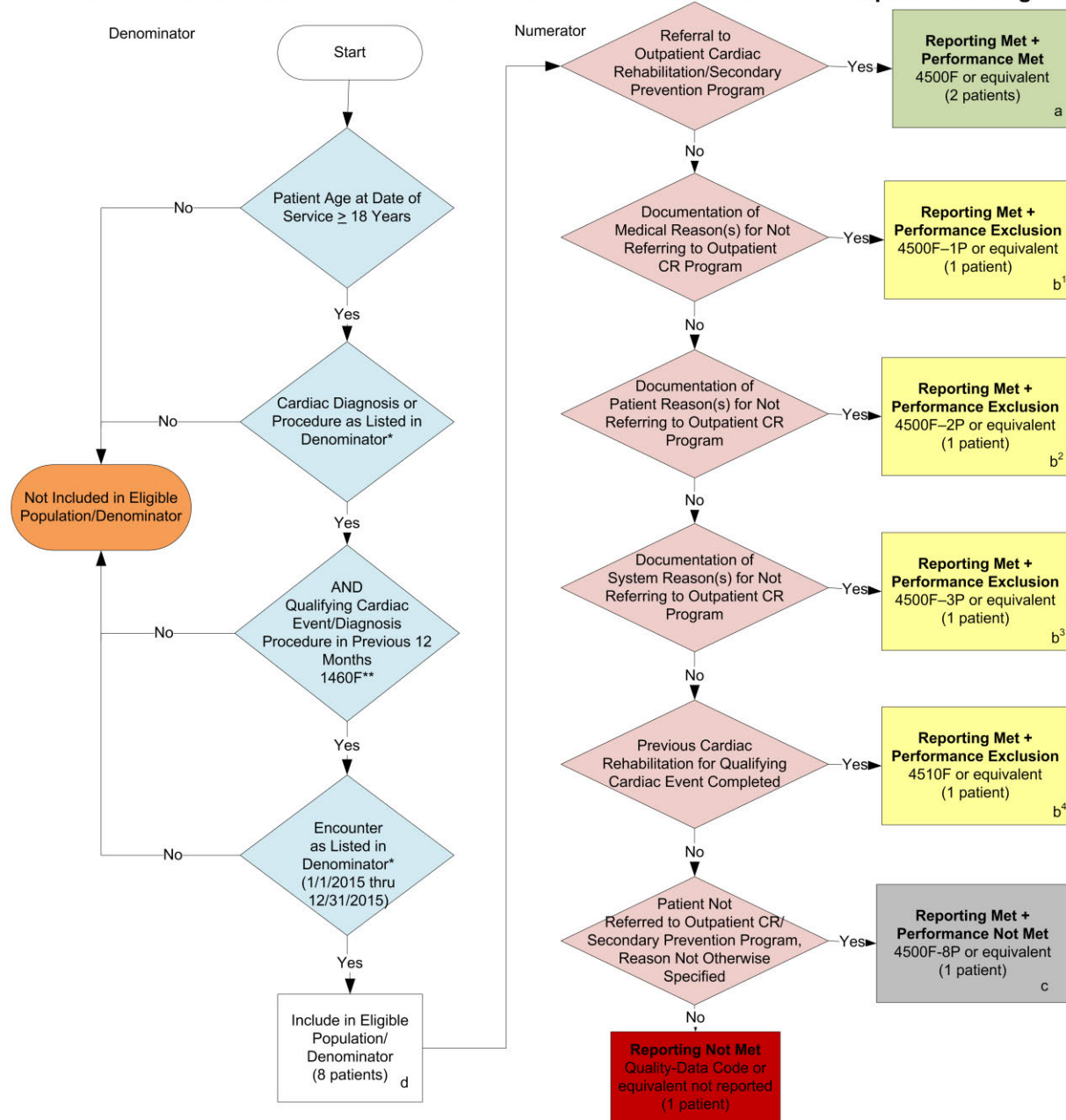


2015 Registry Individual Measures Flow

Measure #243 NQF #0643: Cardiac Rehabilitation Patient Referral from an Outpatient Setting



SAMPLE CALCULATIONS:

Reporting Rate=

Performance Met (a=2 patients) + Performance Exclusion (b¹+b²+b³+b⁴=4 patients) + Performance Not Met (c=1 patient) = 7 patients = 87.50%
 Eligible Population / Denominator (d=8 patients) = 8 patients

Performance Rate=

Performance Met (a=2 patients) = 2 patients = 66.67%
 Reporting Numerator (7 patients) – Performance Exclusion (b¹+b²+b³+b⁴=4 patients) = 3 patients

*See the posted Measure Specification for specific coding and instructions to report this measure.

NOTE: Reporting Frequency: Patient-process

**Eligibility Criteria for Qualifying Cardiac Event/Diagnosis in Previous 12 Months has been moved to the denominator of this measure, to identify the measure's intended eligible population more accurately.

CPT only copyright 2014 American Medical Association. All rights reserved

v1.

2015 Registry Individual Measure Flow
PQRS #243 NQF #0643: Cardiac Rehabilitation Patient Referral from an Outpatient Setting

Please refer to the specific section of the Measure Specification to identify the denominator and numerator information for use in reporting this Individual Measure.

1. Start with Denominator
2. Check Patient Age:
 - a. If the Age is greater than or equal to 18 years of age on Date of Service equals No during the measurement period, do not include in Eligible Patient Population. Stop Processing.
 - b. If the Age is greater than or equal to 18 years of age on Date of Service equals Yes during the measurement period, proceed to check Patient Diagnosis.
3. Check Patient Diagnosis:
 - a. If Cardiac Diagnosis or Procedure as Listed in the Denominator equals No, do not include in Eligible Patient Population. Stop Processing.
 - b. If Cardiac Diagnosis or Procedure as Listed in the Denominator equals Yes, proceed to check AND Qualifying Cardiac Event/Diagnosis or Procedure in Previous 12 Months 1460F.
4. Check AND Qualifying Cardiac Event/Diagnosis or Procedure in Previous 12 Months 1460F:
 - a. If AND Qualifying Cardiac Event/Diagnosis or Procedure in Previous 12 Months 1460F equals No, do not include in Eligible Patient Population. Stop Processing.
 - b. If AND Qualifying Cardiac Event/Diagnosis or Procedure in Previous 12 Months 1460F equals Yes, proceed to Encounter Performed.
5. Check Encounter Performed:
 - a. If Encounter as Listed in the Denominator equals No, do not include in Eligible Patient Population. Stop Processing.
 - b. If Encounter as Listed in the Denominator equals Yes, include in the Eligible population.
6. Denominator Population:
 - a. Denominator population is all Eligible Patients in the denominator. Denominator is represented as Denominator in the Sample Calculation listed at the end of this document. Letter d equals 8 patients in the sample calculation.
7. Start Numerator
8. Check Referral to Outpatient Cardiac Rehabilitation/Secondary Prevention Program:
 - a. If Referral to Outpatient Cardiac Rehabilitation/Secondary Prevention Program equals Yes, include in Reporting Met and Performance Met.
 - b. Reporting Met and Performance Met letter is represented in the Reporting Rate and Performance Rate in the Sample Calculation listed at the end of this document. Letter a equals 2 patients in Sample Calculation.
 - c. If Referral to Outpatient Cardiac Rehabilitation/Secondary Prevention Program equals No, proceed to Documentation of Medical Reason(s) for Not Referring to Outpatient (CR) Program.

9. Check Documentation of Medical Reason(s) for Not Referring to Outpatient CR Program:
 - a. If Documentation of Medical Reason(s) for Not Referring to Outpatient CR Program equals Yes, include in Reporting Met and Performance Exclusion.
 - b. Reporting Met and Performance Exclusion letter is represented in the Reporting Rate and Performance Rate in the Sample Calculation listed at the end of this document. Letter b¹ equals 1 patient in the Sample Calculation.
 - c. If Documentation of Medical Reason(s) for Not Referring to Outpatient CR Program equals No, proceed to Documentation of Patient Reason(s) for Not Referring to Outpatient CR Program.
10. Check Documentation of Patient Reason(s) for Not Referring to Outpatient CR Program:
 - a. If Documentation of Patient Reason(s) for Not Referring to Outpatient CR Program equals Yes, include in Reporting Met and Performance Exclusion.
 - b. Reporting Met and Performance Exclusion letter is represented in the Reporting Rate and Performance Rate in the Sample Calculation listed at the end of this document. Letter b² equals 1 patient in the Sample Calculation.
 - c. If Documentation of Patient Reason(s) for Not Referring to Outpatient CR Program equals No, proceed to Documentation of System Reason(s) for Not Referring to Outpatient CR Program.
11. Check Documentation of System Reason(s) for Not Performing Not Referring to Outpatient CR Program:
 - a. If Documentation of System Reason(s) for Not Referring to Outpatient CR Program equals Yes, include in Reporting Met and Performance Exclusion.
 - b. Reporting Met and Performance Exclusion letter is represented in the Reporting Rate and Performance Rate in the Sample Calculation listed at the end of this document. Letter b³ equals 1 patient in the Sample Calculation.
 - c. If Documentation of System Reason(s) for Not Referring to Outpatient CR Program equals No, proceed to Previous Cardiac Rehabilitation for Qualifying Cardiac Event Completed.
12. Check Previous Cardiac Rehabilitation for Qualifying Cardiac Event Completed:
 - a. If Previous Cardiac Rehabilitation for Qualifying Cardiac Event Completed equals Yes, include in Reporting Met and Performance Exclusion.
 - b. Reporting Met and Performance Exclusion letter is represented in the Reporting Rate and Performance Rate in the Sample Calculation listed at the end of this document. Letter b⁴ equals 1 patient in the Sample Calculation.
 - c. If Previous Cardiac Rehabilitation for Qualifying Cardiac Event Completed equals No, proceed to Patient Not Referred to Outpatient CR/Secondary Prevention Program, Reason Not Otherwise Specified.
13. Check Patient Not Referred to Outpatient CR/Secondary Prevention Program, Reason Not Otherwise Specified:
 - a. If Patient Not Referred to Outpatient CR/Secondary Prevention Program, Reason Not Otherwise Specified equals Yes, include in Reporting Met and Performance Not Met.
 - b. Reporting Met and Performance Not Met letter is represented in the Reporting Rate in the Sample Calculation listed at the end of this document. Letter c equals 1 patient in the Sample Calculation.
 - c. If Patient Not Referred to Outpatient CR/Secondary Prevention Program, Reason Not Otherwise Specified equals No, proceed to Reporting Not Met.

14. Check Reporting Not Met:
- If Reporting Not Met, the Quality Data Code or equivalent was not reported. 1 patient has been subtracted from the reporting numerator in the sample calculation.

SAMPLE CALCULATIONS:

Reporting Rate=

$$\frac{\text{Performance Met (a=2 patients)} + \text{Performance Exclusion (b}^1+\text{b}^2+\text{b}^3+\text{b}^4=4 \text{ patients)} + \text{Performance Not Met (c=1 patient)}}{\text{Eligible Population / Denominator (d=8 patients)}} = \frac{7 \text{ patients}}{8 \text{ patients}} = 87.50\%$$

Performance Rate=

$$\frac{\text{Performance Met (a=2 patients)}}{\text{Reporting Numerator (7 patients) - Performance Exclusion (b}^1+\text{b}^2+\text{b}^3+\text{b}^4=4 \text{ patients)}} = \frac{2 \text{ patients}}{3 \text{ patients}} = 66.67\%$$