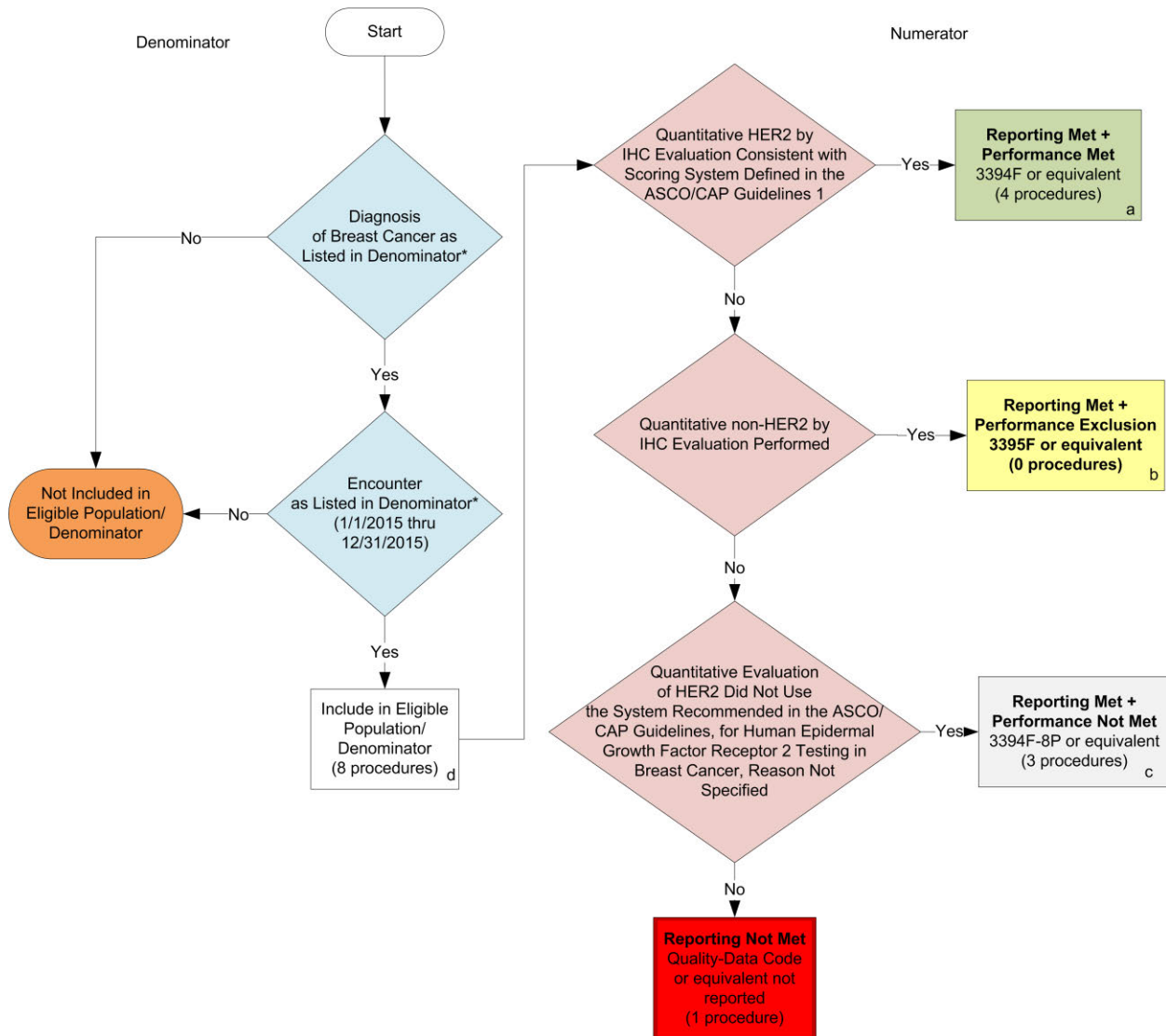


**2015 Claims Individual Measure Flow**  
**PQRS #251: Quantitative Immunohistochemical (IHC) Evaluation of Human Epidermal Growth Factor Receptor 2 Testing (HER2) for Breast Cancer Patients**



**SAMPLE CALCULATIONS:**

**Reporting Rate=**

Performance Met (a=4 procedures) + Performance Exclusion (b=0 procedures) + Performance Not Met (c=3 procedures) = 7 procedures = 87.50%  
 Eligible Population / Denominator (d=8 procedures) = 8 procedures

**Performance Rate=**

Performance Met (a=4 procedures) = 4 procedures = 57.14%  
 Reporting Numerator (7 procedures) - Performance Exclusion (b=0 procedures) = 7 procedures

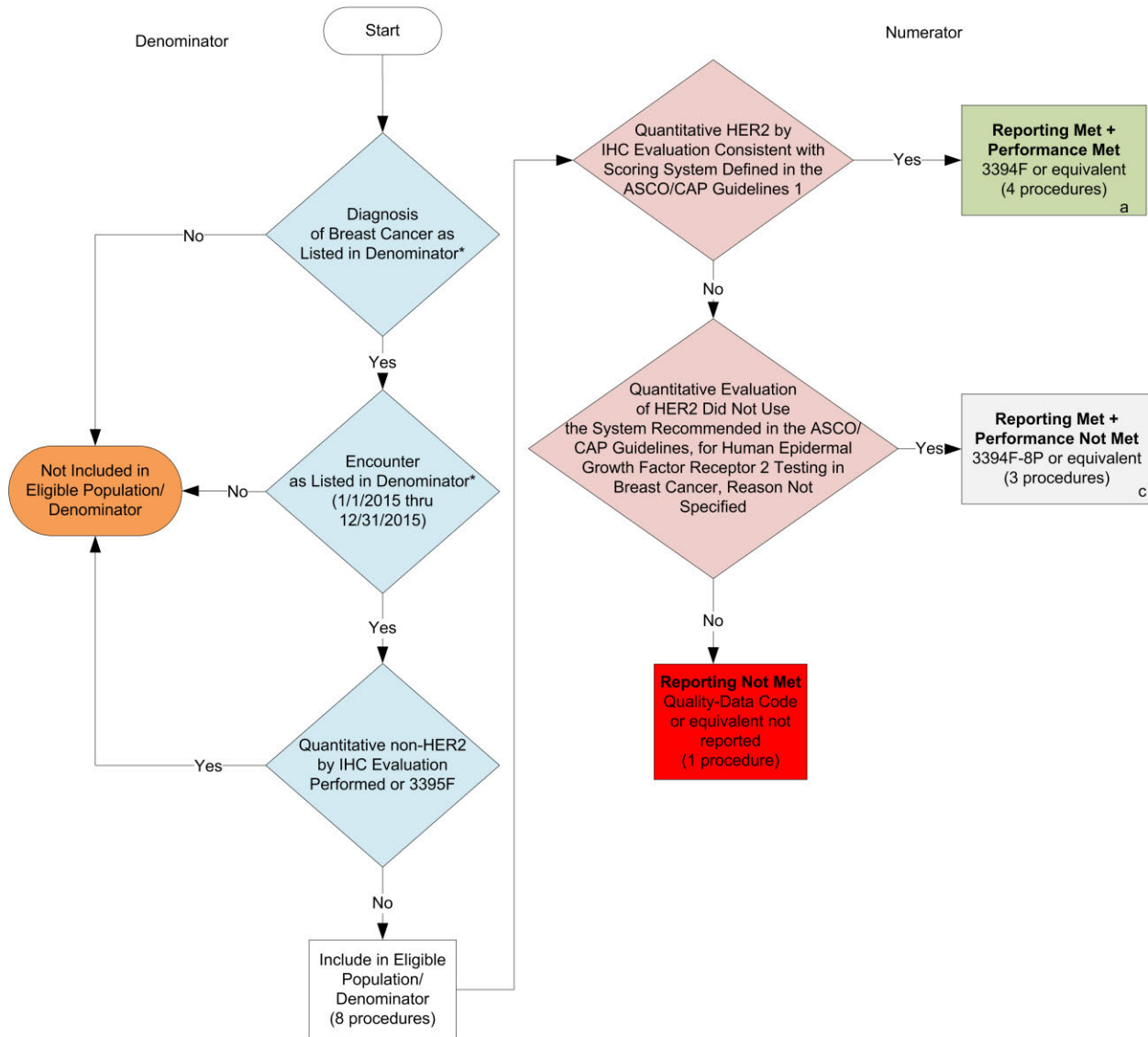
\*See the posted Measure Specification for specific coding and instructions to report this measure.

NOTE: Reporting Frequency: Procedure

CPT only copyright 2014 American Medical Association. All rights reserved

v1

**2015 Registry Individual Measure Flow**  
**PQRS #251: Quantitative Immunohistochemical (IHC) Evaluation of Human Epidermal Growth Factor Receptor 2 Testing (HER2) for Breast Cancer Patients**



**SAMPLE CALCULATIONS:**

**Reporting Rate=**

Performance Met (a=4 procedures) + Performance Not Met (c=3 procedures) = 7 procedures = 87.50%  
 Eligible Population / Denominator (d=8 procedures) = 8 procedures

**Performance Rate=**

Performance Met (a=4 procedures) = 4 procedures = 57.14%  
 Reporting Numerator (7 procedures) = 7 procedures

\*See the posted Measure Specification for specific coding and instructions to report this measure.

NOTE: Reporting Frequency: Procedure

CPT only copyright 2014 American Medical Association. All rights reserved

**2015 Claims Individual Measure Flow**  
**PQRS #251: Quantitative Immunohistochemical (IHC) Evaluation of Human Epidermal Growth Factor Receptor 2 Testing (HER2) for Breast Cancer Patients**

Please refer to the specific section of the Measure Specification to identify the denominator and numerator information for use in reporting this Individual Measure.

1. Start with Denominator
2. Check Patient Diagnosis:
  - a. If Diagnosis of Breast Cancer as Listed in the Denominator equals No, do not include in Eligible Patient Population. Stop Processing.
  - b. If Diagnosis of Breast Cancer as Listed in the Denominator equals Yes, proceed to check Encounter Performed.
3. Check Encounter Performed:
  - a. If Encounter as Listed in the Denominator equals No, do not include in Eligible Patient Population. Stop Processing.
  - b. If Encounter as Listed in the Denominator equals Yes, include in the Eligible population.
4. Denominator Population
  - a. Denominator population is all Eligible Patients in the denominator. Denominator is represented as Denominator in the Sample Calculation listed at the end of this document. Letter d equals 8 procedures in the sample calculation.
5. Start Numerator
6. Check Quantitative HER2 by IHC Evaluation Consistent with Scoring System Defined in the ASCO/CAP Guidelines 1:
  - a. If Quantitative HER2 by IHC Evaluation Consistent with Scoring System Defined in the ASCO/CAP Guidelines 1 equals Yes, include in Reporting Met and Performance Met.
  - b. Reporting Met and Performance Met letter is represented in the Reporting Rate and Performance Rate in the Sample Calculation listed at the end of this document. Letter a equals 4 procedures in Sample Calculation.
  - c. If Quantitative HER2 by IHC Evaluation Consistent with Scoring System Defined in the ASCO/CAP Guidelines 1 equals No, proceed to Check Quantitative non-HER2 by IHC Evaluation performed.
7. Check Quantitative non-HER2 by IHC Evaluation performed:
  - a. If Quantitative non-HER2 by IHC Evaluation performed equals Yes, include in Reporting Met and Performance Exclusion.
  - b. Reporting Met and Performance Exclusion letter is represented in the Reporting Rate and Performance Rate in the Sample Calculation listed at the end of this document. Letter b equals 0 procedures in the Sample Calculation.
  - c. If Quantitative non-HER2 by IHC Evaluation performed equals No, proceed to Check Quantitative Evaluation of HER2 Did Not Use the System Recommended in the ASCO/CAP Guidelines for Human Epidermal Growth Factor Receptor 2 Testing in Breast Cancer, Reason Not Specified.

8. Check Quantitative Evaluation of H:ER2 Did Not Use the System Recommended in the ASCO/CAP Guidelines for Human Epidermal Growth Factor Receptor 2 Testing in Breast Cancer, Reason Not Specified
  - a. If Quantitative Evaluation of HER2 Did Not Use the System Recommended in the ASCO/CAP Guidelines for Human Epidermal Growth Factor Receptor 2 Testing in Breast Cancer, Reason Not Specified equals Yes, include in the Reporting Met and Performance Not Met.
  - b. Reporting Met and Performance Not Met letter is represented in the Reporting Rate in the Sample Calculation listed at the end of this document. Letter c equals 3 procedures in the Sample Calculation.
  - c. If Quantitative Evaluation of HER2 Did Not Use the System Recommended in the ASCO/CAP Guidelines for Human Epidermal Growth Factor Receptor 2 Testing in Breast Cancer, Reason Not Specified equals No, proceed to Check Reporting Not Met.
9. Check Reporting Not Met
  - a. If Reporting Not Met equals No, Quality Data Code or equivalent not reported. 1 procedure has been subtracted from reporting numerator in the sample calculation.

#### SAMPLE CALCULATIONS:

##### Reporting Rate=

$$\frac{\text{Performance Met (a=4 procedures)} + \text{Performance Exclusion (b=0 procedures)} + \text{Performance Not Met (c=3 procedures)}}{\text{Eligible Population / Denominator (d=8 procedures)}} = \frac{7 \text{ procedures}}{8 \text{ procedures}} = 87.50\%$$

##### Performance Rate=

$$\frac{\text{Performance Met (a=4 procedures)}}{\text{Reporting Numerator (7 procedures) - Performance Exclusion (b=0 procedures)}} = \frac{4 \text{ procedures}}{7 \text{ procedures}} = 57.14\%$$

**2015 Registry Individual Measure Flow**  
**PQRS #251: Quantitative Immunohistochemical (IHC) Evaluation of Human Epidermal Growth Factor Receptor 2 Testing (HER2) for Breast Cancer Patients**

Please refer to the specific section of the Measure Specification to identify the denominator and numerator information for use in reporting this Individual Measure.

10. Start with Denominator
11. Check Patient Diagnosis:
  - a. If Diagnosis of Breast Cancer as Listed in the Denominator equals No, do not include in Eligible Patient Population. Stop Processing.
  - b. If Diagnosis of Breast Cancer as Listed in the Denominator equals Yes, proceed to check Encounter Performed.
12. Check Encounter Performed:
  - a. If Encounter as Listed in the Denominator equals No, do not include in Eligible Patient Population. Stop Processing.
  - b. If Encounter as Listed in the Denominator equals Yes, proceed to check Quantitative non-HER2 by IHC Evaluation Performed.
13. Check Quantitative non-HER2 by IHC Evaluation Performed:
  - a. If Encounter as Listed in the Denominator equals Yes, do not include in Eligible Patient Population. Stop Processing.
  - b. If Encounter as Listed in the Denominator equals No, include in the Eligible population.
14. Denominator Population
  - a. Denominator population is all Eligible Patients in the denominator. Denominator is represented as Denominator in the Sample Calculation listed at the end of this document. Letter d equals 8 procedures in the sample calculation.
15. Start Numerator
16. Check Quantitative HER2 by IHC Evaluation Consistent with Scoring System Defined in the ASCO/CAP Guidelines 1:
  - a. If Quantitative HER2 by IHC Evaluation Consistent with Scoring System Defined in the ASCO/CAP Guidelines<sup>1</sup> equals Yes, include in Reporting Met and Performance Met.
  - b. Reporting Met and Performance Met letter is represented in the Reporting Rate and Performance Rate in the Sample Calculation listed at the end of this document. Letter a equals 4 procedures in Sample Calculation.
  - c. If Quantitative HER2 by IHC Evaluation Consistent with Scoring System Defined in the ASCO/CAP Guidelines 1 equals No, proceed to Check Quantitative Evaluation of HER2 Did Not Use the System Recommended in the ASCO/CAP Guidelines for Human Epidermal Growth Factor Receptor 2 Testing in Breast Cancer, Reason Not Specified.

17. Check Quantitative Evaluation of HER2 Did Not Use the System Recommended in the ASCO/CAP Guidelines for Human Epidermal Growth Factor Receptor 2 Testing in Breast Cancer, Reason Not Specified
  - a. If Quantitative Evaluation of HER2 Did Not Use the System Recommended in the ASCO/CAP Guidelines for Human Epidermal Growth Factor Receptor 2 Testing in Breast Cancer, Reason Not Specified equals Yes, include in the Reporting Met and Performance Not Met.
  - b. Reporting Met and Performance Not Met letter is represented in the Reporting Rate in the Sample Calculation listed at the end of this document. Letter c equals 3 procedures in the Sample Calculation.
  - c. If Quantitative Evaluation of HER2 Did Not Use the System Recommended in the ASCO/CAP Guidelines for Human Epidermal Growth Factor Receptor 2 Testing in Breast Cancer, Reason Not Specified equals No, proceed to Reporting Not Met.
18. Check Reporting Not Met
  - a. If Reporting Not Met equals No, Quality Data Code or equivalent not reported. 1 procedure has been subtracted from reporting numerator in the sample calculation.

**SAMPLE CALCULATIONS:**

**Reporting Rate=**

$$\frac{\text{Performance Met (a=4 procedures)} + \text{Performance Not Met (c=3 procedures)}}{\text{Eligible Population / Denominator (d=8 procedures)}} = \frac{7 \text{ procedures}}{8 \text{ procedures}} = 87.50\%$$

**Performance Rate=**

$$\frac{\text{Performance Met (a=4 procedures)}}{\text{Reporting Numerator (7 procedures)}} = \frac{4 \text{ procedures}}{7 \text{ procedures}} = 57.14\%$$