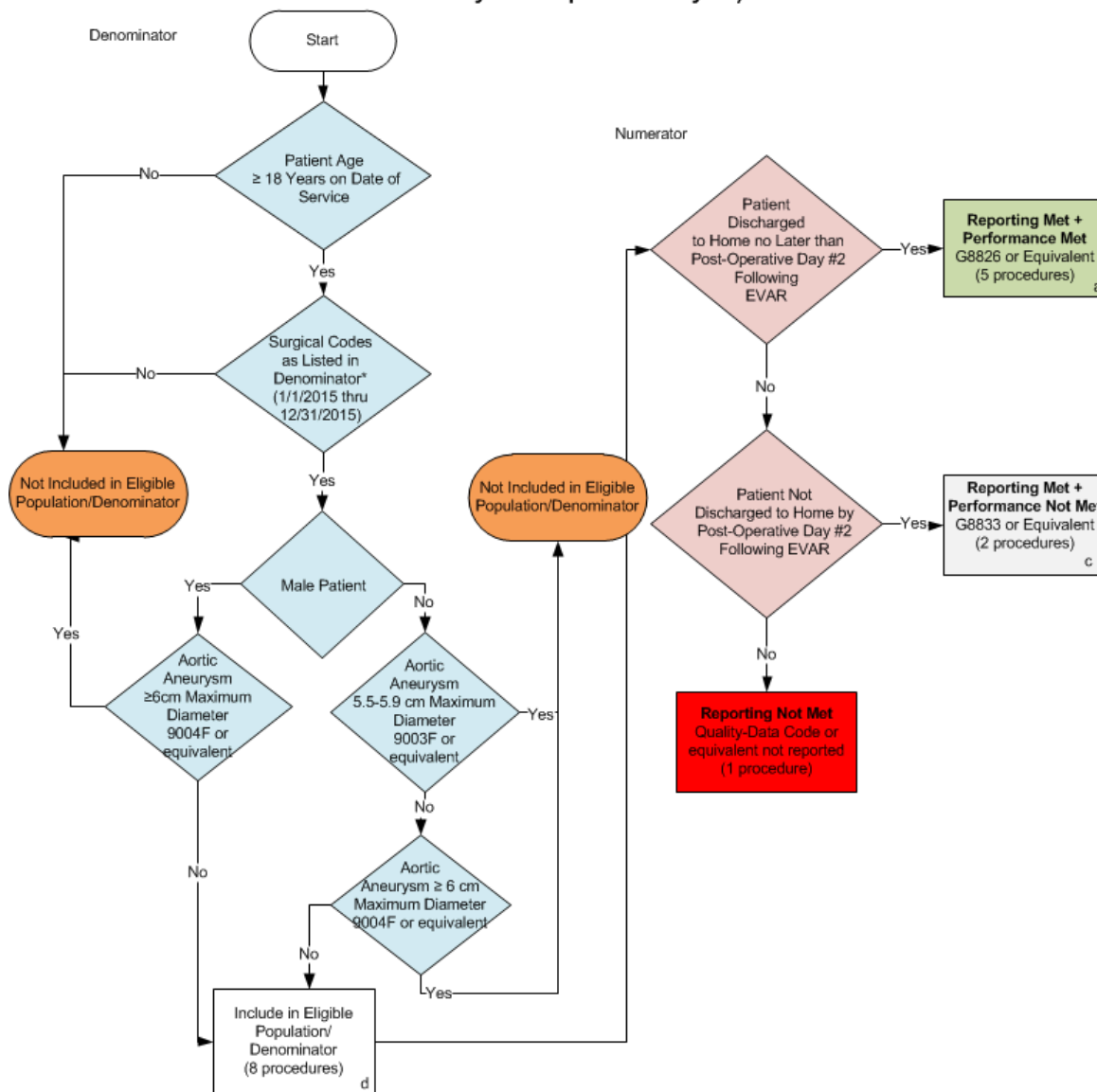


2015 Registry Individual Measure Flow
PQRS #259: Rate of Elective Endovascular Aortic Repair (EVAR) of Small or Moderate Non-Ruptured Abdominal Aortic Aneurysms (AAA) without Major Complications (Discharged to Home by Post-Operative Day #2)



Reporting Rate=		SAMPLE CALCULATIONS:	
Performance Met (a=5 procedures) + Performance Not Met (c=2 procedures) =		7 procedures =	87.50%
Eligible Population / Denominator (d=8 procedures)		8 procedures	
Performance Rate=			
Performance Met (a =5 procedures)		5 procedures =	71.43%
Reporting Numerator (7 procedures)		7 procedures	

*See the posted Measure Specification for specific coding and instructions to report this measure.
 NOTE: Reporting Frequency: Procedure

CPT only copyright 2014 American Medical Association. All rights reserved.

2015 Registry Individual Measure Flow
PQRS #259: Rate of Elective Endovascular Aortic Repair (EVAR) of Small or Moderate Non-Ruptured Abdominal Aortic Aneurysms (AAA) without Major Complications (Discharged to Home by Post-Operative Day #2)

Please refer to the specific section of the Measure Specification to identify the denominator and numerator information for use in reporting this Individual Measure.

1. Start with Denominator
2. Check Patient Age:
 - a. If the Age greater than or equal to 18 years of age on date of service equals No during the measurement period, do not include in Eligible Patient Population. Stop Processing.
 - b. If the Age greater than or equal to 18 years of age on date of service equals Yes during the measurement period, proceed to check Surgical Codes.
3. Check Encounter Performed:
 - a. If Surgical Codes as listed in the denominator equals No, do not include in Eligible Patient Population. Stop Processing.
 - b. If Surgical Codes as listed in the denominator equals Yes, proceed to check Male Patient.
4. Check Gender Male Patient:
 - a. If Male Patient equals No, proceed to check Aortic Aneurysm 5.5 through 5.9 cm Maximum Diameter.
 - b. If Male Patient equals Yes, proceed to check Aortic Aneurysm greater than or equal to 6.0 cm Maximum Diameter.
5. Check Aortic Aneurysm 5.5 through 5.9 cm Maximum Diameter:
 - a. If Aortic Aneurysm 5.5 through 5.9 cm Maximum Diameter equals No, proceed to check Aortic Aneurysm greater than or equal to 6.0 cm Maximum Diameter.
 - b. If Aortic Aneurysm 5.5 through 5.9 cm Maximum Diameter equals Yes, do not include in Eligible Patient Population. Stop Processing.
6. Check Aortic Aneurysm greater than or equal to 6.0 cm Maximum Diameter:
 - a. If Aortic Aneurysm greater than or equal to 6.0 cm Maximum Diameter equals No, include in Eligible Population.
 - b. If Aortic Aneurysm greater than or equal to 6.0 cm Maximum Diameter equals Yes, do not include in Eligible Patient Population. Stop Processing.
7. Denominator Population
 - a. Denominator population is all Eligible Patients in the denominator. Denominator is represented as Denominator in the Sample Calculation listed at the end of this document. Letter d equals 8 procedures in the sample calculation.
8. Start Numerator
9. Check Patient Discharged to Home no Later than Post-Operative Day number 2 following EVAR
 - a. If Patient Discharged to Home no later than Post-Operative Day # 2 Following EVAR equals Yes, include in Reporting Met and Performance Met.

- b. Reporting Met and Performance Met letter is represented in the Reporting Rate and Performance Rate in the Sample Calculation listed at the end of this document. Letter a equals 5 procedures in Sample Calculation.
 - c. If Patient Discharged to Home no Later than Post-Operative Day number #2 Following EVAR equals No, proceed to Patient Not Discharged to Home by Post-Operative Day #2 Following EVAR.
10. Check Patient Not Discharged to Home by Post-Operative Day # 2 Following EVAR:
 - a. If Patient Not Discharged to Home by Post-Operative Day #2 Following EVAR equals Yes, include in the Reporting Met and Performance Not Met.
 - b. Reporting Met and Performance Not Met letter is represented in the Reporting Rate in the Sample Calculation listed at the end of this document. Letter c equals 2 procedures in the Sample Calculation.
 - c. If Patient Not Discharged to Home by Post-Operative Day #2 Following EVAR equals No, proceed to Reporting Not Met.
11. Check Reporting Not Met
 - a. If Reporting Not Met equals No, Quality Data Code or equivalent not reported. 1 patient has been subtracted from reporting numerator in the sample calculation

SAMPLE CALCULATIONS:

Reporting Rate=

$$\frac{\text{Performance Met (a=5 procedures)} + \text{Performance Not Met (c=2 procedures)}}{\text{Eligible Population / Denominator (d=8 procedures)}} = \frac{7 \text{ procedures}}{8 \text{ procedures}} = 87.50\%$$

Performance Rate=

$$\frac{\text{Performance Met (a =5 procedures)}}{\text{Reporting Numerator (7 procedures)}} = \frac{5 \text{ procedures}}{7 \text{ procedures}} = 71.43\%$$