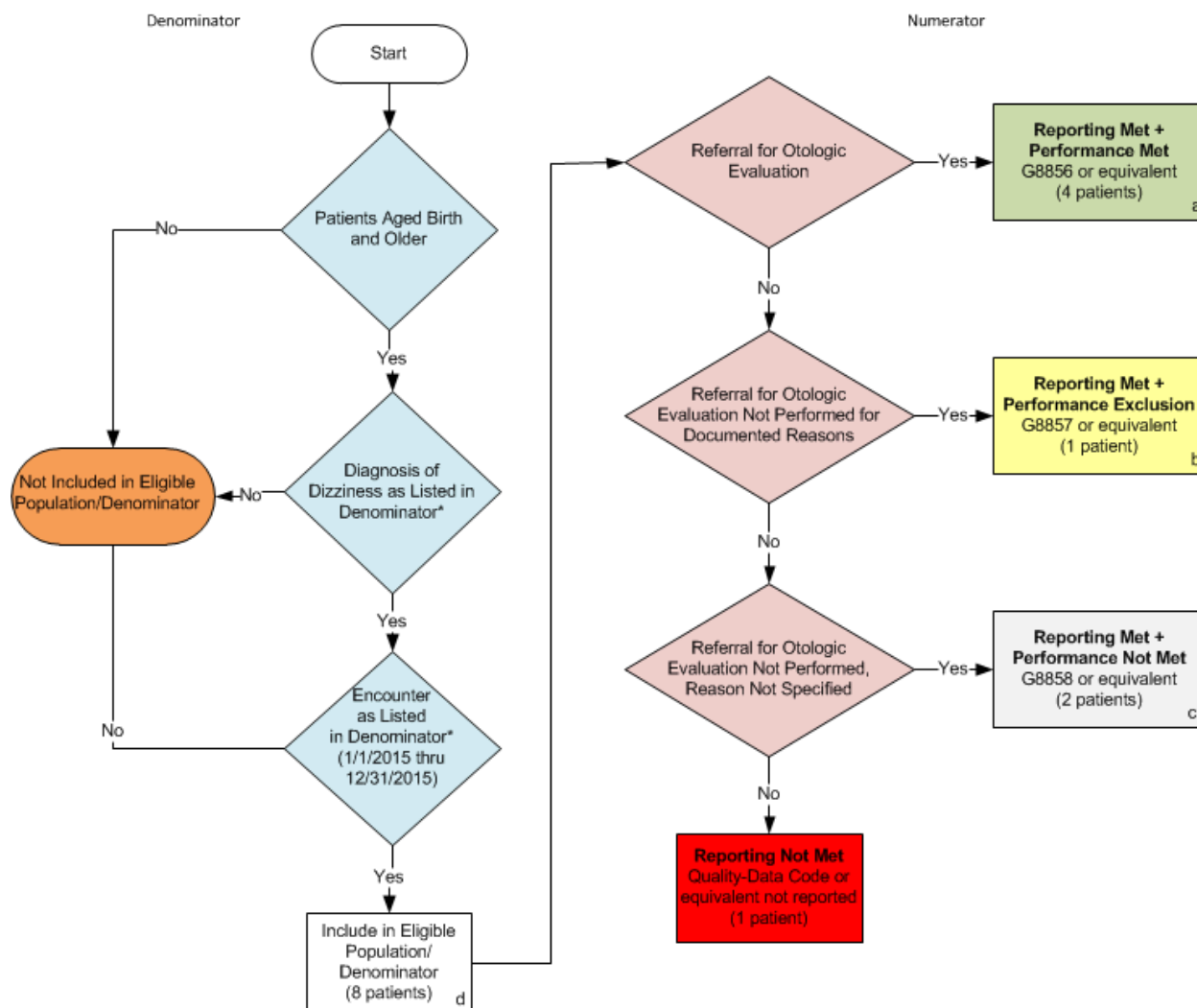


2015 Claims/Registry Individual Measure Flow
PQRS #261: Referral for Otologic Evaluation for Patients with Acute or Chronic Dizziness



SAMPLE CALCULATIONS:

Reporting Rate=

$$\frac{\text{Performance Met (a=4 patients)} + \text{Performance Exclusion (b=1 patient)} + \text{Performance Not Met (c=2 patients)}}{\text{Eligible Population / Denominator (d=8 patients)}} = \frac{7 \text{ patients}}{8 \text{ patients}} = 87.50\%$$

Performance Rate=

$$\frac{\text{Performance Met (a=4 patients)}}{\text{Reporting Numerator (7 patients) - Performance Exclusion (b=1 patient)}} = \frac{4 \text{ patients}}{6 \text{ patients}} = 66.67\%$$

*See the posted Measure Specification for specific coding and instructions to report this measure.
 NOTE: Reporting Frequency: Patient-intermediate

2015 Claims/Registry Individual Measure Flow
PQRS #261 Referral for Otologic Evaluation for Patients with Acute or Chronic Dizziness

Please refer to the specific section of the Measure Specification to identify the denominator and numerator information for use in reporting this Individual Measure.

1. Start with Denominator
2. Check Patient Age:
 - a. If the Age is birth and older years old on Date of Service and equals No during the measurement period, do not include in Eligible Patient Population. Stop Processing.
 - b. If the Age is birth and older years old on Date of Service and equals Yes during the measurement period, proceed to check Patient Diagnosis.
3. Check Patient Diagnosis:
 - a. If Diagnosis of Dizziness as Listed in the Denominator equals No, do not include in Eligible Patient Population. Stop Processing.
 - b. If Diagnosis of Dizziness as Listed in the Denominator equals Yes, proceed to check Encounter Performed.
4. Check Encounter Performed:
 - a. If Encounter as Listed in the Denominator equals No, do not include in Eligible Patient Population. Stop Processing.
 - b. If Encounter as Listed in the Denominator equals Yes, include in the Eligible population.
5. Denominator Population:
 - a. Denominator population is all Eligible Patients in the denominator. Denominator is represented as Denominator in the Sample Calculation listed at the end of this document. Letter d equals 8 patients in the sample calculation.
6. Start Numerator
7. Check Referral for Otologic Evaluation:
 - a. If Referral for Otologic Evaluation equals Yes, include in Reporting Met and Performance Met.
 - b. Reporting Met and Performance Met letter is represented in the Reporting Rate and Performance Rate in the Sample Calculation listed at the end of this document. Letter a equals 4 patients in Sample Calculation.
 - c. If Referral for Otologic Evaluation equals No, proceed to Referral for Otologic Evaluation Not Performed for Documented Reasons.
8. Check Referral for Otologic Evaluation Not Performed for Documented Reasons:
 - a. If Referral for Otologic Evaluation Not Performed for Documented Reasons equals Yes, include in Reporting Met and Performance Exclusion.
 - b. Reporting Met and Performance Exclusion letter is represented in the Reporting Rate and Performance Rate in the Sample Calculation listed at the end of this document. Letter b equals 1 patient in the Sample Calculation.

- c. If Referral for Otologic Evaluation Not Performed for Documented Reasons equals No, proceed to Referral for Otologic Evaluation Not Performed, Reason Not Specified.
9. Check Referral for Otologic Evaluation Not Performed, Reason Not Specified:
 - a. If Referral for Otologic Evaluation Not Performed, Reason Not Specified equals Yes, include in Reporting Met and Performance Not Met.
 - b. Reporting Met and Performance Not Met letter is represented in the Reporting Rate in the Sample Calculation listed at the end of this document. Letter c equals 2 patients in the Sample Calculation.
 - c. If Referral for Otologic Evaluation Not Performed, Reason Not Specified equals No, proceed to Reporting Not Met.
10. Check Reporting Not Met
 - a. If Reporting Not Met equals No, Quality Data Code or equivalent was not reported. 1 patient has been subtracted from reporting numerator in the sample calculation.

SAMPLE CALCULATIONS:

Reporting Rate=

$$\frac{\text{Performance Met (a=4 patients)} + \text{Performance Exclusion (b=1 patient)} + \text{Performance Not Met (c=2 patients)}}{\text{Eligible Population / Denominator (d=8 patients)}} = \frac{7 \text{ patients}}{8 \text{ patients}} = 87.50\%$$

Performance Rate=

$$\frac{\text{Performance Met (a=4 patients)}}{\text{Reporting Numerator (7 patients) – Performance Exclusion (b=1 patient)}} = \frac{4 \text{ patients}}{6 \text{ patients}} = 66.67\%$$