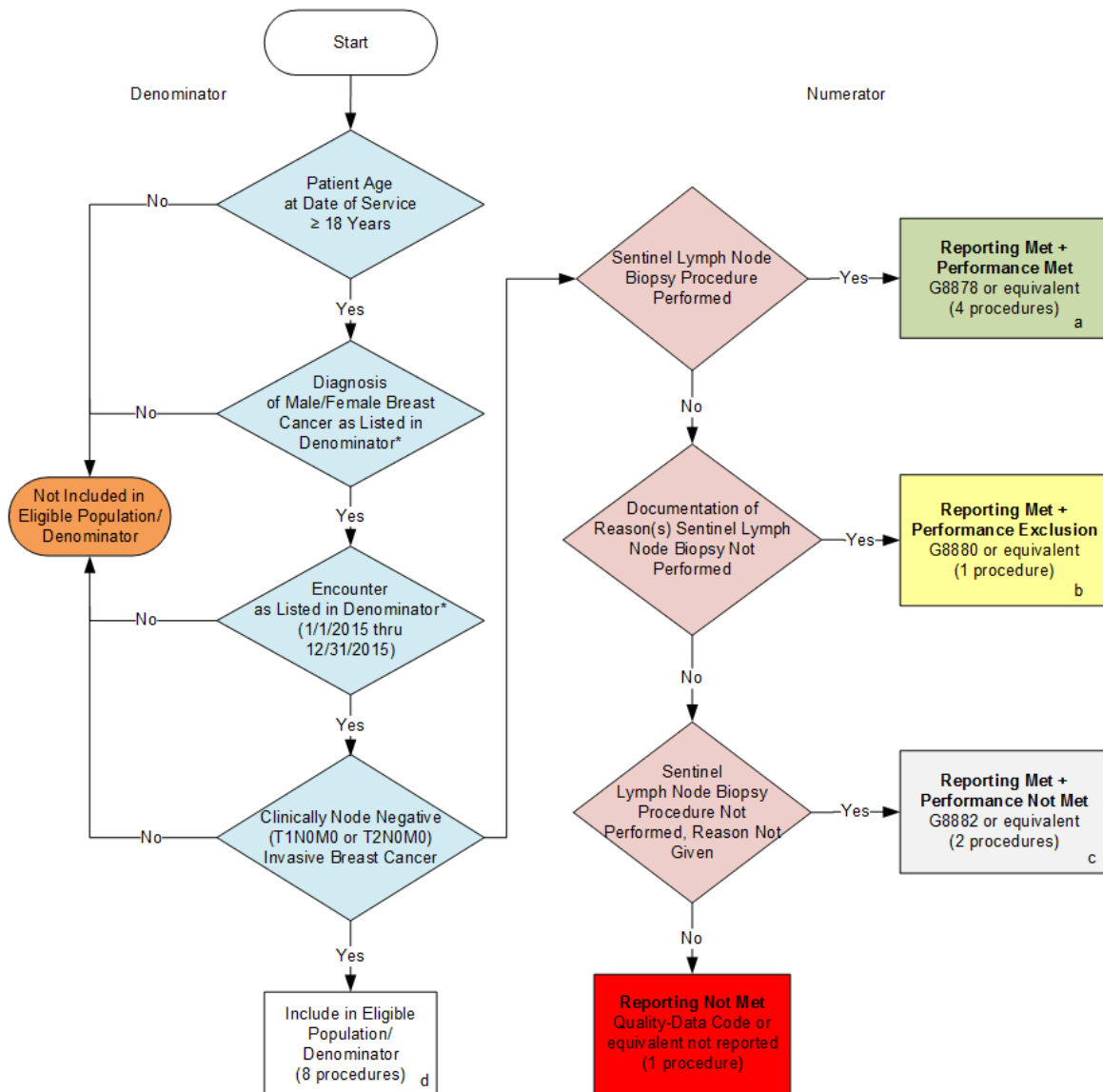


**2015 Registry Individual Measure Flow  
PQRS #264: Sentinel Lymph Node Biopsy for Invasive Breast Cancer**



**SAMPLE CALCULATIONS:**

**Reporting Rate=**  

$$\frac{\text{Performance Met (a=4 procedures)} + \text{Performance Exclusion (1 procedure)} + \text{Performance Not Met (c=2 -procedures)}}{\text{Eligible Population / Denominator (d=8 procedures)}} = \frac{7 \text{ procedures}}{8 \text{ procedures}} = 87.50\%$$

**Performance Rate=**  

$$\frac{\text{Performance Met (a=4 procedures)}}{\text{Reporting Numerator (7 procedures) – Performance Exclusion (1 procedure)}} = \frac{4 \text{ procedures}}{6 \text{ procedures}} = 66.67\%$$

\*See the posted Measure Specification for specific coding and instructions to report this measure.  
 NOTE: Report Frequency- Procedure

v1

**2015 Registry Individual Measure Flow**  
**PQRS #264: Sentinel Lymph Node Biopsy for Invasive Breast Cancer**

Please refer to the specific section of the Measure Specification to identify the denominator and numerator information for use in reporting this Individual Measure.

1. Start with Denominator
2. Check Patient Age:
  - a. If the Age is greater than or equal to 18 years of age on Date of Service and equals No during the measurement period, do not include in Eligible Patient Population. Stop Processing.
  - b. If the Age is greater than or equal to 18 years of age on Date of Service and equals Yes during the measurement period, proceed to check Patient Diagnosis.
3. Check Patient Diagnosis:
  - a. If Diagnosis of Male/Female Breast Cancer as Listed in Denominator equals No, do not include in Eligible Patient Population. Stop Processing.
  - b. If Diagnosis of Male/Female Breast Cancer as Listed in Denominator equals Yes, proceed to check Encounter Performed.
4. Check Encounter Performed:
  - a. If Encounter as Listed in the Denominator equals No, do not include in Eligible Patient Population. Stop Processing.
  - b. If Encounter as Listed in the Denominator equals Yes, include in the Eligible population.
5. Check Clinically node negative (T1N0M0 or T2N0M0) invasive breast cancer:
  - a. If Clinically Node Negative (T1N0M0 or T2N0M0) Invasive Breast Cancer equals No, do not include in Eligible patient population. Stop processing
  - b. If Clinically Node Negative (T1N0M0 or T2N0M0) Invasive Breast Cancer equals Yes, include in Eligible patient population.
6. Denominator Population:
  - a. Denominator population is all Eligible Patients in the denominator. Denominator is represented as Denominator in the Sample Calculation listed at the end of this document. Letter d equals 8 procedures in the sample calculation.
7. Start Numerator
8. Check Sentinel Lymph Node Biopsy Procedure Performed:
  - a. If Sentinel Lymph Node Biopsy Procedure Performed equals Yes, include in Reporting Met and Performance Met.
  - b. Reporting Met and Performance Met letter is represented in the Reporting Rate and Performance Rate in the Sample Calculation listed at the end of this document. Letter a equals 4 procedures in Sample Calculation.
  - c. If Sentinel Lymph Node Biopsy Procedure Performed equals No, proceed to Documentation of Reason(s) Sentinel Lymph Node Biopsy Procedure Not Performed.

9. Check Documentation of Reason(s) Sentinel Lymph Node Biopsy Procedure Not Performed:
  - a. If Documentation of Reason(s) Sentinel Lymph Node Biopsy Procedure Not Performed equals Yes, include in Reporting Met and Performance Exclusion.
  - b. Reporting Met and Performance Exclusion letter is represented in the Reporting Rate and Performance Rate in the Sample Calculation listed at the end of this document. Letter b equals 1 procedure in the Sample Calculation.
  - c. If Documentation of Reason(s) Sentinel Lymph Node Biopsy Procedure Not Performed equals No, proceed to Sentinel Lymph Node Biopsy Procedure Not Performed, Reason Not Given.
10. Check Sentinel Lymph Node Biopsy Procedure Not Performed, Reason Not Given:
  - a. If Sentinel Lymph Node Biopsy Procedure Not Performed, Reason Not Given equals Yes, include in the reporting met and performance not met.
  - b. Reporting Met and Performance Not Met letter is represented in the Reporting Rate in the Sample Calculation listed at the end of this document. Letter c equals 2 procedures in the Sample Calculation.
  - c. If Sentinel Lymph Node Biopsy Procedure Not Performed, Reason Not Given equals No, proceed to Reporting Not Met
11. Check Reporting Not Met
  - a. If Reporting Not Met equals No, Quality Data Code or equivalent not reported. 1 procedure has been subtracted from reporting numerator in the sample calculation.

**SAMPLE CALCULATIONS:**

**Reporting Rate=**

$$\frac{\text{Performance Met (a=4 procedures)} + \text{Performance Exclusion (1 procedure)} + \text{Performance Not Met (c=2 -procedures)}}{\text{Eligible Population / Denominator (d=8 procedures)}} = \frac{7 \text{ procedures}}{8 \text{ procedures}} = 87.50\%$$

**Performance Rate=**

$$\frac{\text{Performance Met (a=4 procedures)}}{\text{Reporting Numerator (7 procedures) – Performance Exclusion (1 procedure)}} = \frac{4 \text{ procedures}}{6 \text{ procedures}} = 66.67\%$$