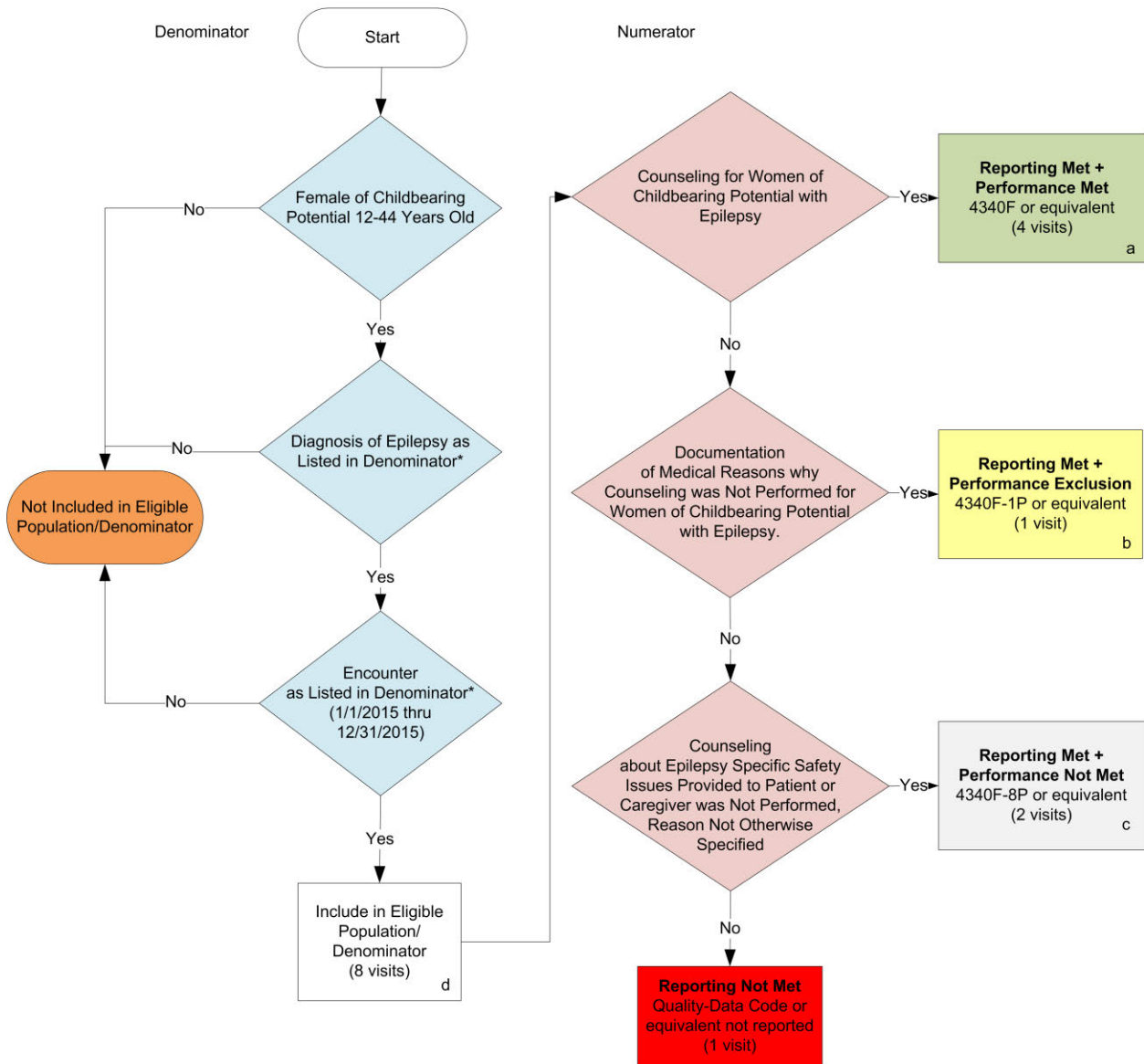


**2015 Claims/Registry Individual Measure Flow**  
**PQRS #268: Epilepsy: Counseling for Women of Childbearing Potential with Epilepsy**



**SAMPLE CALCULATIONS:**

**Reporting Rate=**

Performance Met (a=4 visits) + Performance Exclusion (b=1 visit) + Performance Not Met (c=2 visits) = 7 visits = 87.50%  
 Eligible Population / Denominator (d=8 visits) = 8 visits

**Performance Rate=**

Performance Met (a=4 visits) = 4 visits = 66.67%  
 Reporting Numerator (7 visits) – Performance Exclusion (b=1 visit) = 6 visits

\*See the posted Measure Specification for specific coding and instructions to report this measure.  
 NOTE: Report Frequency- Visit

CPT only copyright 2014 American Medical Association. All rights reserved.

v1

**2015 Claims/Registry Individual Measure Flow**  
**PQRS #268: Epilepsy: Counseling for Women of Childbearing Potential with Epilepsy**

Please refer to the specific section of the Measure Specification to identify the denominator and numerator information for use in reporting this Individual Measure.

1. Start with Denominator
2. Check Patient Gender and Age:
  - a. If the Gender and Age is equal to Female of Childbearing Potential 12-44 years of age on Date of Service and equals No during the measurement period, do not include in Eligible Patient Population. Stop Processing.
  - b. If the Gender and Age is equal to Female of Childbearing Potential 12-44 years of age on Date of Service and equals Yes during the measurement period, proceed to check Patient Diagnosis.
3. Check Patient Diagnosis:
  - a. If Diagnosis of Epilepsy as Listed in the Denominator equals No, do not include in Eligible Patient Population. Stop Processing.
  - b. If Diagnosis of Epilepsy as Listed in the Denominator equals Yes, proceed to check Encounter Performed.
4. Check Encounter Performed:
  - a. If Encounter as Listed in the Denominator equals No, do not include in Eligible Patient Population. Stop Processing.
  - b. If Encounter as Listed in the Denominator equals Yes, include in the Eligible Population.
5. Denominator Population:
  - a. Denominator population is all Eligible Patients in the denominator. Denominator is represented as Denominator in the Sample Calculation listed at the end of this document. Letter d equals 8 visits in the sample calculation.
6. Start Numerator
7. Check Counseling for Women of Childbearing Potential with Epilepsy:
  - a. If Counseling for Women of Childbearing Potential with Epilepsy equals Yes, include in Reporting Met and Performance Met.
  - b. Reporting Met and Performance Met letter is represented in the Reporting Rate and Performance Rate in the Sample Calculation listed at the end of this document. Letter a equals 4 visits in Sample Calculation.
  - c. If Counseling for Women of Childbearing Potential with Epilepsy equals No, proceed to Documentation of Medical Reasons why Counseling was Not Performed for Women with Childbearing Potential with Epilepsy.

8. Check Documentation of Medical Reasons why Counseling was Not Performed for Women of Childbearing Potential with Epilepsy:
  - a. If Documentation of Medical Reasons why Counseling was Not Performed for Women of Childbearing Potential with Epilepsy equals Yes, include in Reporting Met and Performance Exclusion.
  - b. Reporting Met and Performance Exclusion letter is represented in the Reporting Rate in the Sample Calculation listed at the end of this document. Letter b equals 1 visit in the Sample Calculation.
  - c. If Documentation of Medical Reasons why Counseling was Not Performed for Women of Childbearing Potential with Epilepsy equals No, proceed to Counseling About Epilepsy Specific Issues Provided to Patient or Caregiver was Not Performed, Reason Not Otherwise Specified.
9. Counseling About Epilepsy Specific Safety Issues Provided to Patient or Caregiver was Not Performed, Reason Not Otherwise Specified:
  - a. If Counseling About Epilepsy Specific Issues Provided to Patient or Caregiver was Not Performed, Reason Not Otherwise Specified equals Yes, include in the Reporting Met and Performance Not Met.
  - b. Reporting Met and Performance Not Met letter is represented in the Reporting Rate in the Sample Calculation listed at the end of this document. Letter c equals 2 visits in the Sample Calculation.
  - c. If Counseling About Epilepsy Specific Issues Provided to Patient or Caregiver was Not Performed, Reason Not Otherwise Specified equals No, proceed to Reporting Not Met.
10. Check Reporting Not Met:
  - a. If Reporting Not Met equals No, Quality Data Code or equivalent not reported. 1 visit has been subtracted from the reporting numerator in the sample calculation.

**SAMPLE CALCULATIONS:**

**Reporting Rate=**

$$\frac{\text{Performance Met (a=4 visits) + Performance Exclusion (b=1 visit) + Performance Not Met (c=2 visits)}}{\text{Eligible Population / Denominator (d=8 visits)}} = \frac{7 \text{ visits}}{8 \text{ visits}} = 87.50\%$$

**Performance Rate=**

$$\frac{\text{Performance Met (a=4 visits)}}{\text{Reporting Numerator (7 visits) - Performance Exclusion (b=1 visit)}} = \frac{4 \text{ visits}}{6 \text{ visits}} = 66.67\%$$