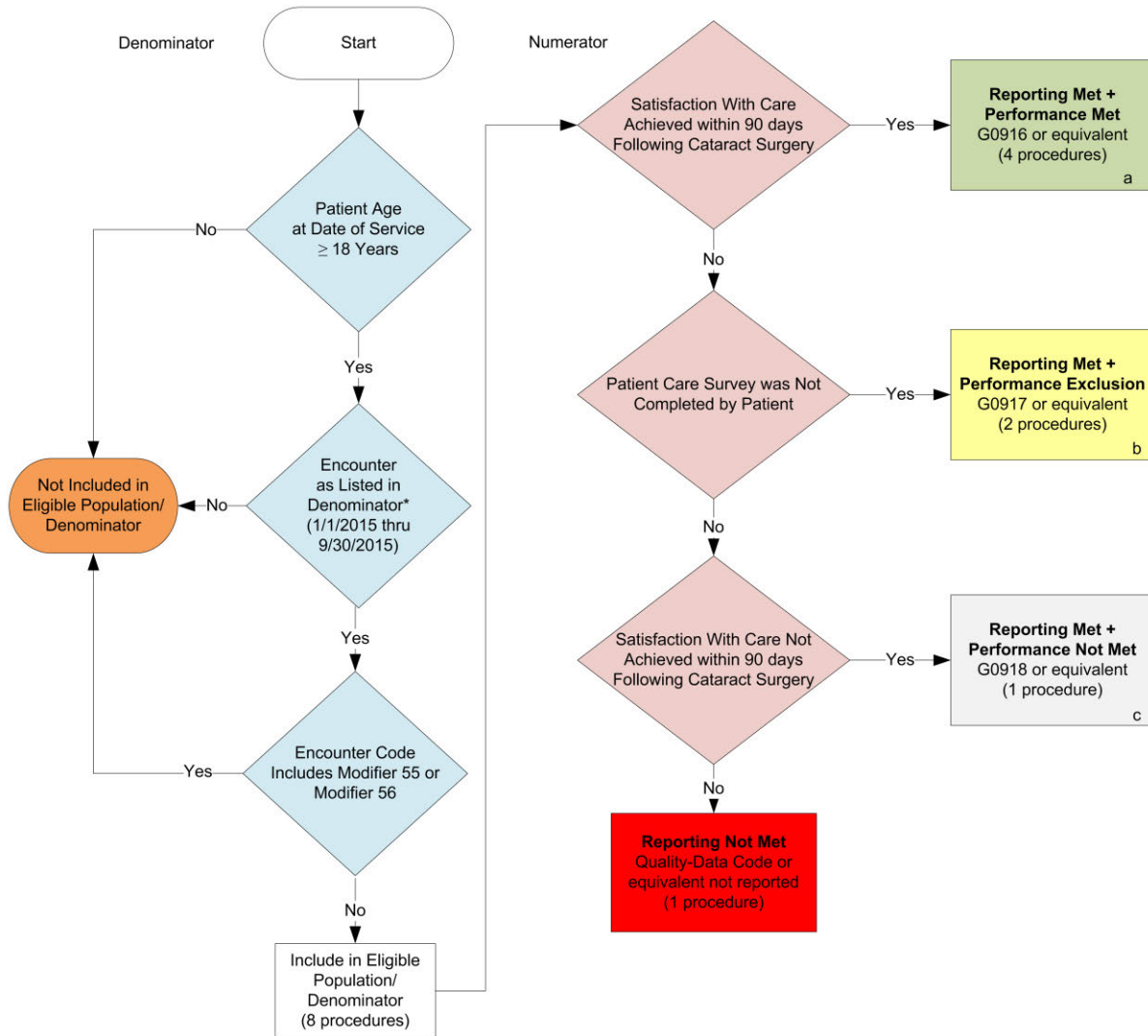


**2015 Registry Individual Measure Flow**  
**PQRS #304: Cataracts: Patient Satisfaction within 90 Days Following Cataract Surgery**



**SAMPLE CALCULATIONS:**

**Reporting Rate=**

$\frac{\text{Performance Met (a=4 procedures)} + \text{Performance Exclusion (b=2 procedures)} + \text{Performance Not Met (c=1 procedure)}}{\text{Eligible Population / Denominator (d=8 procedures)}} = \frac{7 \text{ procedures}}{8 \text{ procedures}} = 87.50\%$

**Performance Rate=**

$\frac{\text{Performance Met (a=4 procedures)}}{\text{Reporting Numerator (7 procedures) – Performance Exclusion (b=2 procedures)}} = \frac{4 \text{ procedures}}{5 \text{ procedures}} = 80.00\%$

\*See the posted Measure Specification for specific coding and instructions to report this measure.

NOTE: Report Frequency- Procedure

v1

**2015 Registry Individual Measure Flow**  
**PQRS #304: Cataracts: Patient Satisfaction within 90 Days Following Cataract Surgery**

Please refer to the specific section of the Measure Specification to identify the denominator and numerator information for use in reporting this Individual Measure.

1. Start with Denominator
2. Check Patient Age:
  - a. If the Age is greater than or equal to 18 years of age on Date of Service and equals No during the measurement period, do not include in Eligible Patient Population. Stop Processing.
  - b. If the Age is greater than or equal to 18 years of age on Date of Service and equals Yes during the measurement period, proceed to check Encounter Performed.
3. Check Encounter Performed:
  - a. If Encounter as Listed in the Denominator equals No, do not include in Eligible Patient Population. Stop Processing.
  - b. If Encounter as Listed in the Denominator equals Yes, proceed to encounter code includes modifier 55 or modifier 56.
4. Check Encounter Code Includes Modifier 55 or Modifier 56:
  - a. If Encounter Code Includes Modifier 55 or Modifier 56 equals Yes, do not include in Eligible Patient Population. Stop Processing.
  - b. If Encounter Code Includes Modifier 55 or Modifier 56 equals No, include in Eligible Population.
5. Denominator Population:
  - a. Denominator population is all Eligible Patients in the denominator. Denominator is represented as Denominator in the Sample Calculation listed at the end of this document. Letter d equals 8 procedures in the sample calculation.
6. Start Numerator
7. Check Satisfaction with Care Achieved within 90 Days Following Cataract Surgery:
  - a. If Satisfaction with Care Achieved within 90 Days Following Cataract Surgery equals Yes, include in Reporting Met and Performance Met.
  - b. Reporting Met and Performance Met letter is represented in the Reporting Rate and Performance Rate in the Sample Calculation listed at the end of this document. Letter a equals 4 procedures in Sample Calculation.
  - c. If Satisfaction with Care Achieved within 90 days Following Cataract Surgery equals No, proceed to Patient Care Survey was Not Completed by Patient.
8. Check Patient Care Survey was Not Completed by Patient:
  - a. If Patient Care Survey was Not Completed by Patient equals Yes, include in Reporting Met and Performance Exclusion.

- b. Reporting Met and Performance Exclusion letter is represented in the Reporting Rate in the Sample Calculation listed at the end of this document. Letter b equals 2 procedures in the Sample Calculation.
  - c. If Patient Care Survey was Not Completed by Patient equals No, proceed to Satisfaction with Care Not Achieved within 90 Days Following Cataract Surgery.
- 9. Check Satisfaction with Care Not Achieved within 90 Days Following Cataract Surgery:
  - a. If Satisfaction with Care Not Achieved within 90 Days Following Cataract Surgery equals Yes, include in the Reporting Met and Performance Not Met.
  - b. Reporting Met and Performance Not Met letter is represented in the Reporting Rate in the Sample Calculation listed at the end of this document. Letter c<sup>2</sup> equals 2 procedures in the Sample Calculation.
  - c. If Satisfaction with Care Not Achieved within 90 Days Following Cataract Surgery equals No, proceed to Reporting Not Met.
- 10. Check Reporting Not Met:
  - a. If Reporting Not Met equals No, Quality Data Code or equivalent not reported. 1 procedure has been subtracted from the reporting numerator in the sample calculation.

**SAMPLE CALCULATIONS:**

**Reporting Rate=**

$$\frac{\text{Performance Met (a=4 procedures)} + \text{Performance Exclusion (b=2 procedures)} + \text{Performance Not Met (c=1 procedure)}}{\text{Eligible Population / Denominator (d=8 procedures)}} = \frac{7 \text{ procedures}}{8 \text{ procedures}} = 87.50\%$$

**Performance Rate=**

$$\frac{\text{Performance Met (a=4 procedures)}}{\text{Reporting Numerator (7 procedures) - Performance Exclusion (b=2 procedures)}} = \frac{4 \text{ procedures}}{5 \text{ procedures}} = 80.00\%$$