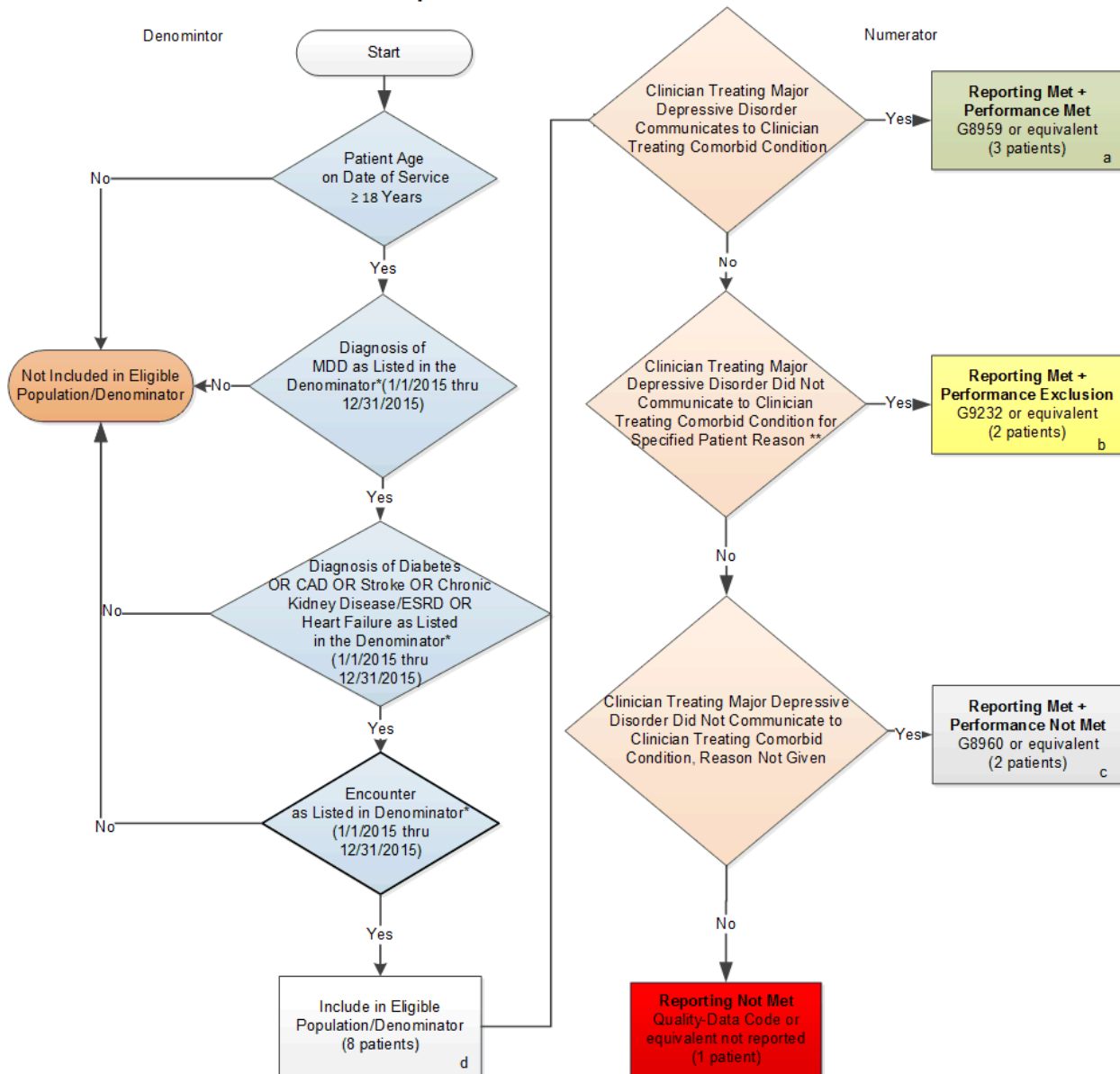


2015 Registry Individual Measure Flow
PQRS #325: Adult Major Depressive Disorder (MDD): Coordination of Care of Patients with Specific Comorbid Conditions



SAMPLE CALCULATIONS:

Reporting Rate=

$$\frac{\text{Performance Met (a=3 patients)} + \text{Performance Exclusion (b=2 patients)} + \text{Performance Not Met (c=2 patients)}}{\text{Eligible Population / Denominator (d=8 patients)}} = \frac{7 \text{ patients}}{8 \text{ patients}} = 87.50\%$$

Performance Rate=

$$\frac{\text{Performance Met (a=3 patients)}}{\text{Reporting Numerator (7 patients) - Performance Exclusion (b=2 patients)}} = \frac{3 \text{ patients}}{5 \text{ patients}} = 60.00\%$$

* See the posted Measure Specification for specific coding and instructions to report this measure.

** See the posted Measure Specification for exclusion criteria for this measure.

NOTE: Report Frequency: Patient-process

2015 Registry Individual Measure Flow
PQRS #325: Adult Major Depressive Disorder (MDD): Coordination of Care of
Patients with Specific Comorbid Conditions

Please refer to the specific section of the Measure Specification to identify the denominator and numerator information for use in reporting this Individual Measure.

1. Start with Denominator
2. Check Patient Age:
 - a. If the Age is greater than or equal to 18 years of age at Date of Service equals No during the measurement period, do not include in Eligible Patient Population. Stop Processing.
 - b. If the Age is greater than or equal to 18 years of age at Date of Service equals Yes during the measurement period, proceed to check Patient Diagnosis.
3. Check Patient Diagnosis:
 - a. If Diagnosis of MDD as Listed in the Denominator equals No, do not include in Eligible Patient Population. Stop Processing.
 - b. If Diagnosis of MDD as Listed in the Denominator equals Yes, proceed to check Diagnosis of Diabetes OR CAD OR Stroke OR Chronic Kidney Disease/ESRD OR Heart Failure.
4. Check Diagnosis of Diabetes OR CAD OR Stroke OR Chronic Kidney Disease/ESRD OR Heart Failure:
 - a. If Diagnosis of Diabetes OR CAD OR Stroke OR Chronic Kidney Disease/ESRD OR Heart Failure as Listed in the Denominator equals No, do not include in Eligible Patient Population. Stop Processing.
 - b. If Diagnosis of Diabetes OR CAD OR Stroke OR Chronic Kidney Disease/ESRD OR Heart Failure as Listed in the Denominator equals Yes, proceed to check Encounter
5. Check Encounter Performed:
 - a. If Encounter as Listed in Denominator equals No, do not include in Eligible Patient Population. Stop Processing.
 - b. If Encounter as Listed in Denominator equals Yes, include in the Eligible population
6. Denominator Population:
 - a. Denominator population is all Eligible Patients in the denominator. Denominator is represented as Denominator in the Sample Calculation listed at the end of this document. Letter d equals 8 patients in the sample calculation.
7. Start Numerator
8. Check Clinician Treating Major Depressive Disorder Communicates to Clinician Treating Comorbid Condition:
 - a. If Clinician Treating Major Depressive Disorder Communicates to Clinician Treating Comorbid Condition equals Yes, include in Reporting Met and Performance Met.

- b. Reporting Met and Performance Met letter is represented in the Reporting Rate and Performance Rate in the Sample Calculation listed at the end of this document. Letter a equals 3 patients in Sample Calculation.
 - c. If Clinician Treating Major Depressive Disorder Communicates to Clinician Treating Comorbid Condition equals No, proceed to Clinician Treating Major Depressive Disorder Did Not Communicate to Clinician Treating Comorbid Condition for Specified Patient Reason.
9. Check Clinician Treating Major Depressive Disorder Did Not Communicate to Clinician Treating Comorbid Condition for Specified Patient Reason:
 - a. If Clinician Treating Major Depressive Disorder Did Not Communicate to Clinician Treating Comorbid Condition for Specified Patient Reason equals Yes, include in the Reporting Met and Performance Exclusion.
 - b. Reporting Met and Performance Exclusion letter is represented in the Reporting Rate and Performance Rate in the Sample Calculation listed at the end of this document. Letter b equals 2 patients in the Sample Calculation.
 - c. If Clinician Treating Major Depressive Disorder Did Not Communicate to Clinician Treating Comorbid Condition for Specified Patient Reason equals No, proceed to Clinician Treating Major Depressive Disorder Did Not Communicate to Clinician Treating Comorbid Condition, Reason Not Given.
10. Check Clinician Treating Major Depressive Disorder Did Not Communicate to Clinician Treating Comorbid Condition, Reason Not Given:
 - a. If Clinician Treating Major Depressive Disorder Did Not Communicate to Clinician Treating Comorbid Condition, Reason Not Given equals Yes, include in the Reporting Met and Performance Not Met.
 - b. Reporting Met and Performance Not Met letter is represented in the Reporting Rate in the Sample Calculation listed at the end of this document. Letter c equals 2 patients in the Sample Calculation.
 - c. If Clinician Treating Major Depressive Disorder Did Not Communicate to Clinician Treating Comorbid Condition, Reason Not Given equals No, proceed to Reporting Not Met.
11. Check Reporting Not Met:
 - a. If Reporting Not Met equals No, the Quality Data Code or equivalent was not reported. 1 patient has been subtracted from the reporting numerator in the sample calculation.

SAMPLE CALCULATIONS:

Reporting Rate=

$$\frac{\text{Performance Met (a=3 patients)} + \text{Performance Exclusion (b=2 patients)} + \text{Performance Not Met (c=2 patients)}}{\text{Eligible Population / Denominator (d=8 patients)}} = \frac{7 \text{ patients}}{8 \text{ patients}} = 87.50\%$$

Performance Rate=

$$\frac{\text{Performance Met (a=3 patients)}}{\text{Reporting Numerator (7 patients) - Performance Exclusion (b=2 patients)}} = \frac{3 \text{ patients}}{5 \text{ patients}} = 60.00\%$$